

GROUP 52A

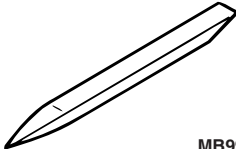
INTERIOR

CONTENTS

SPECIAL TOOL	52A-2	INSIDE REARVIEW MIRROR	52A-20
INSTRUMENT PANEL ASSEMBLY .	52A-2	FRONT SEAT ASSEMBLY	52A-21
REMOVAL AND INSTALLATION	52A-2	REMOVAL AND INSTALLATION	52A-21
DISASSEMBLY AND REASSEMBLY	52A-8	INSPECTION	52A-22
FLOOR CONSOLE ASSEMBLY	52A-9	DISASSEMBLY AND REASSEMBLY	52A-24
REMOVAL AND INSTALLATION	52A-9	SECOND SEAT ASSEMBLY	52A-26
INTERIOR TRIM	52A-10	REMOVAL AND INSTALLATION	52A-26
REMOVAL AND INSTALLATION	52A-10	DISASSEMBLY AND REASSEMBLY	52A-27
DOOR TRIM	52A-12	THIRD SEAT ASSEMBLY	52A-33
REMOVAL AND INSTALLATION	52A-12	REMOVAL AND INSTALLATION	52A-33
DISASSEMBLY AND REASSEMBLY	52A-14	DISASSEMBLY AND REASSEMBLY	52A-34
TAILGATE TRIM	52A-16	FRONT SEAT BELT	52A-35
REMOVAL AND INSTALLATION	52A-16	REMOVAL AND INSTALLATION	52A-35
HEADLINING	52A-17	INSPECTION	52A-36
REMOVAL AND INSTALLATION	52A-17	REAR SEAT BELT	52A-37
DISASSEMBLY AND REASSEMBLY	52A-19	REMOVAL AND INSTALLATION	52A-37

SPECIAL TOOL

M1521000600286

Tool	Tool number	Name	Use
 MB990784	MB990784	Ornament remover	Removal of switch, trim, etc.

INSTRUMENT PANEL ASSEMBLY

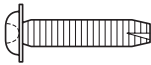
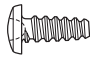
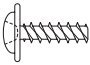

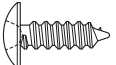
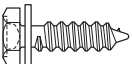
REMOVAL AND INSTALLATION

M1521001700413

⚠ WARNING



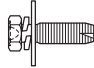
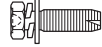
For removal and installation of the passenger's side air bag module, always observe the service procedures described in GROUP 52B, Driver's, Front Passenger's Air Bag Module(s) and Clock Spring P.52B-225.

The following bolts and screws are used for installing the instrument panel. Bolts and screws are indicated as marks shown in the illustration in the sections of "Removal and Installation" and "Disassembly and Assembly."

Name	Symbol	Size (D × L) mm	Colour	Shape
Machine flange screw	a	4 × 12	Black	 AC302569
Tapping screw	b	4 × 10	-	 AC304084
	c	5 × 12	-	 AC104436
	d	5 × 20	-	
	e	5 × 10	-	 AC302519
	f	5 × 12	Black	 AC104450
	g	5 × 16	-	
Tapping screw (hexagon)	h	5 × 16	-	 AC104425

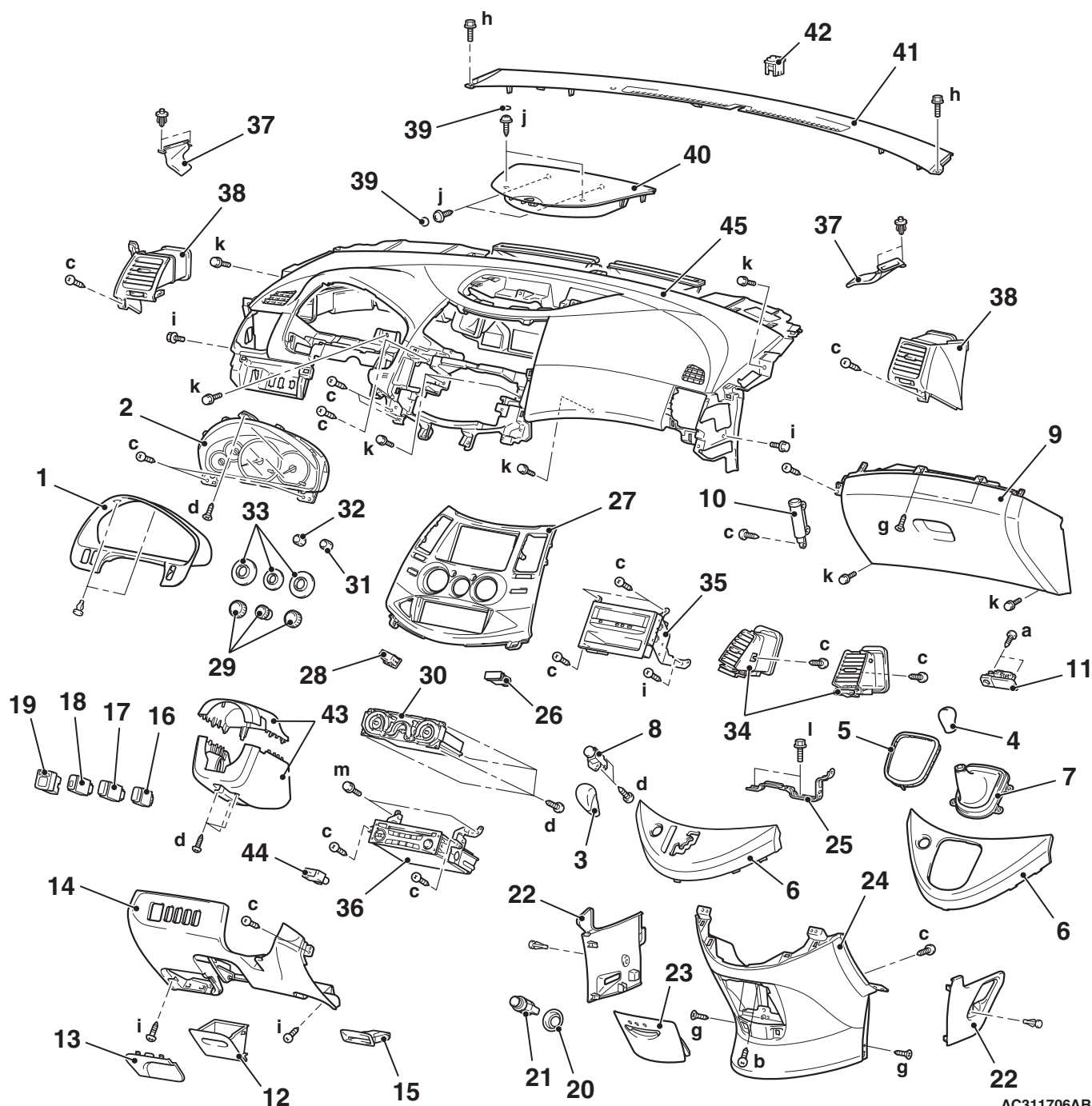
**INTERIOR
INSTRUMENT PANEL ASSEMBLY**

52A-3

Name	Symbol	Size (D × L) mm	Colour	Shape
Washer assembled screw	i	5 × 16	-	 AC104420
	j	5 × 16	Black	 AC304085
Washer assembled bolt	k	6 × 16	-	 AC104430
	l	6 × 16	-	 AC104429

CAUTION

- Refer to GROUP 52B-SRS Service Precautions [P.52B-7](#) and Driver's, Front Passenger's Air bag Module(s) and Clock Spring [P.52B-225](#) before removing the passenger side air bag module.
- Do not subject the SRS-ECU to any shocks when removing or installing the instrument panel.



AC311706AB

Removal steps

<<A>>

<>

1. Combination meter bezel
2. Combination meter assembly
3. Selector lever knob (A/T)
4. Gear shift lever knob (M/T)
5. Bezel <M/T>
6. Selector lever panel
7. Shift boot <M/T>
8. Hazard warning lamp switch

<<C>>

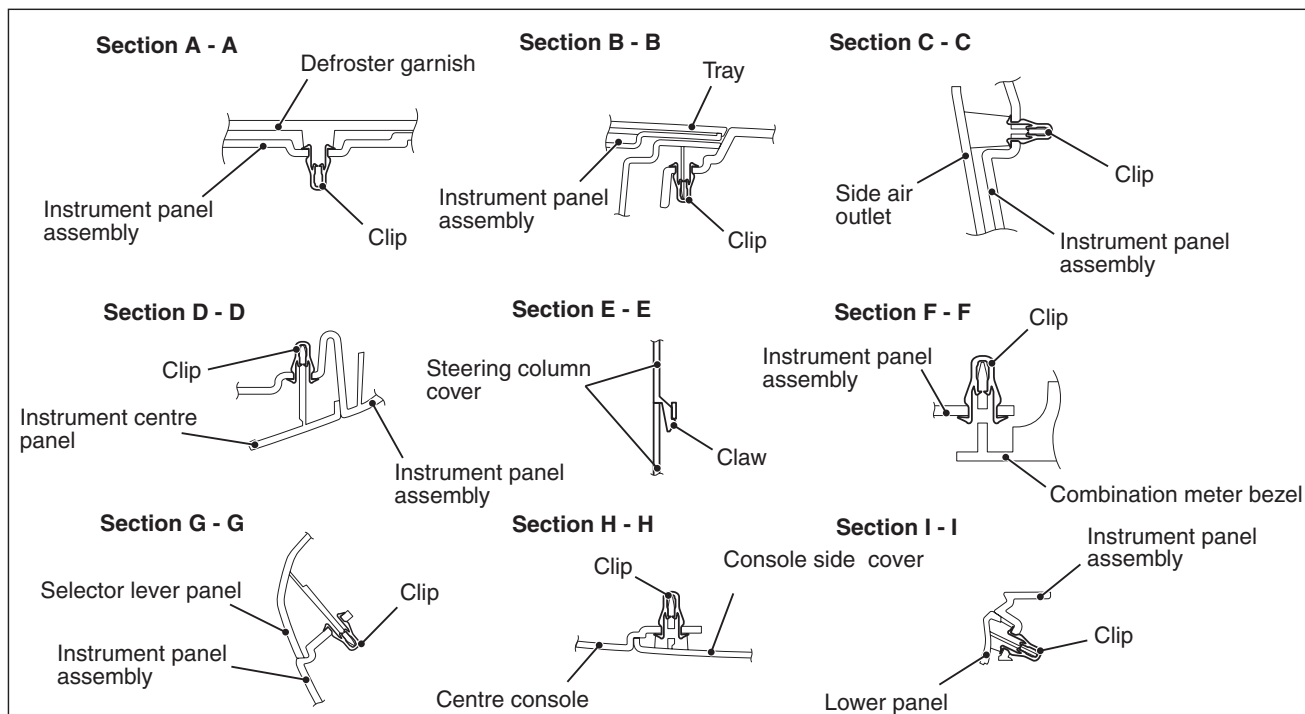
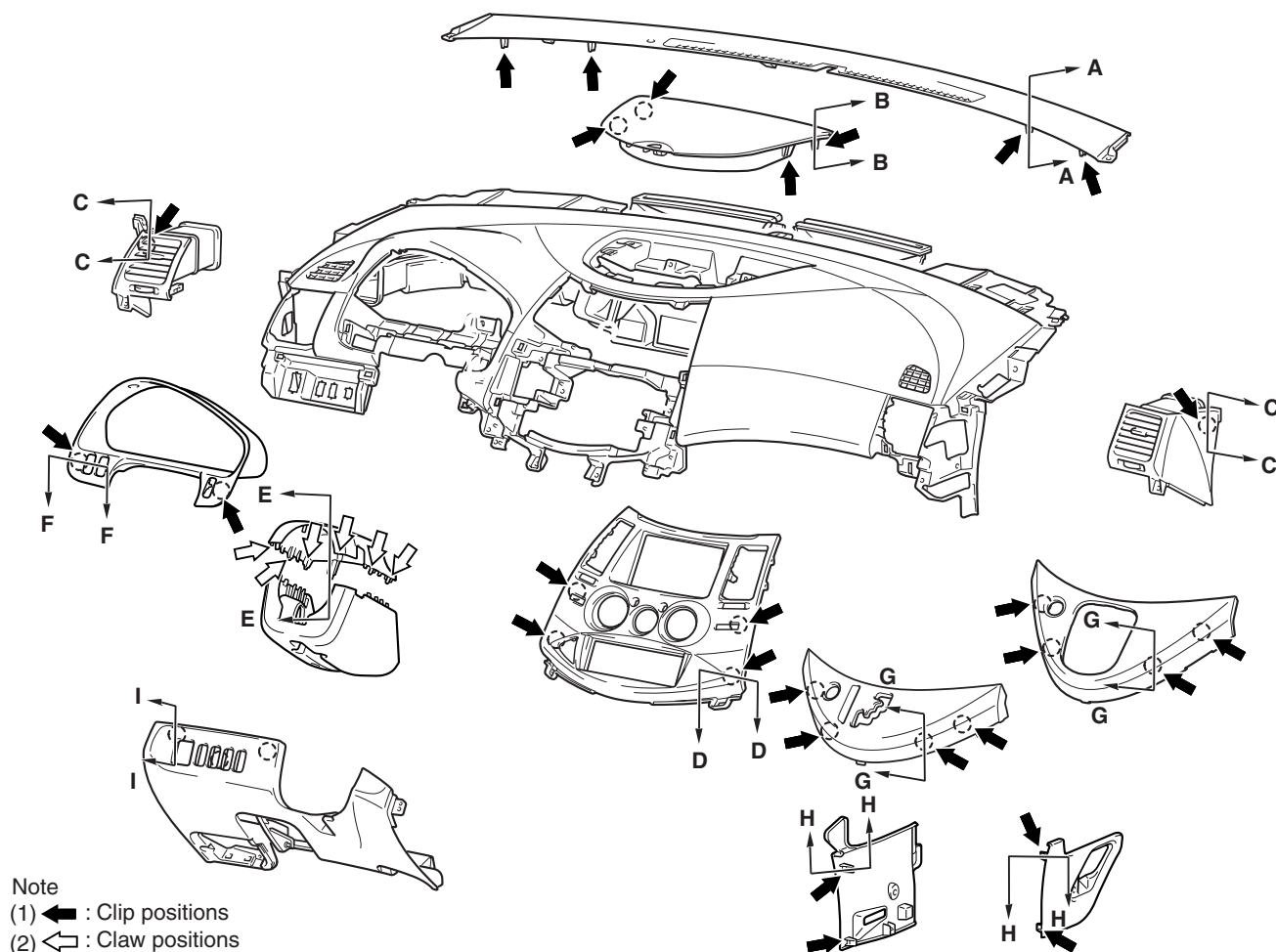
Removal steps (Continued)

- Cowl side trim (LH) (Refer to [P.52A-10](#)).
- 9. Glove box assembly
- 10. Glove box damper
- 11. Glove box lock
- Fuel filler lid lock release handle (Refer to GROUP 42, Fuel Filler Lid [P.42-7](#)).

Removal steps (Continued)

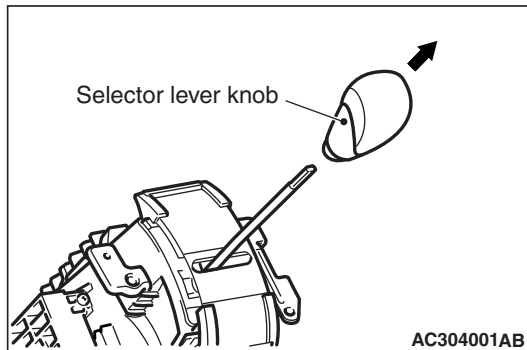
12. Parcel box
13. Fuse box lid <LH drive vehicles>
14. Lower panel
15. Card holder <RH drive vehicles>
16. TCL switch <Vehicles with TCL>
17. Fog lamp switch
18. Head lamp levering switch
19. Remote controlled mirror switch
20. Cigar lighter protector <RH drive vehicles>
21. Cigar lighter <RH drive vehicles>
22. Console side cover
23. Ashtray
24. Centre console
25. Console bracket
26. Lamp plug
27. Instrument centre panel
28. Air bag cut off switch indicator
29. Heater control lever knob
30. Heater controller assembly
31. Defogger switch
32. Outside/inside air selection switch knob
33. Panel
34. Air outlet
35. Multivision display assembly
36. Radio assembly
37. Side defroster duct A
38. Side air outlet
39. Screw cap
40. Tray
41. Defroster garnish
42. Photo sensor
43. Steering column cover
 - Clock spring harness connector
- <<D>>
 - Column switch harness connector
- <<D>>
 - Key reminder switch harness connector
- <<D>>
 - Ignition switch harness connector
 - Steering column shaft (Refer to GROUP 37, Steering Shaft [P.37-16](#)).
- <<D>>
 - Air bag module (squib) (passenger's side) harness connector
44. Interior temperature sensor
45. Instrument panel assembly

CLIP AND CLAW POSITIONS



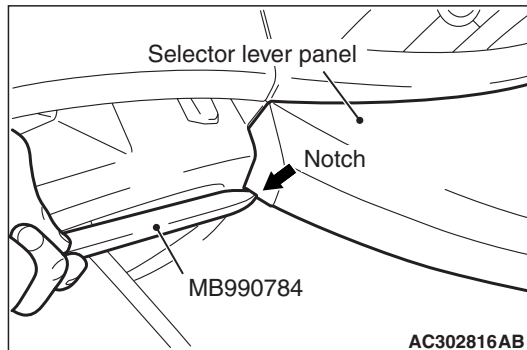
REMOVAL SERVICE POINTS

<<A>> SELECTOR LEVER KNOB REMOVAL



Pull out the selector knob to the direction shown.

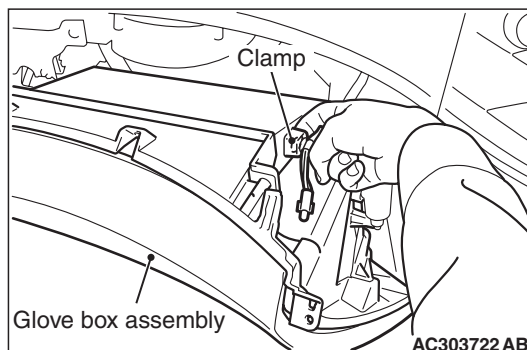
<> SELECTOR LEVER PANEL REMOVAL



Open the glove box door, insert the special tool Ornament Remover (MB990784) into the shown position to remove the selector lever panel.

<<C>> GLOVE BOX ASSEMBLY REMOVAL

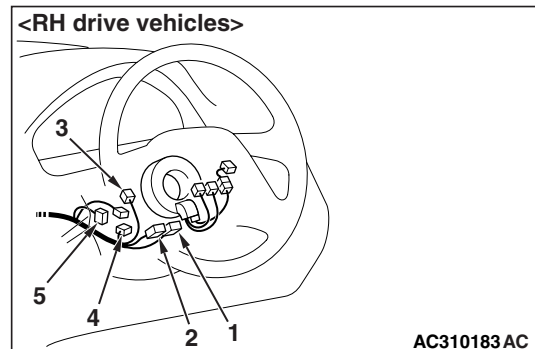
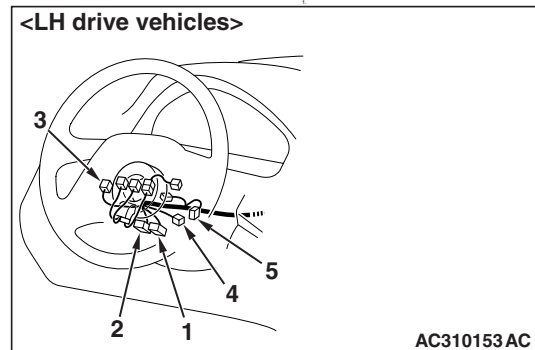
1. Remove the glove box screws and the glove box lamp.



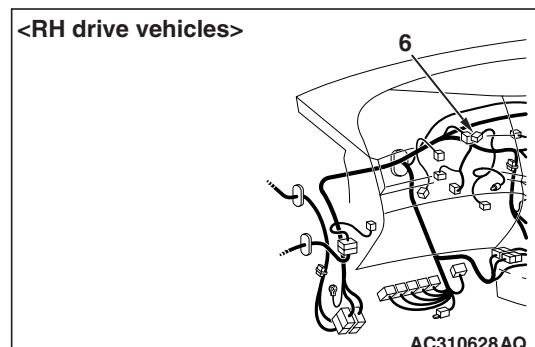
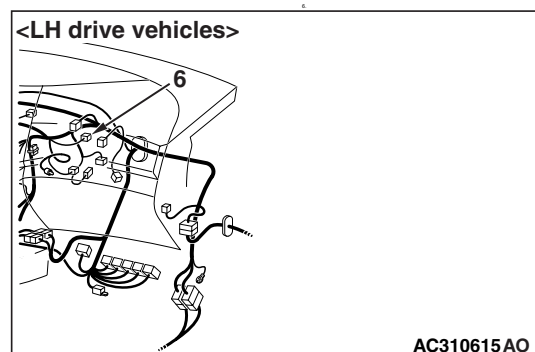
2. Slide the glove box towards you to gain access to the glove box lamp wiring harness clamp. Then release the clamp to remove the glove box assembly.

<<D>> CONNECTOR DISCONNECTION

Disconnect the connectors shown in the illustration.



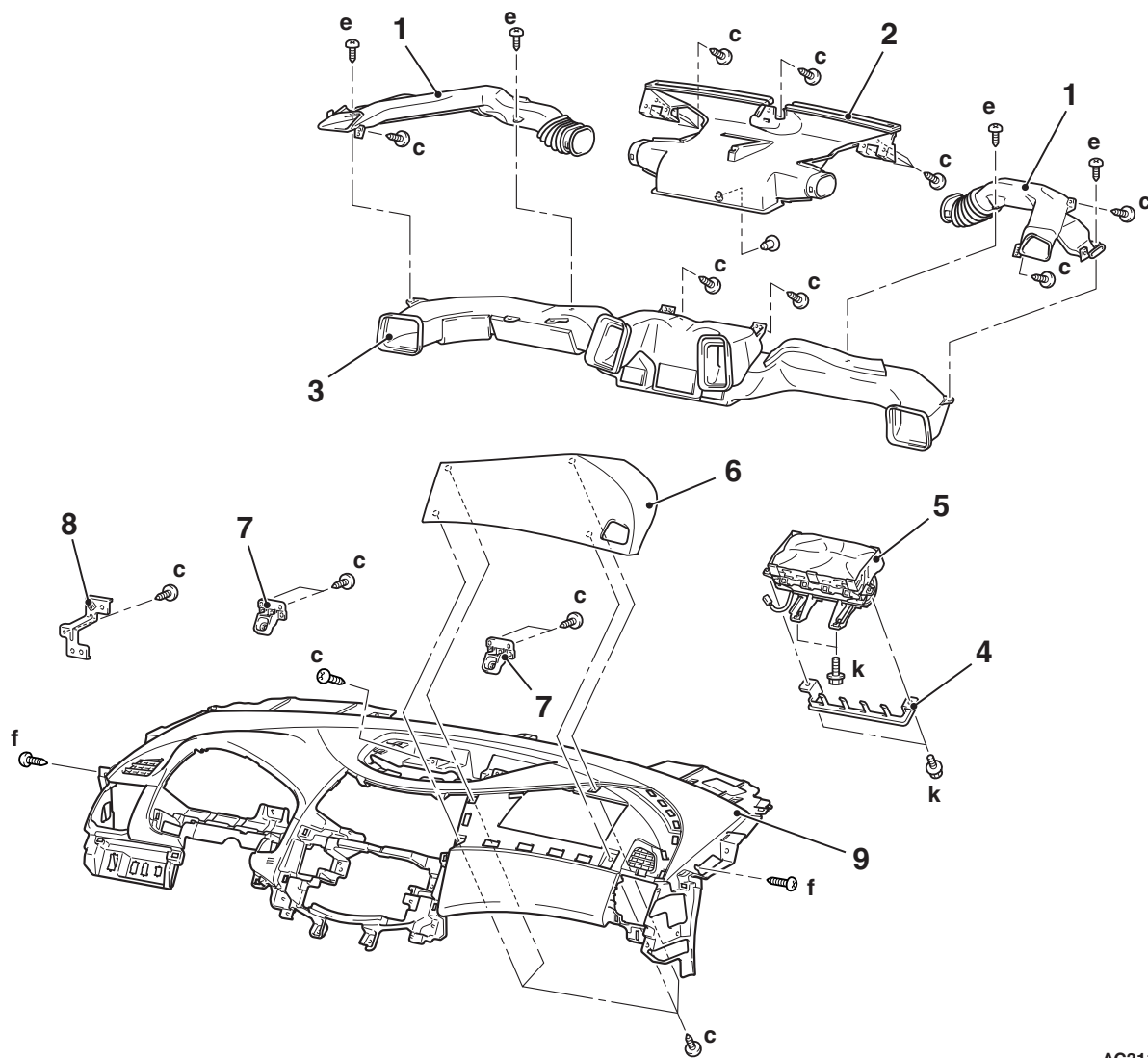
- Clock spring harness connector (6)
2. Clock spring harness connector (4-Y)
3. Column switch harness connector (10)
4. Key reminder switch harness connector (9)
5. Ignition switch harness connector (6)



- Air bag module (squib) (passenger's side) harness connector (2-R)

DISASSEMBLY AND REASSEMBLY

M1521001900343



AC311802AC

Disassembly steps

1. Side defroster duct B
2. Defroster nozzle
3. Distribution duct
4. Backbone bracket
5. Air bag module (passenger's side)
6. Upper side lid
7. Side upper bracket
8. Bracket
9. Instrument panel

<<A>>

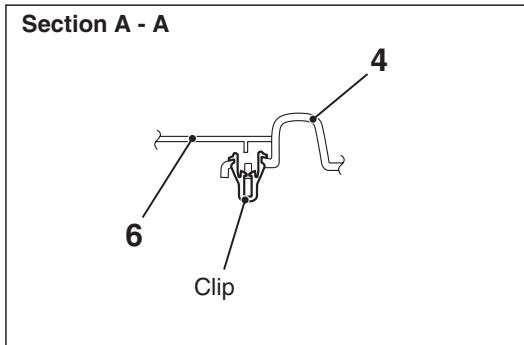
REMOVAL SERVICE POINT**<<A>> PASSENGER'S (FRONT) AIR BAG
MODULE REMOVAL****⚠ WARNING**

- *Never use an electric tester to diagnose the air bag module circuit. Never attempt to disassemble the air bag module.*
- *The removed front passenger's air bag module should be stored in a clean, dry place with the deployment surface facing up.*

FLOOR CONSOLE ASSEMBLY

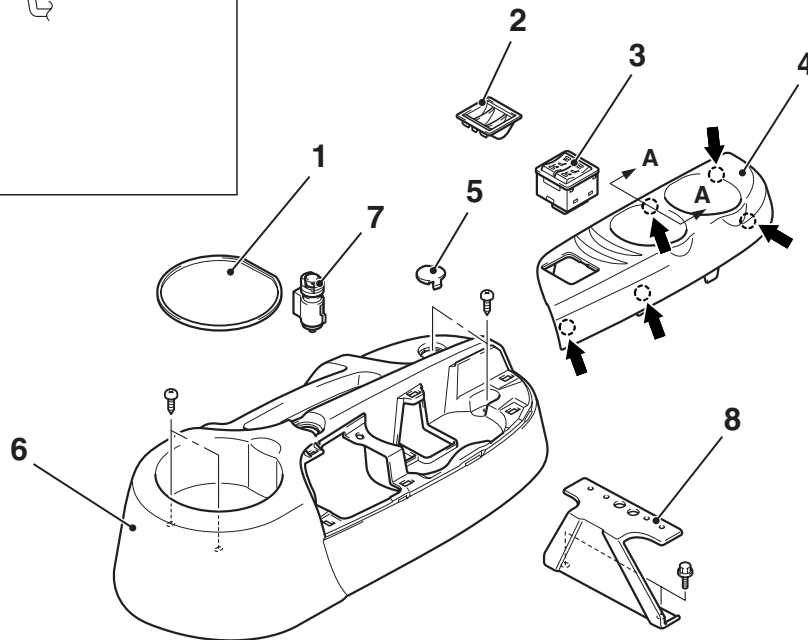
REMOVAL AND INSTALLATION

M1521002200347



NOTE

← : Clip position



AC312130AB

Removal steps

1. Floor console box mat
2. Coin holder <Vehicles without heated seat>
3. Seat heater switch <Vehicles with heated seat>
4. Floor console panel

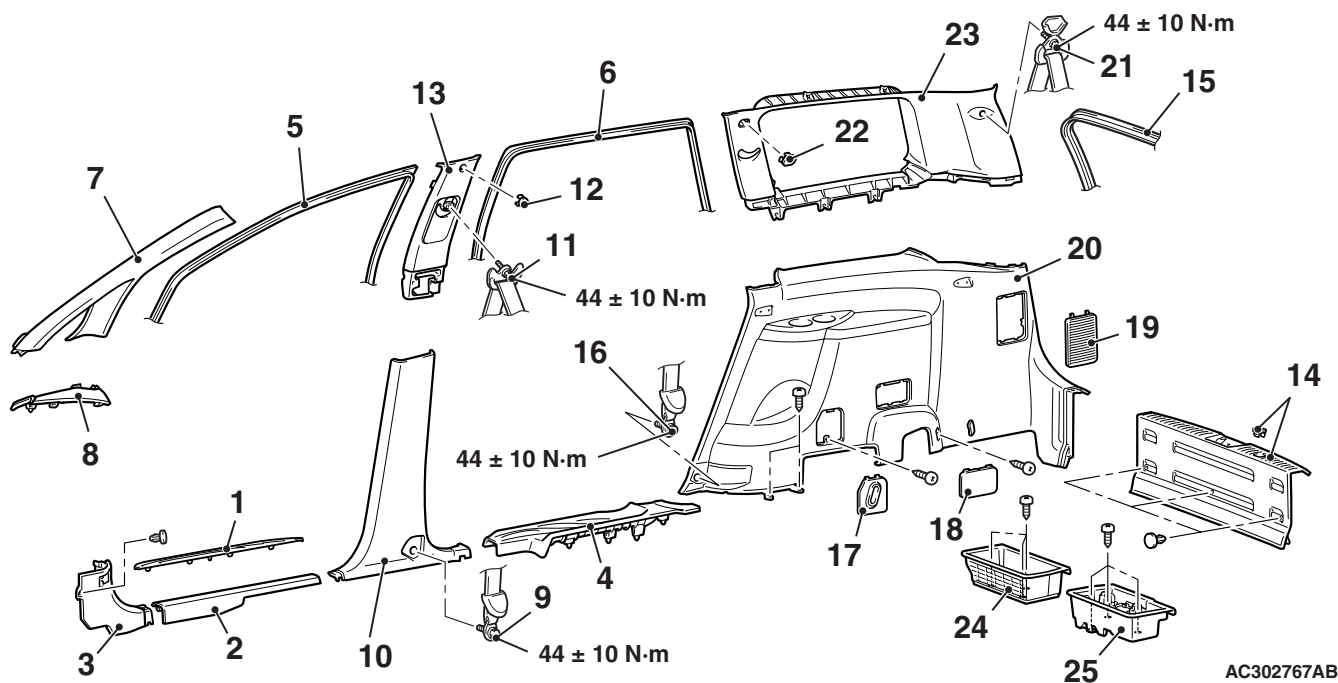
Removal steps (Continued)

5. Floor console plug
6. Floor console
7. Cigar lighter <LH drive vehicles>
8. Floor console bracket

INTERIOR TRIM

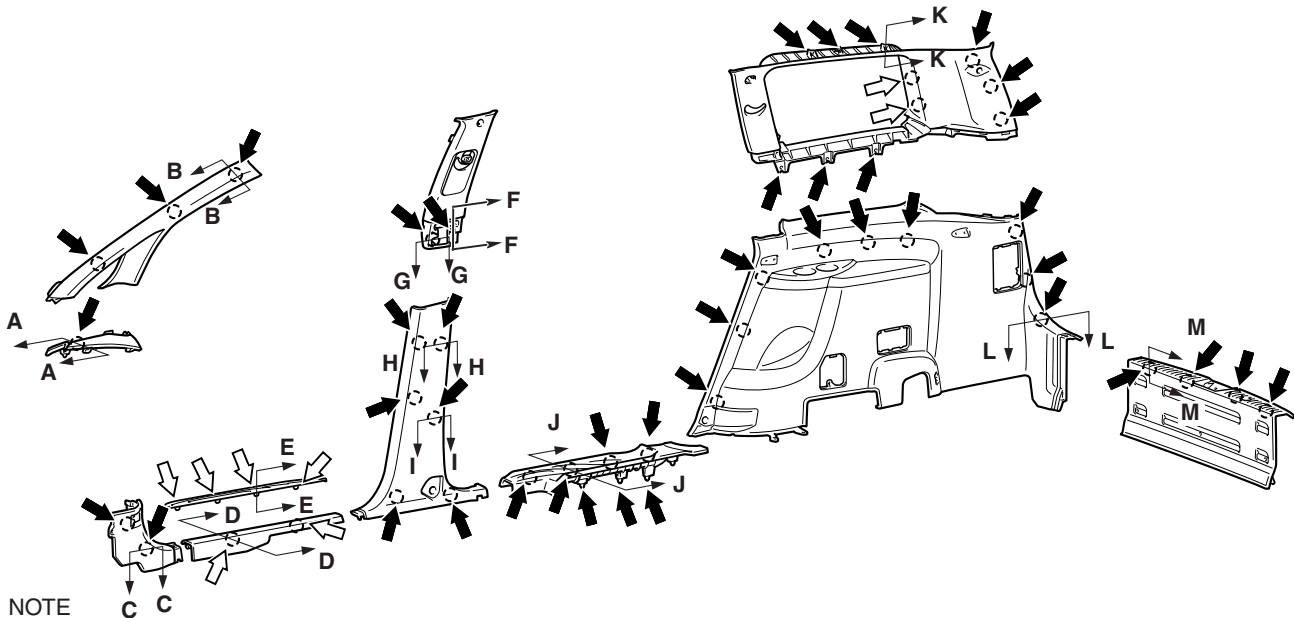
REMOVAL AND INSTALLATION

M1521001100400



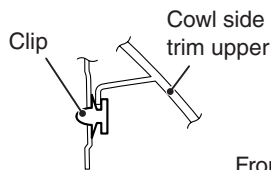
- | | |
|--|--|
| 1. Front scuff plate outer | 14. Rear end trim |
| 2. Front scuff plate inner | 15. Tailgate opening trim |
| 3. Cowl side trim | 16. Second seat belt lower anchor bolt |
| 4. Scuff plate rear | 17. Quarter trim plug |
| 5. Front door opening trim | 18. Quarter trim rear lid |
| 6. Rear door opening trim | 19. Quarter side cover |
| 7. Front pillar trim | 20. Quarter trim lower |
| 8. Cowl side trim upper | 21. Third seat belt shoulder anchor bolt |
| 9. Front seat belt lower anchor bolt | 22. Quarter trim cap |
| 10. Centre pillar trim lower | 23. Quarter trim upper |
| 11. Front seat belt shoulder anchor bolt | 24. Rear floor secret box |
| 12. Centre pillar trim plug | 25. Luggage floor box |
| 13. Centre pillar trim upper | |

CLIP AND CLAW POSITION

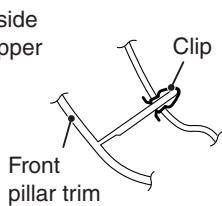


NOTE
(1) : Clip position
(2) : Claw position

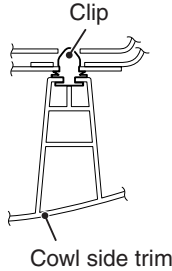
Section A – A



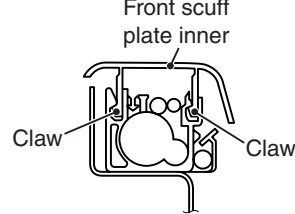
Section B – B



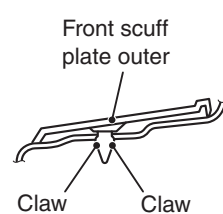
Section C – C



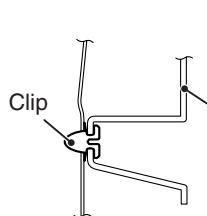
Section D – D



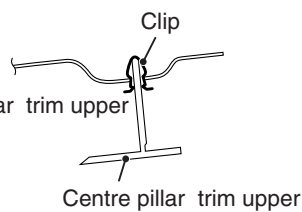
Section E – E



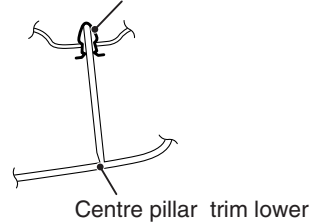
Section F – F



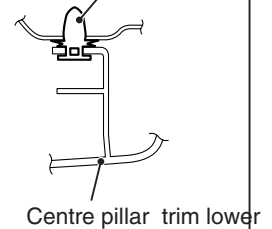
Section G – G



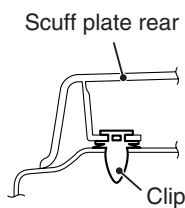
Section H – H



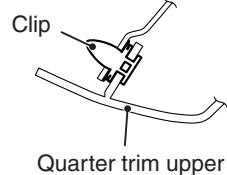
Section I – I



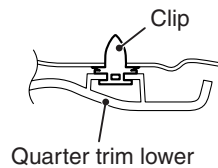
Section J – J



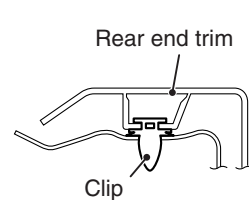
Section K – K



Section L – L



Section M – M

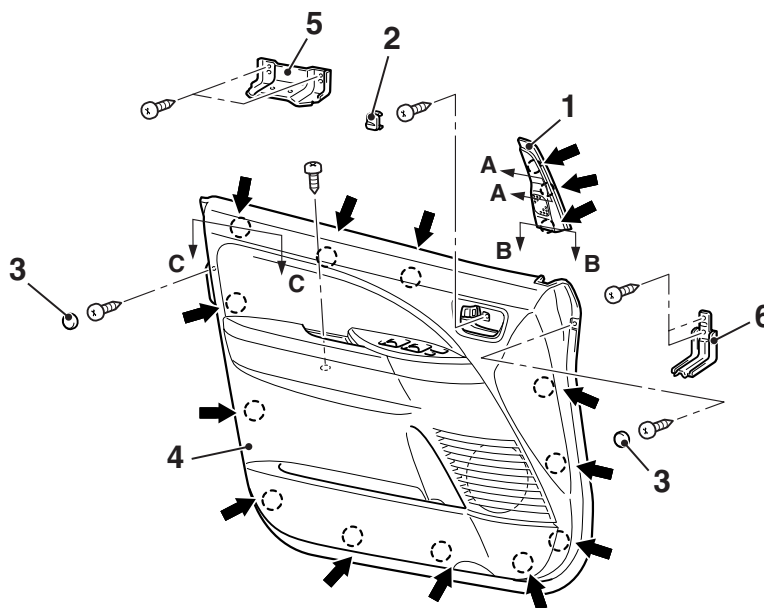


DOOR TRIM

REMOVAL AND INSTALLATION

M1521006400138

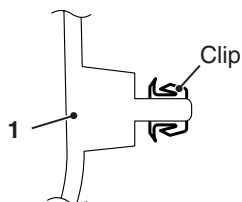
<Front door trim>



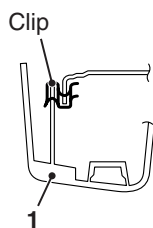
NOTE

: Clip position

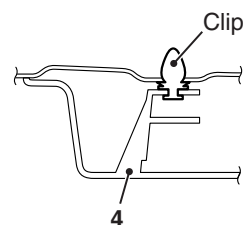
Section A – A



Section B – B



Section C – C



AC310945 AB

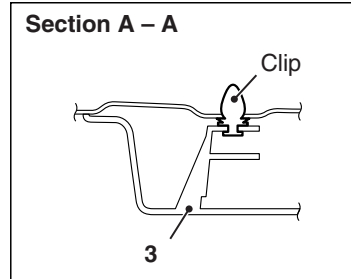
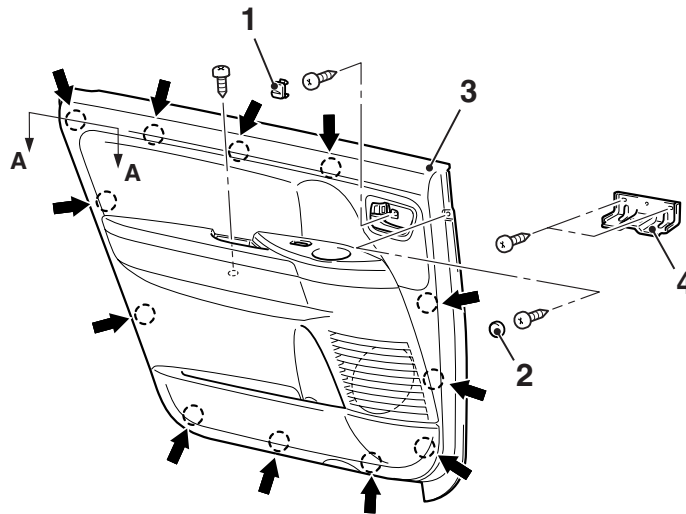
Removal steps

- <<A>> 1. Front door sash trim
 2. Inside handle screw cap
 3. Door trim screw cap
 <> >>A<< 4. Front door trim

Removal steps (Continued)

5. Pull handle bracket (driver's side)
 6. Front door arm rest bracket (passenger's side)

<Rear door trim>



NOTE

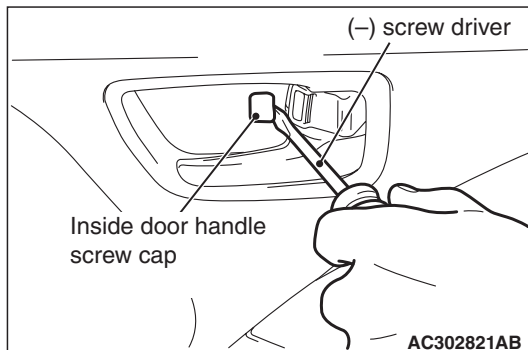
← : Clip position

Removal steps

- <<A>> 1. Inside handle screw cap
2. Door trim screw cap
<> >>A<< 3. Rear door trim
4. Pull handle bracket

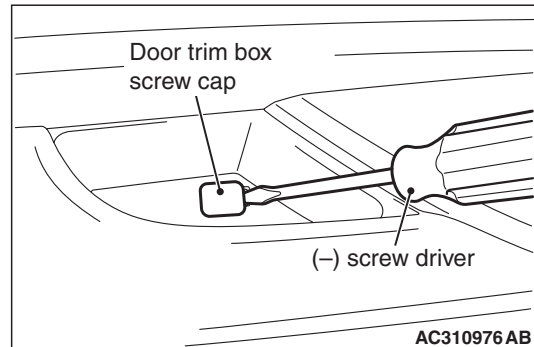
REMOVAL SERVICE POINTS

<<A>> INSIDE DOOR HANDLE SCREW
CAP REMOVAL

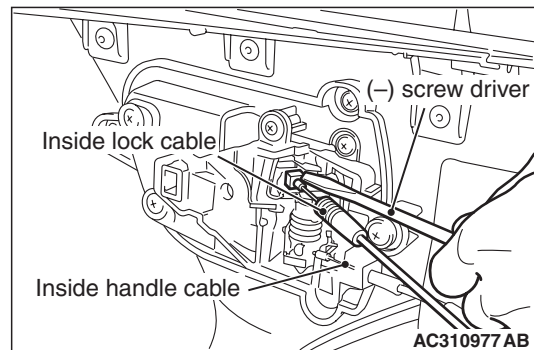


Insert a flat-tipped screwdriver as shown to remove the inside door handle screw cap.

<> FRONT/REAR DOOR TRIM
REMOVAL



1. Insert a flat-tipped screwdriver as shown to remove the door trim box screw cap.



2. Use a flat-tipped screwdriver as shown to remove the inside lock cable and the inside handle cable. Then remove the door trim.

INSTALLATION SERVICE POINT

DISASSEMBLY AND REASSEMBLY

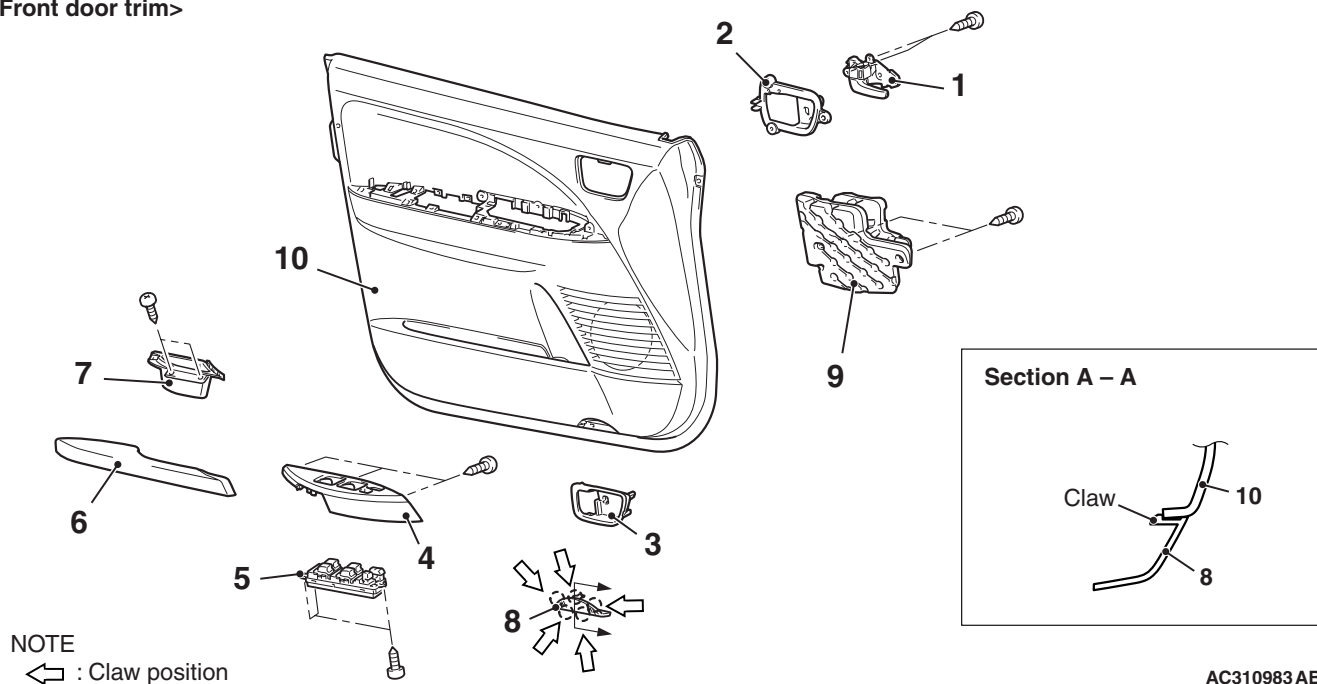
M1521006900092

>>A<< FRONT/REAR DOOR TRIM

INSTALLATION

When the power window switch is removed or replaced, make the power windows learn the fully closed position (Refer to GROUP 42, Door Glass and Regulator P.42-35).

<Front door trim>

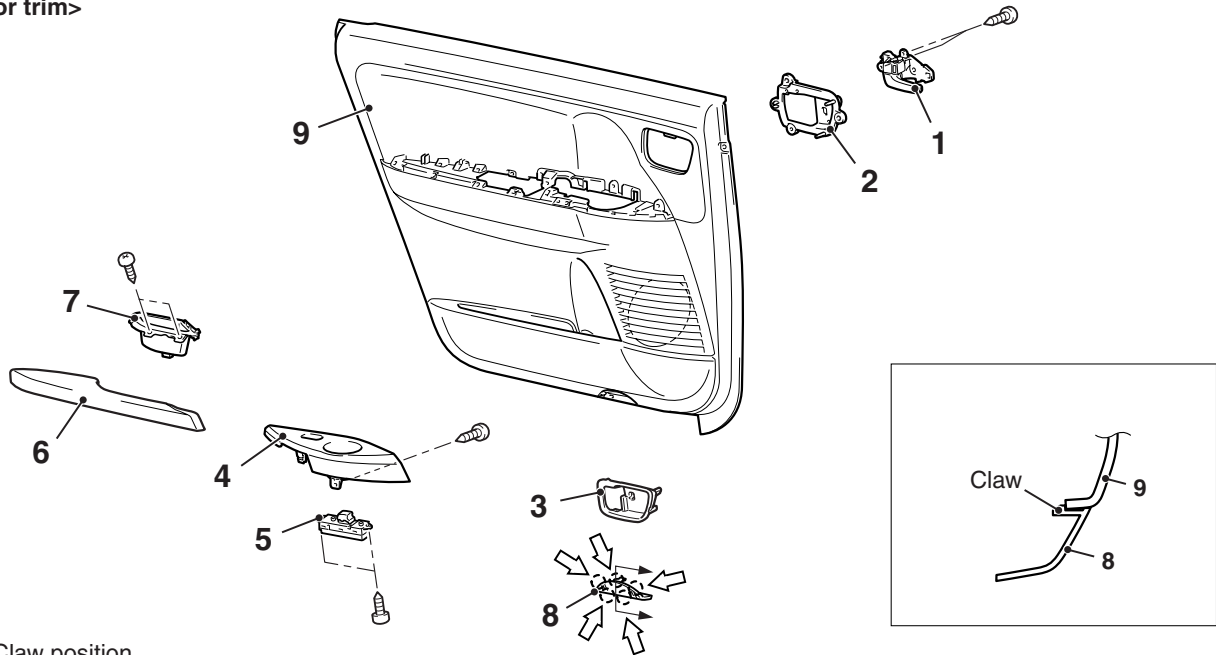
Front door trim disassembly
steps

- >>A<<
1. Inside door handle
 2. Support panel
 3. Inside handle bezel
 4. Power window switch panel
 5. Power window switch

Front door trim disassembly
steps (Continued)

6. Front door armrest
7. Door trim box
8. Front door courtesy lamp lens
9. Front door panel inner core
10. Front door trim

<Rear door trim>



NOTE

↩ : Claw position

AC310985 AB

**Rear door trim disassembly
steps**

- >>A<<
1. Inside door handle
 2. Support panel
 3. Inside handle bezel
 4. Power window switch panel
 5. Power window switch
 6. Rear door armrest
 7. Door trim box
 8. Rear door courtesy lamp lens
 9. Rear door trim

REASSEMBLY SERVICE POINT

>>A<< INSIDE DOOR HANDLE

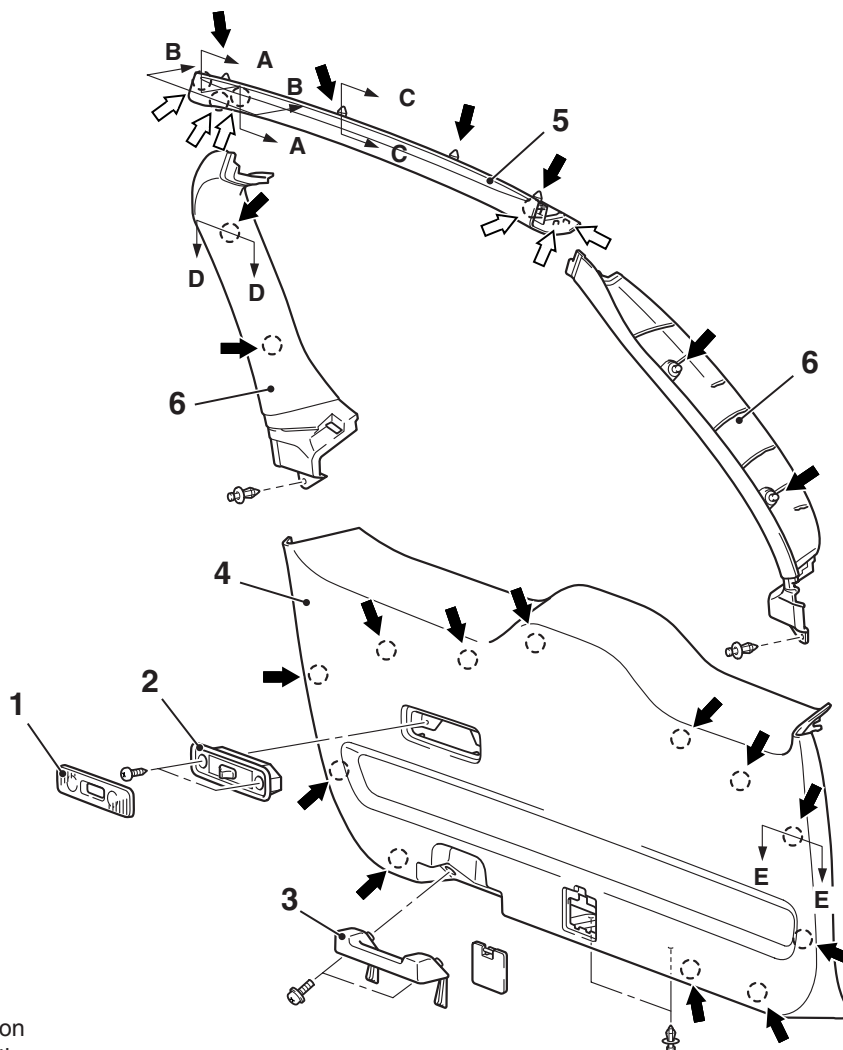
REASSEMBLY

After removing the door inside handle, check it
(Refer to GROUP42, On-vehicle Service [P.42-29](#)).

TAILGATE TRIM

REMOVAL AND INSTALLATION

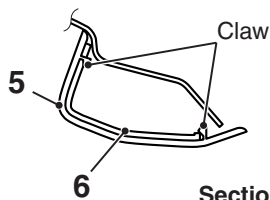
M1521006500083



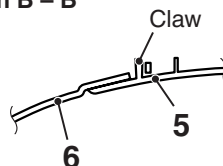
NOTE

- (1) : Clip position
 (2) : Claw position

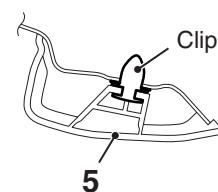
Section A – A



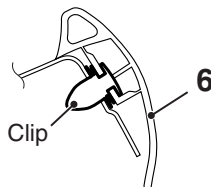
Section B – B



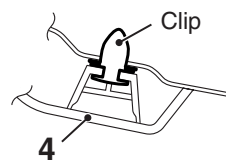
Section C – C



Section D – D



Section E – E



AC303037AB

Removal steps

1. lens
2. Luggage room lamp
3. Tailgate grip

Removal steps (Continued)

4. Lower tailgate trim
5. Upper tailgate trim
6. Tailgate opening side trim

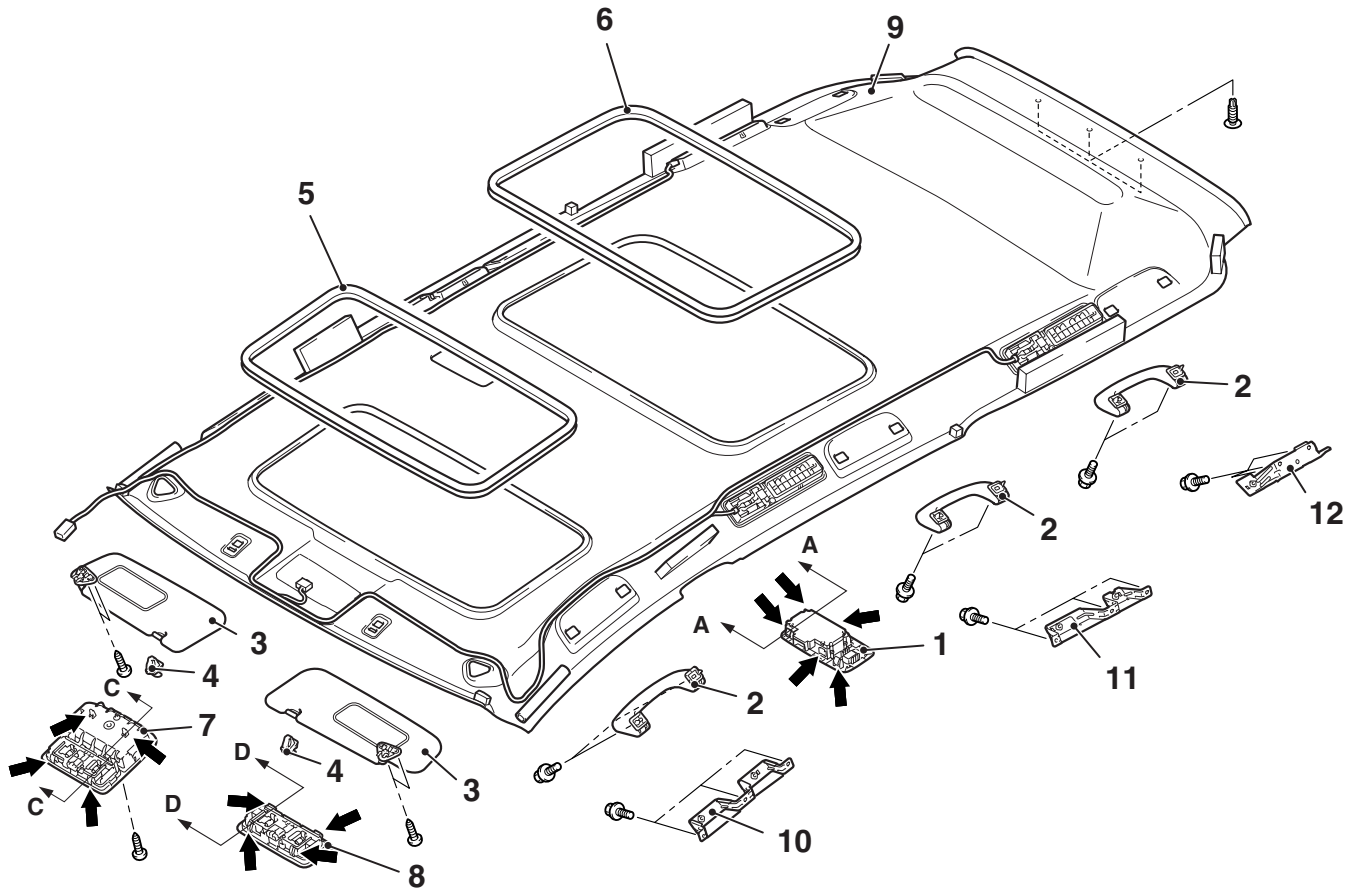
HEADLINING

REMOVAL AND INSTALLATION

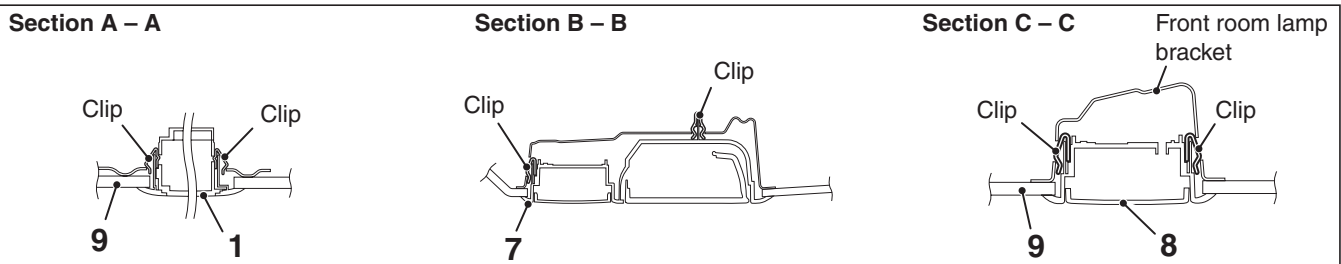
M1521001400326

CAUTION

For the removal of the headlining, refer to GROUP 52B, Service Precautions [P.52B-7](#) and Side and Curtain Air Bag Module [P.52B-231](#).



NOTE
← : Clip position



AC311006 AB

Removal steps

- Third seat assembly (Refer to [P.52A-33](#)).
 - Quarter trim upper, centre pillar trim upper, front pillar trim (Refer to [P.52A-10](#)).
1. Rear heater controller assembly
 2. Roof inside assist grip
 3. Sun visor
 4. Sun visor holder

Removal steps (Continued)

5. Sun roof lid inner weather lid
<Vehicles with sunroof>
6. Sunroof lid inner weather strip rear
<Vehicles with sunroof>
7. Front room lamp assembly
<Vehicles without sunroof>
8. Front room lamp assembly
<Vehicles with sunroof>
9. Headlining assembly
10. Assist grip bracket front

<<A>>

<>

<>

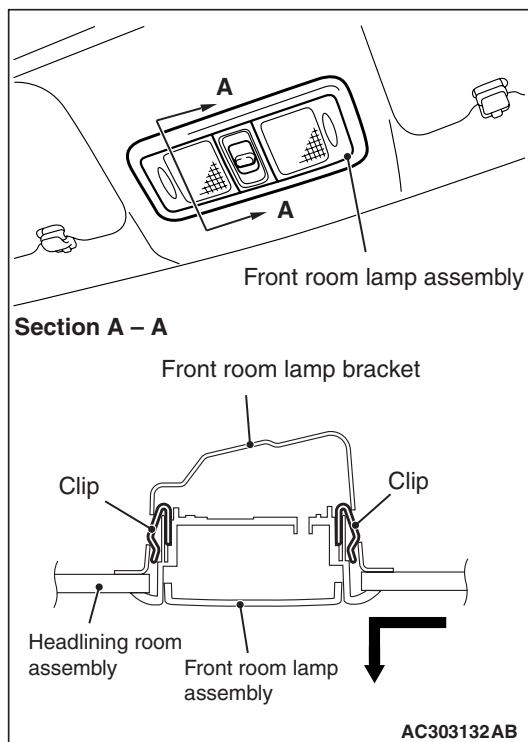
<<C>>

Removal steps (Continued)

11. Assist grip bracket centre
12. Assist grip bracket rear

REMOVAL SERVICE POINTS**<<A>> SUNVISOR HOLDER REMOVAL**

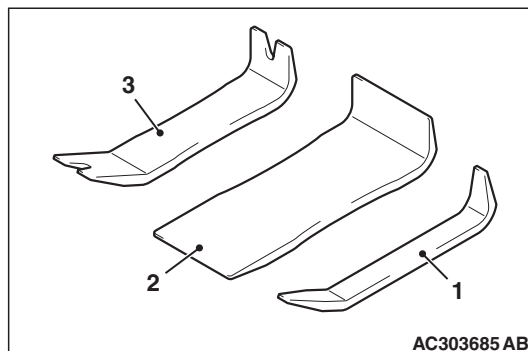
Use a flat-tipped screwdriver to disengage the tab of the sunvisor holder, and remove it using moderate pressure from the forefinger and thumb.

<> FRONT ROOM LAMP ASSEMBLY REMOVAL

Slide down the front room lamp assembly by pushing it forwards to disengage the front room lamp assembly from the front room lamp bracket. Then remove the front room lamp assembly.

<<C>> HEADLINING ASSEMBLY REMOVAL

The following tools are recommended for removing the headlining assembly.

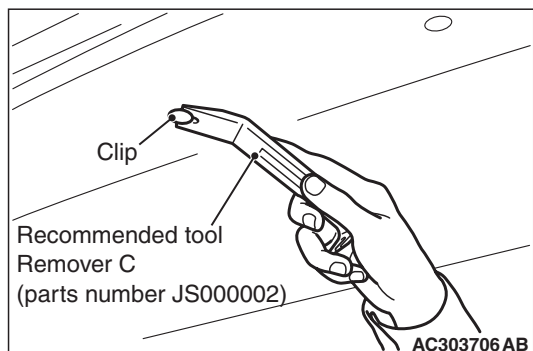


Ornament remover set (parts number JS000004)

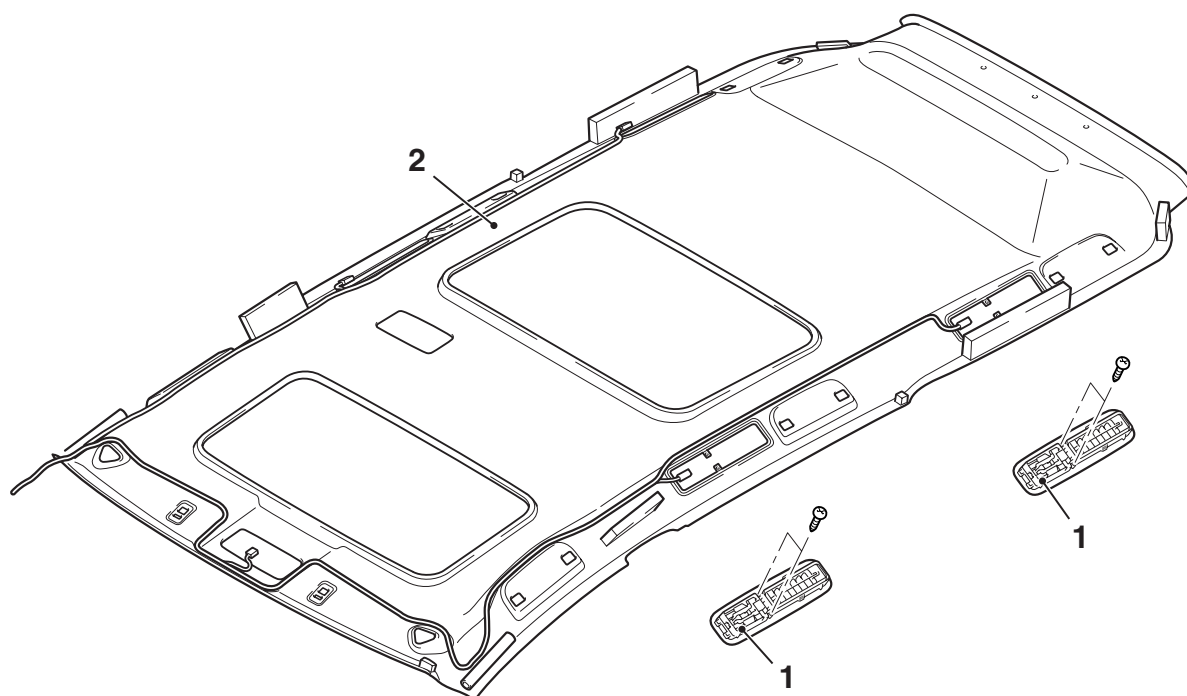
1. Remover A (parts number JS000001)
2. Remover B (parts number JS000003)
3. Remover C (parts number JS000002)

DISASSEMBLY AND REASSEMBLY

M1521009100028



Use the recommended tool Remover C (parts number JS000002) as shown to remove the clip.



AC311012 AB

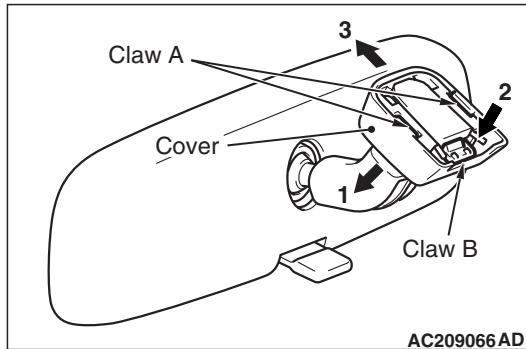
Disassembly steps

1. Rear personal lamp
2. Headlining

INSIDE REARVIEW MIRROR

M1521002600204

REMOVAL SERVICE POINT



1. Disengage the claw A and lower the cover toward arrow 1 direction.
2. Push the claw B toward arrow 2 direction to unlock, and pull out the mirror toward arrow 3 direction.

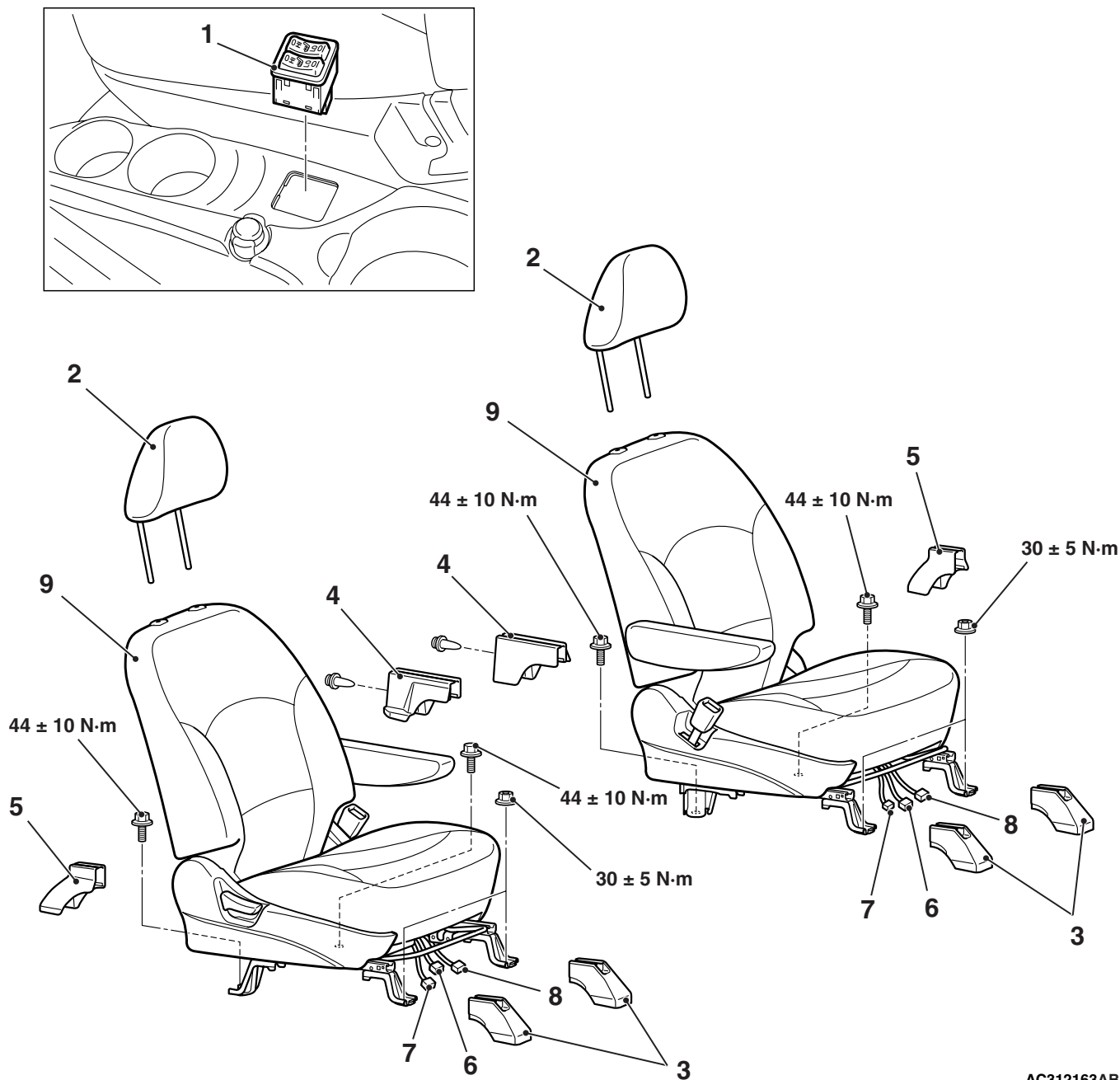
FRONT SEAT ASSEMBLY

REMOVAL AND INSTALLATION

M1522001300333

CAUTION

For the removal of the front seat assembly on vehicles with the side air bags, refer to GROUP 52B, Service Precautions [P.52B-7](#) and Side and Curtain Air Bag Module [P.52B-231](#).



AC312163AB

Removal steps (Continued)

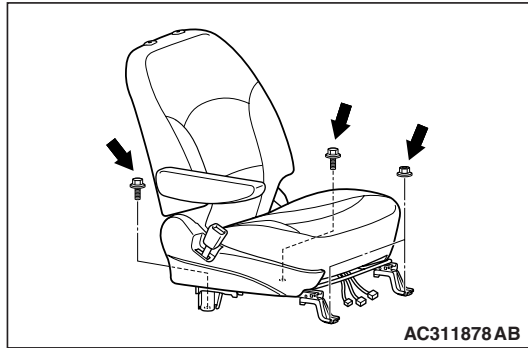
7. Side-air bag module (squib) harness connector <Vehicles with side-air bag>
8. Seat heater connector <Vehicles with heated seat>
9. Front seat assembly

1. Heated seat switch <Vehicles with heated seat>
2. Headrest
3. Seat anchor cover front
4. Seat anchor cover rear inner
5. Seat anchor cover rear outer
6. Seat belt switch harness connector

INSTALLATION SERVICE POINT

>>A<< FRONT SEAT ASSEMBLY

INSTALLATION



1. Confirm that the seat slide is locked. Then temporarily tighten all the nuts and bolts with no load applied to the front seat cushion.
2. Tighten all the nuts and bolts to the specified torque.

Tightening torque:

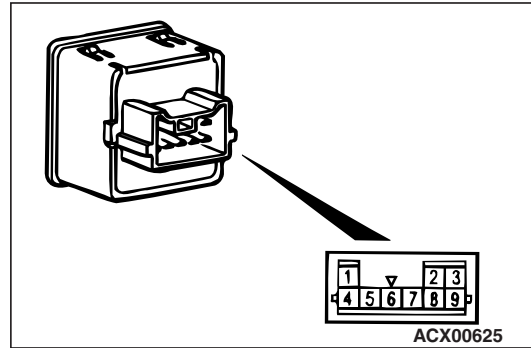
Bolt: 44 ± 10 N·m

Nut: 30 ± 5 N·m

INSPECTION

HEATED SEAT SWITCH CHECK

M1522005500146



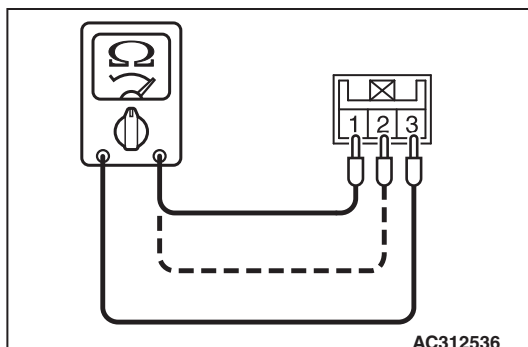
1. Check for continuity between terminals.

Items	Switch position	Tester connection	Specified condition
Driver's seat side	HI	1 - 3, 1 - 5, 1 - 8, 3 - 5, 3 - 8, 5 - 8	Less than 2 ohms
	OFF	1 - 3, 1 - 5, 1 - 8, 3 - 5, 3 - 8, 5 - 8	Open circuit
	LO	3 - 5, 3 - 8, 5 - 8	Less than 2 ohms
Front passenger's seat side	HI	4 - 5, 4 - 8, 4 - 9, 5 - 8, 5 - 9, 8 - 9	Less than 2 ohms
	OFF	4 - 5, 4 - 8, 4 - 9, 5 - 8, 5 - 9, 8 - 9	Open circuit
	LO	5 - 8, 5 - 9, 8 - 9	Less than 2 ohms

2. Check that the indicator is lighted at HI or LO when battery voltage is supplied to terminal 5, and terminal 8 is grounded.
3. Check that indicator is lighted when battery voltage is supplied to terminals 2 and 6.

Measured terminals	Resistance value	NOTE
1 - 2	Approximately $4.61 \Omega \pm 9 \%$	At room temperature 20°C
1 - 3	$0.2 \Omega \pm 9 \%$	

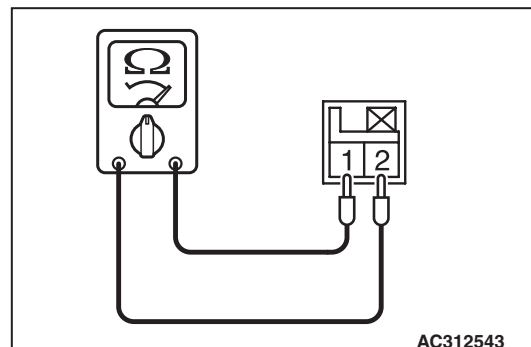
SEAT CUSHION HEATER CHECK



Measure the resistance between terminals.

Standard value:

SEATBACK HEATER CHECK



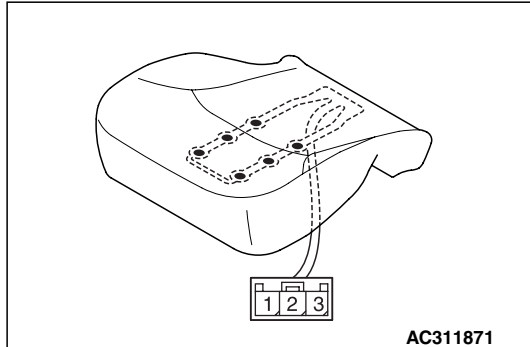
Measure the resistance between terminals.

**Standard value: Approximately $5.2 \Omega \pm 9 \%$
(At room temperature 20°C)**

Measure the resistance between terminals.

Standard value: At room temperature $25 \pm 10^{\circ}\text{C}$

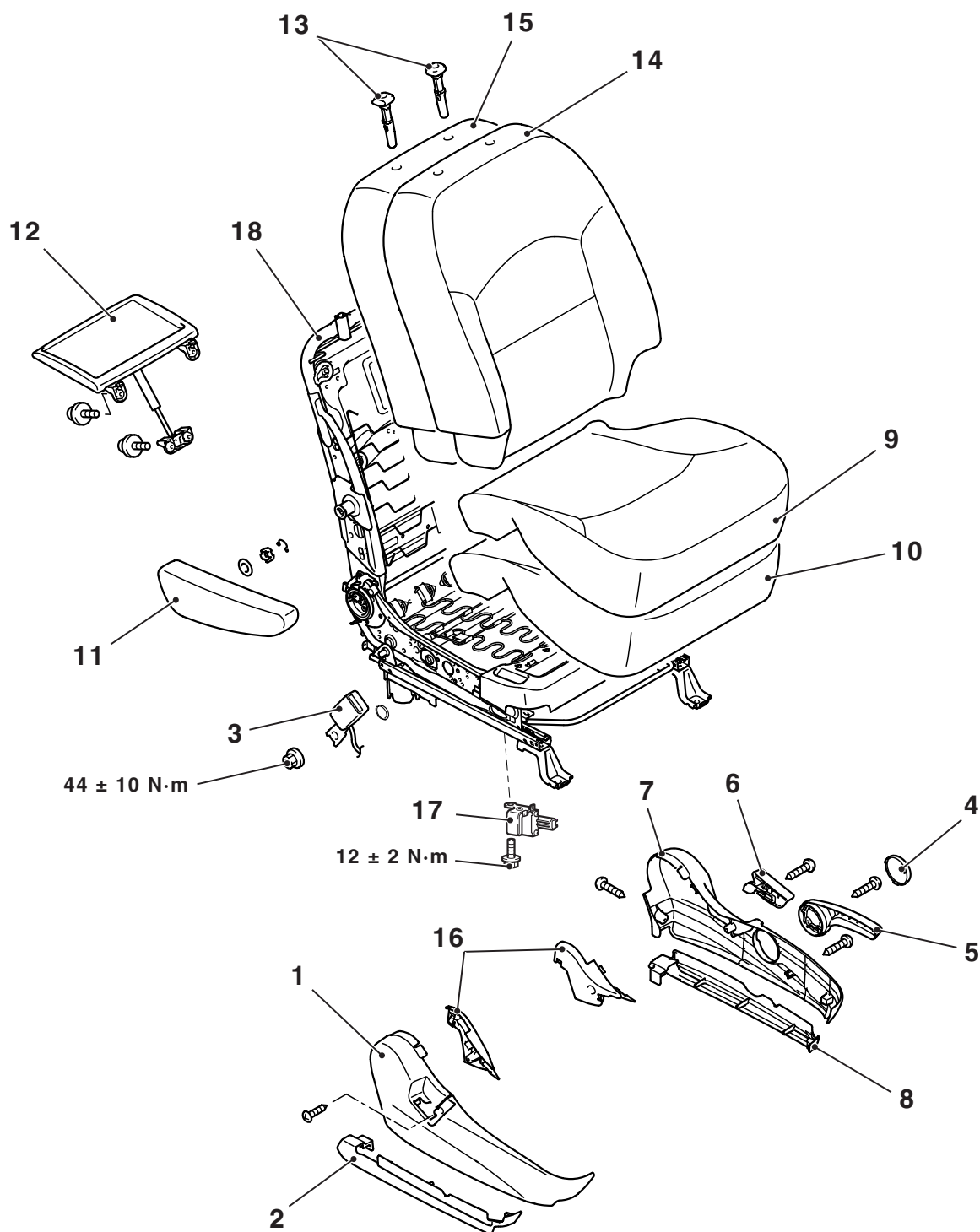
SEAT OCCUPANCY SENSOR (PASSENGER'S SIDE) CHECK



Item	Tester connection	Specified condition
When a weight of 3 kg is placed on the centre at one of the 6 cells of seat occupancy sensor	1 – 3	Less than 100 ohms
When no weight is placed on the seat occupancy sensor	1 – 3	Open circuit

DISASSEMBLY AND REASSEMBLY

M1522001500412



AC311798AB

Disassembly steps

1. Shield cover
2. Upper rail cover inner
3. Inner seat belt
4. Height adjuster lever cap
5. Height adjuster lever
6. Reclining lever

Disassembly steps (Continued)

7. Reclining adjuster cover
8. Upper rail cover outer
9. Seat cushion cover
10. Seat cushion pad
11. Armrest assembly
12. Personal table assembly
13. Headrest guide

<<A>>

Disassembly steps (Continued)

14. Seatback cover
15. Seatback pad
16. Inner cover

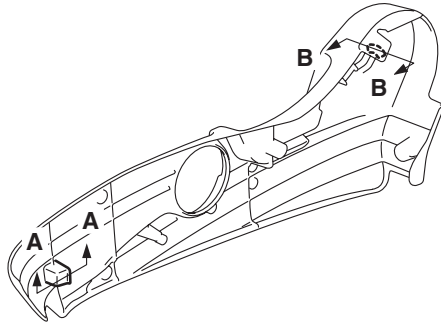
<>

Disassembly steps (Continued)

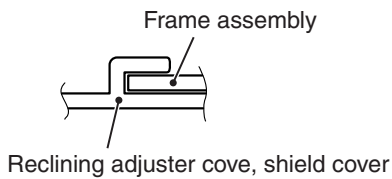
17. Slide sensor
18. Frame assembly

CLAW POSITION

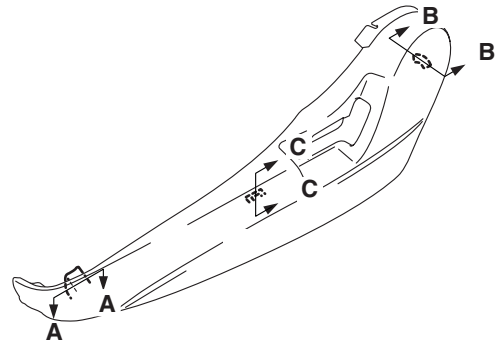
<Reclining adjuster cover>



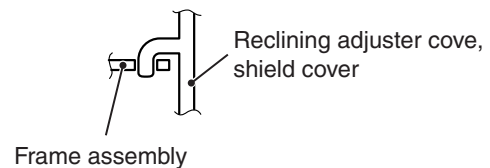
Section A – A



<Shield cover>



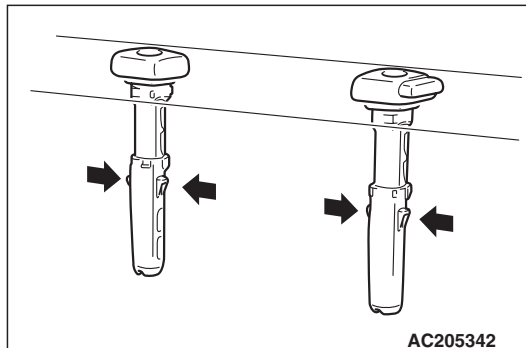
Section B – B



AC311070AB

DISASSEMBLY SERVICE POINTS

<<A>> HEADREST GUIDE REMOVAL



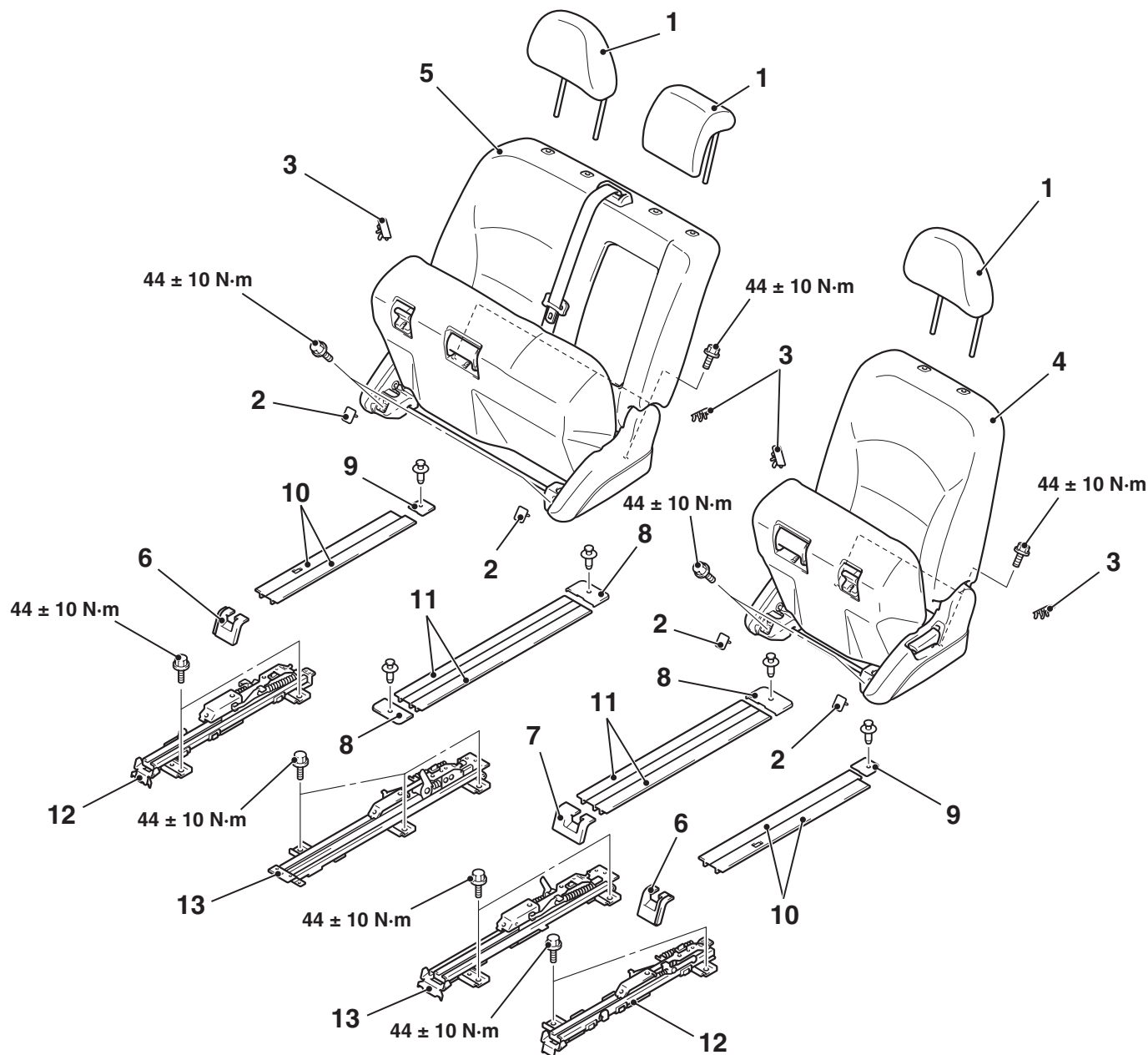
AC205342

<> FRAME ASSEMBLY REMOVAL

Do not remove the side air bag module from the frame.

SECOND SEAT ASSEMBLY**REMOVAL AND INSTALLATION**

M1522002300024



AC311806AB

1. Head rest
- Removal steps**
2. Shield inner cover cap front
3. Shield inner cover cap rear
4. Second seat assembly (LH)
5. Second seat assembly (RH)
- Scuff plate rear (Refer to [P.52A-10](#)).
6. Seat anchor cover outer

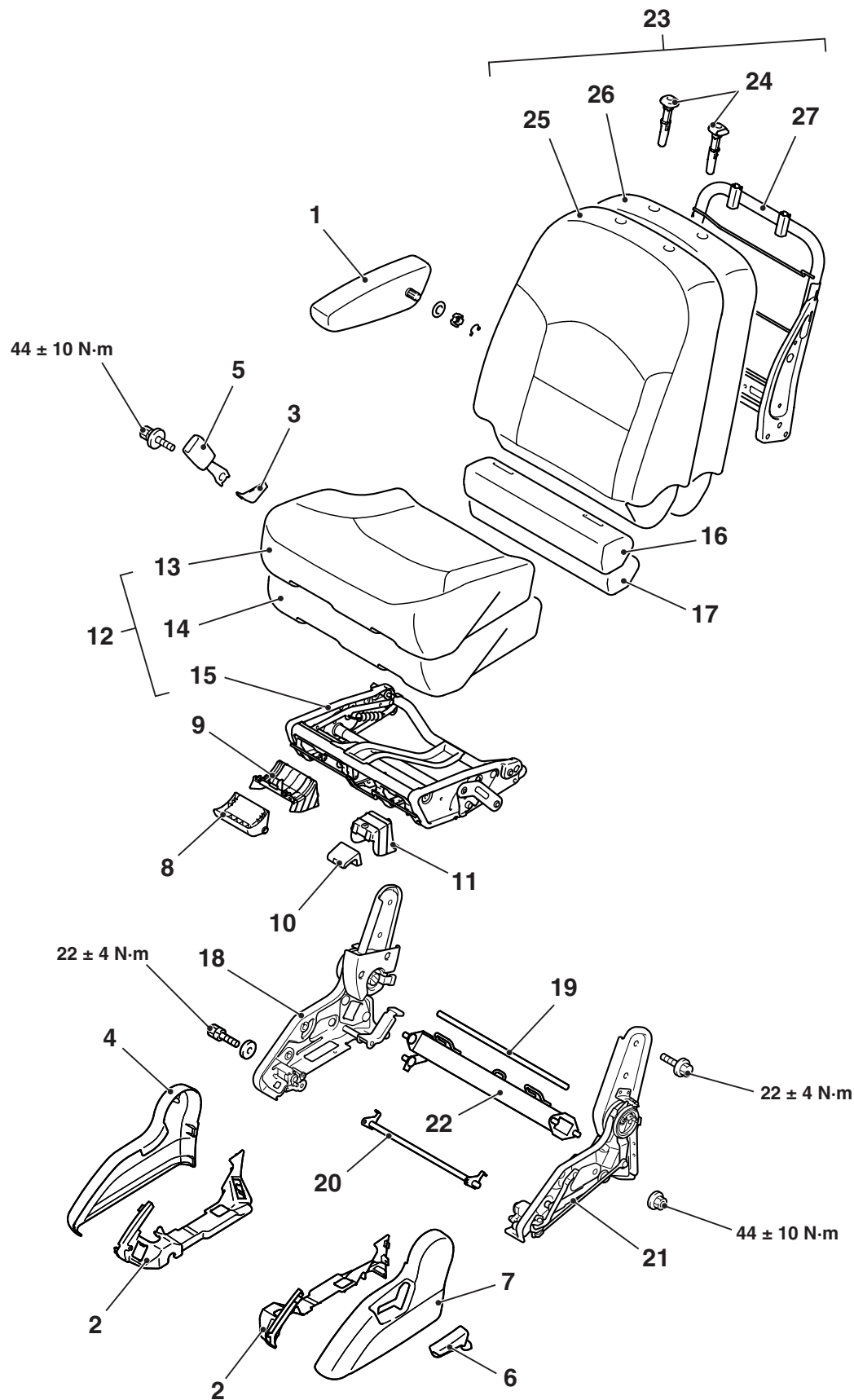
Removal steps (Continued)

7. Seat anchor cover inner
8. Slide adjuster end cover inner
9. Slide adjuster end cover outer
10. Rail cover outer
11. Rail cover inner
12. Slide adjuster outer
13. Slide adjuster inner

DISASSEMBLY AND REASSEMBLY

M1522002500028

<SEPARATE SEAT>



Disassembly steps

1. Armrest assembly
2. Shield cover inner
3. Inner seat belt cap
4. Shield cover
5. Inner seat belt
6. Reclining adjuster lever
7. Reclining adjuster cover
8. Slide lever
9. Slide lever garnish
10. Tip up lever
11. Tip up lever garnish
12. Seat cushion assembly
13. Seat cushion cover
14. Seat cushion pad

<<A>>

Disassembly steps (Continued)

15. Seat cushion frame
16. Sub seat cushion cover
17. Sub seat cushion pad
18. Frame base assembly inner
19. Shaft
20. Shaft
21. Frame base assembly outer
22. Pipe assembly
23. Seatback assembly
24. Headrest guide
25. Seatback cover
26. Seatback pad
27. Seatback frame

1. Shield cover inner
2. Shield cover

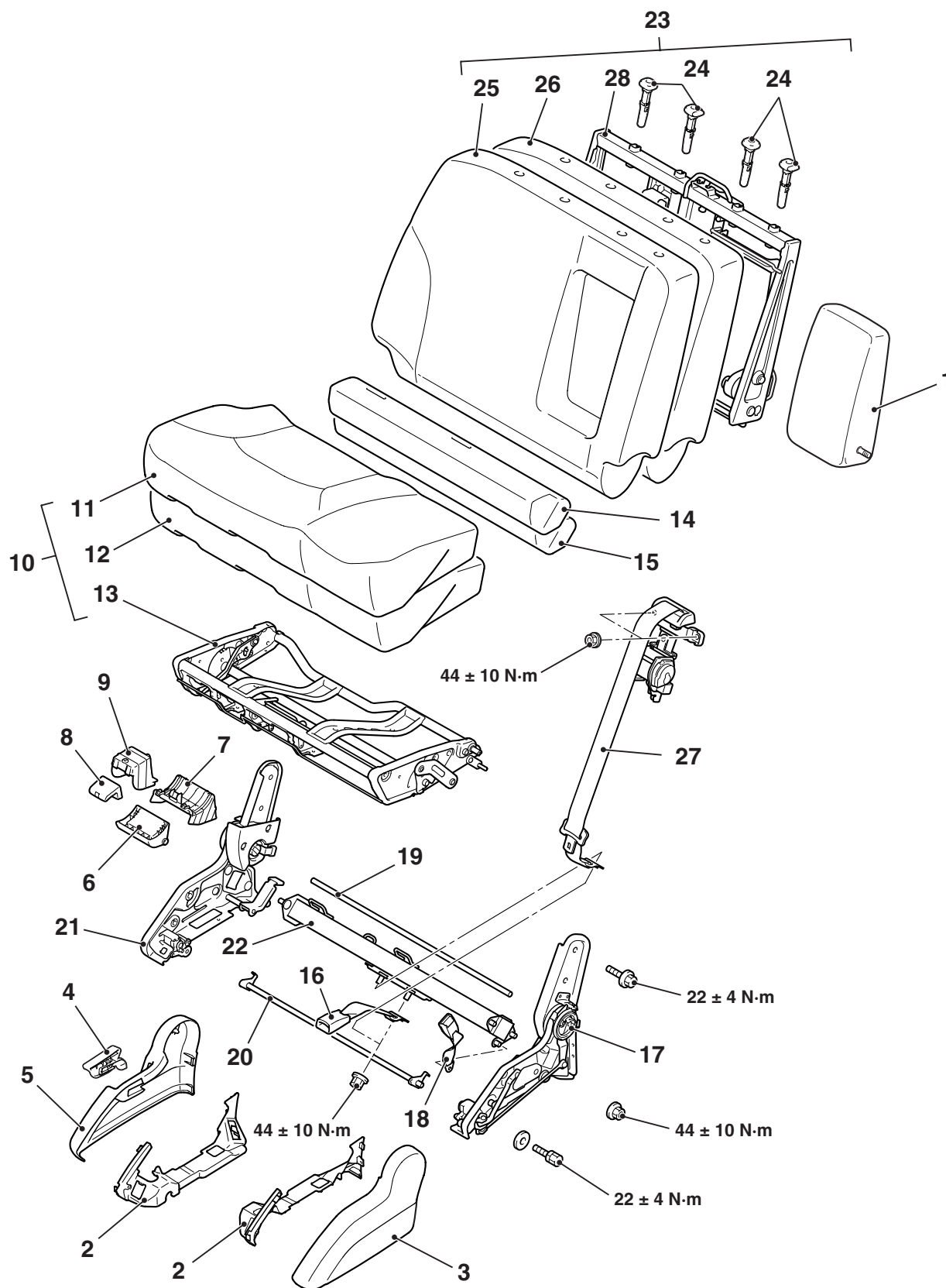
3. Reclining adjuster lever
4. Reclining adjuster cover

Disassembly steps (Continued)

- 5. Slide lever
- 6. Slide lever garnish
- 7. Tip up lever
- 8. Tip up lever garnish
- 9. Seat cushion assembly
- 10. Seat cushion cover
- 11. Seat cushion pad
- 12. Seat cushion frame
- 13. Sub seat cushion cover
- 14. Sub seat cushion pad
- 15. Frame base assembly inner
- 16. Inner seat belt
- 17. Shaft
- 18. Shaft
- 19. Frame base assembly outer
- 20. Pipe assembly
- 21. Seatback assembly
- 22. Headrest guide
- 23. Seatback cover
- 24. Seatback pad
- 25. Seatback frame

<<A>>

<BENCH SEAT (RH SIDE) >



AC311807AB

Disassembly steps

1. Armrest assembly
2. Shield cover inner

Disassembly steps (Continued)

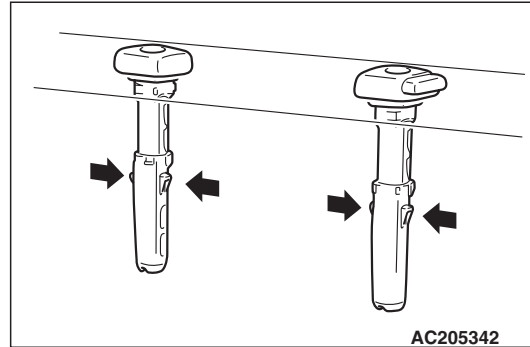
3. Shield cover
4. Reclining adjuster lever

Disassembly steps (Continued)

5. Reclining adjuster cover
6. Slide lever
7. Slide lever garnish
8. Tip up lever
9. Tip up lever garnish
10. Seat cushion assembly
11. Seat cushion cover
12. Seat cushion pad
13. Seat cushion frame
14. Sub seat cushion cover
15. Sub seat cushion pad
16. Inner seat belt
17. Frame base assembly inner
18. Centre seat belt inner
19. Shaft
20. Shaft
21. Frame base assembly outer
22. Pipe assembly
23. Seatback assembly
24. Headrest guide
25. Seatback cover

Disassembly steps (Continued)

26. Seatback pad
27. Centre seat belt outer
28. Seatback frame

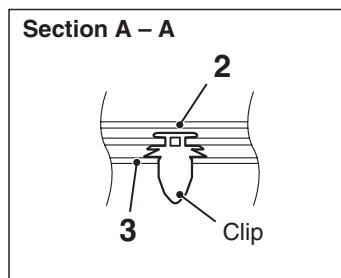
**DISASSEMBLY SERVICE POINT
<<A>> HEADREST GUIDE REMOVAL**

<<A>>

THIRD SEAT ASSEMBLY

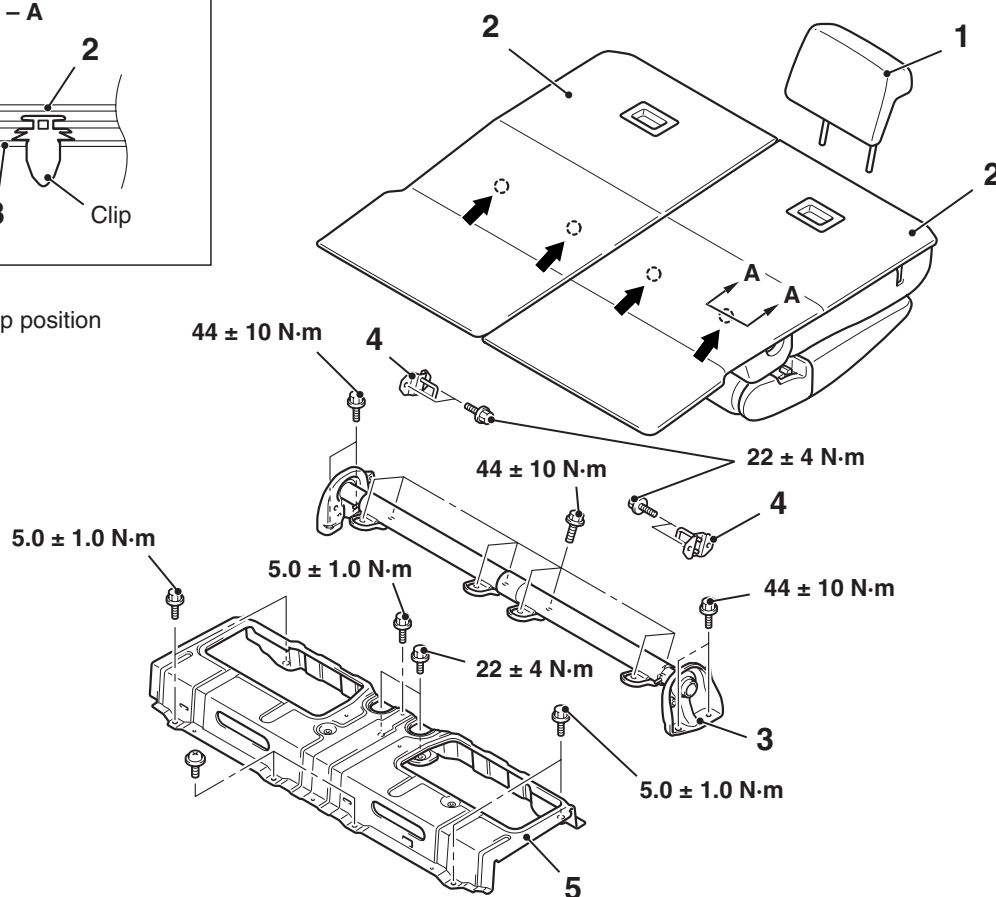
REMOVAL AND INSTALLATION

M1522002800030



NOTE

← : Clip position



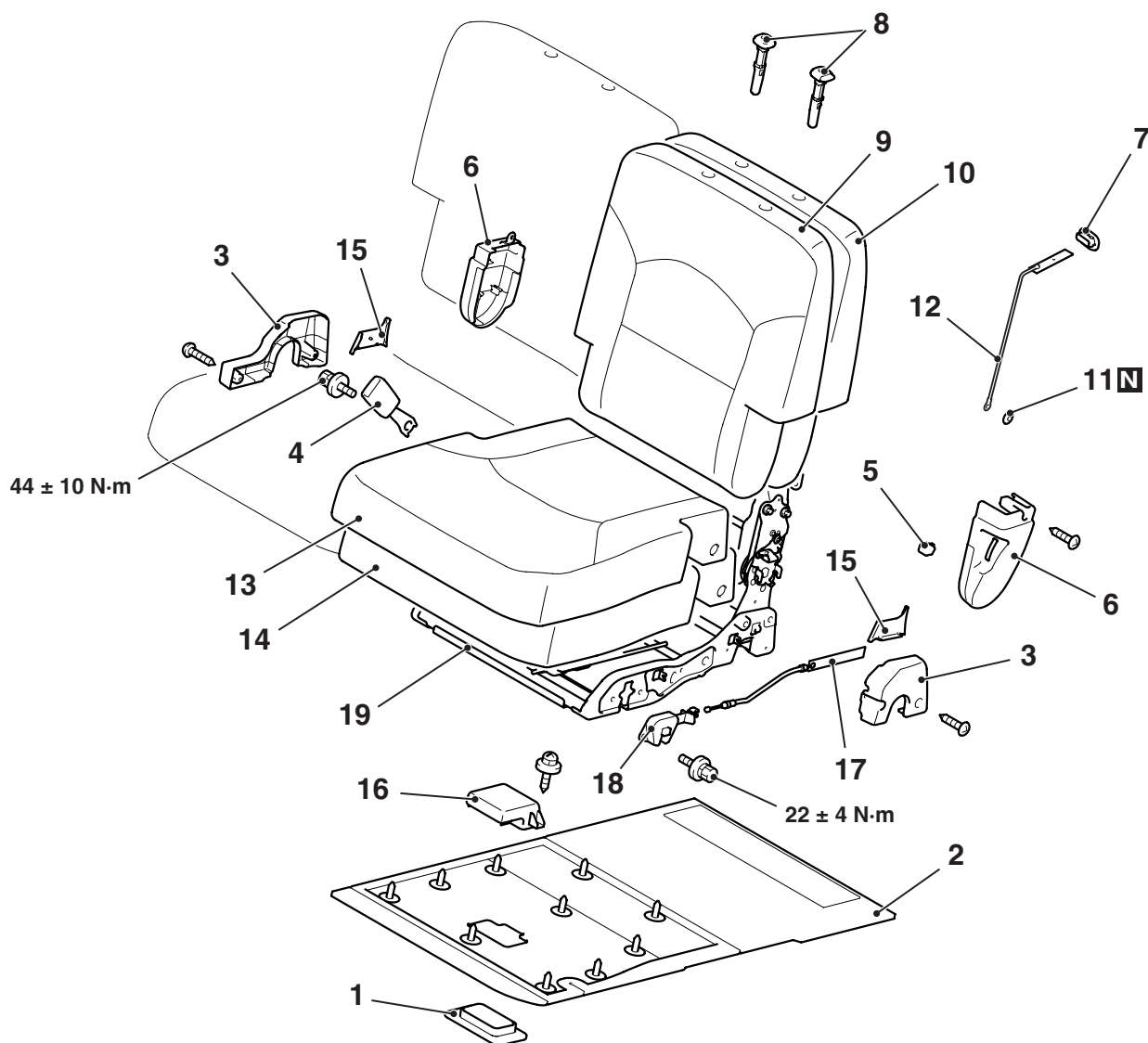
AC312525 AB

1. Head restraint
- Removal steps**
2. Third seat assembly
3. Shaft assembly

- Removal steps (Continued)**
4. Striker
 5. Seat bracket panel assembly

DISASSEMBLY AND REASSEMBLY

M1522003000059



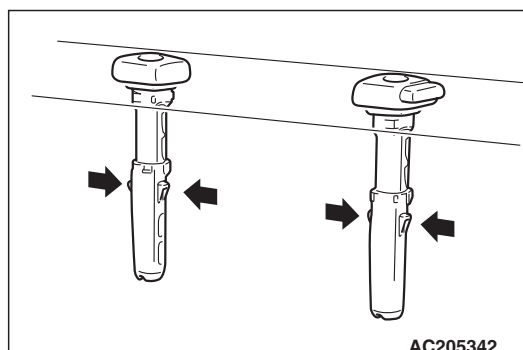
AC311814AB

Disassembly steps

1. Grip garnish
2. Seat cushion panel assembly
3. Outer cover
4. Inner seat belt
5. Reclining adjuster knob
6. Reclining adjuster cover
7. Seatback control cable garnish
8. Headrest guide
9. Seatback cover
10. Seatback pad
11. Clip
12. Rod
13. Seat cushion cover
14. Seat cushion pad
15. Inner cover
16. Grip
17. Seat cushion control cable
18. Seat cushion catch assembly
19. Frame assembly

DISASSEMBLY SERVICE POINT

<<A>> HEADREST GUIDE REMOVA



AC205342

<<A>>

FRONT SEAT BELT

REMOVAL AND INSTALLATION

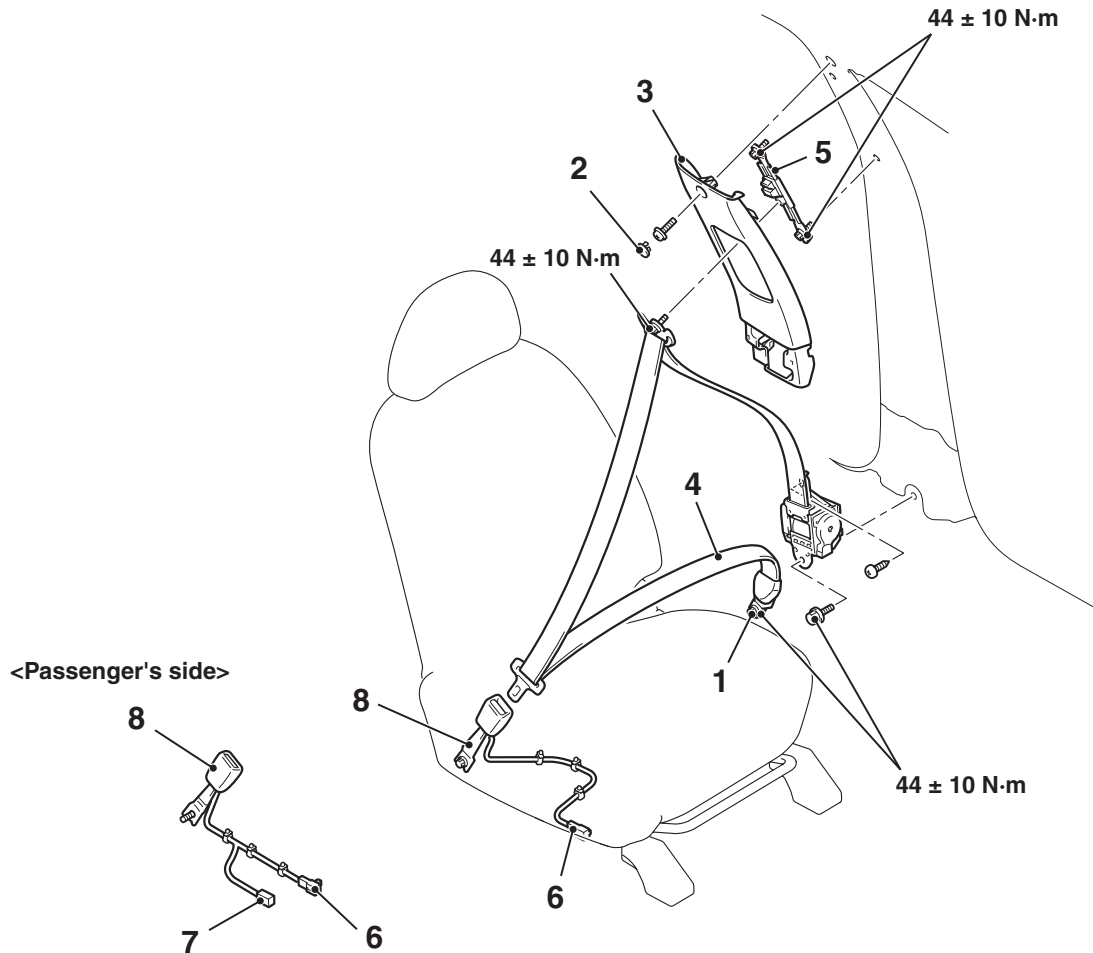
M1523001300325

CAUTION

SRS: Before removing and installing the seat belts with pre-tensioner, refer to GROUP 52B, Service Precautions [P.52B-7](#) and Seat Belt with Pre-tensioner [P.52B-239](#).

Pre-removal and Post-installation Operation

- Turn the ignition key to the LOCK (OFF) position.
- Disconnect the negative battery terminal.



AC311086AC

Outer seat belt removal steps

1. Outer seat belt lower anchor bolt
 - Front scuff plate inner, scuff plate rear, centre pillar trim lower (Refer to [P.52A-10](#)).
2. Centre pillar trim plug
3. Centre pillar trim upper (Refer to [P.52A-10](#)).

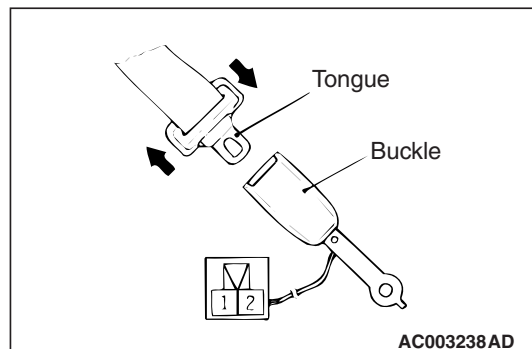
Outer seat belt removal steps

4. Outer seat belt (Refer to GROUP 52B, Seat Belt with Pre-tensioner [P.52B-239](#)).
 5. Adjustable seat belt anchor
- #### Inner seat belt removal
6. Seat belt switch connector
 - Shield cover (Refer to [P.52A-24](#)).
 7. Seat occupancy sensor connector (Passenger's side)
 8. Inner seat belt

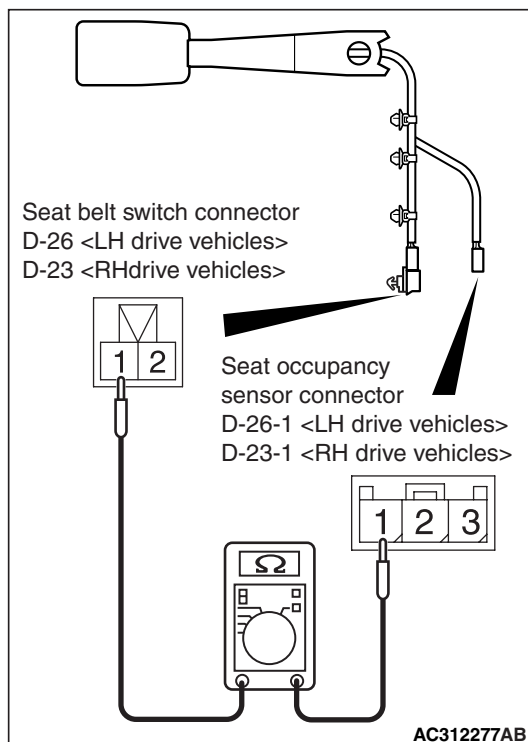
INSPECTION

SEAT BELT SWITCH CONTINUITY CHECK
(DRIVER'S SIDE)

M1523004400097



Item	Tester connection	Specified condition
Fastened seat belt	1 – 2	Open circuit
Unfastened seat belt		Less than 2 ohms

SEAT BELT SWITCH CONTINUITY CHECK
(PASSENGER'S SIDE)

<LH DRIVE VEHICLES>

Item	Tester connection	Specified condition
Fastened seat belt	Connector D-26 (terminal No.1) – D-26-1 (terminal No.1)	Open circuit
Unfastened seat belt		Less than 2 ohms

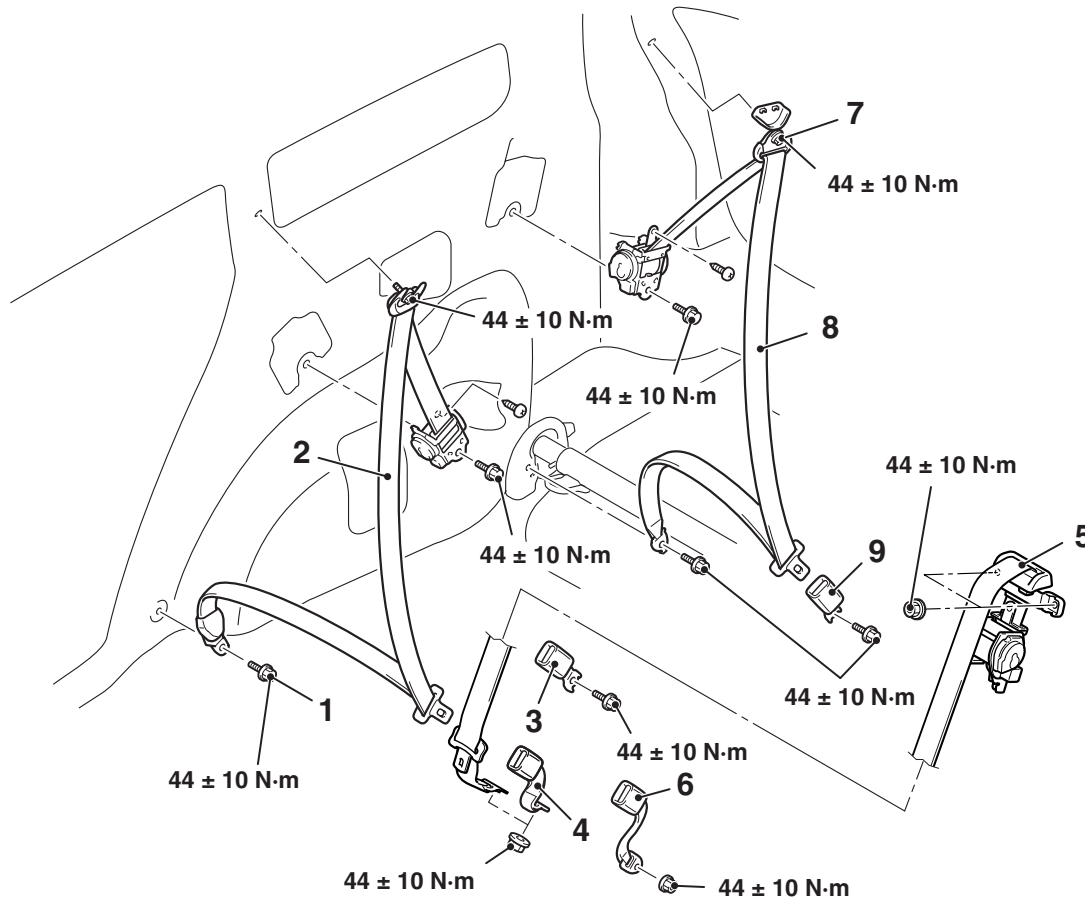
<RH DRIVE VEHICLES>

Item	Tester connection	Specified condition
Fastened seat belt	Connector D-23 (terminal No.1) – D-23-1 (terminal No.1)	Open circuit
Unfastened seat belt		Less than 2 ohms

REAR SEAT BELT

REMOVAL AND INSTALLATION

M1523001600337



AC311825AB

Second seat belt (outer) removal steps

1. Second seat belt lower anchor bolt
- Scuff plate rear (Refer to [P.52A-10](#)).
- Third seat assembly (Refer to [P.52A-33](#)).
- Rear end trim (Refer to [P.52A-10](#)).
- Slide adjuster end cover outer (Refer to [P.52A-26](#)).
- Rear floor secret box, luggage floor box (Refer to [P.52A-10](#)).
- Quarter trim lower (Refer to [P.52A-10](#)).
7. Third seat belt shoulder anchor bolt
- Quarter trim upper (Refer to [P.52A-10](#)).
- Rear heater unit (RH side) (Refer to [P.55-214](#)).
2. Second seat belt

Second seat belt (inner) removal steps <separate seat>

- Shield cover (Refer to [P.52A-27](#)).
- 3. Second inner seat belt

Second seat belt (inner/centre) removal steps <bench seat>

- Seat cushion assembly (Refer to [P.52A-27](#)).
- 4. Inner seat belt
- Seatback pad (Refer to [P.52A-27](#)).
- 5. Centre seat belt outer
- Frame base assembly (Refer to [P.52A-27](#)).
- 6. Centre seat belt inner
- Third seat belt removal steps**
- 7. Third seat belt shoulder anchor bolt
- 8. Third seat belt
- Outer cover (Refer to [P.52A-34](#)).
- 9. Inner seat belt