

GROUP 42

BODY

CONTENTS

GENERAL DESCRIPTION.....	42-2	SPECIAL TOOL.....	42-2
FENDER.....	42-2	REMOVAL AND INSTALLATION	42-3

GENERAL DESCRIPTION

M1421000100303

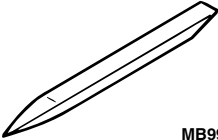
Service procedure has been established due to the following addition. The other information is the same as before.

- The side turn signal light is added to the fender.
- The horn answer back of keyless entry system has been eliminated.

FENDER

SPECIAL TOOL

M1421000600483

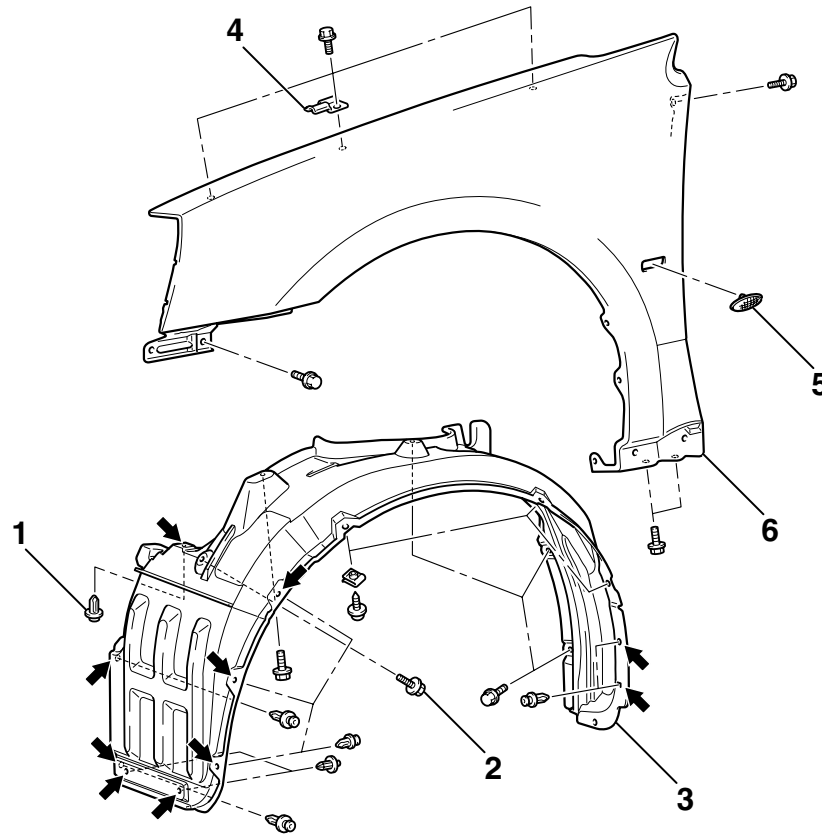
TOOL	TOOL NUMBER AND NAME	SUPERSESSION	APPLICATION
 MB990784	MB990784 Ornament remover	General service tool	Removal of side turn signal light

REMOVAL AND INSTALLATION

M1421001901004

Pre-removal and Post-installation Operation

- Front Bumper Assembly Removal and Installation (Refer to GROUP 51, Front Bumper).
- Front Mud Guard Removal and Installation (Refer to GROUP 51, Mud Guard).
- Headlight Removal and Installation (Refer to GROUP 54A, Headlight and Front Combination Light).



NOTE

← : CLIP POSITIONS

REMOVAL STEPS

1. SPLASH SHIELD MOUNTING CLIP <DRIVER SIDE ONLY>
2. SPLASH SHIELD MOUNTING BOLT <PASSENGER SIDE ONLY>
3. SPLASH SHIELD
4. HOOD DAMPER BRACKET
- DOOR MIRROR COVER (REFER TO GROUP 51, DOOR MIRROR).

REMOVAL STEPS (Continued)

- FRONT DELTA GARNISH (REFER TO GROUP 51, GARNISHES AND MOLDING).
5. SIDE TURN SIGNAL LIGHT
 6. FENDER

<<A>> >>A<<

Required Special Tool:

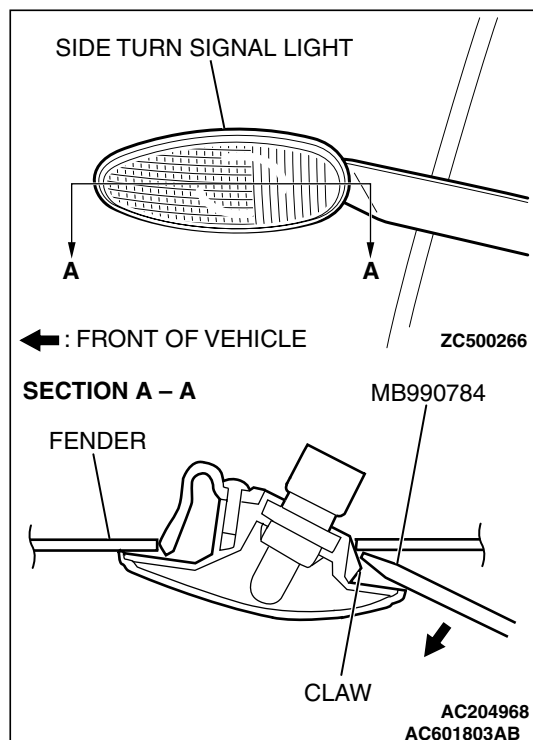
- MB990784: Ornament Remover

AC601802 AB

REMOVAL SERVICE POINT

<<A>> SIDE TURN SIGNAL LIGHT REMOVAL

Use an appropriate tool such as special tool MB990874 to pry out the tab from the fender, and remove the side turn signal light.



INSTALLATION SERVICE POINT

>>A<< SIDE TURN SIGNAL LIGHT INSTALLATION

Engage the hook with the fender panel, and install the side turn signal light.

