
GROUP 11B

ENGINE OVERHAUL

CONTENTS

GENERAL DESCRIPTION.	11B-2	FASTENER TIGHTENING SPECIFICATIONS	
		11B-3
ROCKER ARMS AND CAMSHAFT. .	11B-2		
REMOVAL AND INSTALLATION	11B-2		

GENERAL DESCRIPTION

M1113000101054

The maintenance point is changed with change in the oil filler cap and the PCV valve.

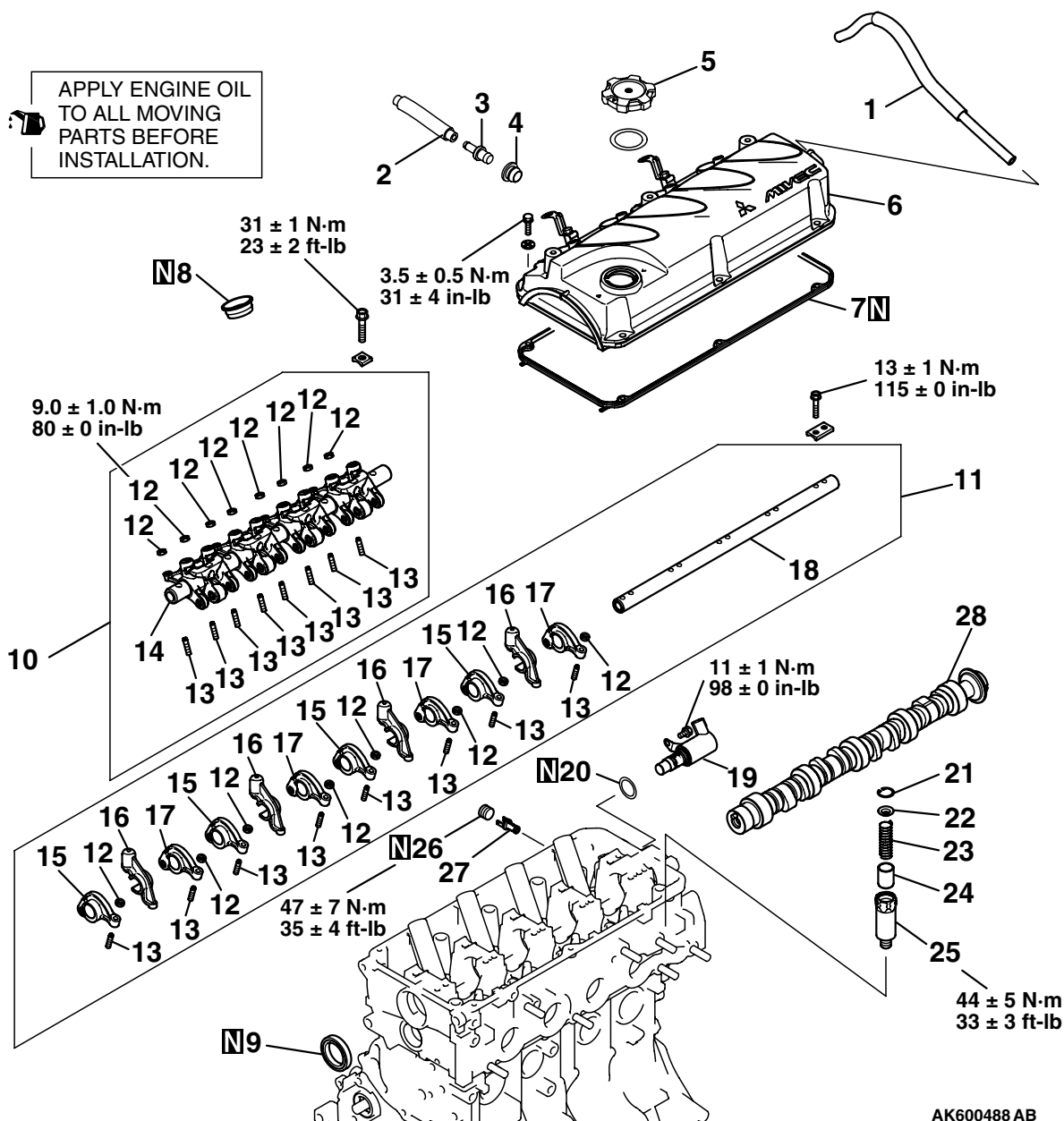
ROCKER ARMS AND CAMSHAFT

REMOVAL AND INSTALLATION

M1113005401403

CAUTION

Much higher accuracy is required in the rocker arm installation (at the intake side). Therefore, mistakes in the rocker arm installation procedure might cause the operation failure. At the overhaul, surely tag the set of Rocker arm "A," T-lever and Rocker arm "B" and then remove the set. At the assembly, install Rocker arm "A," T-lever and Rocker arm "B" to Rocker shaft in accordance with the tag made during removal.



AK600488 AB

REMOVAL STEPS

1. BREATHER HOSE
2. POSITIVE CRANKCASE VENTILATION HOSE
3. POSITIVE CRANKCASE VENTILATION VALVE
4. POSITIVE CRANKCASE VENTILATION VALVE GASKET
5. OIL FILLER CAP
6. ROCKER COVER
7. ROCKER COVER GASKET
8. OIL SEAL
- >>D<< 9. OIL SEAL
- <<A>> >>C<< 10.ROCKER ARMS AND ROCKER ARM SHAFT (INTAKE SIDE)
- <<A>> >>C<< 11.ROCKER ARMS AND ROCKER ARM SHAFT (EXHAUST SIDE)
- 12.NUT
- >>B<< 13.ADJUSTING SCREW

REMOVAL STEPS (Continued)

- 14.ROCKER ARM SHAFT (INTAKE SIDE)
- 15.ROCKER ARM "C"
- 16.PISTON ARM ASSEMBLY
- 17.ROCKER ARM "D"
- 18.ROCKER ARM SHAFT (EXHAUST SIDE)
- >>A<< 19.ENGINE OIL FEEDER CONTROL VALVE
- >>A<< 20.O-RING
- 21.SNAP RING
- 22.ACCUMULATOR SPRING SEAT
- 23.PLUNGER SPRING
- 24.ACCUMULATOR PLUNGER
- 25.ACCUMULATOR BODY
- 26.TAPER PLUG
- 27.ENGINE OIL FEEDER CONTROL VALVE FILTER
- 28.CAMSHAFT

Required Special Tools:

- MD998713: Camshaft Oil Seal Installer

NOTE: A point of installation and removal, the following service procedure is available. The others are the same as 4G69-MIVEC engine described in GALANT Service Manual.

FASTENER TIGHTENING SPECIFICATIONS

M1113023401744

ITEM	SPECIFICATION
Rocker arms and camshaft	
Accumulator body bolt	44 ± 5 N·m (33 ± 3 ft-lb)
Engine oil control valve bolt	11 ± 1 N·m (98 ± 8 ft-lb)
Positive crankcase ventilation valve	10 ± 2 N·m (89 ± 17 in-lb)
Rocker arms and rocker arm shaft bolt <exhaust side>	13 ± 1 N·m (115 ± 8 in-lb)
Rocker arms and rocker arm shaft bolt <intake side>	31 ± 3 N·m (23 ± 2 ft-lb)
Rocker cover bolt	3.5 ± 0.5 N·m (31 ± 4 in-lb)
Taper plug	47 ± 7 N·m (35 ± 4 ft-lb)