

GROUP 00

GENERAL

CONTENTS

HOW TO USE THIS MANUAL.....	00-2	GENERAL DATA AND SPECIFICATIONS	
		00-5
VEHICLE IDENTIFICATION	00-2		
VEHICLE IDENTIFICATION NUMBER LOCATION		MAINTENANCE SCHEDULE.....	00-5
.....	00-2		
VEHICLE INFORMATION CODE PLATE..	00-3		

HOW TO USE THIS MANUAL

M1001000101339

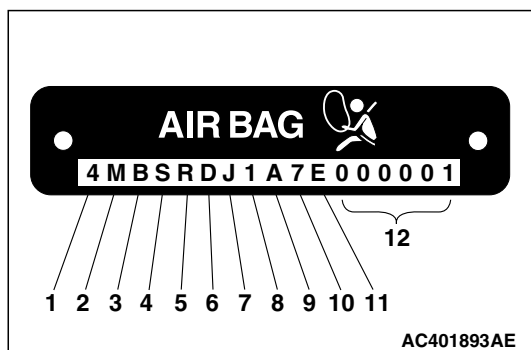
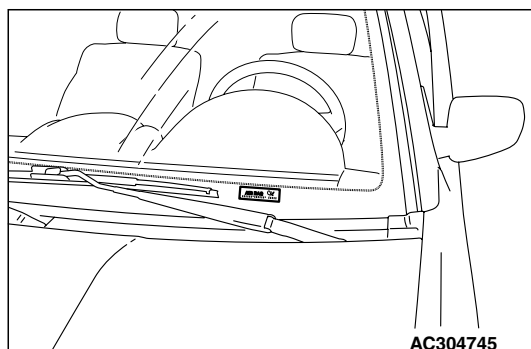
As for the contents except descriptions in this manual, refer to 2007 GALANT Service Manual (Pub. No. MSSP-009B-2007).

VEHICLE IDENTIFICATION

VEHICLE IDENTIFICATION NUMBER LOCATION

M1001000401716

The vehicle identification number (VIN) is located on a plate attached to the left top side of the instrument panel.



VEHICLE IDENTIFICATION CODE CHART PLATE

Vehicle identification numbers contain 17 digits. The vehicle number is a code which tells country, make, vehicle type, etc.

NO.	ITEM	CONTENT	
1	Country	4	USA
2	Make	M	MINISUBISHI
3	Destination	B	General export
4	Body	S	4-door sedan
5	Transaxle	R	4A/T
6	Model Code	D	DJ1A
7		J	
8		1	
9		A	
10	Model year	7	2007 year
11	Plant	E	Mitsubishi Motors North America, Inc.
12	Serial number	000001 to 999999	

NOTE: *: Check digit means a single number, or letter X, used to verify the accuracy of transcription of vehicle identification number.

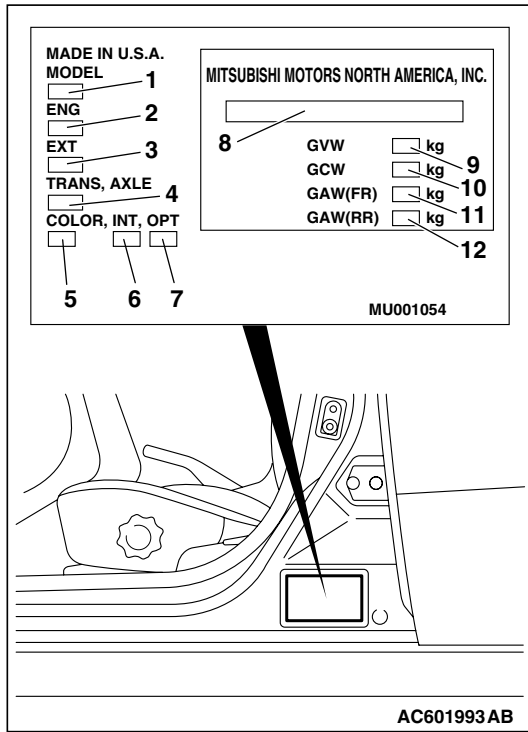
VEHICLE IDENTIFICATION NUMBER LIST

VIN (EXCEPT SEQUENCE NUMBER)	BRAND	ENGINE DISPLACEMENT	MODEL CODE
4MBSRDJ1A7E	mitsubishi galant	2.4L	DJ1ASRHYLFZ
			DJ1ASRXYLEFZ

VEHICLE INFORMATION CODE PLATE

M1001005401119

The vehicle information code plate is riveted to the face of the driver's door sill.



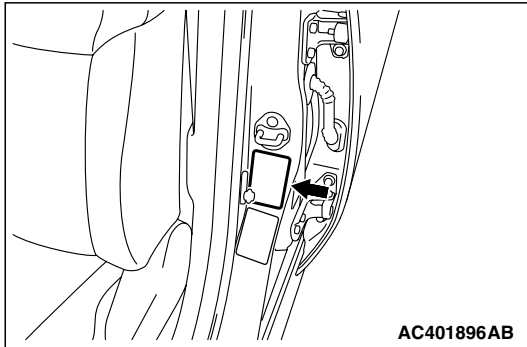
No.	Item	Content	
1	MODEL	DJ1A	Model code
2	ENGINE	4G69	Engine model
3	EXT	P05C	Exterior code
4	TRANS AXLE	F4A4B	Transaxle model
5	COLOR	P05	Body color code
6	INT	39X	Interior code
7	OPT	Z02	Option code
8	VIN	4MBSRDJ18 7E900665	VIN code
9	GVW	1975 kg	Gross vehicle weight

No.	Item	Content	
10	GCW	1560 kg	Gross curb weight
11	GAW (FR)	1045 kg	Gross axle weight rating (Front)
12	GAW (RR)	950 kg	Gross axle weight rating (Rear)

- The plate shows model code, seating capacity, engine displacement, gross vehicle weight and body color code.
- For monotone color vehicles, the body color code shall be indicated. For two-tone or three-tone vehicles, each color code only shall be indicated in series.

TIRE AND LOADING INFORMATION PLACARD

The tire and loading information placard is located on the inside sill of the driver's door.

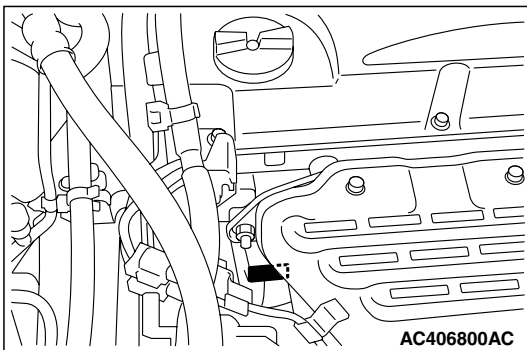


ENGINE MODEL STAMPING

The engine model is stamped on the cylinder block. This engine model numbers are shown as follows.

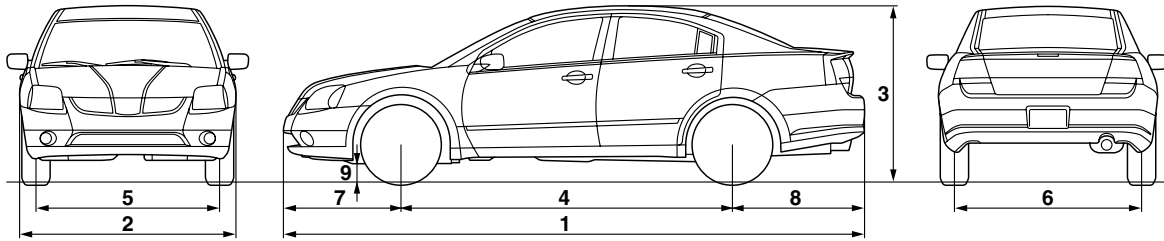
Engine model	Engine displacement
4G69	2.4 L

The engine serial number is stamped near the engine model number.



GENERAL DATA AND SPECIFICATIONS

M1001000901410



AC305137

Items			DJ1A	
			SRHYLFZ	SRXYLFZ
Vehicle dimension mm (in)	Overall length	1	4,840 (190.6)	
	Overall width	2	1,840 (72.4)	
	Overall height (unladen)	3	1,470 (57.9)	
	Wheelbase	4	2,750 (108.3)	
	Tread-front	5	1,570 (61.8)	
	Tread-rear	6	1,570 (61.8)	
	Overhang-front	7	1,000 (39.4)	
	Overhang-rear	8	1,115 (43.9)	
	Ground clearance	9	165 (6.5)	
Vehicle weight kg (lb)	Curb weight		1,560 (3,439)	1,585 (3,494)
	Gross vehicle weight rating		1,985 (4,376)	
	Gross axle weight rating-front		1,050 (2,315)	
	Gross axle weight rating-rear		955 (2,105)	
Seating capacity			5	
Engine	Model No.		4G69	
	Piston displacement L		2.4	
	Maximum output kW (HP)/r/min		116 (155)/5,500	
	Maximum torque N·m (ft·lb)/r/min		213 (157)/4,000	
Transaxle	Model No.		F4A4B	
	Type		4-speed automatic	
Fuel system	Fuel supply system		MFI	

MAINTENANCE SCHEDULE

M1001015400010

As for the details of maintenance, the Pre-Delivery Inspection and Periodic Maintenance which is made for each destination should be referred.