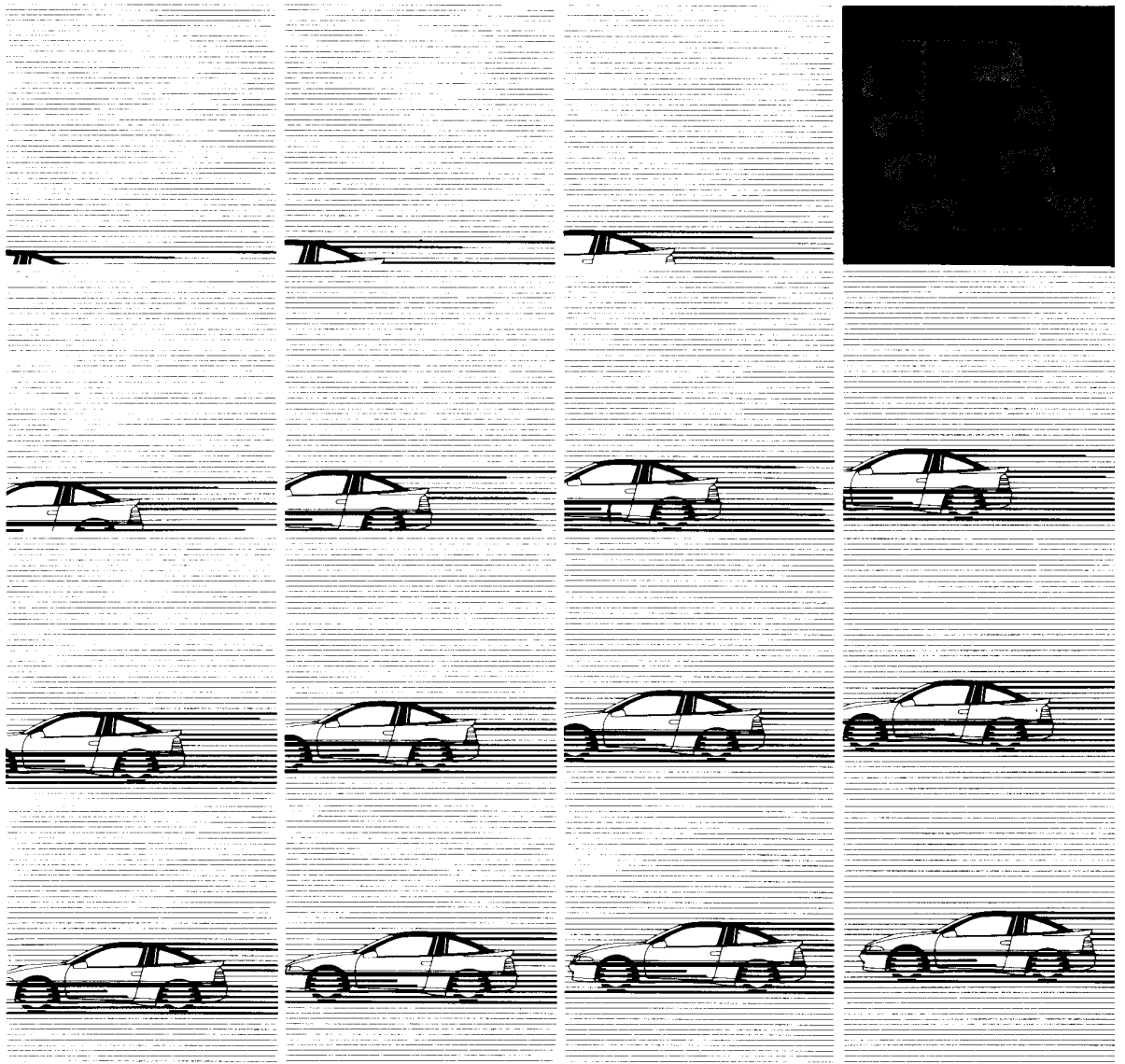




# Body Repair Manual

## ECLIPSE '91



# ECLIPSE

## BODY REPAIR MANUAL

### FOREWORD

This manual has been prepared for the use of all service mechanics engaged in the body repair service of the ECLIPSE.

Body dimensions, welded panel replacement procedures, body sealing application instructions, and all the other information required to provide quick and accurate body repair service are contained herein. One especially important point is the welding method. All of the vehicle's original strength and durability can be maintained by following the welding procedures contained in this manual.

Note that, in order to maximize the efficiency of the repair work, first, both the extent of the damage and the replacement parts that are needed must be calculated accurately, and then the actual work must be performed accurately and efficiently.

The publications shown on the following page are also available, and should be used in conjunction with this manual.

Mitsubishi Motors Corporation reserves the right to make changes in design and specifications and/or to make additions to or improvements in its products without imposing any obligation upon itself to install them on its products previously manufactured.

**GENERAL**

**0**

**BODY CONSTRUCTION**

**1**

**BODY DIMENSIONS**

**2**

**WELDED PANEL  
REPLACEMENT**

**3**

**CORROSION PROTECTION**

**4**

**SYNTHETIC-RESIN PARTS**

**5**

**BODY COLOUR**

**6**

**WIRING AND PIPING DIAGRAM**

**7**

**REFERENCE MATERIAL**

**8**

