

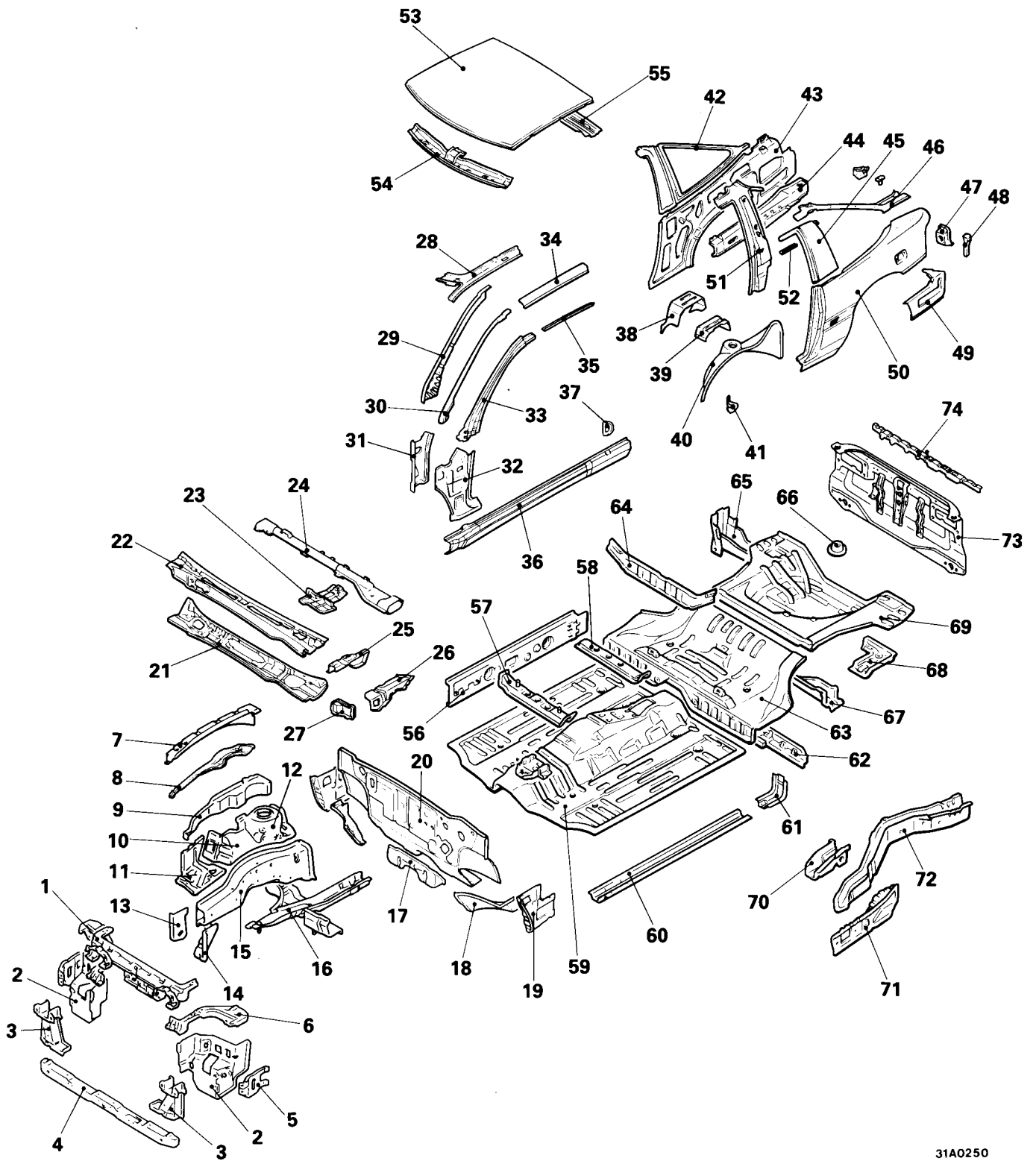
# 1

# BODY CONSTRUCTION

BODY COMPONENTS .....	1- 2
BODY CONSTRUCTION CHARACTERISTICS .....	1- 6
SPECIAL STEEL PANELS .....	1- 6
BODY MAIN CROSS-SECTIONAL VIEWS .....	1-10
MAINTENANCE, SERVICEABILITY .....	1-12
FRONT BODY .....	1-15
SIDE BODY .....	1-21
REAR BODY .....	1-23
UNDERBODY .....	1-24
ROOF .....	1-27
DOOR .....	1-28
SILENCER APPLICATION LOCATIONS .....	1-29

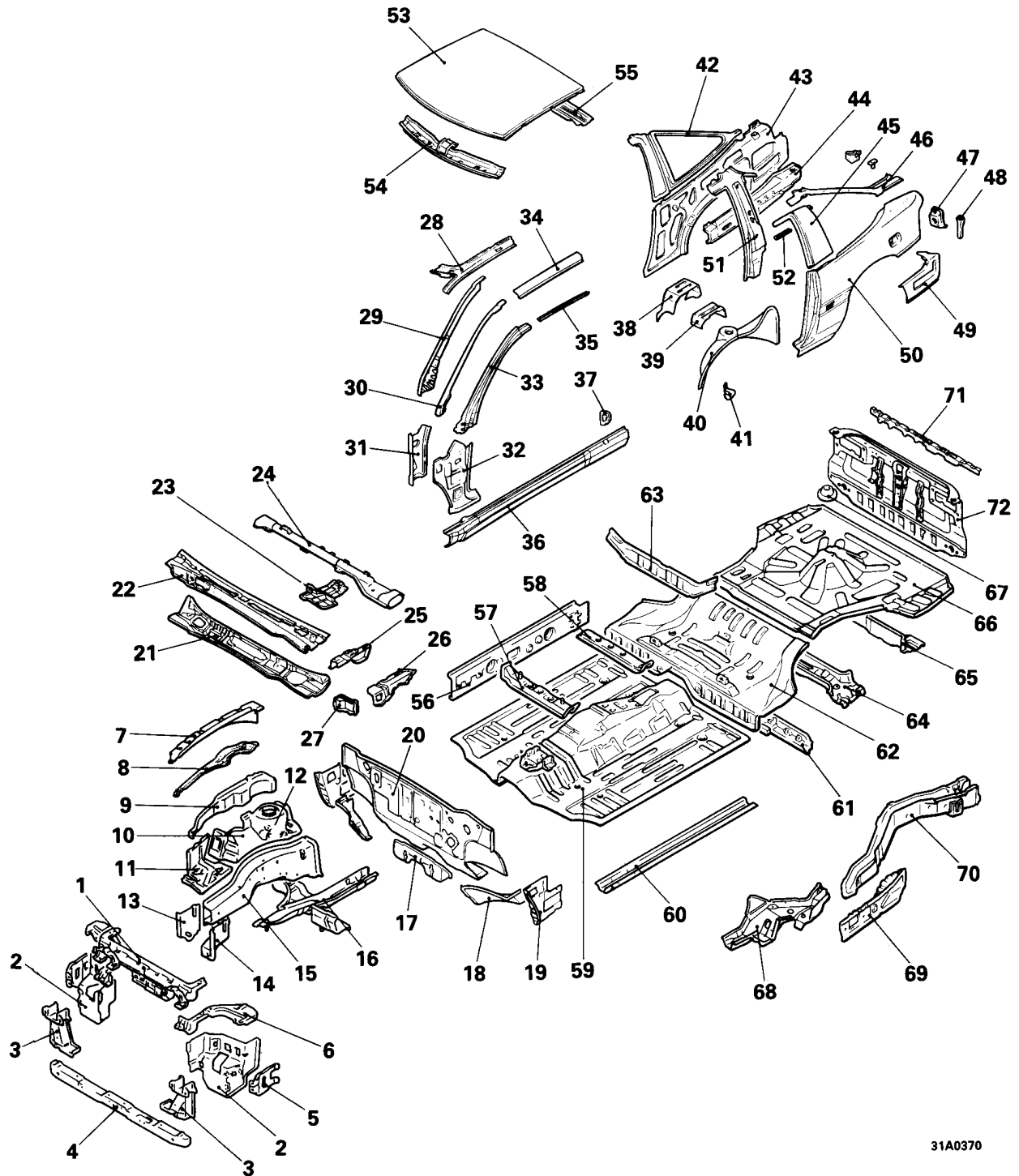
# BODY COMPONENTS

<2WD>



- |  |                                       |
|--|---------------------------------------|
| 1 Front end upper bar                  | 38 Shelf corner bracket               |
| 2 Headlamp support panel               | 39 Seat striker reinforcement         |
| 3 Sidemember to crossmember brace      | 40 Rear wheelhouse, inner             |
| 4 Front end crossmember                | 41 Rear wheelhouse front extension    |
| 5 Fender support panel                 | 42 Quarter panel, inner, upper        |
| 6 Front end upper bar reinforcement    | 43 Quarter panel, inner, lower        |
| 7 Front upper frame, outer             | 44 Beltline reinforcement             |
| 8 Front upper frame, lower             | 45 Center pillar, outer               |
| 9 Front upper frame, inner             | 46 Rear pillar, outer                 |
| 10 Front fender shield                 | 47 Rear lamp housing                  |
| 11 Shield plate                        | 48 Rear lamp housing extension        |
| 12 Strut house panel                   | 49 Quarter outer lower extension      |
| 13 Front tie down bracket, outer       | 50 Quarter panel, outer               |
| 14 Front tie down bracket, inner       | 51 Center pillar reinforcement, upper |
| 15 Front sidemember                    | 52 Roof drip channel extension        |
| 16 Front sidemember, rear              | 53 Roof panel                         |
| 17 Dash panel crossmember              | 54 Front roof rail                    |
| 18 Dash panel extension                | 55 Rear roof rail                     |
| 19 Front floor side sill, inner, front | 56 Front floor side sill, inner       |
| 20 Dash panel                          | 57 Front floor crossmember, front     |
| 21 Cowl top panel, inner               | 58 Front floor crossmember, rear      |
| 22 Cowl top panel, outer               | 59 Front floor pan                    |
| 23 Steering column support bracket     | 60 Front floor sidemember             |
| 24 Front deck crossmember              | 61 Front floor sidemember extension   |
| 25 Front upper frame extension, inner  | 62 Rear seat crossmember              |
| 26 Front upper frame extension, outer  | 63 Rear seat pan                      |
| 27 Upper frame extension silencer      | 64 Rear floor crossmember, upper      |
| 28 Roof side rail, inner               | 65 Lateral rod bracket                |
| 29 Front pillar, inner, upper (A)      | 66 Spare tire bracket                 |
| 30 Front pillar, inner, upper (B)      | 67 Rear floor crossmember, lower      |
| 31 Front pillar, inner, lower          | 68 Jack up reinforcement              |
| 32 Front pillar, outer, lower          | 69 Rear floor pan                     |
| 33 Front pillar, outer, upper          | 70 Trailing arm bracket               |
| 34 Roof side rail, outer               | 71 Rear floor side sill               |
| 35 Roof drip channel                   | 72 Rear floor sidemember              |
| 36 Front floor side sill, outer        | 73 Rear end panel                     |
| 37 Side sill silencer                  | 74 Rear fascia bracket, upper         |

&lt;4WD&gt;



31A0370

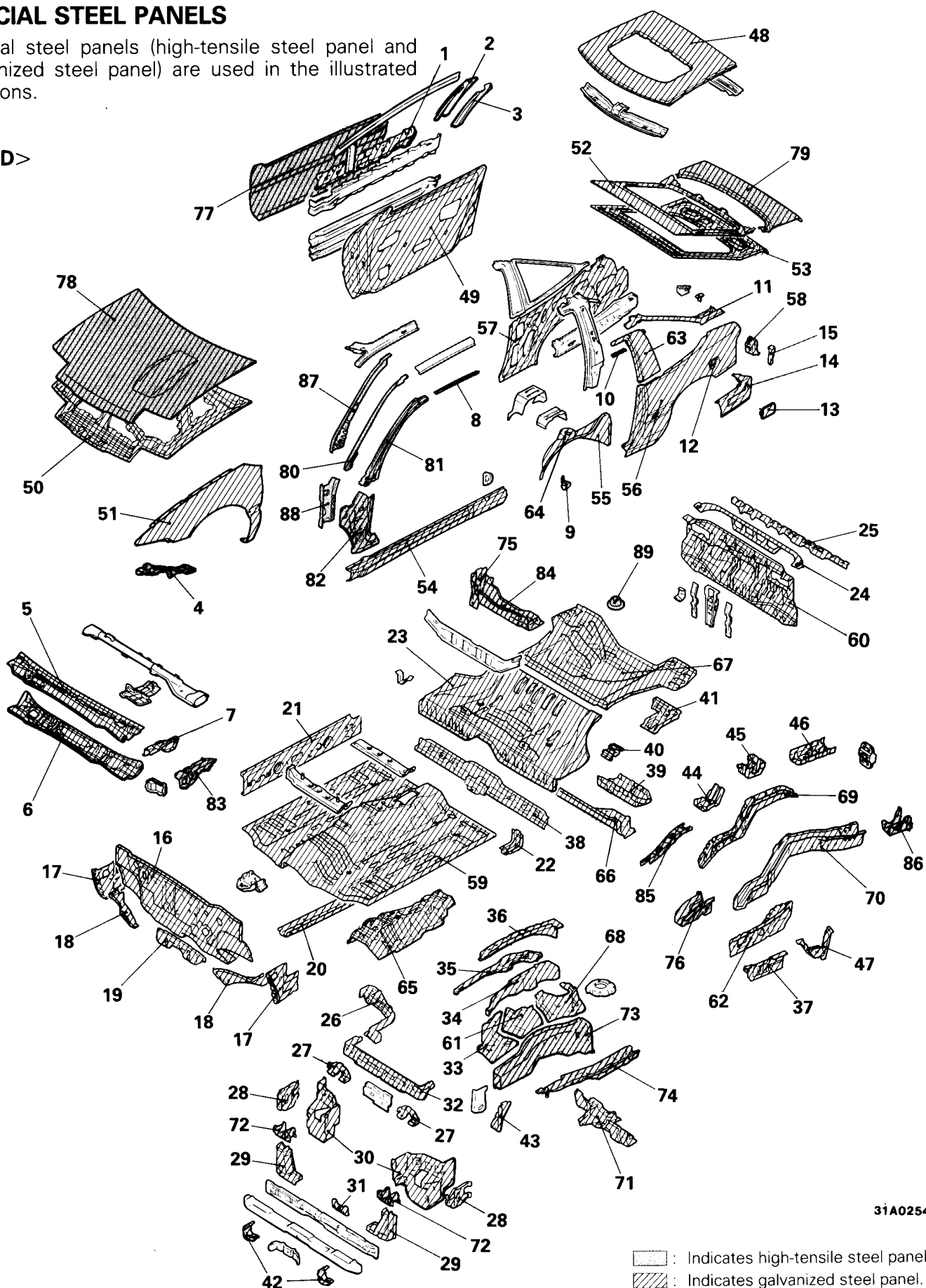
- |  |  |
|--|--|
| 1 Front end upper bar                  | 37 Side sill silencer                    |
| 2 Headlamp support panel               | 38 Shelf corner bracket                  |
| 3 Sidemember to crossmember brace      | 39 Seat striker reinforcement            |
| 4 Front end crossmember                | 40 Rear wheelhouse, inner                |
| 5 Fender support panel                 | 41 Rear wheelhouse front extension       |
| 6 Front end upper bar reinforcement    | 42 Quarter panel, inner, upper           |
| 7 Front upper frame, outer             | 43 Quarter panel, inner, lower           |
| 8 Front upper frame, lower             | 44 Beltline reinforcement                |
| 9 Front upper frame, inner             | 45 Center pillar, outer                  |
| 10 Front fender shield                 | 46 Rear pillar, outer                    |
| 11 Shield plate                        | 47 Rear lamp housing                     |
| 12 Strut house panel                   | 48 Rear lamp housing extension           |
| 13 Front tie down bracket, outer       | 49 Quarter outer lower extension         |
| 14 Front tie down bracket, inner       | 50 Quarter panel, outer                  |
| 15 Front sidemember                    | 51 Center pillar reinforcement, upper    |
| 16 Front sidemember, rear              | 52 Roof drip channel extension           |
| 17 Dash panel crossmember              | 53 Roof panel                            |
| 18 Dash panel extension                | 54 Front roof rail                       |
| 19 Front floor side sill, inner, front | 55 Rear roof rail                        |
| 20 Dash panel                          | 56 Front floor side sill, inner          |
| 21 Cowl top panel, inner               | 57 Front floor crossmember, front        |
| 22 Cowl top panel, outer               | 58 Front floor crossmember, rear         |
| 23 Steering column support bracket     | 59 Front floor pan                       |
| 24 Front deck crossmember              | 60 Front floor sidemember                |
| 25 Front upper frame extension, inner  | 61 Rear seat crossmember                 |
| 26 Front upper frame extension, outer  | 62 Rear seat pan                         |
| 27 Upper frame extension silencer      | 63 Rear floor crossmember, upper         |
| 28 Roof side rail, inner               | 64 Rear floor crossmember, lower         |
| 29 Front pillar, inner, upper (A)      | 65 Rear end crossmember                  |
| 30 Front pillar, inner, upper (B)      | 66 Rear floor pan                        |
| 31 Front pillar, inner, lower          | 67 Spare tire bracket                    |
| 32 Front pillar, outer, lower          | 68 Rear floor sidemember front extension |
| 33 Front pillar, outer, upper          | 69 Rear floor side sill                  |
| 34 Roof side rail, outer               | 70 Rear floor sidemember                 |
| 35 Roof drip channel                   | 71 Rear fascia bracket, upper            |
| 36 Front floor side sill, outer        | 72 Rear end panel                        |

## BODY CONSTRUCTION CHARACTERISTICS

### SPECIAL STEEL PANELS

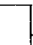
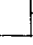
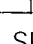
Special steel panels (high-tensile steel panel and galvanized steel panel) are used in the illustrated positions.

<2WD>

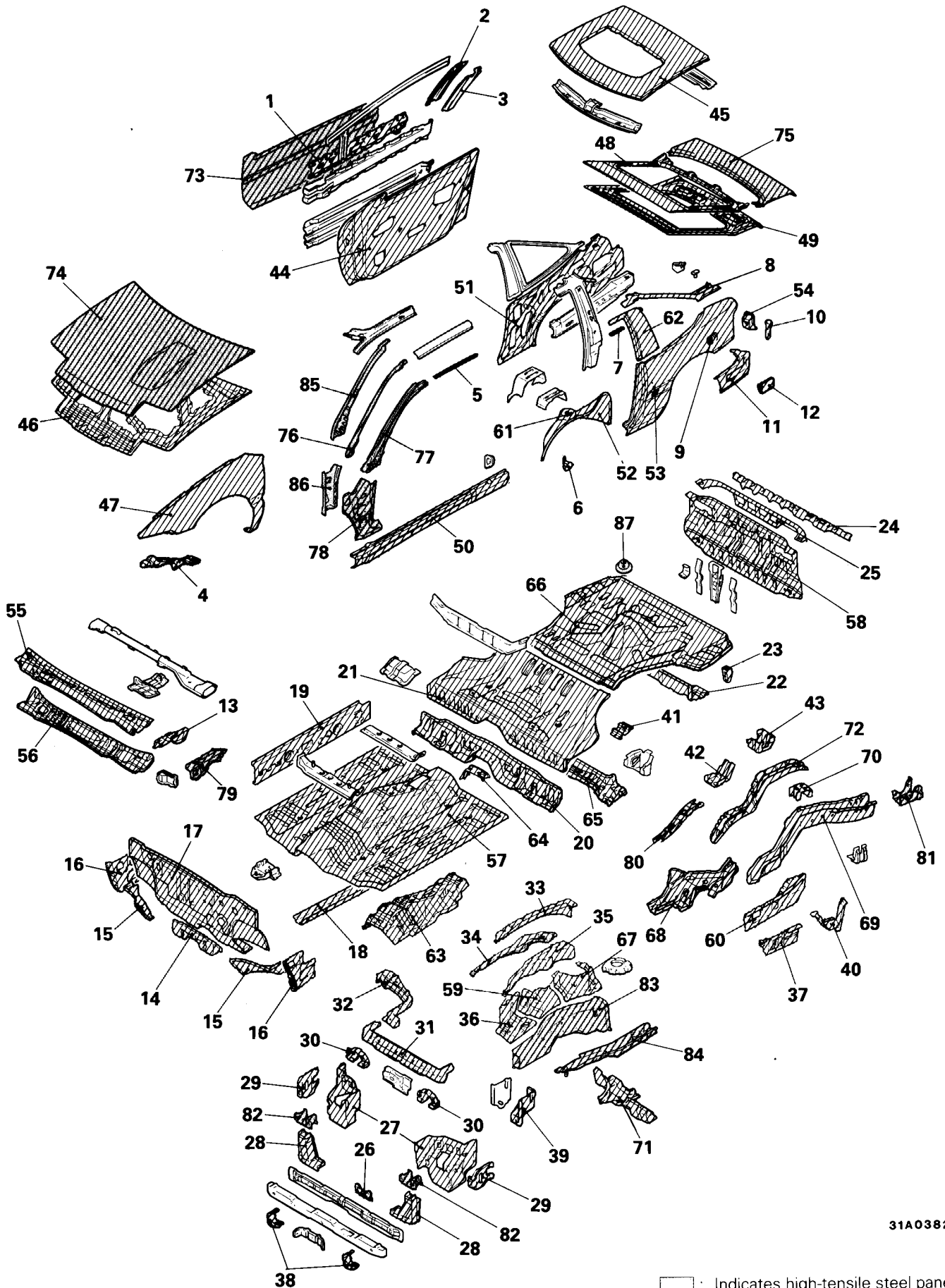


31A0254

No.	Part name	Material	No.	Part name	Material
1	Front door beltline reinforcement, outer	SGACC	48	Roof panel (for sun roof)	SGACE
2	Front door, outer, rear		49	Front door inner panel	
3	Front door, inner, rear		50	Hood panel, inner	
4	Front fender bracket		51	Front fender panel	
5	Cowl top panel, outer		52	Tailgate panel, outer, upper	
6	Cowl top panel, inner		53	Tailgate panel, inner	
7	Front upper extension, inner		54	Front floor side sill, outer	
8	Roof drip channel		55	Rear wheelhouse, inner	
9	Rear wheelhouse front extension		56	Quarter panel, outer	
10	Roof drip channel extension		57	Quarter panel, inner, lower	
11	Rear pillar, outer		58	Rear lamp housing	
12	Fuel filler neck bracket		59	Front floor pan	
13	Fuel filler door panel		60	Rear end panel, inner	SENCE
14	Quarter outer lower extension		61	Front fender shield	
15	Rear lamp housing extension		62	Rear floor side sill	
16	Dash panel		63	Center pillar, outer	
17	Front floor side sill, inner, front		64	Spring house panel	
18	Dash panel extension		65	Backbone rear reinforcement	
19	Dash panel crossmember		66	Rear floor crossmember, lower	
20	Front floor sidemember		67	Rear floor pan	
21	Front floor side sill, inner		68	Strut house panel	
22	Front floor sidemember extension		69	Rear floor sidemember reinforcement	
23	Rear seat pan		70	Rear floor sidemember	
24	Rear end panel, outer		71	Front sidemember, rear	SENHC
25	Rear fascia upper bracket		72	Bumper bracket	SENC35R
26	Front end upper bar reinforcement		73	Front sidemember, inner	
27	Turn lamp bracket		74	Front sidemember rear reinforcement	
28	Fender support plate		75	Lateral rod bracket	SENP38
29	Sidemember to crossmember brace		76	Trailing arm bracket	
30	Headlamp support panel		77	Front door panel, outer	SGAC35R
31	Oil cooler bracket		78	Hood panel, outer	
32	Front end upper bar		79	Tailgate panel, outer, lower	
33	Shield plate		80	Front pillar, inner, upper (B)	
34	Front upper frame, inner		81	Front pillar, outer, upper	
35	Front upper frame, lower		82	Front pillar, outer, lower	
36	Front upper frame, outer		83	Front upper frame extension, outer	
37	Rear floor side sill reinforcement		84	Lateral rod reinforcement	
38	Rear seat crossmember	SGAHC	85	Sidemember seat belt reinforcement	SPRC35
39	Rear floor crossmember reinforcement		86	Rear floor sidemember extension	
40	Rear floor seat belt reinforcement		87	Front pillar, inner, upper (A)	
41	Jack up reinforcement		88	Front pillar, inner, lower	
42	Radiator bracket		89	Spare tire bracket	
43	Front tie down bracket, inner				
44	Rear floor sidemember front bulkhead				
45	Rear floor sidemember rear bulkhead				
46	Rear floor sidemember center reinforcement				
47	Rear tie down reinforcement				

\* SGACC  Galvannealed steel plate  
 SGACE   
 SGAHC   
 SENHC: SPHC plated with an electrical zinc-nickel alloy  
 SENCE: SPCE plated with an electrical zinc-nickel alloy  
 SPRC: Phosphorus added  
 SENC35R: SPRC35 plated with an electrical zinc-nickel alloy  
 SGAC35R: Galvannealed SPRC35  
 SENPH: SAPH plated with an electrical zinc-nickel alloy  
 The numbers in the material codes indicate the tensile strength.

&lt;4WD&gt;



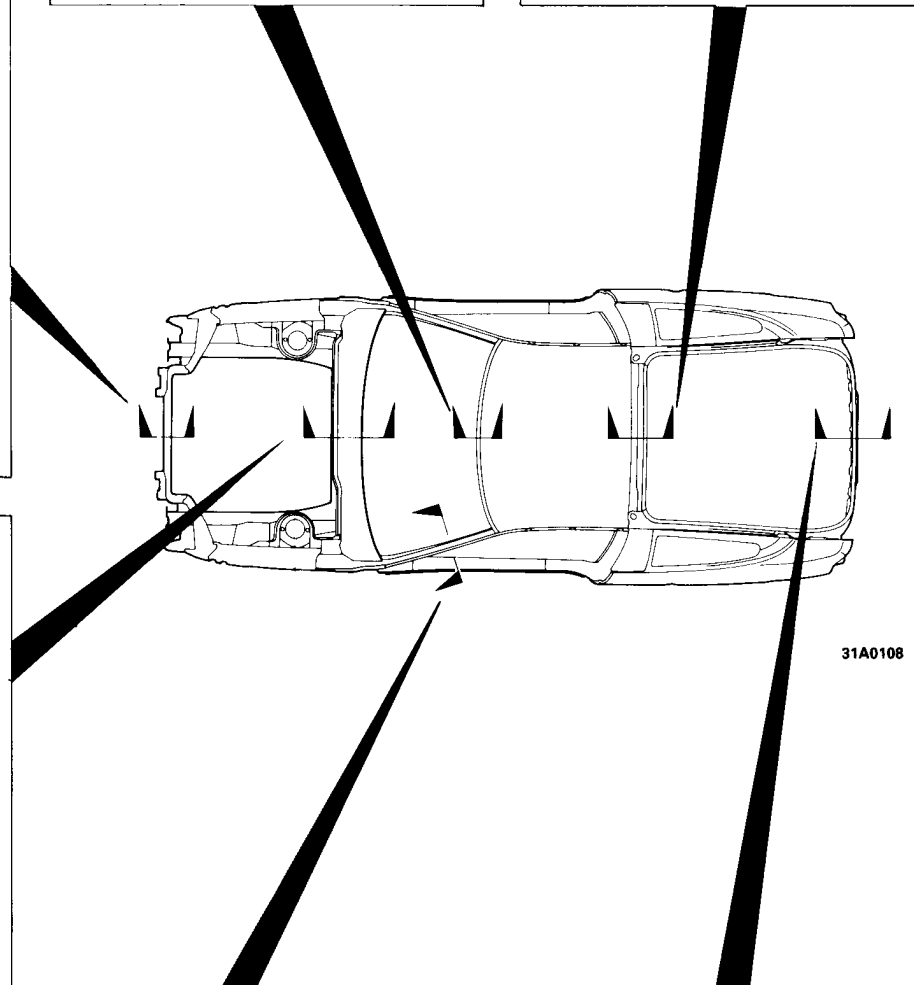
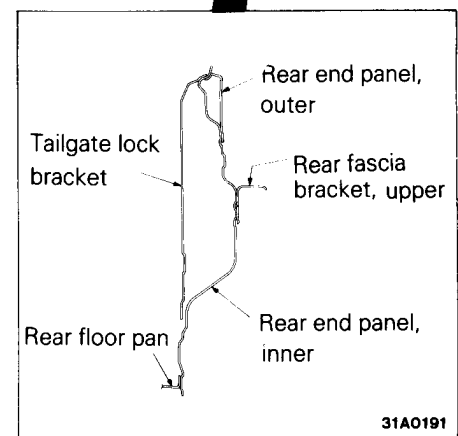
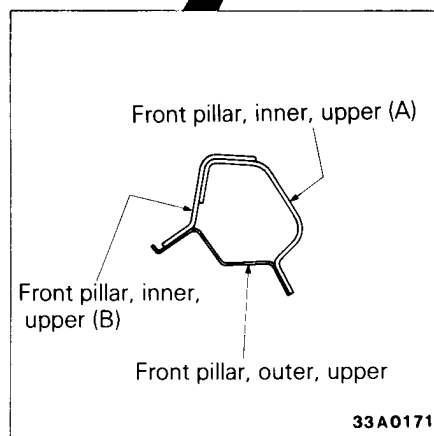
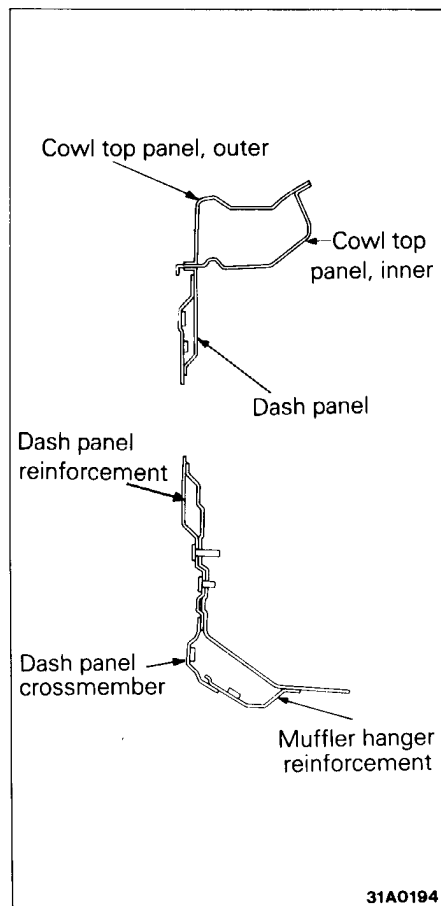
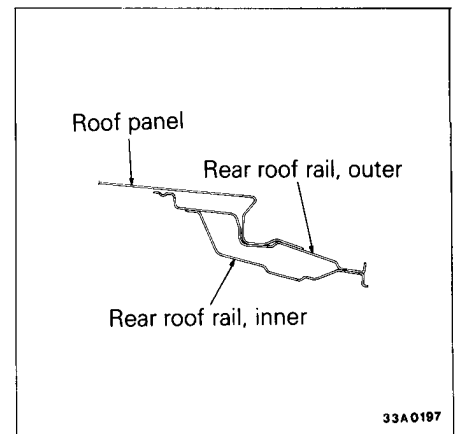
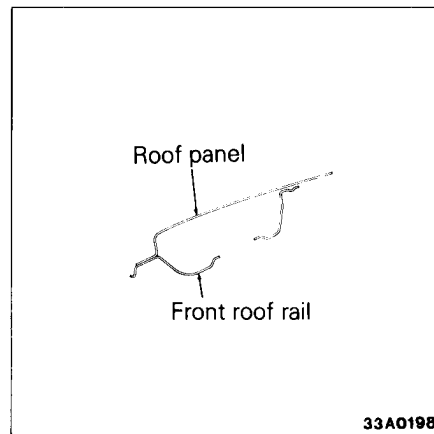
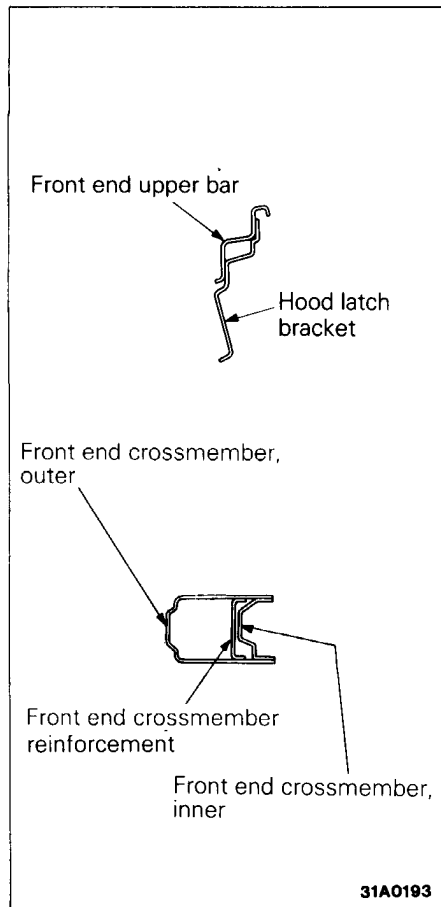
31A0382

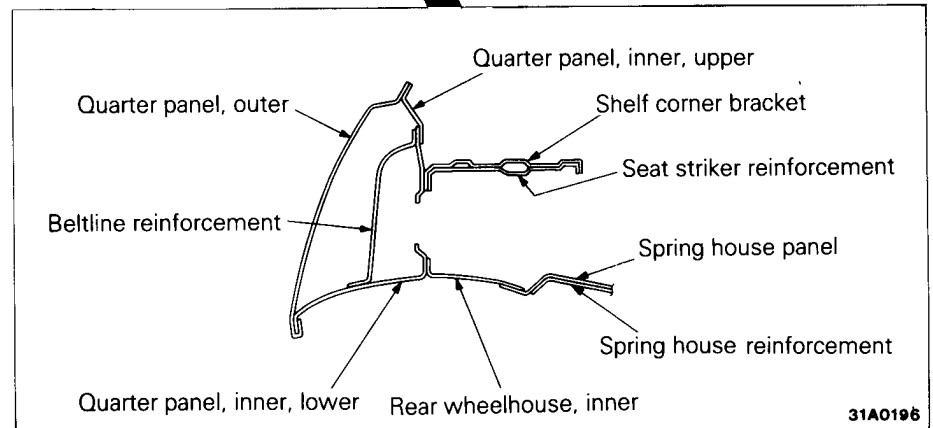
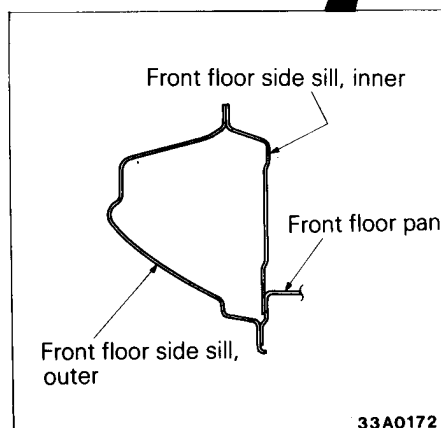
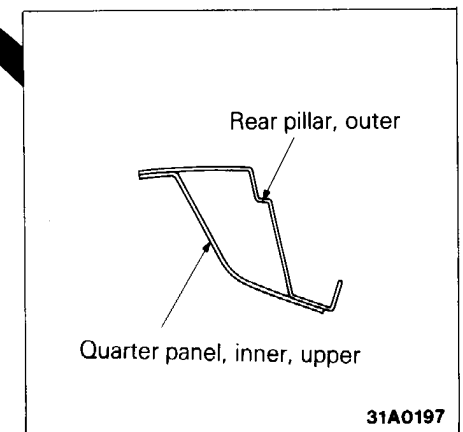
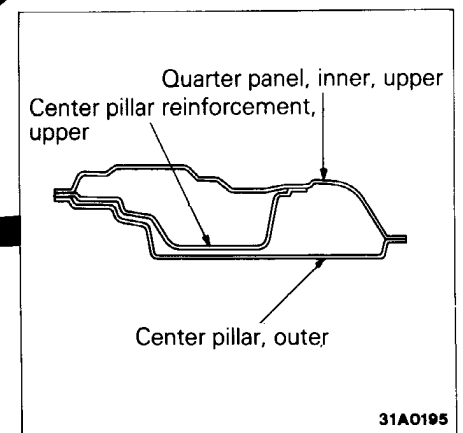
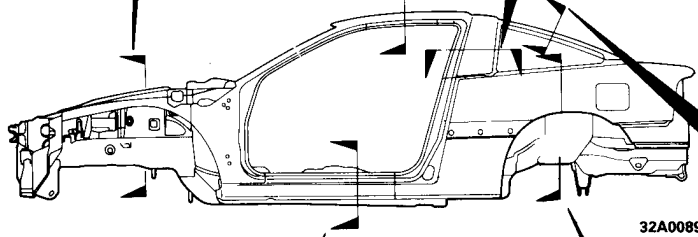
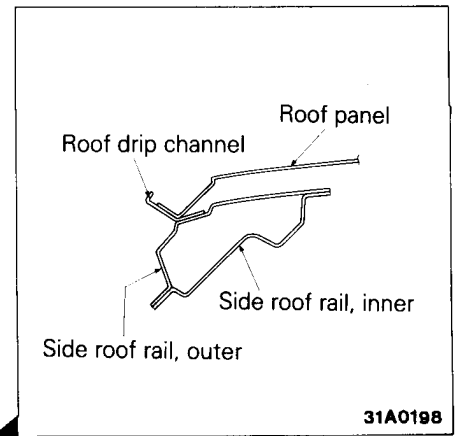
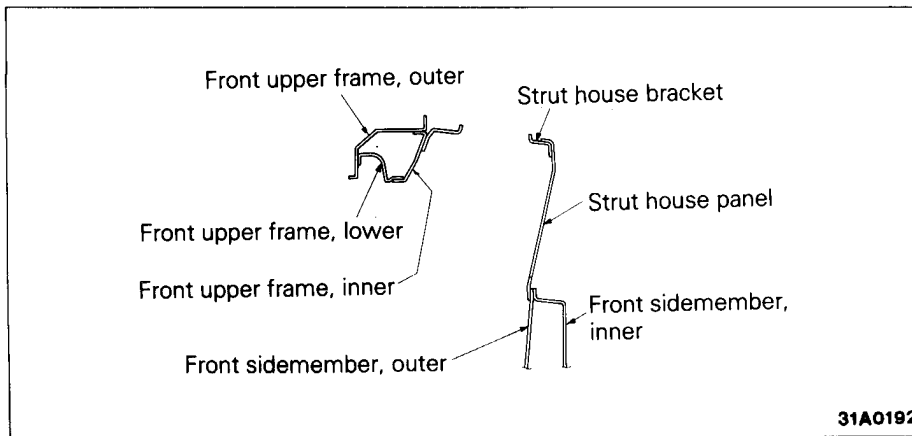


No.	Part name	Material	No.	Part name	Material
1	Front door beltline reinforcement, outer	SGACC	44	Front door panel, inner	SGACE
2	Front door, outer, rear		45	Roof panel (for sun roof)	
3	Front door, inner, rear		46	Hood panel, inner	
4	Front fender bracket		47	Front fender panel	
5	Roof drip channel		48	Tailgate panel, outer, upper	
6	Rear wheelhouse front extension		49	Tailgate panel, inner	
7	Roof drip channel extension		50	Front floor side sill, outer	
8	Rear pillar, outer		51	Quarter panel, inner, lower	
9	Fuel filler neck bracket		52	Rear wheelhouse, inner	
10	Rear lamp housing extension		53	Quarter panel, outer	
11	Quarter outer lower extension		54	Rear lamp housing	
12	Fuel filler door panel		55	Cowl top panel, outer	
13	Front upper frame extension, inner		56	Cowl top panel, inner	
14	Dash panel crossmember		57	Front floor pan	
15	Dash panel extension		58	Rear end panel, inner	
16	Front floor side sill, inner, front		59	Front fender shield	
17	Dash panel		60	Rear floor side sill	
18	Front floor sidemember		61	Spring house panel	SENCE
19	Front floor side sill, inner		62	Center pillar, outer	
20	Rear seat crossmember		63	Backbone rear reinforcement	
21	Rear seat pan		64	Propeller shaft rear bracket	
22	Rear end crossmember		65	Rear floor crossmember, lower	
23	Child restraint reinforcement		66	Rear floor pan	
24	Rear fascia upper bracket		67	Strut house panel	
25	Rear end panel, outer		68	Rear floor sidemember front extension	
26	Oil cooler bracket		69	Rear floor sidemember	
27	Headlamp support panel		70	Differential mount bulkhead	
28	Sidemember to crossmember brace		71	Front sidemember, rear	SENHC
29	Fender support plate		72	Rear floor sidemember reinforcement	SENHE
30	Turn lamp bracket		73	Front door panel, outer	SGAC35R
31	Front end upper bar		74	Hood panel, outer	
32	Front end upper bar reinforcement		75	Tailgate panel, outer, lower	
33	Front upper frame, outer		76	Front pillar, inner, upper (B)	
34	Front upper frame, lower		77	Front pillar, outer, upper	
35	Front upper frame, inner		78	Front pillar, outer, lower	
36	Shield plate	SGAHC	79	Front upper frame extension, outer	SENC35R
37	Rear floor side sill reinforcement		80	Sidemember seat belt reinforcement	
38	Radiator bracket		81	Rear floor sidemember extension	
39	Front tie down bracket, inner		82	Bumper bracket	
40	Rear tie down reinforcement		83	Front sidemember, inner	SPRC35
41	Rear floor seat belt reinforcement		84	Front sidemember rear reinforcement	
42	Rear floor sidemember front bulkhead		85	Front pillar, inner, upper (A)	SPRC35
43	Rear floor sidemember rear bulkhead		86	Front pillar, inner, lower	
			87	Spare tire bracket	

\* SGACC — Galvannealed steel plate  
 SGACE —  
 SGAHC —  
 SENHC — SPHC plated with an electrical zinc-nickel alloy  
 SENHE —  
 SENCE: SPCE plated with an electrical zinc-nickel alloy  
 SPRC: Phosphorus added  
 SENC35R: SPRC35 plated with an electrical zinc-nickel alloy  
 SGAC35R: Galvannealed SPRC35  
 The numbers in the material codes indicate the tensile strength.

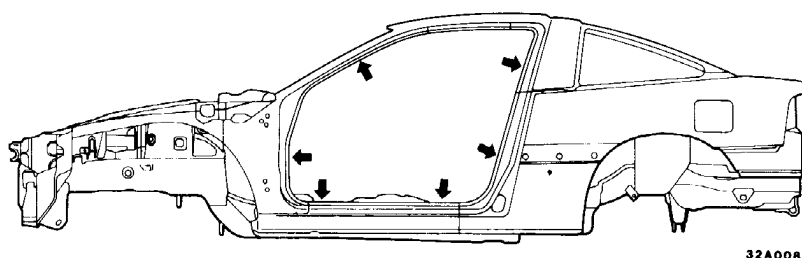
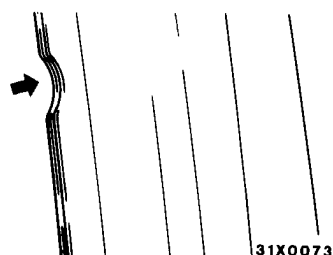
## BODY MAIN CROSS-SECTIONAL VIEWS



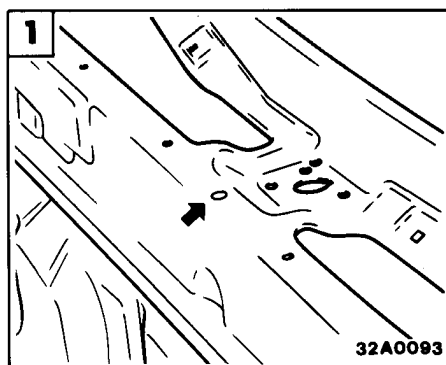
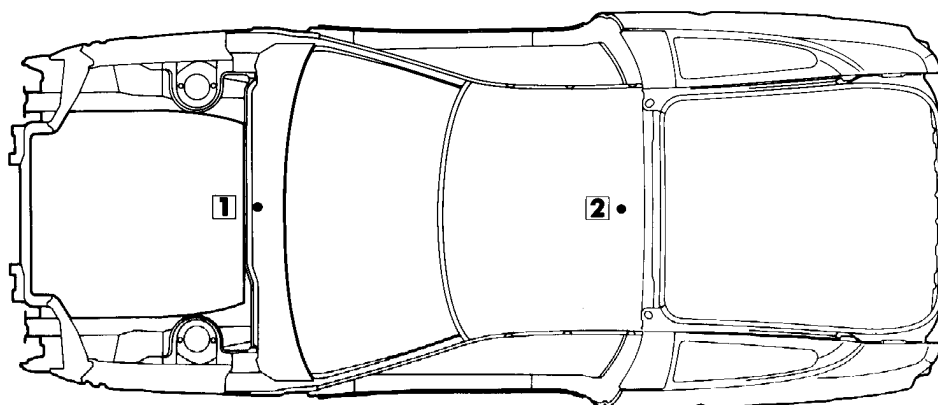


**MAINTENANCE, SERVICEABILITY****Side Structure**

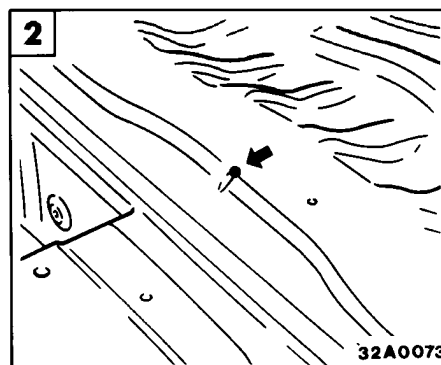
Notches are provided in the door openings for use in aligning panel positions, thus facilitating the assembly of new parts.

**Body Centre Points**

Body centre points are provided at the following locations, which serve as reference points for measurements at replacement of panels. (Refer to "Body Dimensions")



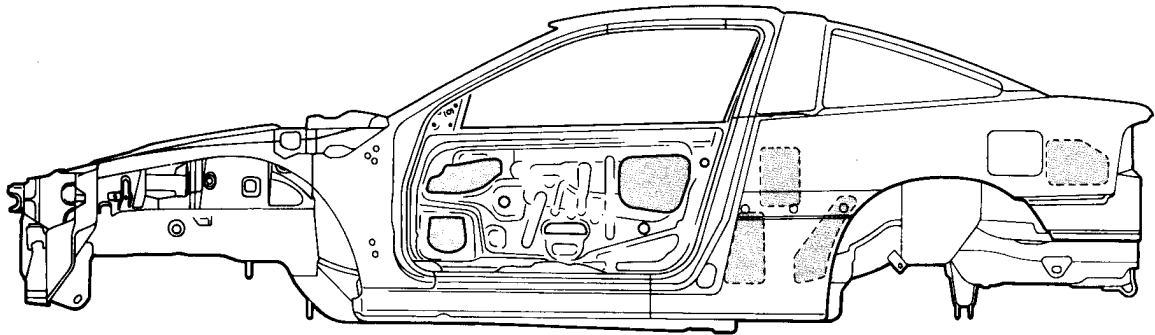
Front body centre point reference location



Rear body centre point reference location

### Access Holes

Access holes are provided in inner panels including doors and quarter panels to facilitate correction of outer panel sheet metals.



■ : Access holes

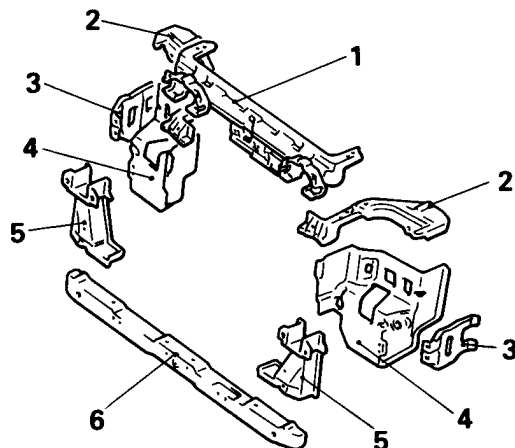
32A0119

### Headlamp Support

The following component supply formats have been adopted in order to cope with various damage conditions.

- Supply as assembly  
Headlamp support  
1+2+3+4+5+6
- Supply as individual parts  
1, 2, 3, 4, 5

1. Front end upper bar
2. Front end upper bar reinforcement
3. Fender support plate
4. Headlamp support side panel
5. Sidemember to crossmember brace
6. Front end crossmember



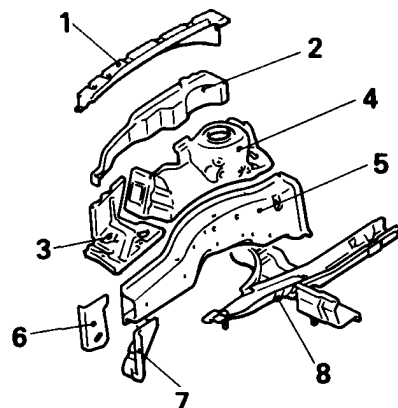
31A0244

### Fender Shield

The following component supply formats have been adopted in order to cope with various damage conditions.

- Supply as assembly  
Fender shield  
1+2+3+4+5+6+7  
Wheelhouse, inner  
1+2+3+4
- Supply as individual parts  
1, 2, 3, 6, 7, 8

1. Front upper frame, outer
2. Front upper frame, inner
3. Shield plate
4. Front wheelhouse
5. Front sidemember
6. Front end gusset, outer
7. Front end gusset, inner
8. Front sidemember, rear



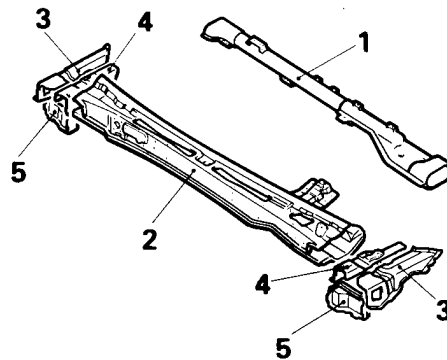
31A0243

**Front Deck**

The part coupling with the fender shield is supplied as an individual part for efficient part replacement.

- Supply as assembly  
Cowl top panel  
2+3+4+5
- Supply as individual parts  
1, 3, 4, 5

1. Front deck crossmember
2. Cowl top
3. Upper frame extension, outer
4. Upper frame extension, inner
5. Upper frame silencer



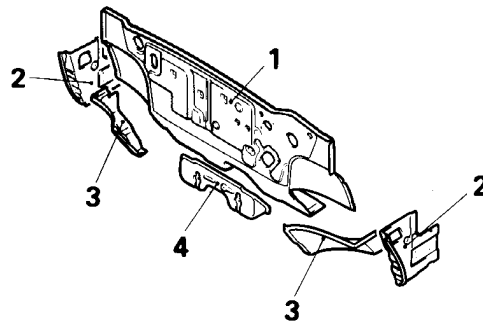
31A0239

**Dash Panel**

The dash panel extension is supplied as an individual part in order to cope with a side collision to the front pillar.

- Supply as assembly  
Dash panel  
1+2+3+4
- Supply as individual parts  
2, 3, 4

1. Dash panel
2. Front floor side sill, inner, front
3. Dash panel extension
4. Dash panel crossmember



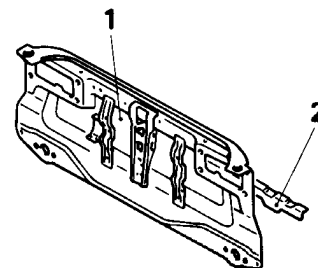
31A0240

**Rear End Panel**

The rear fascia upper bracket is supplied as an individual part in order to cope with a minor collision.

- Supply as assembly  
Rear end panel  
1+2
- Supply as individual parts  
2

1. Rear end panel
2. Rear fascia bracket, upper



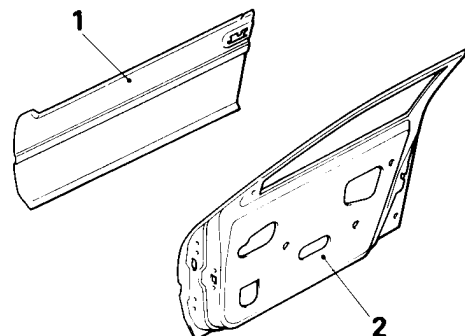
31A0241

**Front Door**

For the door, the outer panel is supplied as an individual part for efficient part replacement.

- Supply as assembly  
Front door-panel  
1+2
- Supply as individual parts  
1

1. Front door panel, outer
2. Front door panel, inner



31A0242

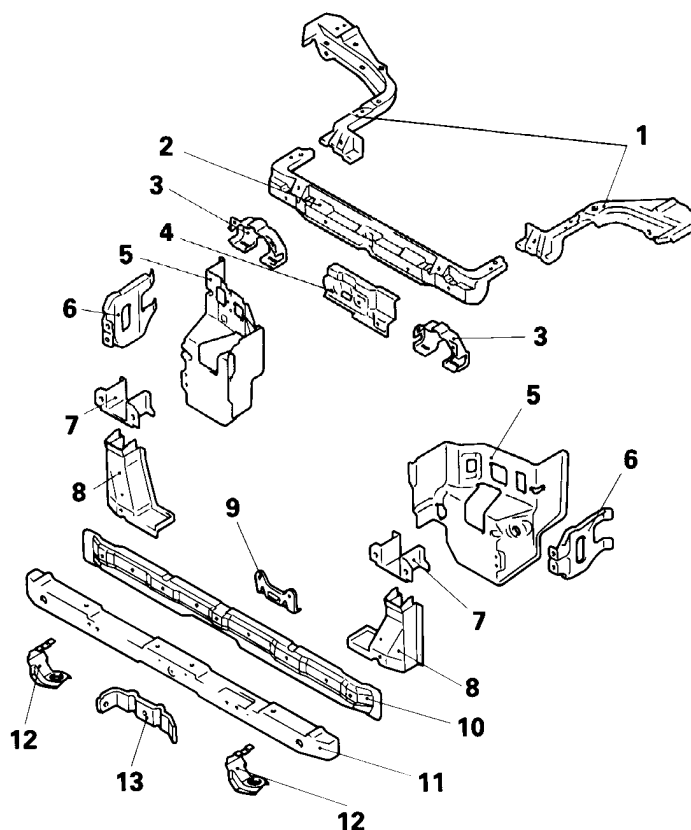
# **FRONT BODY**

## **Headlamp support**

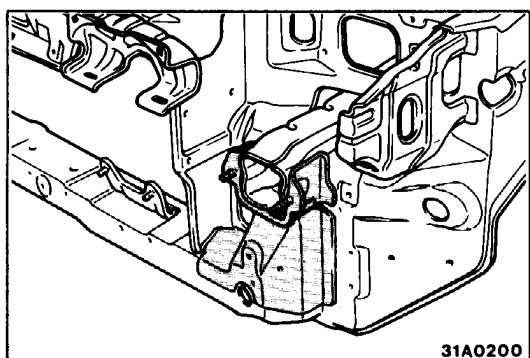
(1) For the headlamp support, the same basic separation construction is used as for previous models; it has the following features.

- The front end upper bar separates into three pieces to facilitate left and right replacement.
- A fender support plate has been provided for fender panel installation.

1. Front end upper bar reinforcement
2. Front end upper bar
3. Turn lamp bracket
4. Hood latch bracket
5. Headlamp support panel
6. Fender support plate
7. Bumper bracket
8. Sidemember to crossmember brace
9. Oil cooler bracket
10. Front end crossmember, inner
11. Front end crossmember, outer
12. Radiator bracket
13. Front end crossmember reinforcement  
<2WD only>

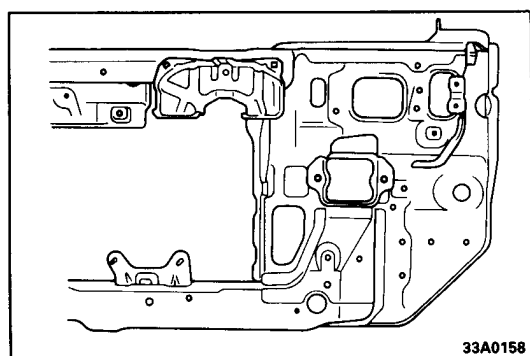


31A0228



31A0200

(2) The bumper bracket is coupled with the sidemember and crossmember brace, as well as the front sidemember in order to provide the front bumper installation part with sufficient strength.

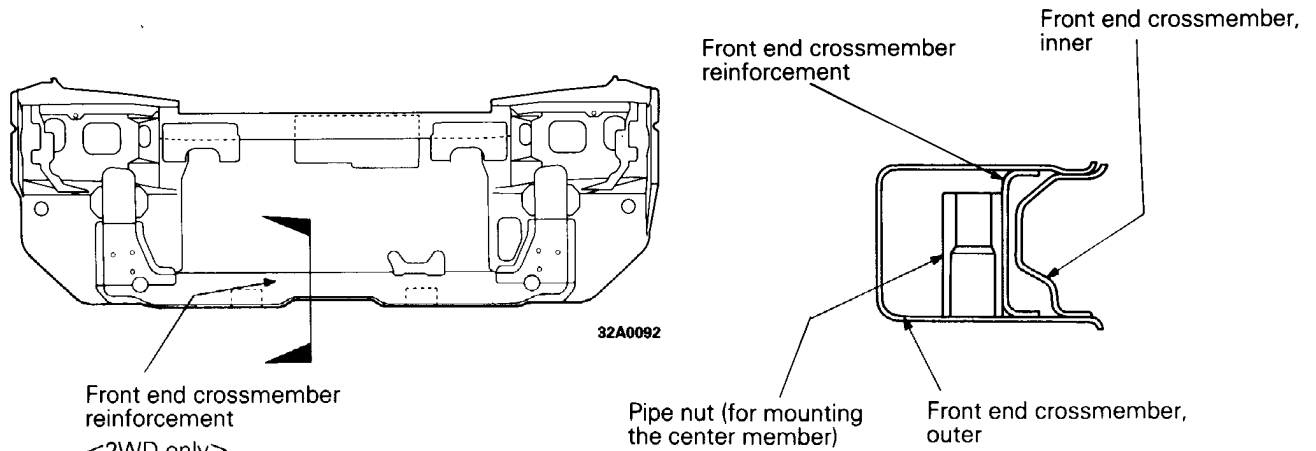


33A0158

(3) In conjunction with the adoption of the engine oil cooler, an oil cooler bracket has been provided.

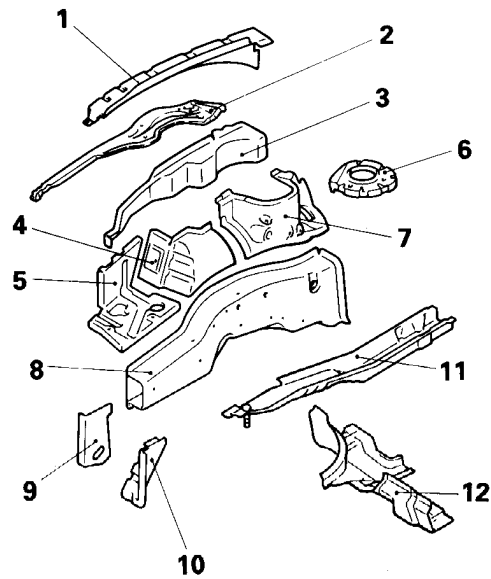
## (4) Front end crossmember

Because the center member, which supports the engine, is mounted beneath the center of the front end crossmember, pipe nuts (two) and a reinforcement are used to strengthen this area.



## Fender Shield

1. Front upper frame, outer
2. Front upper frame, lower
3. Front upper frame, inner
4. Front fender shield
5. Shield plate
6. Strut house bracket
7. Strut house panel
8. Front sidemember
9. Front tie down bracket, outer
10. Front tie down bracket, inner
11. Front sidemember rear reinforcement
12. Front sidemember, rear



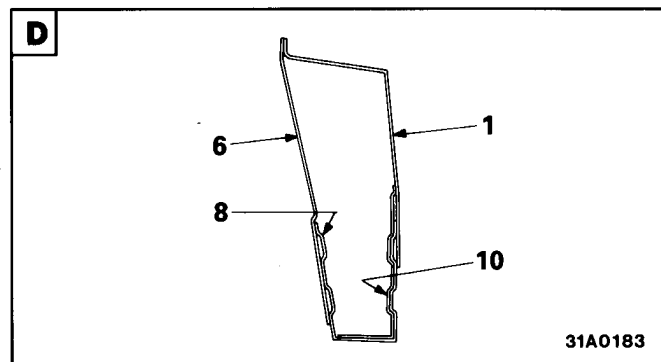
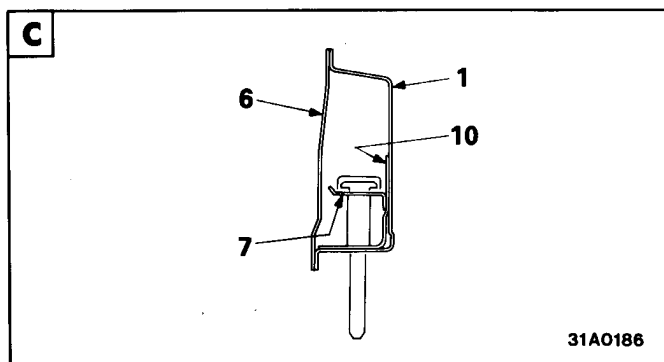
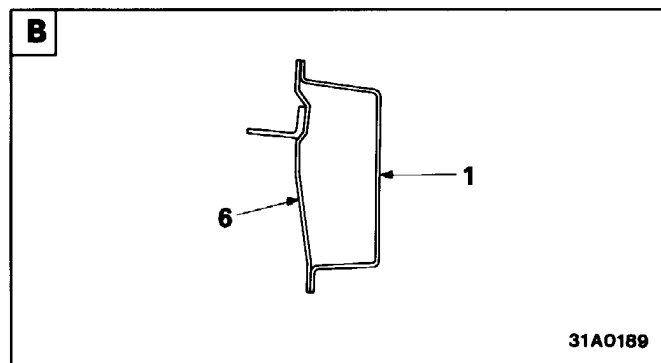
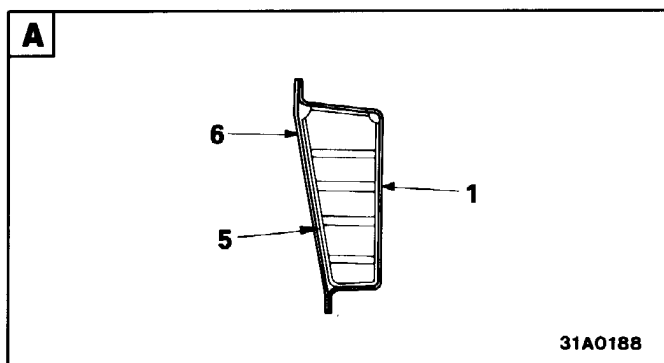
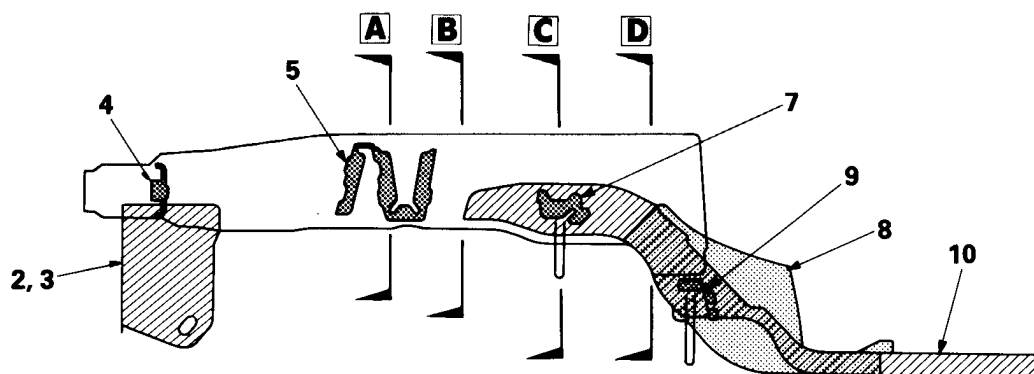
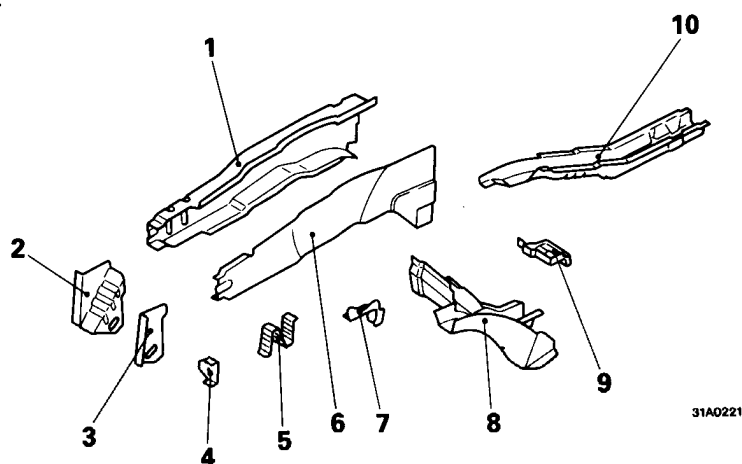
31A0227



## (1) Front sidemember (Left side)

The following reinforcements have been installed to the front sidemember (Left side).

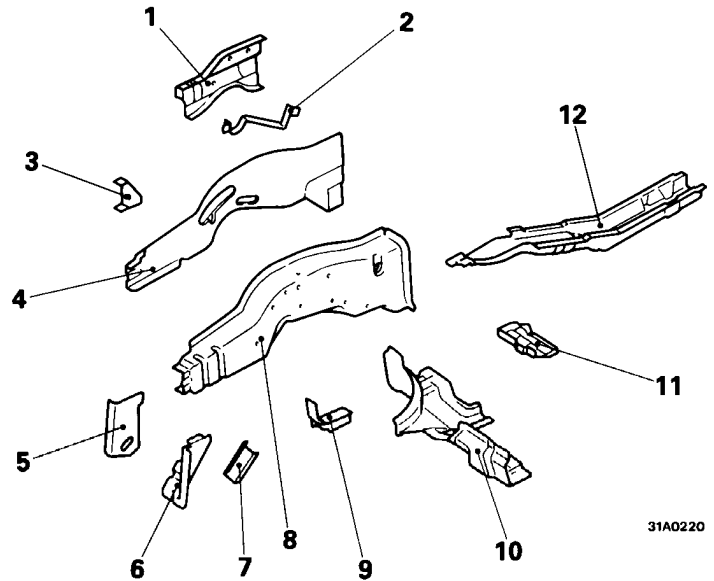
1. Front sidemember, inner
2. Front tie down bracket, inner
3. Front tie down bracket, outer
4. Absorber bracket
5. Front sidemember bulkhead
6. Front sidemember, outer
7. Pipe support, front
8. Front sidemember, rear
9. Pipe support, rear
10. Front sidemember rear reinforcement



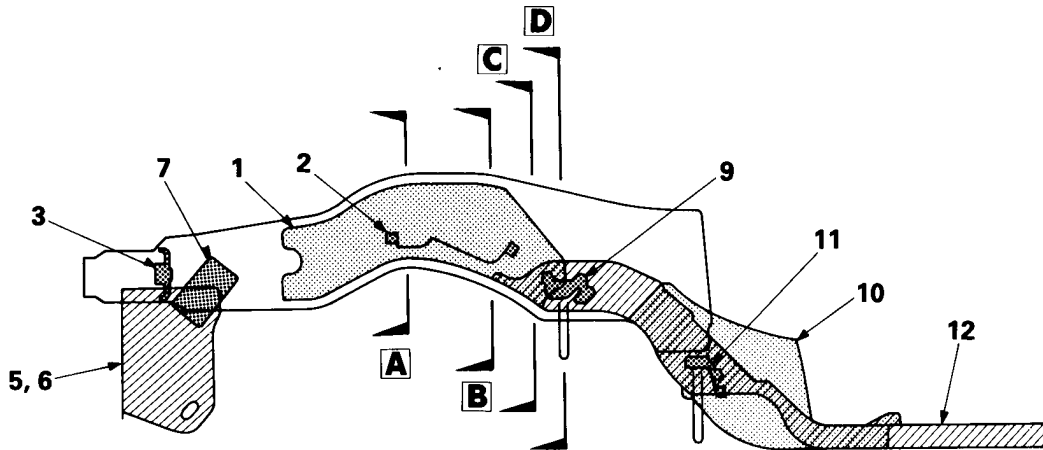
(2) Front sidemember (Right side)

The following reinforcements have been installed to the front sidemember (Right side).

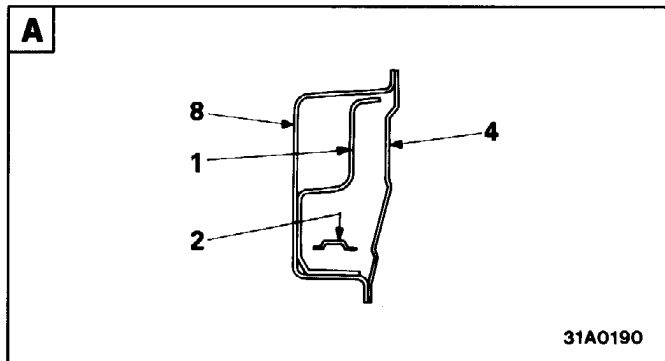
1. Front sidemember front reinforcement
2. Bolt guide plate
3. Absorber bracket
4. Front sidemember, outer
5. Front tie down bracket, outer
6. Front tie down bracket, inner
7. Condenser tank bracket
8. Front sidemember, inner
9. Pipe support, front
10. Front sidemember, rear
11. Pipe support, rear
12. Front sidemember rear reinforcement



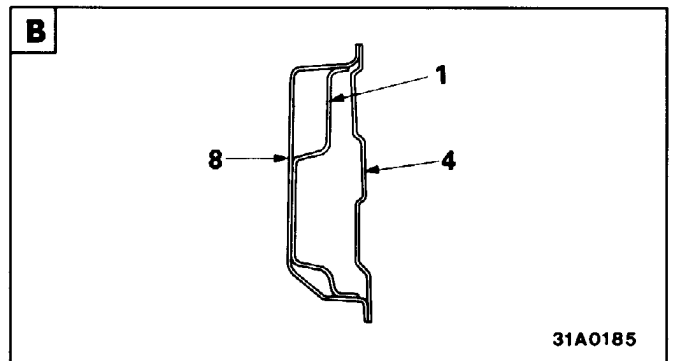
31A0220



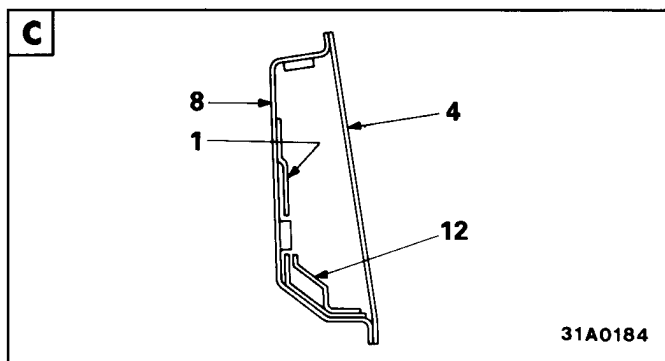
31A0181



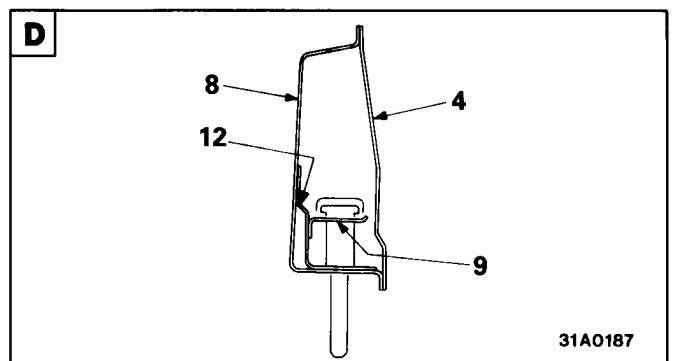
31A0190



31A0185

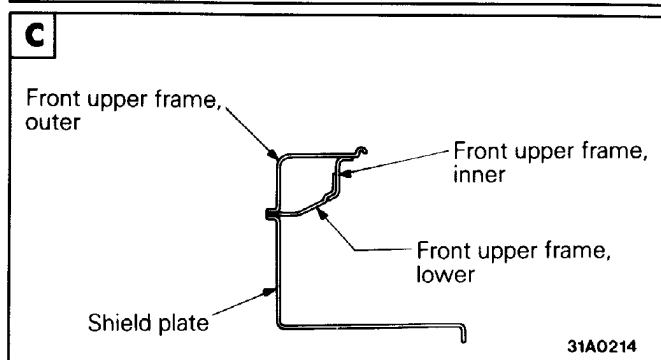
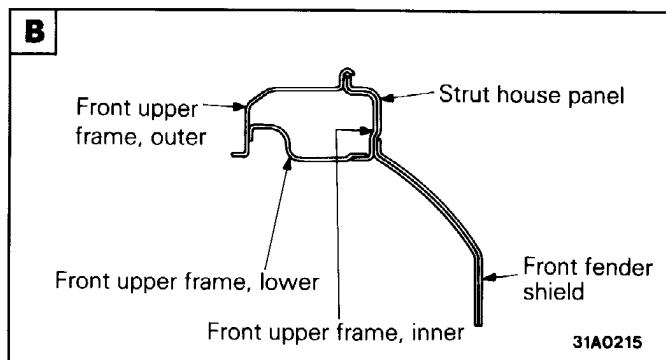
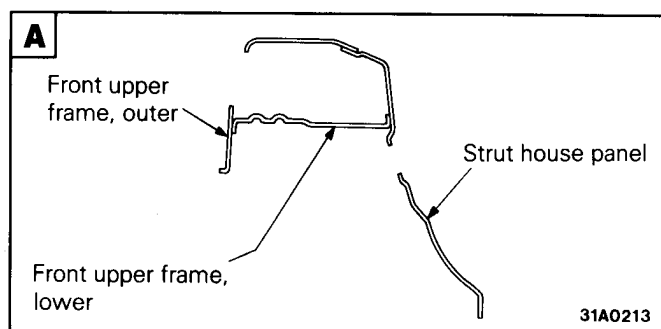
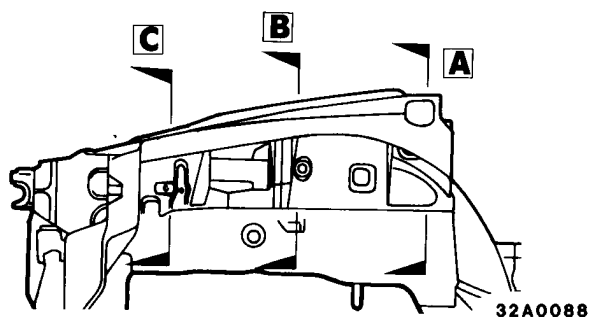


31A0184

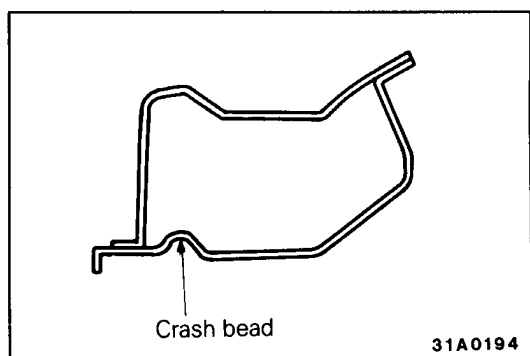
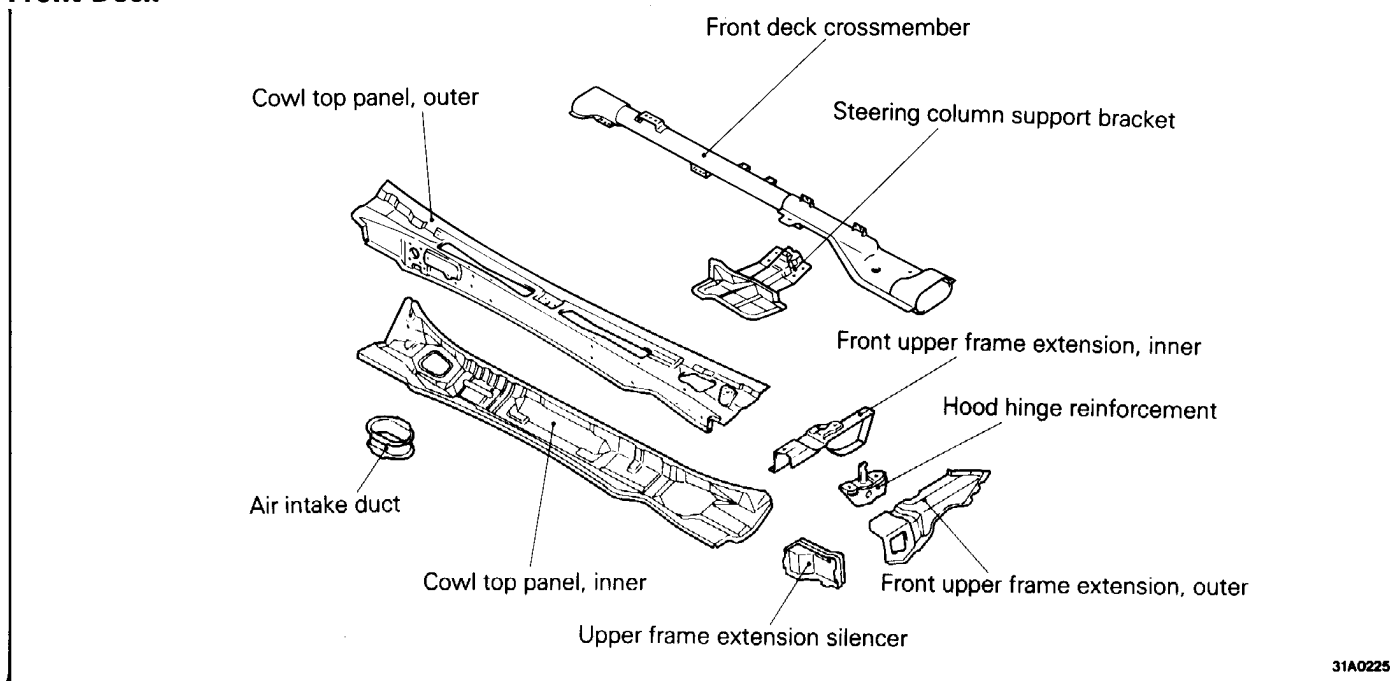


31A0187

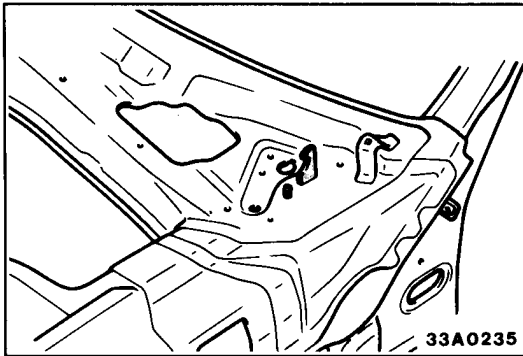
(3) Closed-section construction has been adopted for the entire length of the upper frame, thereby providing high rigidity.



## Front Deck

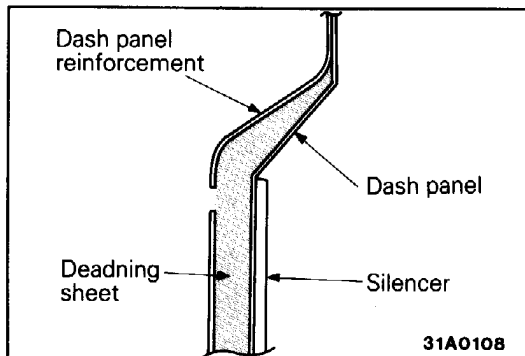
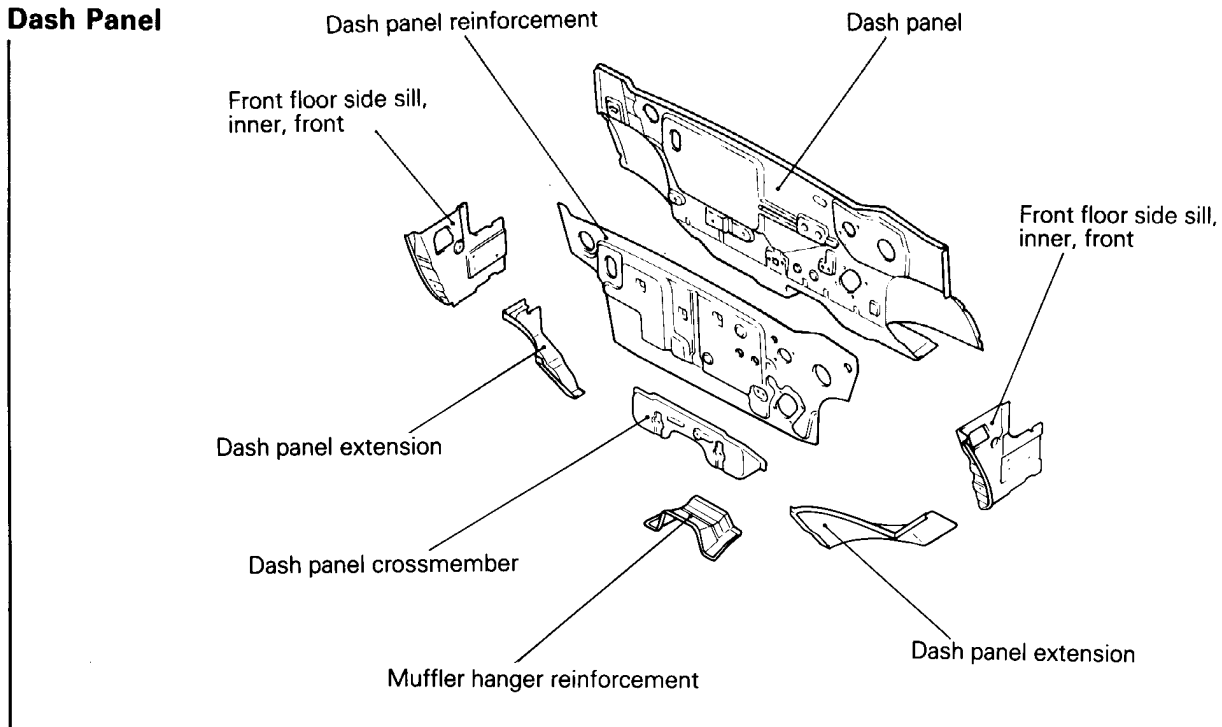


(1) The cowl top panel (inner) has been provided with a crash bead in order to absorb the energy of a collision. As a result, this prevents the steering wheel from being pulled out of the driver's hands during a collision, and thereby adds safety.



- (2) In order to prevent the hood from being pushed into the interior during a collision, a safety hook has been provided for added safety of the driver and passengers.

### Dash Panel



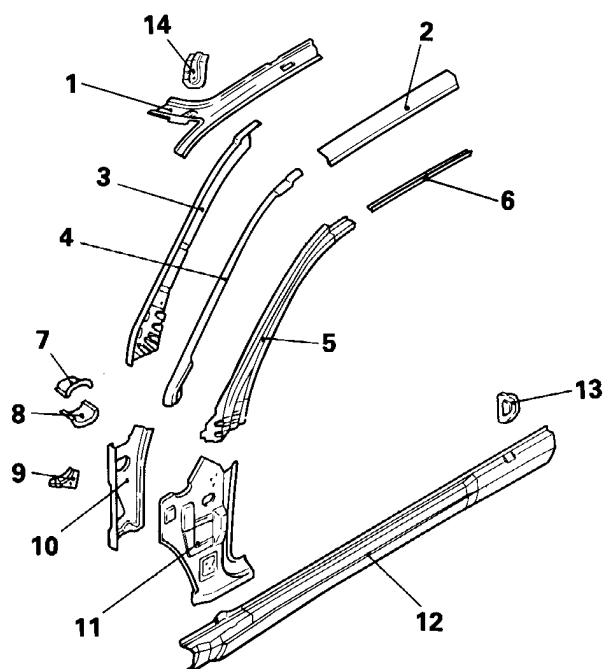
- (1) The dash panel construction is a double-wall construction with a deadening sheet between, an excellent construction that, together with the silencer attached at the interior side, provides superb sound-insulation and vibration-prevention characteristics.

## SIDE BODY

The side body construction is a separate design in which the independent individual panels are assembled by welding.

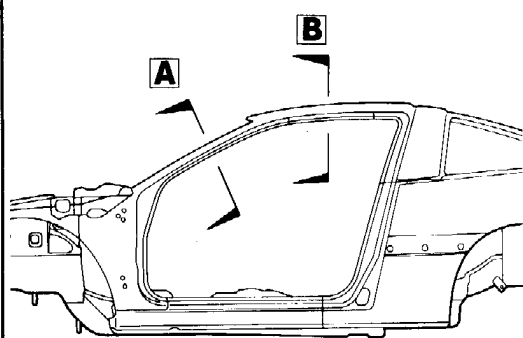
### Front Side Structure

1. Roof side rail, inner
2. Roof side rail, outer
3. Front pillar, inner, upper (A)
4. Front pillar, inner, upper (B)
5. Front pillar, outer, upper
6. Roof drip channel
7. Deck crossmember support, upper
8. Deck crossmember support, lower
9. Deck crossmember stay reinforcement
10. Front pillar, inner, lower
11. Front pillar, outer, lower
12. Front floor side sill, outer
13. Side sill silencer
14. Guide plate (Vehicles with sun roof only)

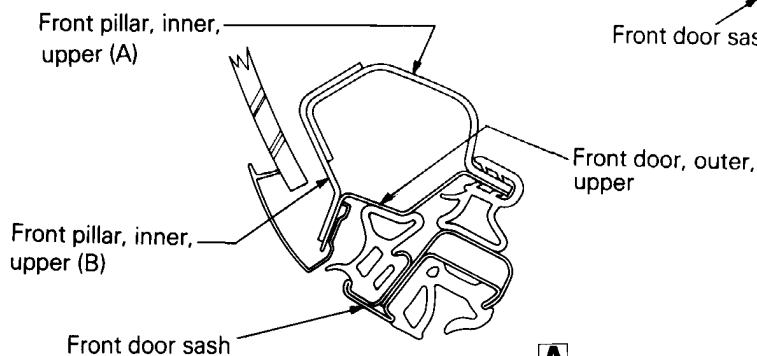


31A0223

- (1) The front pillar has a concealed configuration, resulting in flush body surfaces. In addition, air resistance and wind noise are reduced by the double door-check configuration with the front doors.

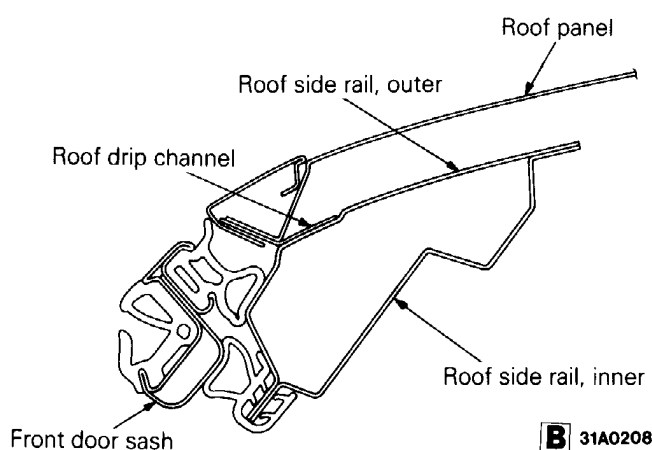


32A0089



31A0207

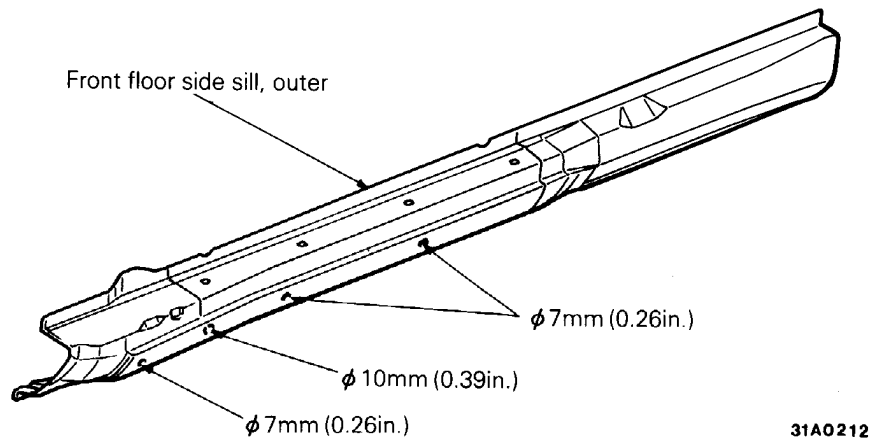
**A**



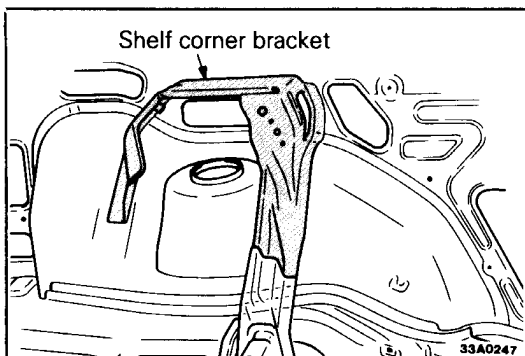
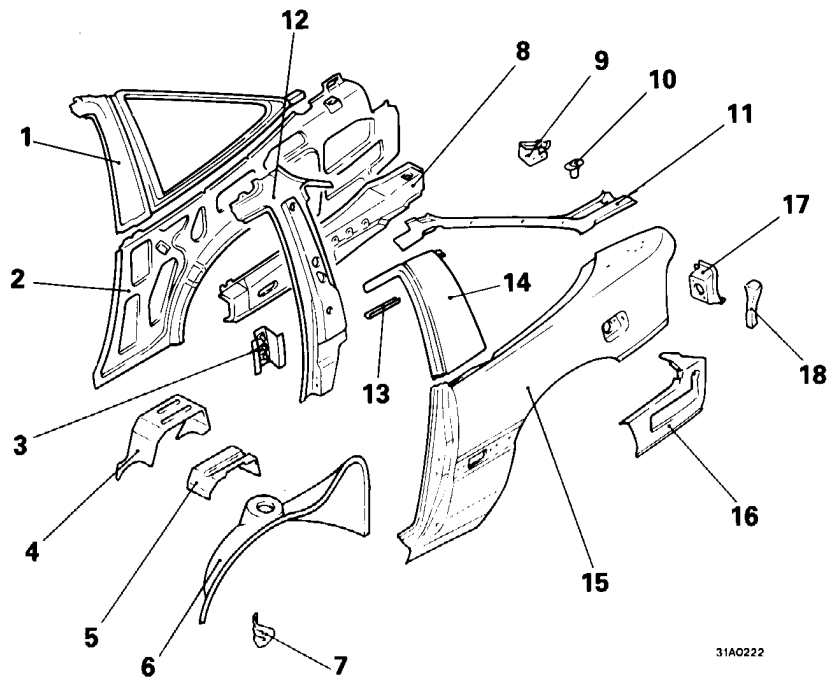
**B** 31A0208

**Side sill, outer**

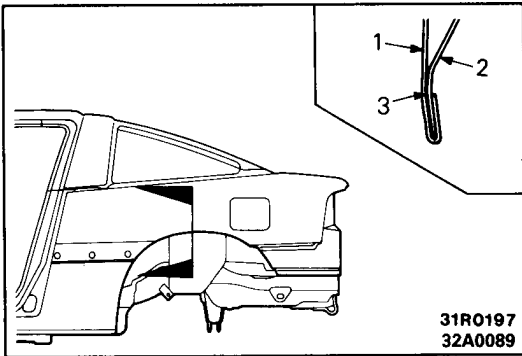
Installation holes (shown in the figure) are provided for models equipped with the side air dam.

**Rear Side Structure**

1. Quarter panel, inner, upper
2. Quarter panel, inner, lower
3. Front seat belt reinforcement, upper
4. Shelf corner bracket
5. Seat striker reinforcement
6. Rear wheelhouse, inner
7. Rear wheelhouse extension, front
8. Beltline reinforcement
9. Gas spring bracket
10. Drain pipe
11. Rear pillar, outer
12. Center pillar reinforcement, upper
13. Roof drip channel extension
14. Center pillar, outer
15. Quarter panel, outer
17. Rear lamp housing

**Rear wheelhouse, inner**

The shelf corner bracket is connected to the rear floor crossmember (upper) in order to provide sufficient rigidity to input from the rear tires.



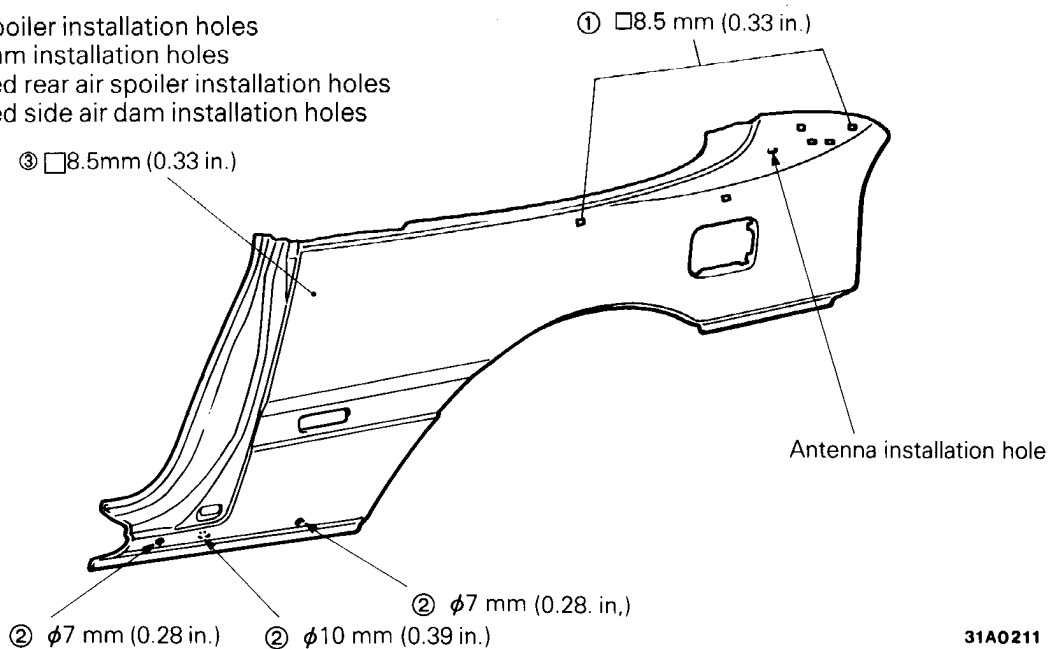
**Quarter panel**

(1) In order to maintain sufficient clearance for installation of wide tires, the upper part of the wheel arch is hemmed.

- 1. Quarter panel, outer
- 2. Quarter panel, inner, lower
- 3. Adhesive

(2) Installation holes (shown in the figure) are provided for models equipped with the side air dam and rear air spoiler.

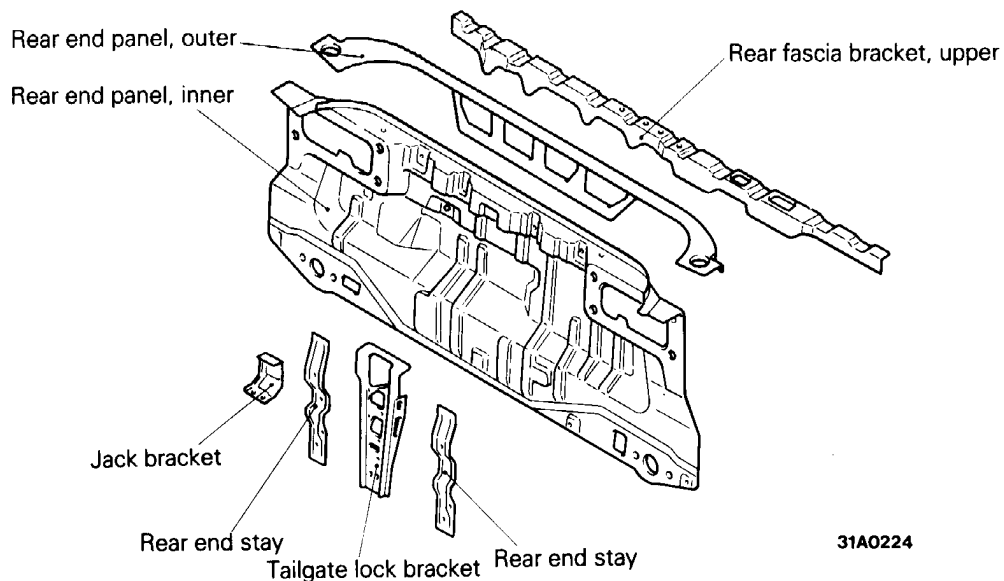
- ① : Rear air spoiler installation holes
- ② : Side air dam installation holes
- ① + ③ : Large-sized rear air spoiler installation holes
- ② + ④ : Large-sized side air dam installation holes



**REAR BODY**

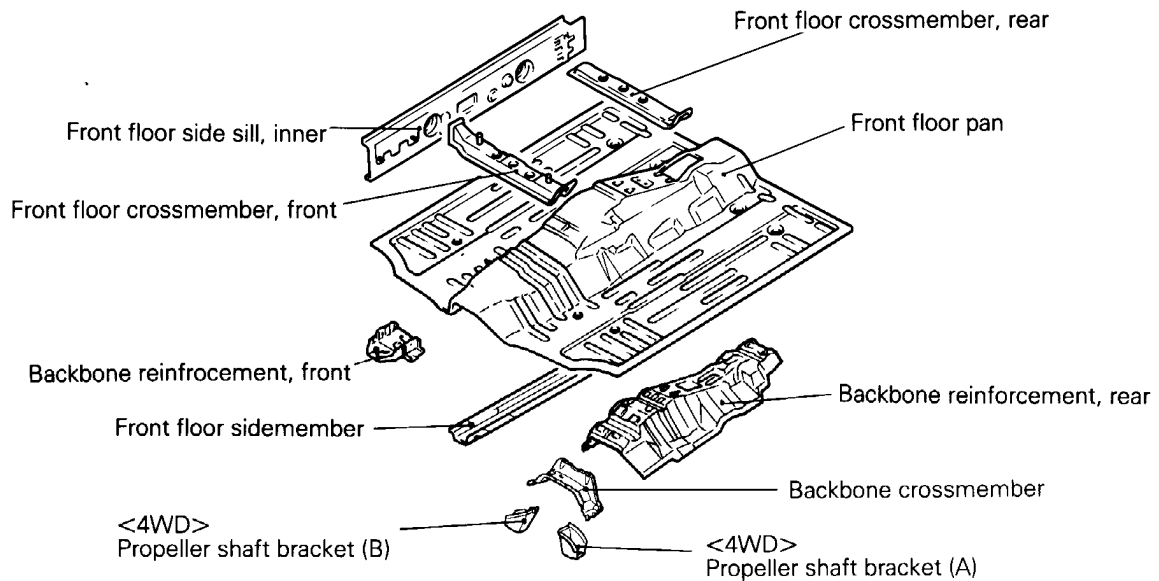
**Rear End Panel**

The rear end panel is installed at the outer side of the quarter panel in order to facilitate replacement procedures.



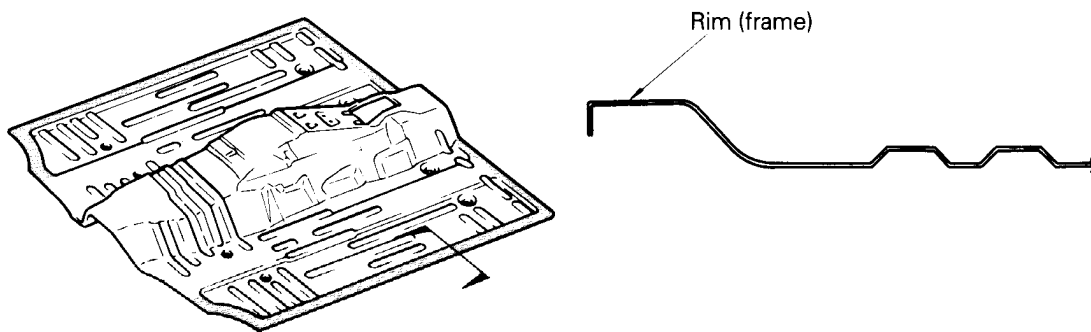
## UNDER BODY

## Front Floor



31A0235

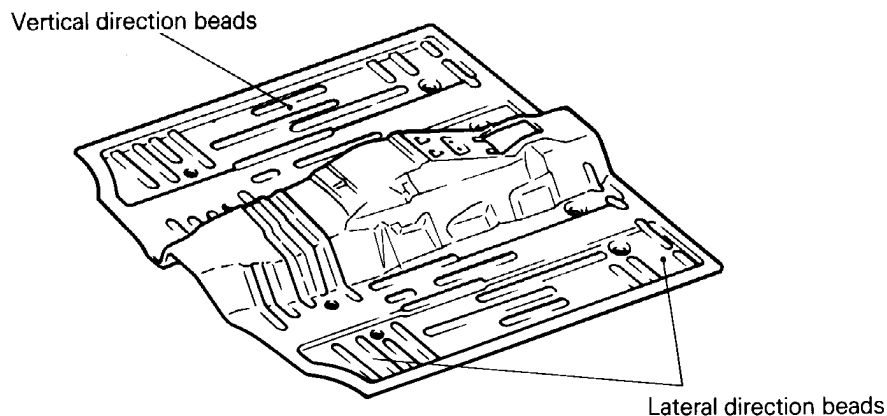
- (1) A framed floor construction (with a rim completely around the floor pan) has been adopted, thus increasing the rigidity of the panel itself.



31A0253

31A0054

- (2) By arranging the beads (at locations related to underfloor rectifications) in the vertical direction, this combined with the beads in the lateral direction, results in a form with a high rigidity effect.



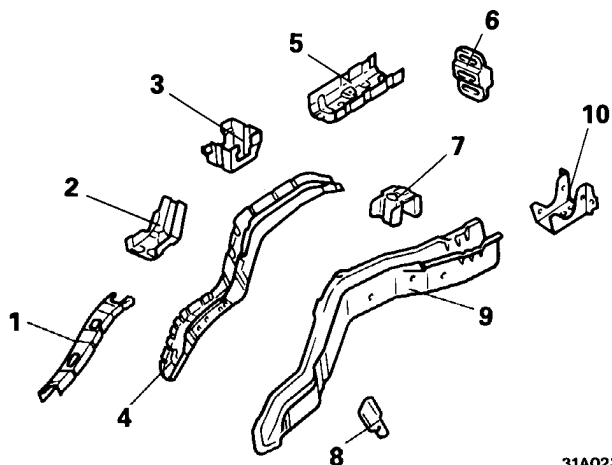
31A0253



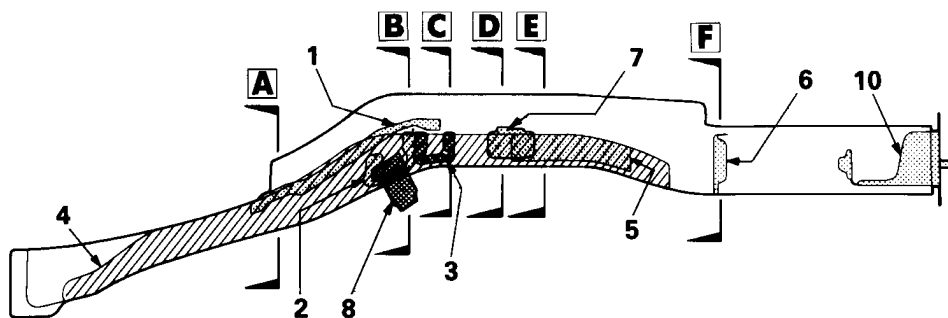
Because the rear part of the rear floor sidemember is almost straight, and the cross-section is larger, the rear-end collision characteristics are excellent.

(2) The following reinforcements have been installed to the rear floor sidemember.

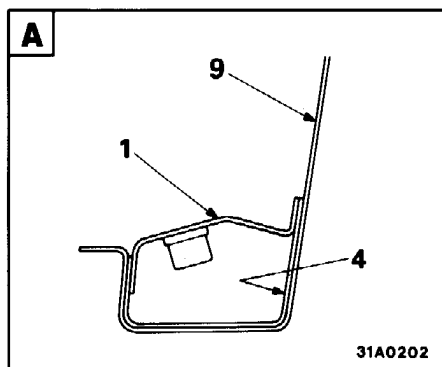
1. Sidemember seatbelt reinforcement
2. Rear floor sidemember bulkhead, front
3. Rear floor sidemember bulkhead, rear
4. Rear floor sidemember reinforcement
5. Rear floor sidemember center reinforcement <2WD only>
6. Rear floor sidemember bulkhead <2WD only>
7. Differential mount bulkhead <4WD only>
8. Brake hose bracket <2WD only>
9. Rear floor sidemember
10. Rear floor sidemember extension



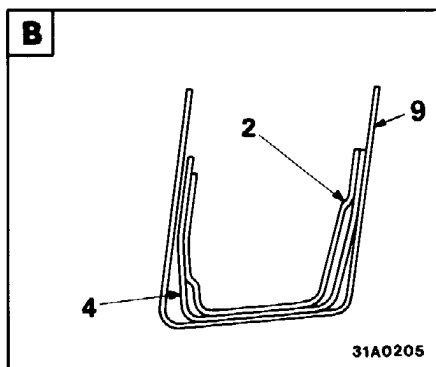
31A0234



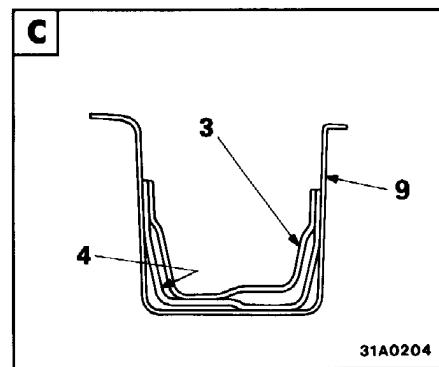
31A0358



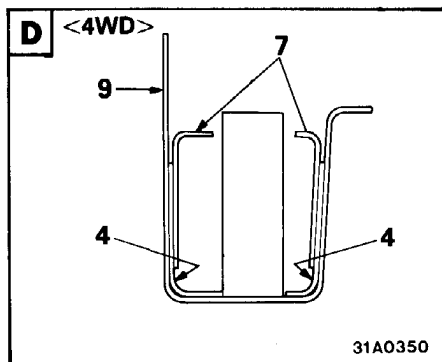
31A0202



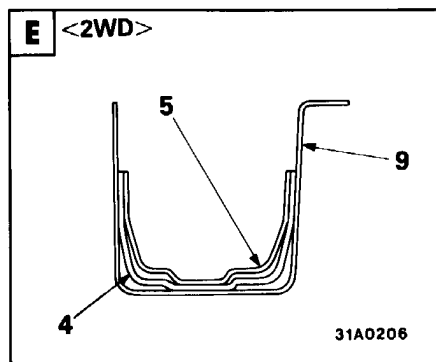
31A0205



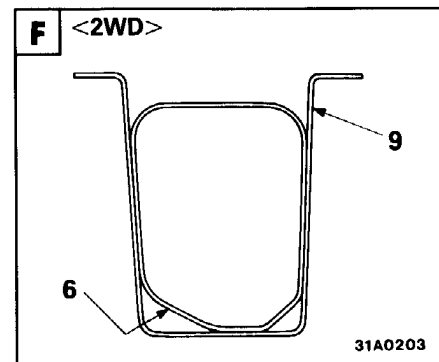
31A0204



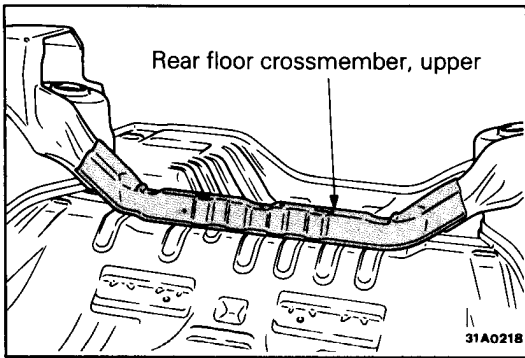
31A0350



31A0206



31A0203



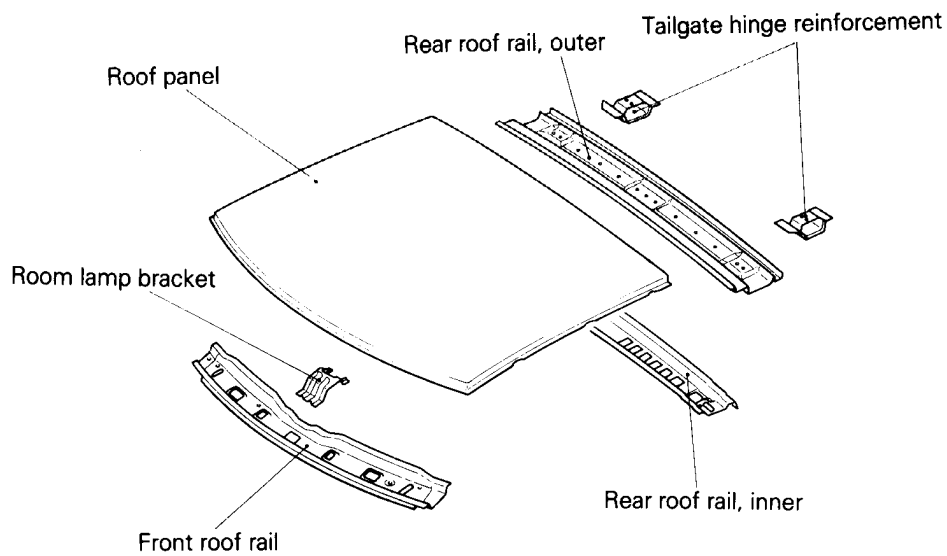
**Rear Floor Crossmember, Upper**

By providing a rear floor crossmember (upper) and coupling it with the side body, rigidity has been maintained and the spare tire is prevented from being pushed into the passenger compartment in a collision.

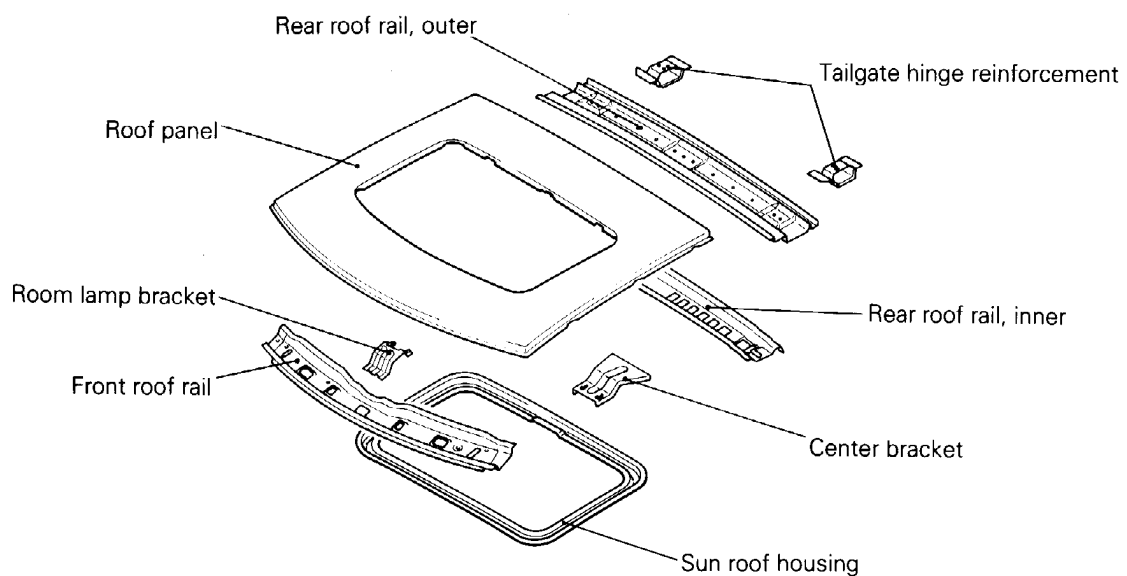
**ROOF**

A construction without the roof bow has been achieved by making the roof surface small and increasing the camber.

**(Vehicles without sun roof)**

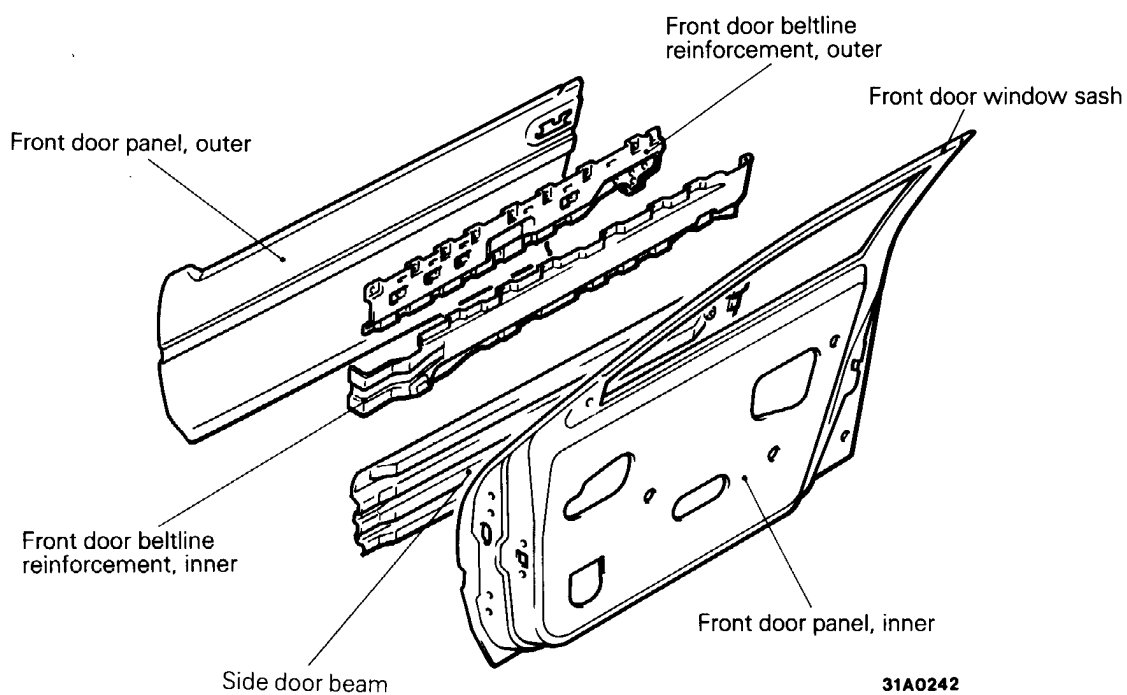


**(Vehicles with sun roof)**



**DOOR**

Side door beam and beltline reinforcements have been provided in order to protect occupants during a collision from the side.

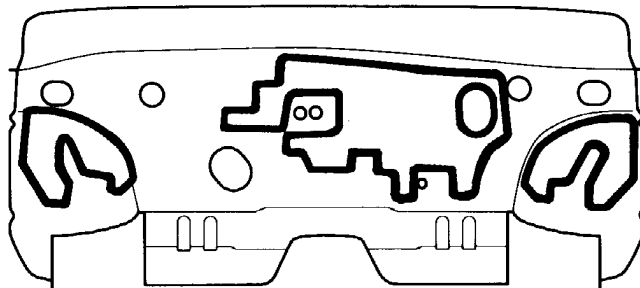


31A0242

## SILENCER APPLICATION LOCATIONS

In order to reduce vibration and screen out heat from the exhaust gas, silencers (melting sheets) are applied to the top of the floor and to the passenger compartment side of the dash panel. If

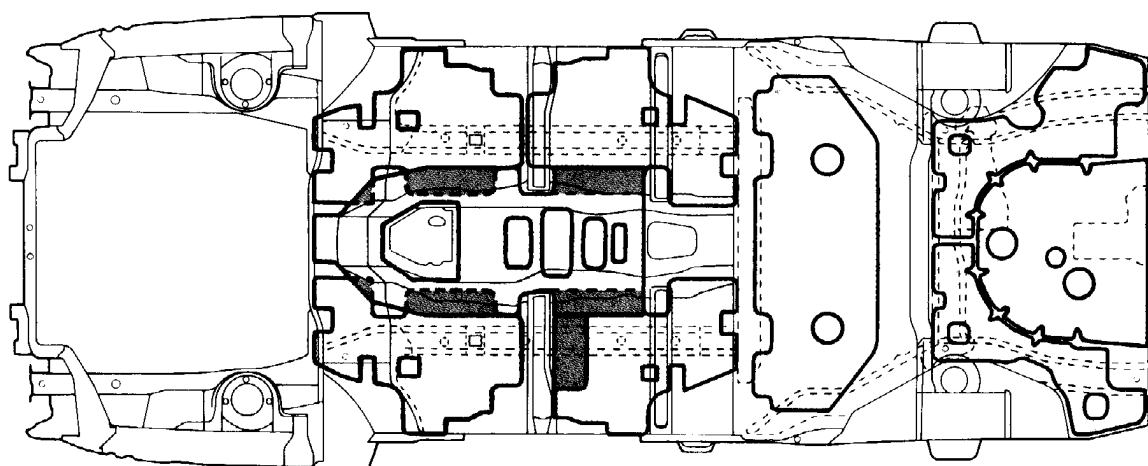
the silencers come off during welded panel replacement or other repairs, cut the replacement parts in the shapes indicated and apply them in the appropriate locations.



31A0216

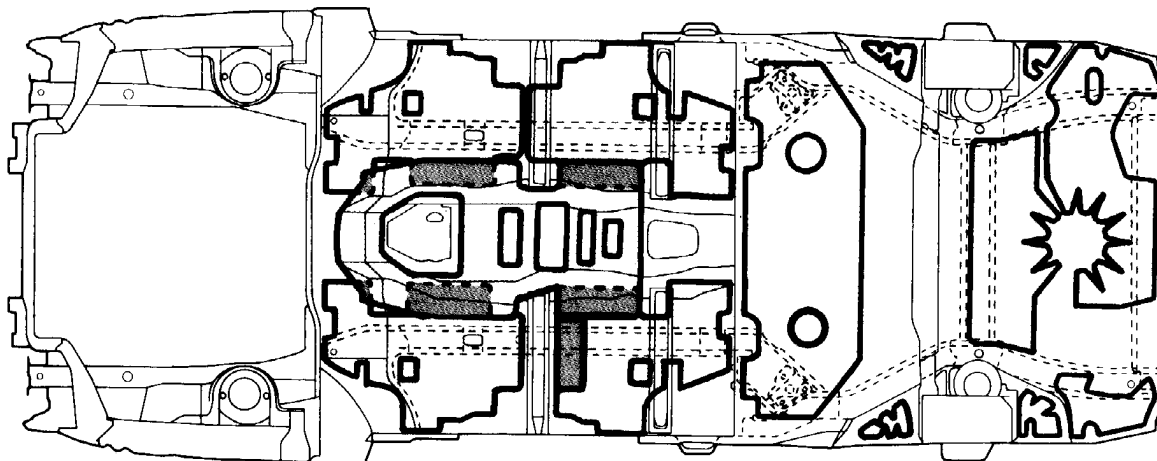
**Passenger compartment side of the dash panel**

<2WD>



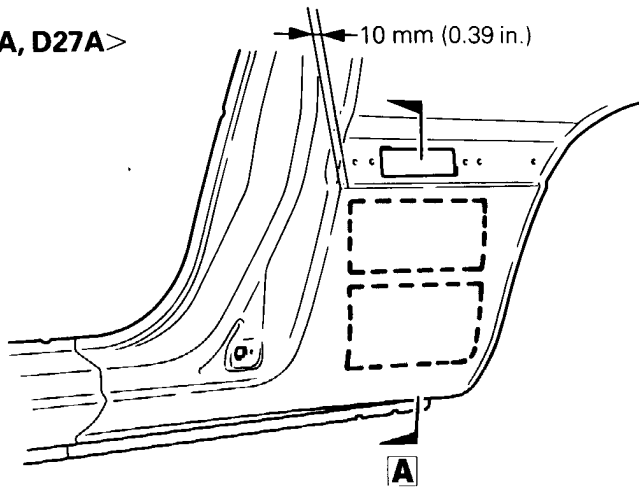
31A0233

<4WD>




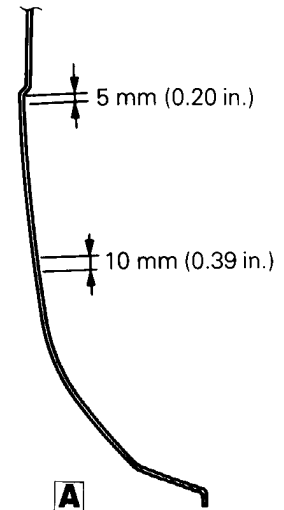
31A0359

&lt;D22A, D27A&gt;



31A0219

Attached to inner side of quarter panel

 1.6 mm (0.06 in.) thick

31A0217