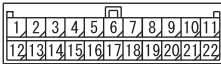


- NOTE
- *1: -ABS
-ABS AND ASC
-AS&G
-AUTOMATED MANUAL TRANSMISSION SYSTEM
-CAN
-CENTRAL DOOR LOCKING SYSTEM
-CHARGING SYSTEM
-COOLING SYSTEM
-CRUISE CONTROL SYSTEM
-ELECTRIC POWER STEERING SYSTEM
-EMERGENCY STOP SIGNAL SYSTEM
-ENGINE CONTROL SYSTEM
-FRONT FOG LAMP
- FUEL WARNING LAMP, OIL PRESSURE WARNING LAMP AND BRAKE WARNING LAMP
-HEADLAMP
-IMMOBILIZER SYSTEM
-METER AND GAUGE
-REAR FOG LAMP
-ROOM LAMP AND LUGGAGE COMPARTMENT LAMP
-SEAT BELT WARNING BUZZER
-SEMI-AUTOMATIC AIR CONDITIONER
-SRS
-TURN-SIGNAL LAMP AND HAZARD WARNING LAMP
- *2: -AS&G
-CAN
-CENTRAL DOOR LOCKING SYSTEM
-COOLING SYSTEM
-CRUISE CONTROL SYSTEM
-EMERGENCY STOP SIGNAL SYSTEM
-FRONT FOG LAMP
-FUEL WARNING LAMP, OIL PRESSURE WARNING LAMP AND BRAKE WARNING LAMP
-HEADLAMP
-HEADLAMP LEVELLING SYSTEM
-IMMOBILIZER SYSTEM
-METER AND GAUGE
- POWER WINDOWS
-REAR FOG LAMP
-REAR WIPER AND WASHER
-ROOM LAMP AND LUGGAGE COMPARTMENT LAMP
-SEAT BELT WARNING BUZZER
-SEMI-AUTOMATIC AIR CONDITIONER
-TAIL LAMP, POSITION LAMP, LICENCE PLATE LAMP AND LIGHTING MONITOR BUZZER
-TURN-SIGNAL LAMP AND HAZARD WARNING LAMP
-WINDSHIELD WIPER AND WASHER

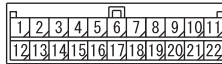
B-03

MU801515



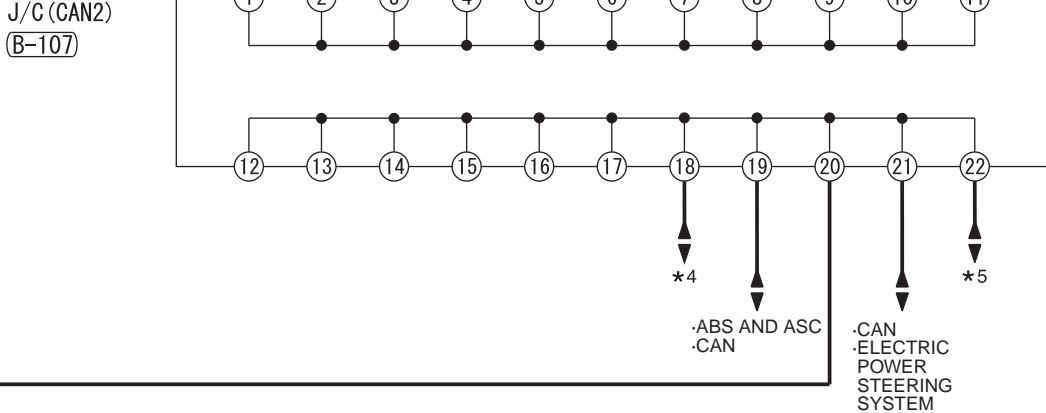
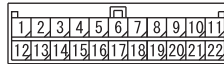
B-107

MU801515



B-118

MU801515



- *3: -ABS
-ABS AND ASC
-AS&G
-AUTOMATED MANUAL TRANSMISSION SYSTEM
-CAN
-CENTRAL DOOR LOCKING SYSTEM
-CHARGING SYSTEM
-COOLING SYSTEM
-CRUISE CONTROL SYSTEM
-ELECTRIC POWER STEERING SYSTEM
-EMERGENCY STOP SIGNAL SYSTEM
-ENGINE CONTROL SYSTEM
-FRONT FOG LAMP
-FUEL WARNING LAMP, OIL PRESSURE WARNING LAMP AND BRAKE WARNING LAMP
-HEADLAMP
-HEADLAMP LEVELLING SYSTEM
- IMMOBILIZER SYSTEM
-METER AND GAUGE
-POWER WINDOWS
-REAR FOG LAMP
-REAR WIPER AND WASHER
-ROOM LAMP AND LUGGAGE COMPARTMENT LAMP
-SEAT BELT WARNING BUZZER
-SEMI-AUTOMATIC AIR CONDITIONER
-SRS
-STARTING SYSTEM
-TAIL LAMP, POSITION LAMP, LICENCE PLATE LAMP AND LIGHTING MONITOR BUZZER
-TURN-SIGNAL LAMP AND HAZARD WARNING LAMP
-WINDSHIELD WIPER AND WASHER
- *4: -ABS
-ABS AND ASC
-AS&G
-AUTOMATED MANUAL TRANSMISSION SYSTEM
-CAN
-CHARGING SYSTEM
-COOLING SYSTEM
-CRUISE CONTROL SYSTEM
-ELECTRIC POWER STEERING SYSTEM
-ENGINE CONTROL SYSTEM
-FUEL WARNING LAMP, OIL PRESSURE WARNING LAMP AND BRAKE WARNING LAMP
-HEADLAMP
-IMMOBILIZER SYSTEM
-METER AND GAUGE
-SEMI-AUTOMATIC AIR CONDITIONER
-STARTING SYSTEM
-TAIL LAMP, POSITION LAMP, LICENCE PLATE LAMP AND LIGHTING MONITOR BUZZER
-WINDSHIELD WIPER AND WASHER
- *5: -ABS
-ABS AND SAC
-AS&G
-AUTOMATED MANUAL TRANSMISSION SYSTEM
-CAN
-CRUISE CONTROL SYSTEM
-ELECTRIC POWER STEERING SYSTEM
-EMERGENCY STOP SIGNAL SYSTEM
-ENGINE CONTROL SYSTEM
-FUEL WARNING LAMP, OIL PRESSURE WARNING LAMP AND BRAKE WARNING LAMP
-HEADLAMP
-METER AND GAUGE
-TAIL LAMP, POSITION LAMP, LICENCE PLATE LAMP AND LIGHTING MONITOR BUZZER
-WINDSHIELD WIPER AND WASHER