
REAR SUSPENSION

CONTENTS

GENERAL	2
Outline of Changes	2
SPECIFICATIONS	2
General Specifications	2
Service Specification	2
STABILIZER BAR	3

GENERAL**OUTLINE OF CHANGES**

- Coil spring and shock absorber have been changed. <Sedan-4WD for Australia>
- The shape of the stabilizer bar has been changed. Service points of maintenance for the stabilizer bar have been established as a result of this. <Hatchback and Sedan – Vehicles for Europe and General Export>

SPECIFICATIONS**GENERAL SPECIFICATIONS****COIL SPRING <Sedan-4WD for Australia>**

Items	Specifications	
	NEW	OLD
Wire dia. mm	10.1	9.9
O.D. mm	96.1	96.1
Free length mm	367.7	370.0
Spring constant N/mm	18.8	17.1
Identification colour	Orange+Gray	Brown

SHOCK ABSORBER <Sedan-4WD for Australia>

Item	Specification	
	NEW	OLD
Identification colour	Purple	White

SERVICE SPECIFICATION

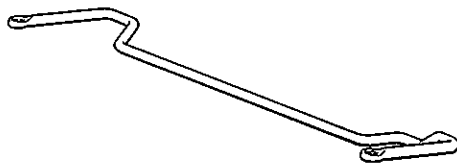
Item	Specification
Stabilizer bar mounting bolt protrusion amount mm	17–19

STABILIZER BAR

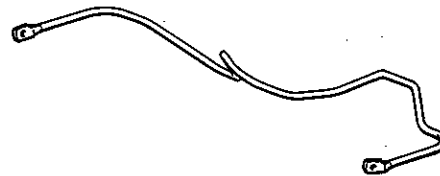
<Hatchback and Sedan-Vehicles for Europe and General Export>

NEW

OLD

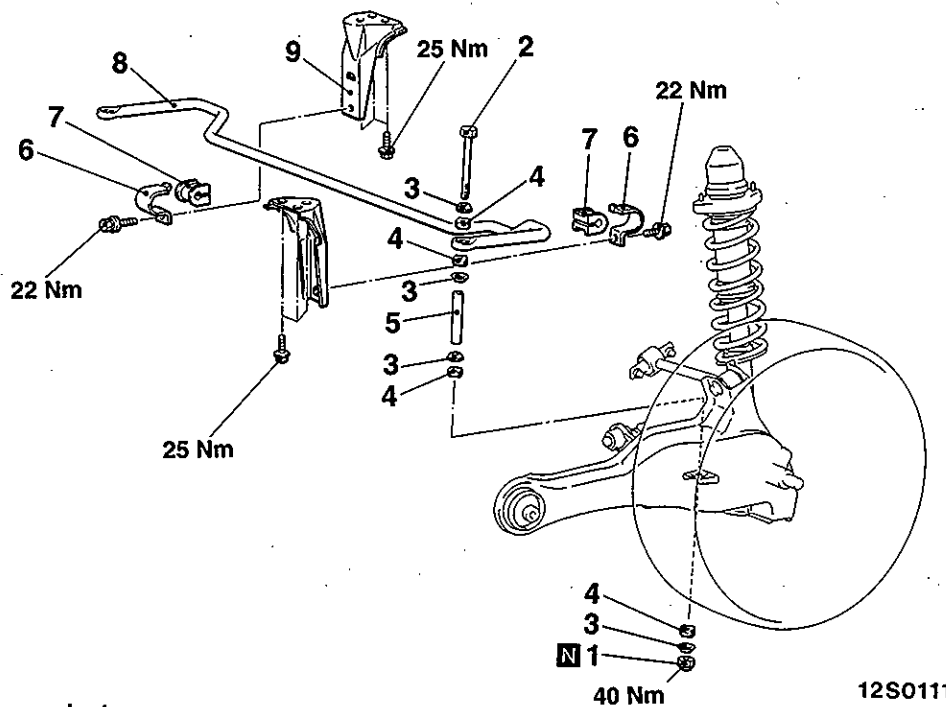


12S0116



12S0115

REMOVAL AND INSTALLATION



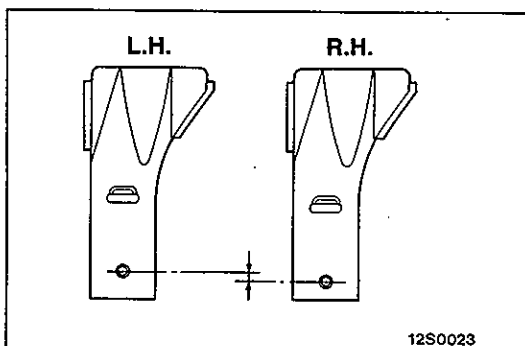
Removal steps



1. Self locking nut
2. Bolt
3. Joint cup
4. Stabilizer rubber
5. Pipe



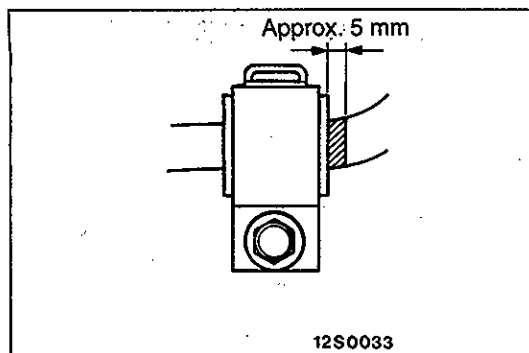
6. Fixture
7. Bushing
8. Stabilizer bar
9. Stabilizer bracket



INSTALLATION SERVICE POINTS

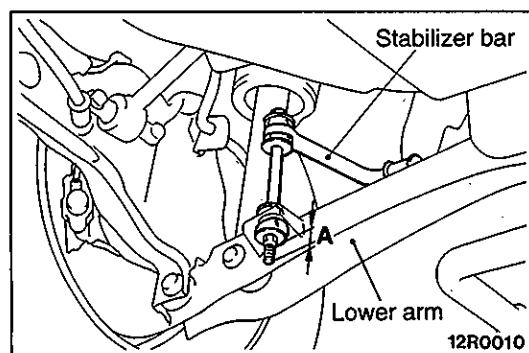
►A◄ STABILIZER BRACKET INSTALLATION

Because the left and right installation positions of the fixtures are different, be careful not to make a mistake when installing the stabilizer bracket.



►B◄ STABILIZER BAR/BUSHING INSTALLATION

Place the identification mark of the stabilizer bar to the left, and install the bushing so that the identification mark protrudes approximately 5mm from the edge of the inside of the bushing.



►C◄ SELF LOCKING NUT INSTALLATION

Tighten the self-locking nut so that the protrusion amount (dimension A in the illustration) of the end of the stabilizer bar mounting bolt is at the standard value.

Standard value (A): 17–19 mm

GROUP 37 STEERING

GENERAL

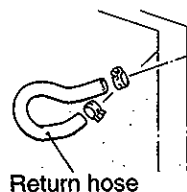
OUTLINE OF CHANGES

- The cooler pipe has been abolished. The shape of the return hose has been changed because of this. <Except vehicles for Europe (1300 – carburettor, 1500 – carburettor)>

POWER STEERING HOSES

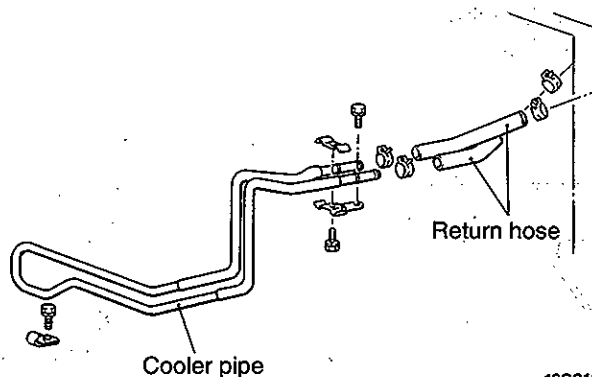
REMOVAL AND INSTALLATION

NEW



13S0104

OLD



13S0105