

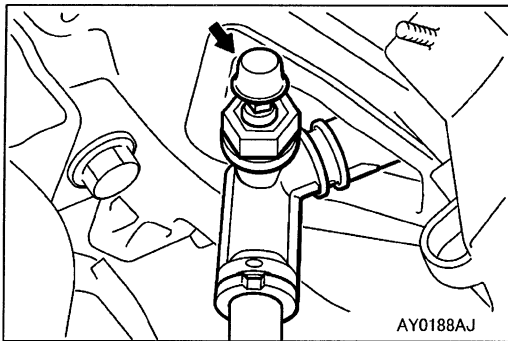
## GROUP 21

# CLUTCH

### GENERAL

#### OUTLINE OF CHANGE

- The following service procedures have been added due to the introduction of the F5MV1 type transmission.
- "NOTE" has been added in the clutch pedal service procedure.
- The clutch switch inspection has been added due to the introduction of the F5MV1 type transmission.
- The clutch control has been changed due to the introduction of the F5MV1 type transmission.



### ON-VEHICLE SERVICE <F9Q>

#### BLEEDING

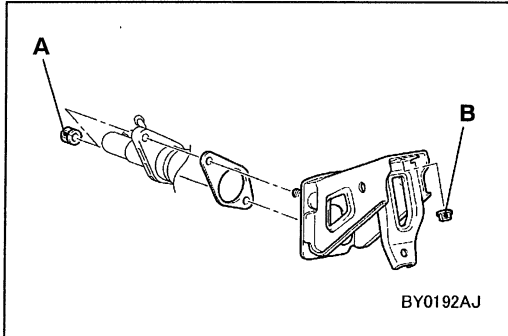
Specified brake fluid: DOT 3 or DOT 4

#### Caution

Avoid using a mixture of the specified fluid and other fluid, otherwise the clutch fluid will deteriorate resulting clutch fault.

## CLUTCH PEDAL

The descriptions other than the installation service points below are the same as before.



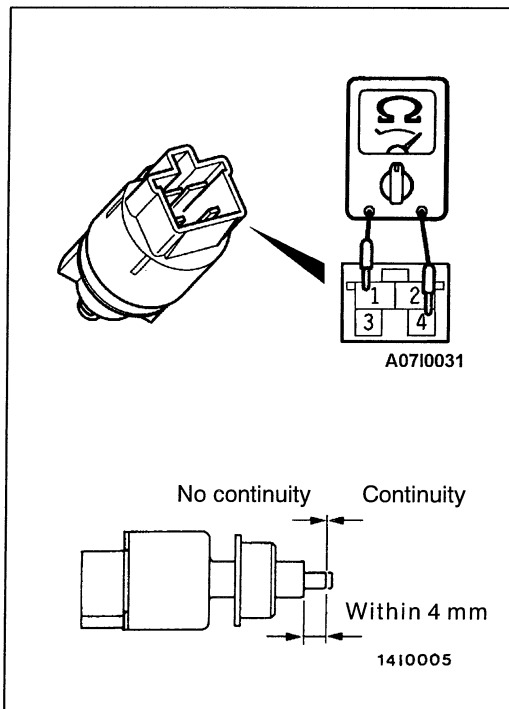
### INSTALLATION SERVICE POINT

#### ►A◄ MASTER CYLINDER MEMBER ASSEMBLY

Tighten the clutch master cylinder mounting nuts (A), and then the master cylinder member assembly mounting bolts (B).

#### NOTE

The master cylinder member assembly can not be positioned correctly if the pedal mounting bolts (B) are tightened first as the their holes are oblong holes.



### INSPECTION <F9Q>

#### CLUTCH SWITCH CHECK

1. Connect an ohmmeter to the clutch switch connector terminals.
2. Continuity should not exist when the plunger is pushed within 4 mm from the outer case end. Then, if the plunger is released, continuity will exist again.

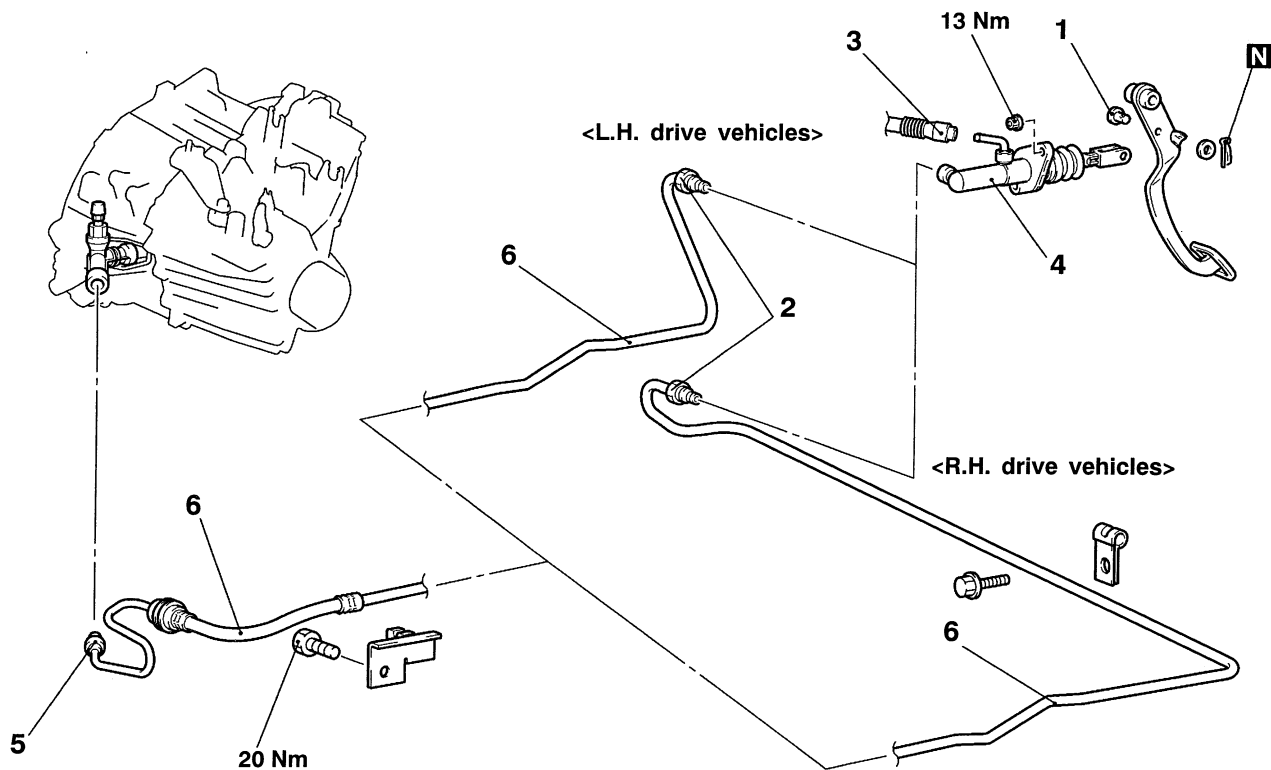
## CLUTCH CONTROL <F9Q>

### REMOVAL AND INSTALLATION

**Pre-removal Operation**  
Clutch Fluid Draining

**Post-installation Operation**

- Clutch Fluid Supplying
- Clutch Line Bleeding (Refer to P.21-1)
- Clutch Pedal Adjustment



AY0194AJ

#### Clutch master cylinder removal steps

- Battery and battery tray
- Intercooler pipe (Refer to GROUP 15 - Intercooler)
- Air cleaner
- Transmission mount and transmission mount bracket (Refer to GROUP 22 - Manual Transmission)
- Fuel filter
- 1. Clevis pin

- 2. Clutch tube connection (master cylinder side)
- 3. Reservoir hose connection
- 4. Clutch master cylinder

#### Clutch line removal steps

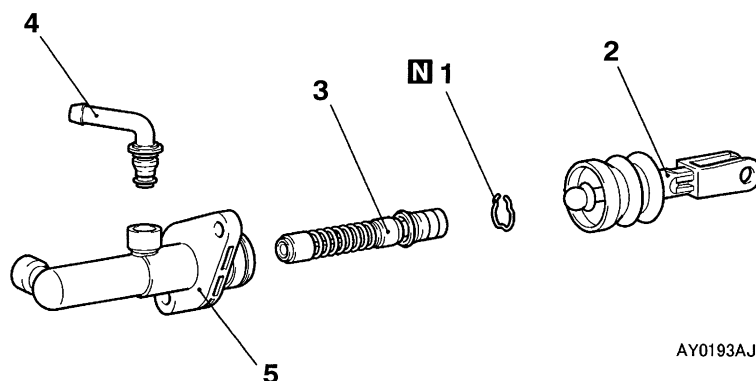
- 5. Clutch tube connection (transmission side)
- 6. Clutch tube assembly

## DISASSEMBLY AND REASSEMBLY

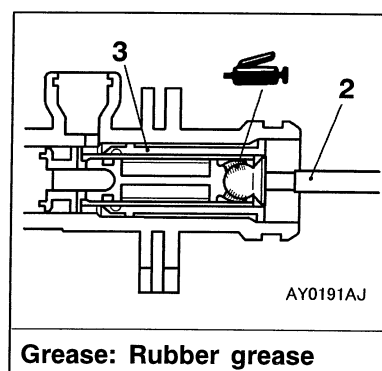
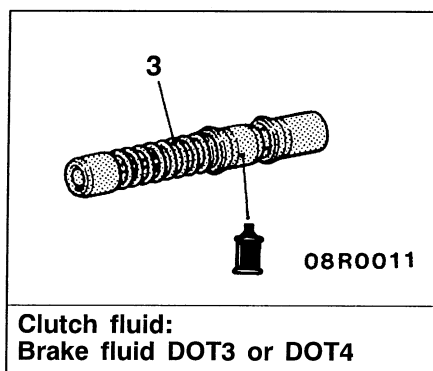
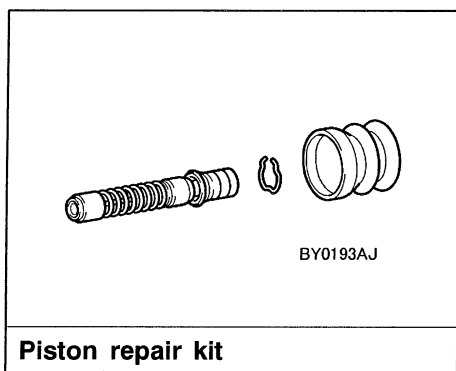
## CLUTCH MASTER CYLINDER

**Caution:**

Do not disassemble piston assembly. The piston assembly can not be reassembled.

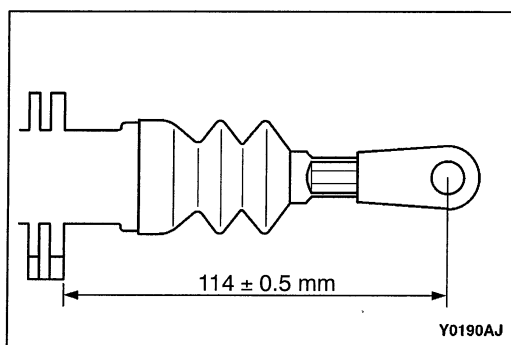


AY0193AJ

**Disassembly steps**

1. Piston stopper ring
2. Push rod assembly
3. Piston assembly

4. Connector
5. Clutch master cylinder body

**INSTALLATION SERVICE POINT****◀▶ PUSH ROD ASSEMBLY INSTALLATION**

Set the length of the push rod assembly to the shown dimension to make the adjustment of the clutch pedal easier.