

GROUP 15 INTAKE AND EXHAUST

GENERAL

OUTLINE OF CHANGES

- The intake manifold service procedure has been changed.

INTAKE MANIFOLD <4G9-SOHC>

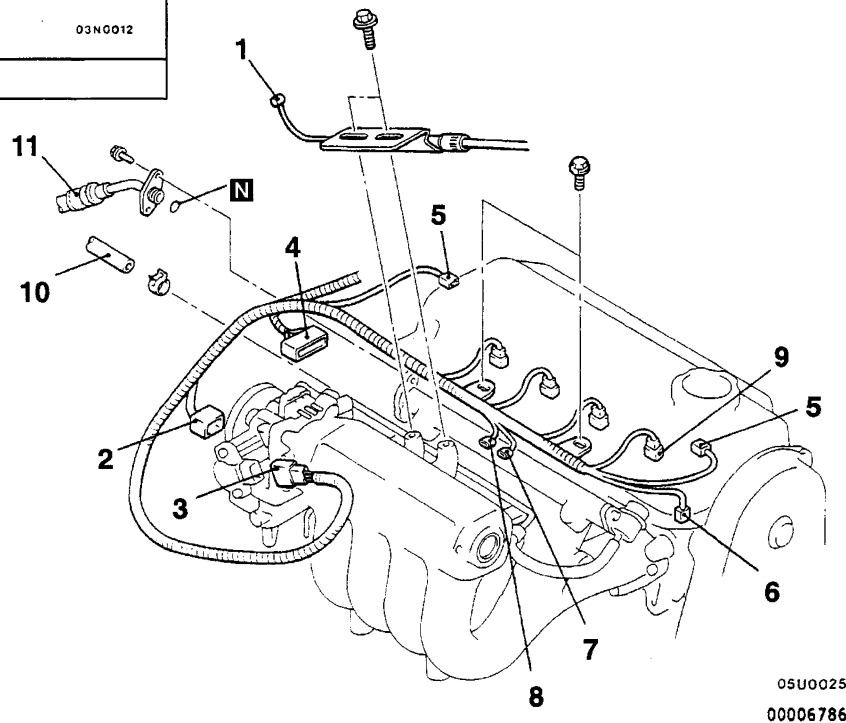
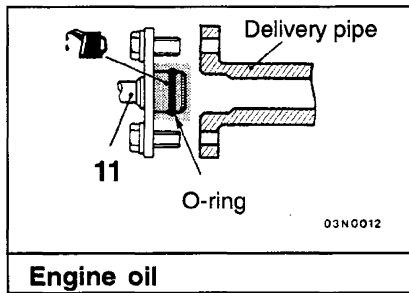
REMOVAL AND INSTALLATION

Pre-removal Operation

- (1) Fuel Discharge Prevention
- (2) Engine Coolant Draining
- (3) Air Cleaner and Air Intake Hose Removal

Post-Installation Operation

- (1) Engine Coolant Supplying
- (2) Accelerator Cable Adjustment
- (3) Air Cleaner and Air Intake Hose Installation



Removal steps

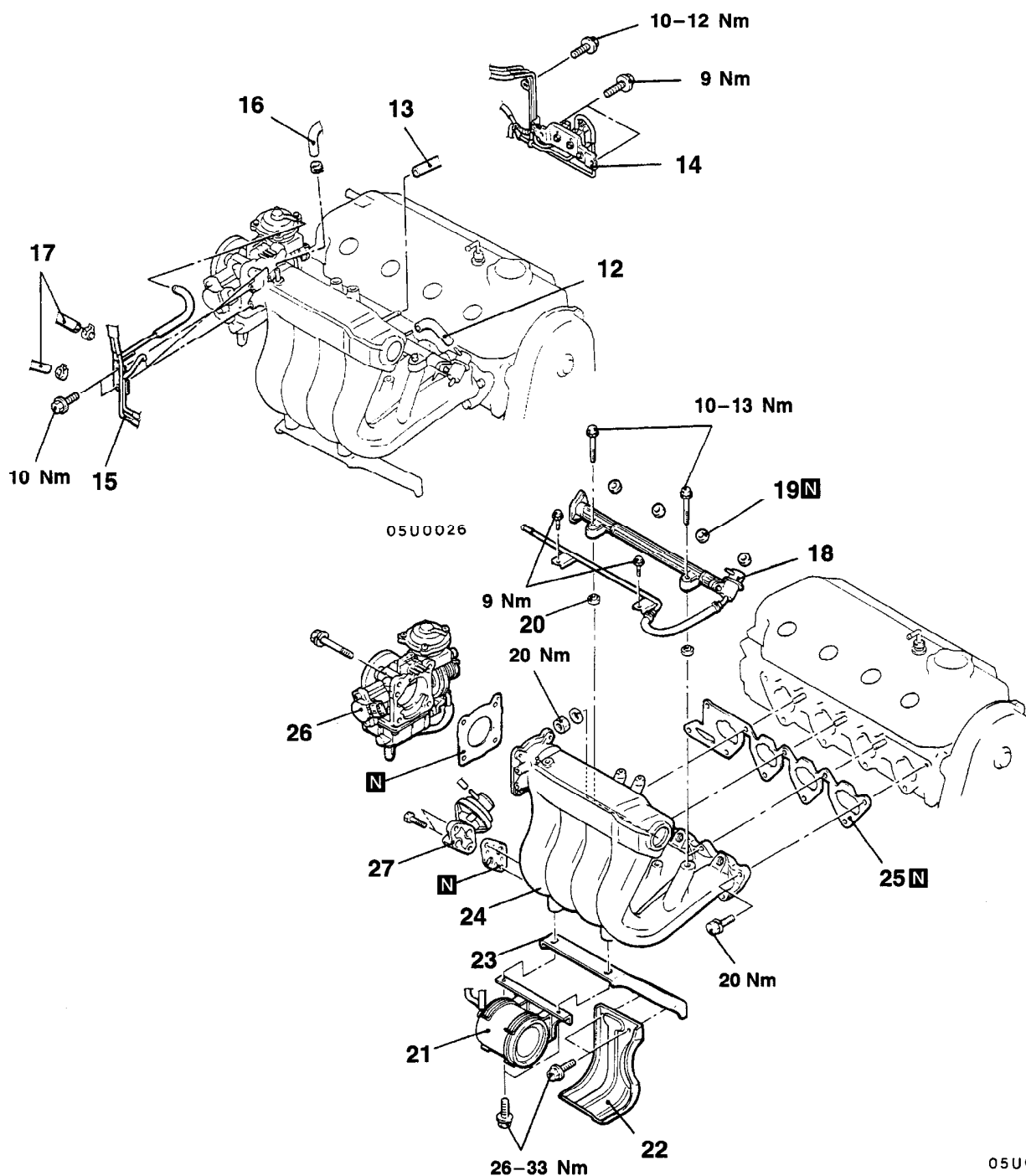
1. Accelerator cable connection
2. ISC connector
3. TPS connector
4. APS connector <Vehicles with TCL>
5. Ignition coil connector
6. Crank angle sensor connector
7. EGR solenoid valve connector

8. Purge control solenoid valve connector
9. Injector connector

10. Fuel return hose connection
11. Fuel high pressure hose connection

NOTE

For each service point, refer to Basic Manual.



05U0010
00006787

- | | |
|--|--|
| 12. Vacuum hose connection | 20. Insulator |
| 13. PCV hose connection | 21. Vacuum tank and vacuum tank bracket assembly <Vehicles with TCL> |
| 14. Solenoid valve and vacuum hose assembly connection | 22. Heat protector <4G93-M/T> |
| 15. Vacuum hose and pipe assembly connection <Vehicles with TCL> | 23. Intake manifold stay |
| 16. Brake booster vacuum hose connection | 24. Intake manifold |
| 17. Water hose connection | 25. Intake manifold gasket |
| 18. Delivery pipe, injector and pressure regulator assembly | 26. Throttle body |
| 19. Insulator | 27. EGR valve |

NOTE

For each service point, refer to Basic Manual.

