

GROUP 37A STEERING

GENERAL

OUTLINE OF CHANGES

- The following service procedures have been added to the addition of the diesel-powered vehicle.
Applicable models: 1900D
 - Removal and installation of the power steering oil pump
 - Removal and installation of the power steering hoses

POWER STEERING OIL PUMP

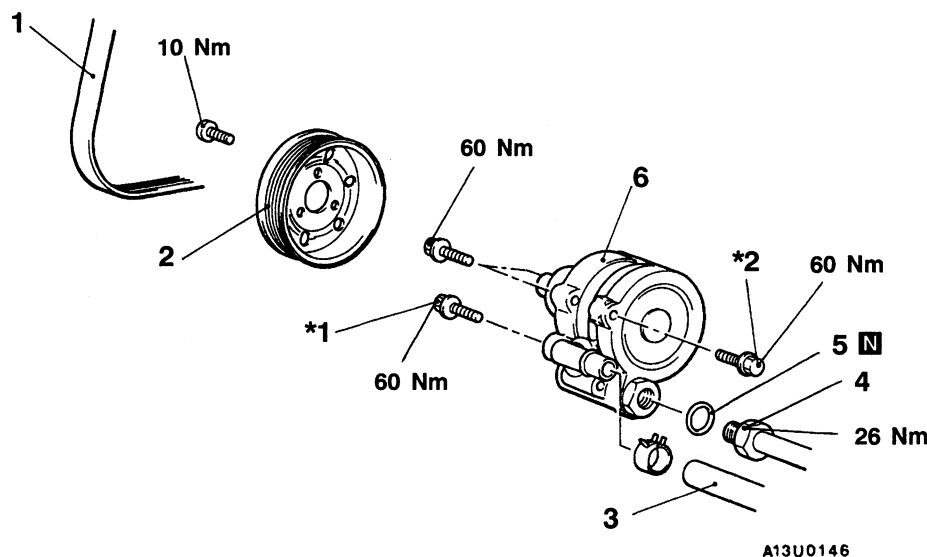
REMOVAL AND INSTALLATION

Pre-removal Operation

- Power Steering Fluid Draining
- Timing Belt Lower Cover Removal (Refer to GROUP 11 - Crankshaft Pulley.)

Post-installation Operation

- Power Steering Fluid Supplying
- Drive-belt Tension Adjusting
- Power Steering Fluid Line Bleeding
- Oil Pump Pressure Check
- Timing Belt Lower Cover Installation (Refer to GROUP 11 - Crankshaft Pulley.)



Removal steps

- Drive belt
- Power steering pump pulley
- Suction hose connection
- Pressure hose connection
- O-ring

6. Oil pump

NOTE

- *1: Vehicles with A/C
*2: Vehicles without A/C

INSPECTION

Check the drive-belt for cracks.
Check the pulley assembly for uneven rotation.

POWER STEERING HOSES

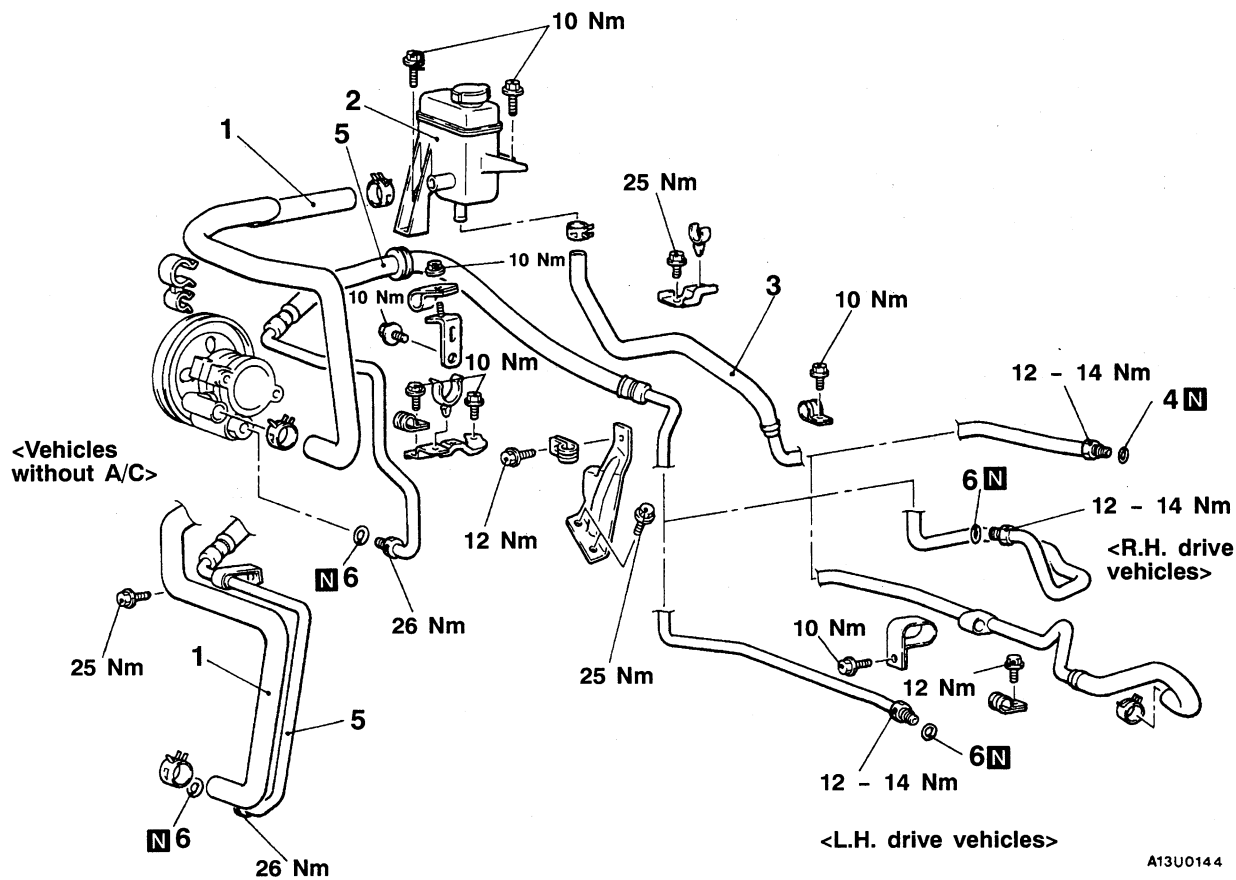
REMOVAL AND INSTALLATION

Pre-removal Operation

- Power Steering Fluid Draining

Post-installation Operation

- Power Steering Fluid Supplying
- Power Steering Fluid Line Bleeding

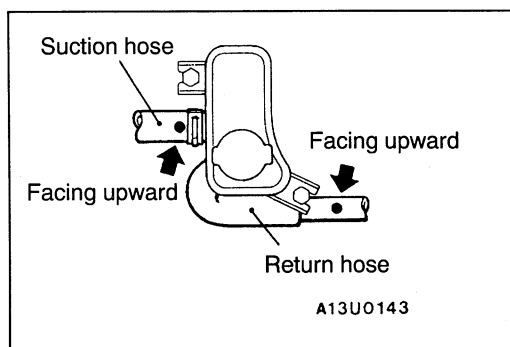


A13U0144

Removal steps

- A◄ 1. Suction hose
 ►A◄ 2. Oil reservoir
 ►A◄ 3. Return hose

4. O-ring
 5. Pressure hose
 6. O-ring

**INSTALLATION SERVICE POINT****►A◄ RETURN HOSE/SUCTION HOSE INSTALLATION**

Connect the hose so that the marking is facing upwards.