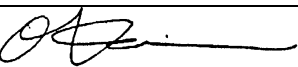




SERVICE BULLETIN

PUBLICATION GROUP, AFTER SALES SERVICE DEP.
MITSUBISHI MOTOR SALES EUROPE BV

SERVICE BULLETIN		No.: ESB-97E13-506		
		Date: 1998-03-31	<Model> (EC,EXP) CARISMA	<M/Y> 97-10
Subject:	CORRECTION TO TIGHTENING TORQUES OF FUEL TANK BAND NUTS			
Group:	FUEL			
CORRECTION	 O. Kai - E.V.P. & G.M. After Sales Service Dept.			

1. Description:

This Service Bulletin informs you of correction to tightening torques of the fuel tank band nuts.

2. Applicable Manuals:

Manual	Pub. No.	Language	Page(s)
'96 CARISMA Workshop Manual chassis	PWDE9502	(English)	13F-2, 3
	PWDS9503	(Spanish)	
	PWDF9504	(French)	
	PWDG9505	(German)	
	PWDD9506	(Dutch)	
	PWDW9507	(Swedish)	
	PWDI96E1	(Italian)	
'97 CARISMA Workshop Manual chassis	PWDE9502-A	(English)	13F-1, 2
	PWDS9503-A	(Spanish)	
	PWDF9504-A	(French)	
	PWDG9505-A	(German)	
	PWDD9506-A	(Dutch)	
	PWDW9507A-	(Swedish)	
	PWDI96E1-A	(Italian)	
'98 CARISMA GDI Workshop Manual chassis	PWDE9502-C	(English)	13F-1
	PWDS9503-C	(Spanish)	
	PWDF9504-C	(French)	
	PWDG9505-C	(German)	
	PWDD9506-C	(Dutch)	
	PWDW9507-C	(Swedish)	
	PWDI96E1-C	(Italian)	

3. Details:

EUR '96 CARISMA Workshop Manual Chassis, page 2, 3
EUR '97 CARISMA Workshop Manual Chassis, page 4, 5
EUR '98 CARISMA Workshop Manual Chassis, page 6

FUEL TANK

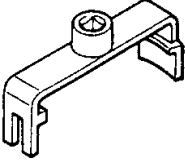
13500010038

GENERAL INFORMATION

- (1) The fuel tank is located under the floor of the rear seats to provide increased safety and a wider luggage space.
- (2) A fuel cut-off valve has been adopted to prevent fuel from leaking out in the event of a collision.
- (3) A plastic fuel tank has been adopted to reduce weight, and improve anti-corrosion effectiveness.

SPECIAL TOOL

13500060026

Tool	Number	Name	Use
	MB996009	Tank cap wrench	Installation of tank cap

<Added>

SEALANTS

Items	Specified sealant	Remarks
Fuel tank	Loctite 222 or 242 or equivalent	—

FUEL TANK

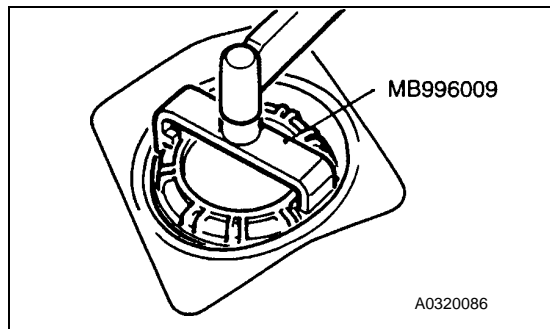
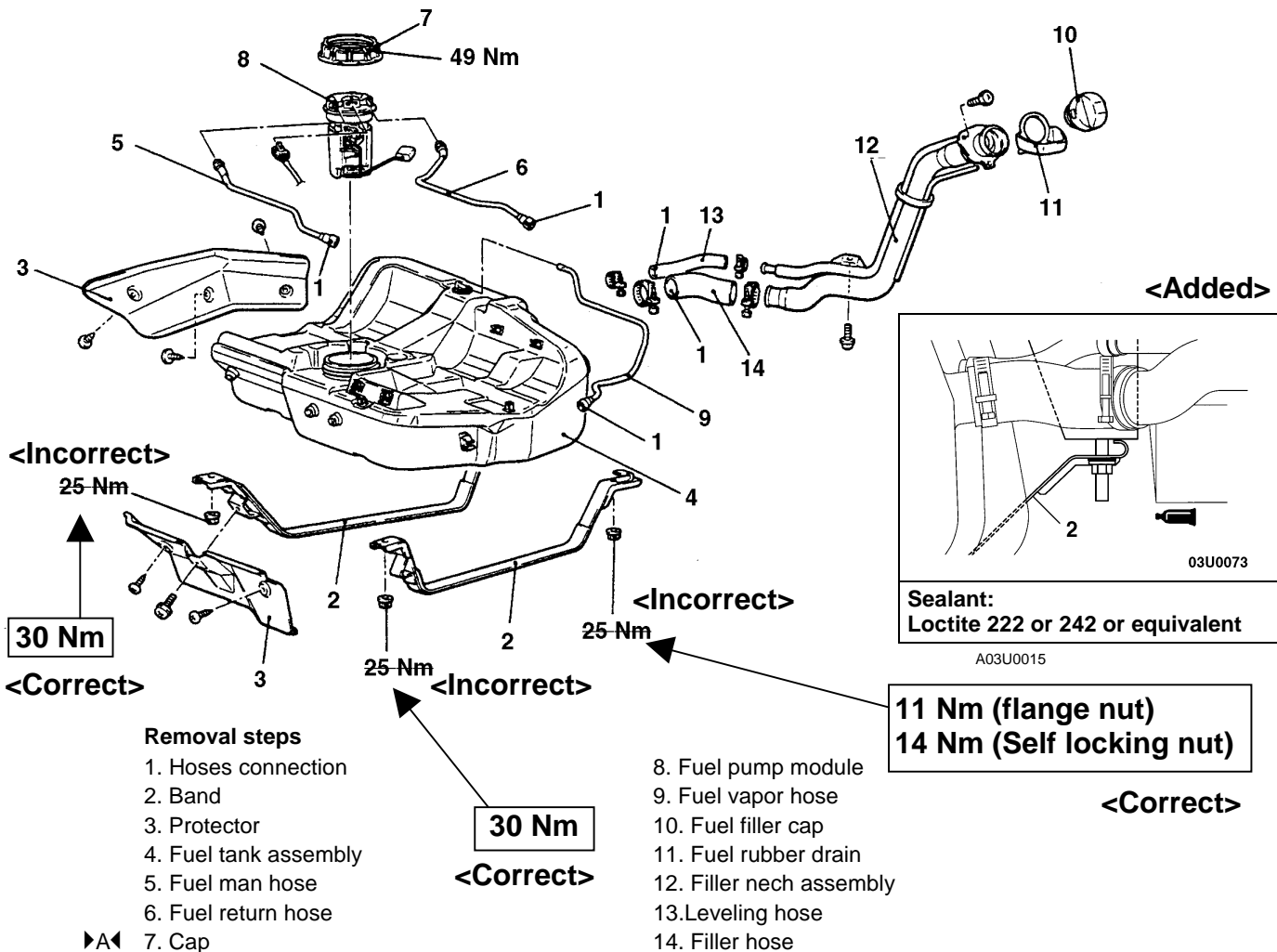
REMOVAL AND INSTALLATION

Pre-removal Operation

- (1) Draining the Fuel
- (2) Reduce the Inner Pressure of Fuel Line and Hose
(Refer to GROUP 13A - On-vehicle Service.)
- (3) Removal of the Center Exhaust Pipe
(Refer to GROUP 15.)

Post-installation Operation

- (1) Installation of Exhaust Pipe (Refer to GROUP 15.)
- (2) Refilling the Fuel
- (3) Checking for Fuel Leaks



INSTALLATION SERVICE POINT

▶ A ◀ CAP INSTALLATION

GROUP 13F

FUEL SUPPLY

GENERAL

OUTLINE OF CHANGES

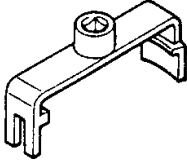
- The following service procedures have been added to the addition of the diesel-powered vehicle.

Applicable models: 1900D

- Removal and installation of the fuel tank
- Removal and installation of the fuel filter

FUEL TANK

SPECIAL TOOL

Tool	Number	Name	Use
	MB996009	Tank cap wrench	Installation of tank cap

<Added>

SEALANTS

Items	Specified sealant	Remarks
Fuel tank	Loctite 222 or 242 or equivalent	—

FUEL TANK

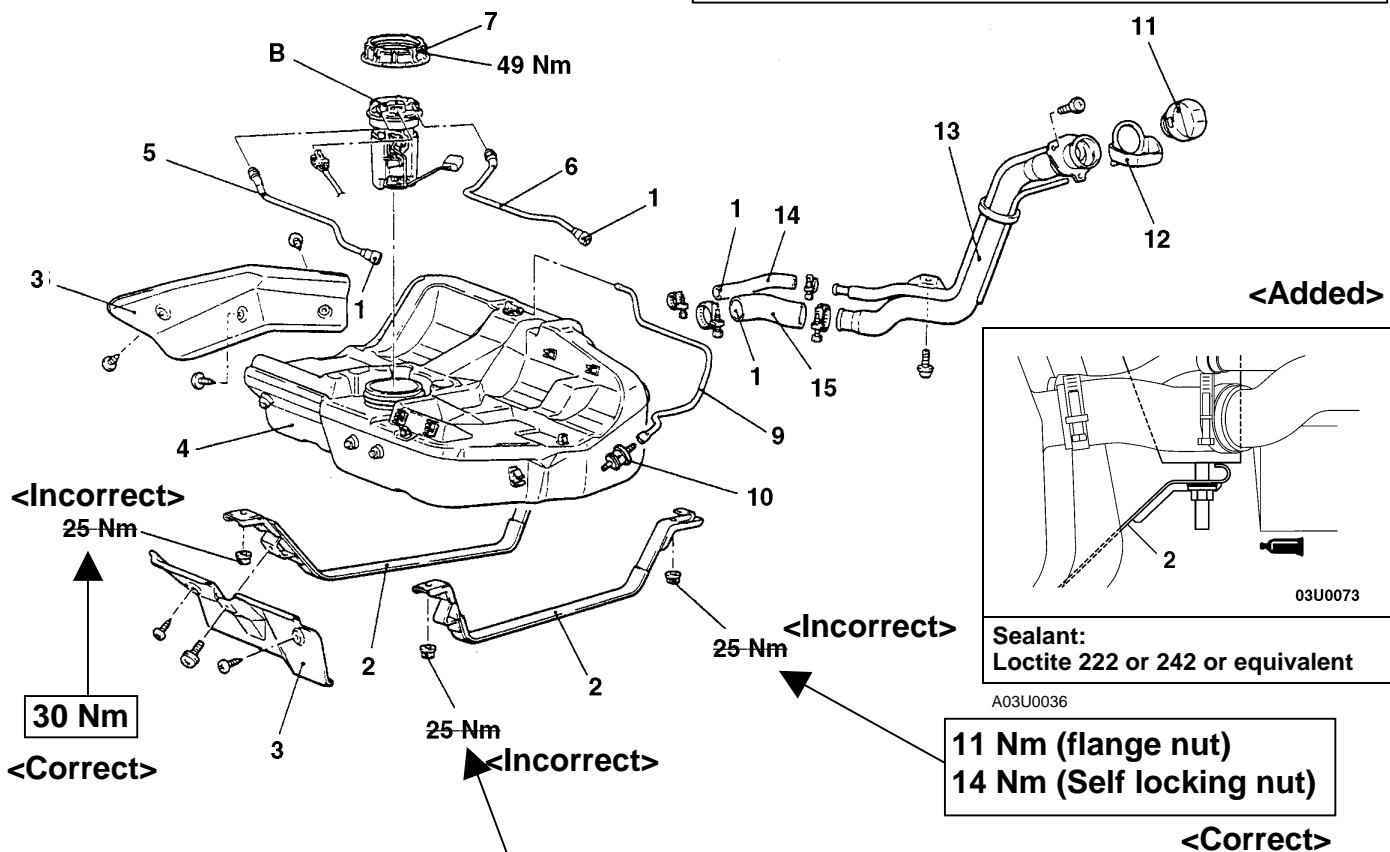
REMOVAL AND INSTALLATION

Pre-removal Operation

- (1) Draining the Fuel
- (2) Removal of the Centre Exhaust Pipe

Post-installation Operation

- (1) Installation of Exhaust Pipe
- (2) Refilling the Fuel
- (3) Checking for Fuel Leaks



Removal steps

1. Hoses connection
2. Band
3. Protector
4. Fuel tank assembly
5. Fuel man hose
6. Fuel return hose
7. Cap

8. Fuel pipe and guage assembly
9. Fuel vapor hose
10. 2 way valve
11. Fuel filler cap
12. Fuel rubber drain
13. Filler neck assembly
14. Filler hose

GROUP 13F FUEL SUPPLY

GENERAL

OUTLINE OF CHANGES

- Maintenance service procedures have been established for items which are different from before to correspond to the following changes.

- Removal and installation of the fuel tank
- Removal and installation of the fuel filler

FUEL TANK

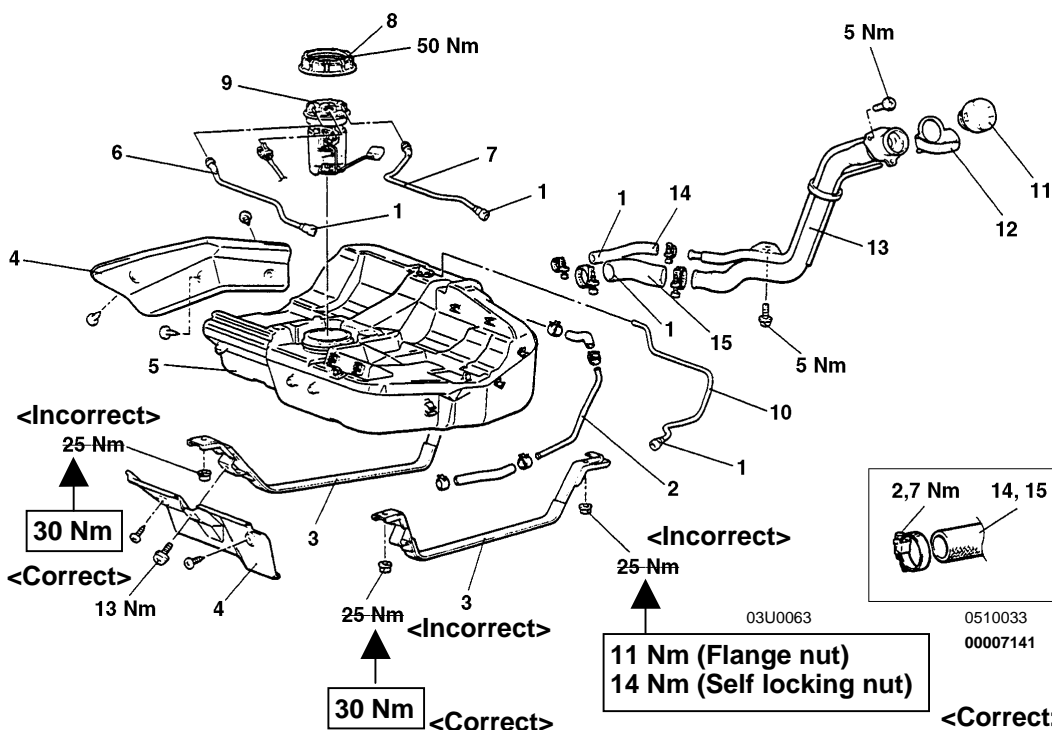
REMOVAL AND INSTALLATION

Pre-removal Operation

- Draining the Fuel
- Reduce the Inner Pressure of Fuel Line and Hose (Refer to GROUP 13A - On-vehicle Service.)
- Removal of the Center Exhaust Pipe (Refer to GROUP 15.)

Post-installation Operation

- Installation of Exhaust Pipe (Refer to GROUP 15.)
- Refilling the Fuel
- Checking for Fuel Leaks



Removal steps

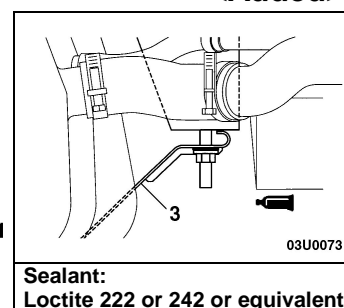
- Hose connection
- Fuel return pipe
- Band
- Protector
- Fuel tank assembly
- Fuel main hose
- Fuel return hoses
- Cap
- Fuel pump module

- Fuel vapour hose
- Fuel filler cap
- Fuel rubber drain
- Fuel neck assembly
- Leveling hose
- Filler hose

NOTE

Removal and installation service points are the same as before

<Added>



SEALANTS

Items	Specified sealant	Remarks
Fuel tank	Loctite 222 or 242 or equivalent	—