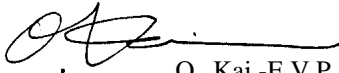




www.WorkshopManuals.co.uk SERVICE BULLETIN

SERVICE GROUP, WARRANTY & SERVICE DEP.
MITSUBISHI MOTOR SALES EUROPE BV

SERVICE BULLETIN	NO.: ESB-96E13-501	
	DATE: 1996-05-15	<MODEL> <M/Y> (EC,EXP)CARISMA 96-00
SUBJECT: CORRECTION OF FUEL GAUGE UNIT INSTALLATION PROCEDURE		
GROUP: FUEL		
INFORMATION:		 O. Kai -E.V.P. After Sales Service

1. Description

This Service Bulletin informs you that the installation procedure for the fuel gauge Unit & pump assembly or the fuel gauge unit & pipe assembly has been corrected.

2. Effective Date:

3. Applicable Manual:

Manual	Pub. No.	Page(s)
'96 CARISMA Workshop Manual	PWDE9502 (English)	13F-3, 13F-5
	PWDS9503 (Spanish)	
	PWDF9504 (French)	
	PWDG9505 (German)	
	PWDD9506 (Dutch)	
	PWDW9507 (Swedish)	
	PWDI96E1 (Italian)	

4. Details:

Please refer to the attached pages.

FUEL TANK

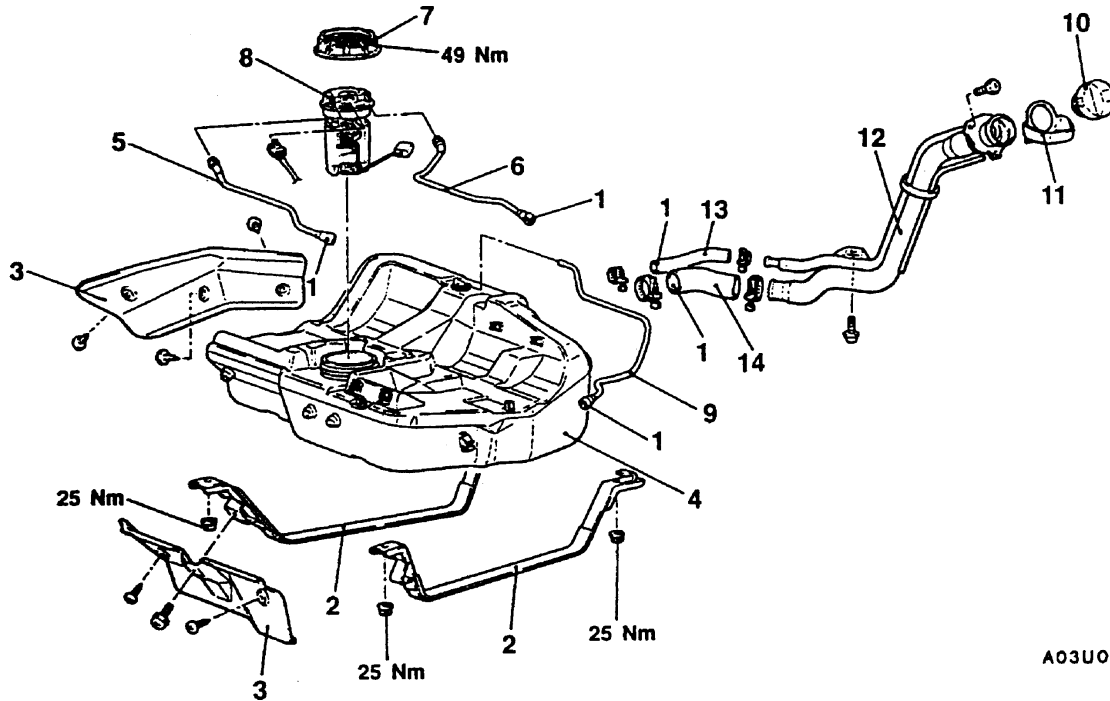
REMOVAL AND INSTALLATION

Pre-removal Operation

- (1) Draining the Fuel
- (2) Reduce the Inner Pressure of Fuel Line and Hose (Refer to GROUP 13A - On-vehicle Service.)
- (3) Removal of the Centre Exhaust Pipe (Refer to GROUP 15.)

Post-Installation Operation

- (1) Installation of Exhaust Pipe (Refer to GROUP 15.)
- (2) Refilling the Fuel
- (3) Checking for Fuel Leaks



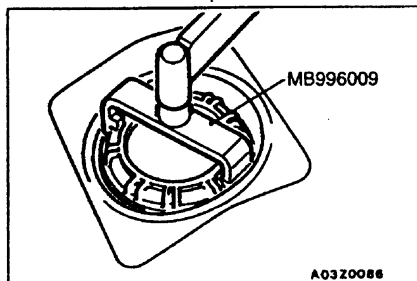
A03U0015

Removal steps

1. Hoses Connection
2. Band
3. Protector
4. Fuel tank assembly
5. Fuel main hose
6. Fuel return hose
7. Cap

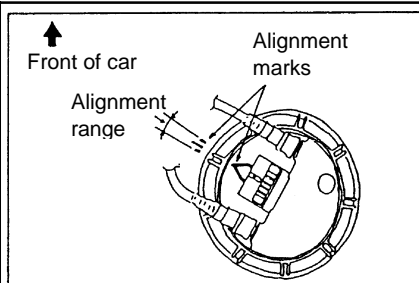
8. Fuel pump module
9. Fuel vapor hose
10. Fuel Filler cap
11. Fuel rubber drain
12. Filler neck assembly
13. Leveling hose
14. Filler hose

▶ A ◀



A03Z0086

<Added>

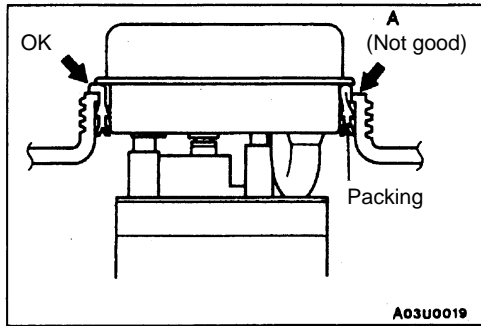


INSTALLATION SERVICE POINT

▶ A ◀ CAP INSTALLATION

Using a special tool tighten the cap to the specified torque so that the alignment mark of the fuel tank and that of the fuel pump module are in alignment. Caution

- When the cap is tightened, use care to prevent the fuel pump module from turning with the cap. If alignment marks are out of alignment, the float will be positioned incorrectly, resulting in improper operation of the fuel remainder warning lamp.



- (5) Check to be sure that the fuel tank packing is not damaged or deformed, and then securely install the packing.

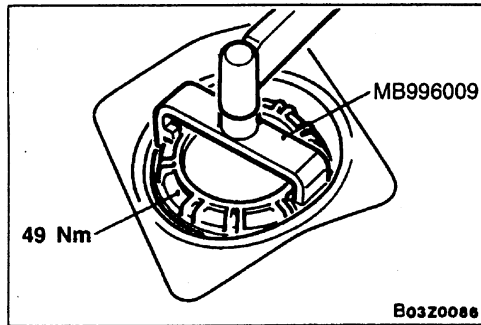
NOTE

If the packing is damaged or deformed, replace with new packing.

- (6) Apply soapy water to the inside of the packing, and then install the fuel pump module.

Caution

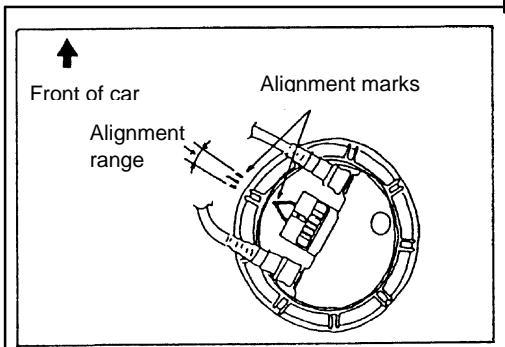
- Do not tilt the fuel pump module when installing.
- The packing should not be folded over as shown by (A) in the illustration



- (7) Using a special tool, tighten the cap to the specified torque so that the alignment mark of the fuel tank and that of the fuel pump module are in alignment.

Caution

- When the cap is tightened, use care to prevent the fuel pump module from turning with the cap. If alignment marks are out of alignment, the float will be positioned incorrectly, resulting in improper operation of the fuel remainder warning lamp.



- (8) Check for leaks from the installation section of the fuel pump module by the following procedure.

1. Apply soapy water to the circumference of the cap.
2. Choke the vapor hose and main hose, apply an internal pressure of 10 kPa or less from the return hose and check to be sure that no bubbles form in the soapy water.

FUEL GAUGE CHECK

Refer to GROUP 54 - Combination Meter.

13500310039

<Changed>