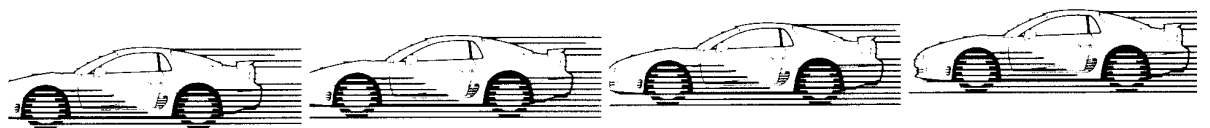
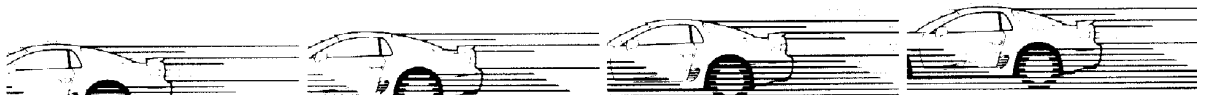
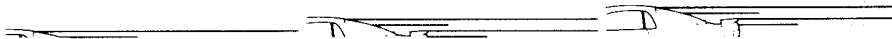
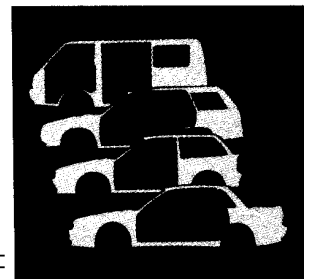




Body Repair Manual

3000GT '93



3000GT

BODY REPAIR MANUAL

FOREWORD

This manual has been prepared for the use of all service mechanics engaged in the body repair service.

Body dimensions, welded panel replacement procedures, body sealing application instructions, and all the other information required to provide quick and accurate body repair service are contained herein. One especially important point is the welding method. All of the vehicle's original strength and durability can be maintained by following the welding procedures contained in this manual.

Note that, in order to maximize the efficiency of the repair work, first, both the extent of the damage and the replacement parts that are needed must be calculated accurately, and then the actual work must be performed accurately and efficiently.

The publications shown on the following page are also available, and should be used in conjunction with this manual.

Mitsubishi Motors Corporation reserves the right to make changes in design and specifications and/or to make additions to or improvements in its products without imposing any obligation upon itself to install them on its products previously manufactured.

GROUP INDEX

GENERAL	0
BODY CONSTRUCTION	1
BODY DIMENSIONS	2
WELDED PANEL REPLACEMENT	3
CORROSION PROTECTION	4
SYNTHETIC-RESIN PARTS	5
BODY COLOUR	6
REFERENCE MATERIAL	8



RELATED PUBLICATIONS

- TECHNICAL INFORMATION MANUAL
Pub. No. PYUE9201
- WORKSHOP MANUAL
CHASSIS GROUP
Pub. No. PWUE9119 (for Europe)
Pub. No. PWUE9203 (for General Export)
ENGINE GROUP
Pub. No. PWEE□ □ □ □ (Looseleaf edition)
ELECTRICAL WIRING
Pub. No. PHUE9201 (for Europe)
Pub. No. PHUE9203 (for General Export)
- PARTS CATALOGUE
Pub. No. B608K402A□ (Vehicles for Europe)
Pub. No. B808K402A□ (Vehicles for General Export)
Pub. No. BFA8K402A1 (Vehicles for Australia)

MANUAL DESCRIPTION

CONTENTS

The first page of this manual contains a table of contents which lists the title and number of each group.

TEXT

The vehicles to which the information in the text pertains are generally designated according to their body classification. In some cases, other limiting designations such as name, type of drive system, etc., are given. If there are no such limiting designations, the information can be assumed to cover all models.

PAGE NUMBERS

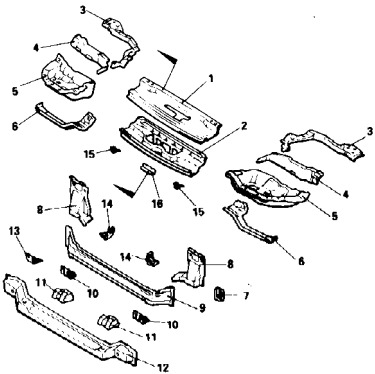

All pages are numbered consecutively within each group. The page numbers can be found on the upper left or right of each page.

SECTION TITLES

The section titles can be found at the upper centre of each page.

NOTE

"GCC" indicates a classification within the models for General Export category: models for countries that are member of the Gulf Cooperation Council.

Group title	Section title	Group No.	Page No.
BODY CONSTRUCTION – Body Construction Characteristics			1-7
FRONT BODY			
Headlamp support			
A structure as shown below is used with the large soft fascia which consists of the front bumper, skirt panel and header panel molded into one unit.		Furthermore, the hood latch opening has a closed cross section to improve strength.	
(1) A large and very rigid front end upper bar is used.		(2) A large headlamp housing is used to improve strength.	
			
<div>1 Front end upper bar</div> <div>2 Hood latch bracket</div> <div>3 Front end upper bar side</div> <div>4 Headlamp housing extension</div> <div>5 Headlamp housing panel</div> <div>6 Upper bar reinforcement side</div> <div>7 Seat belt reinforcement (vehicles for Europe)</div> <div>8 Side member to crossmember brace</div> <div>9 Front end crossmember, inner</div> <div>10 Front air dam reinforcement (LH (vehicles for Europe)</div> <div>11 Radiator bracket</div> <div>12 Front end crossmember, outer</div> <div>13 Front air dam reinforcement (RH (vehicles for Europe)</div> <div>14 Air guide bracket</div> <div>15 Headlamp washer tank upper bracket (vehicles for Europe)</div> <div>16 Plate</div>			
<div>Front end upper bar</div> <div></div> <div>Hood latch bracket</div>			
31P0128			