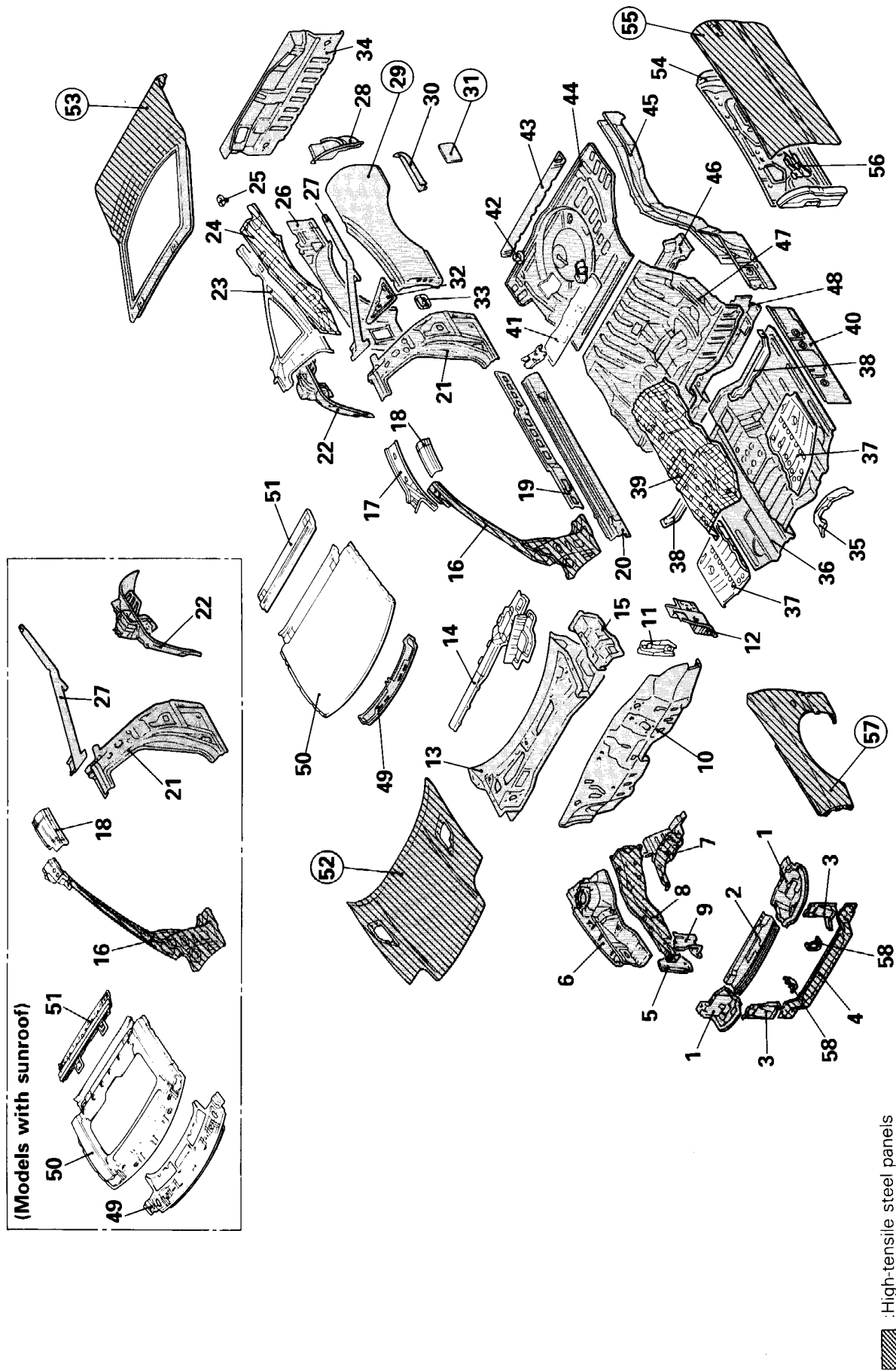


# 1 BODY CONSTRUCTION

1

BODY COMPONENTS.....	1-2
BODY CONSTRUCTION CHARACTERISTICS .....	1-4
BODY MAIN CROSS-SECTIONAL VIEWS .....	1-4
MAINTENANCE, SERVICEABILITY.....	1-6
FRONT BODY.....	1-7
SIDE BODY .....	1-12
REAR BODY .....	1-14
UNDER BODY .....	1-15
ROOF.....	1-18
DOOR .....	1-18
SILENCER APPLICATION LOCATIONS .....	1-19

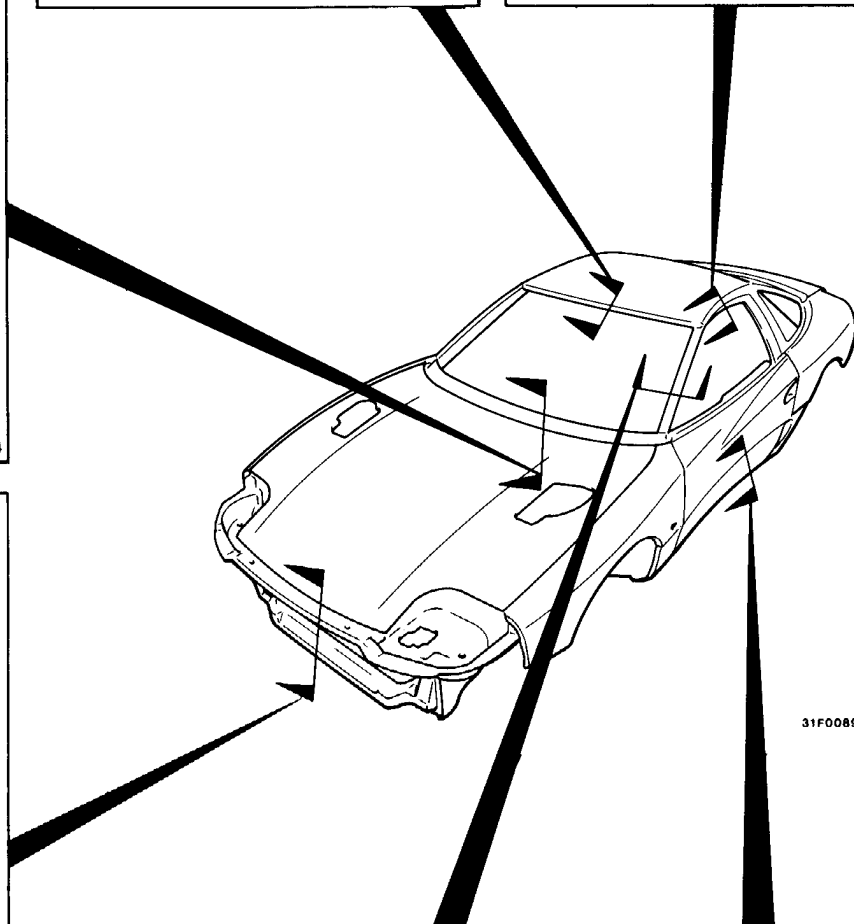
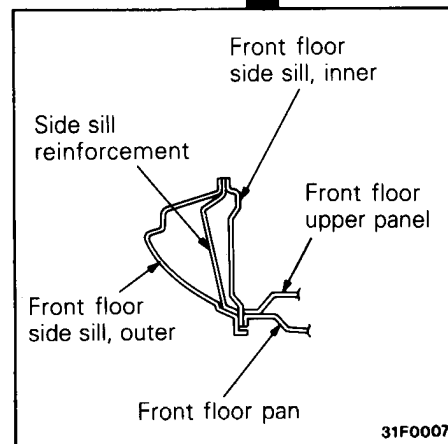
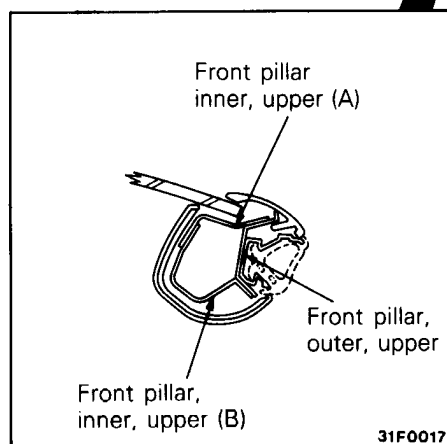
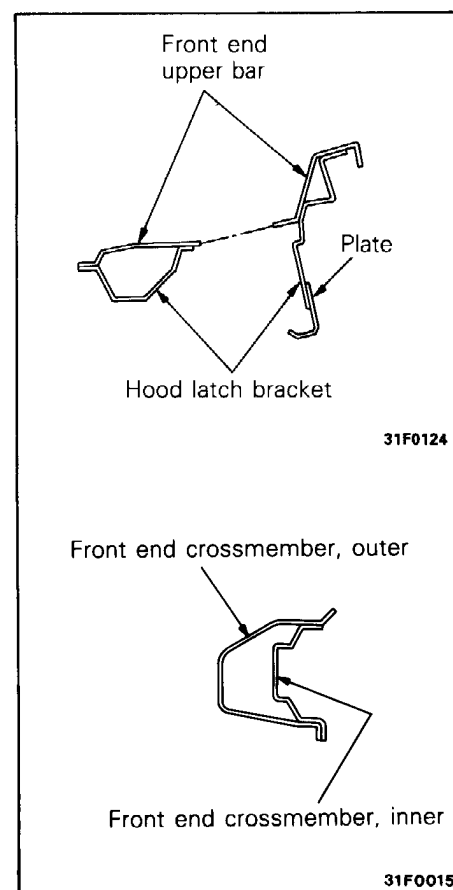
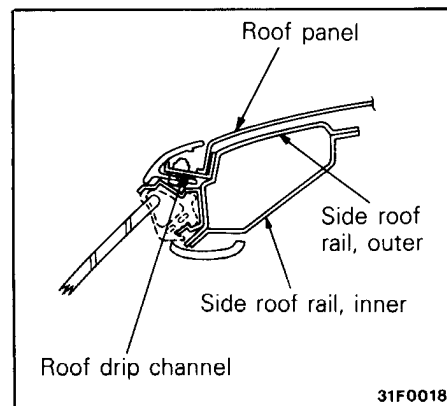
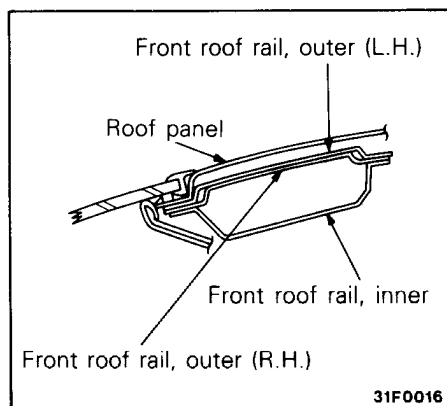
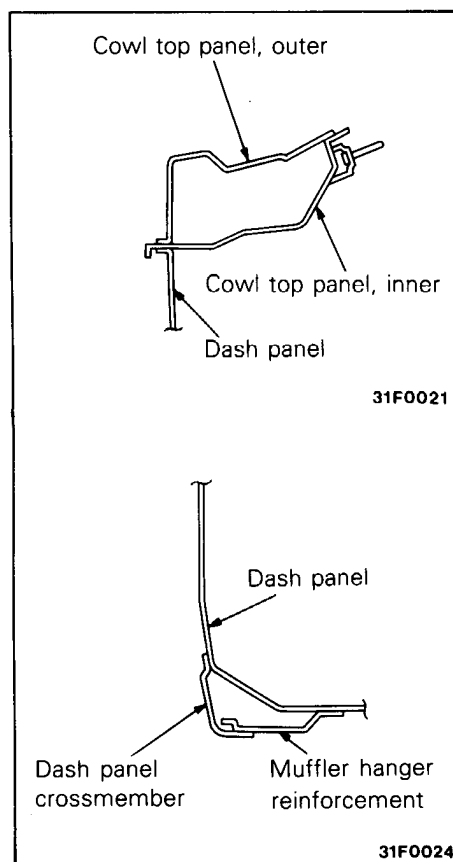
## BODY COMPONENTS

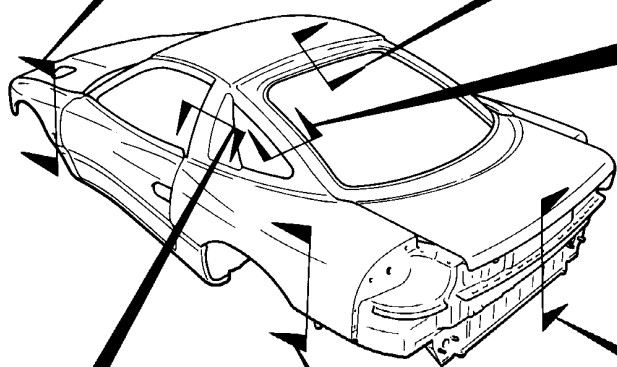
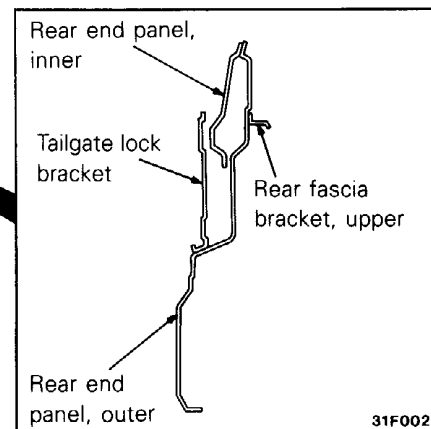
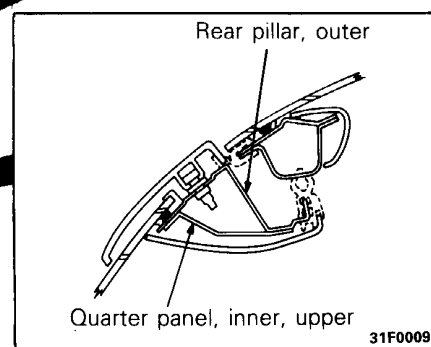
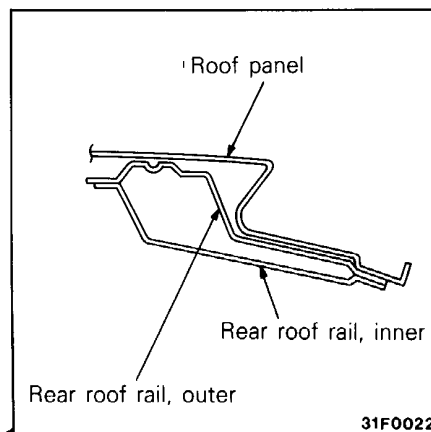
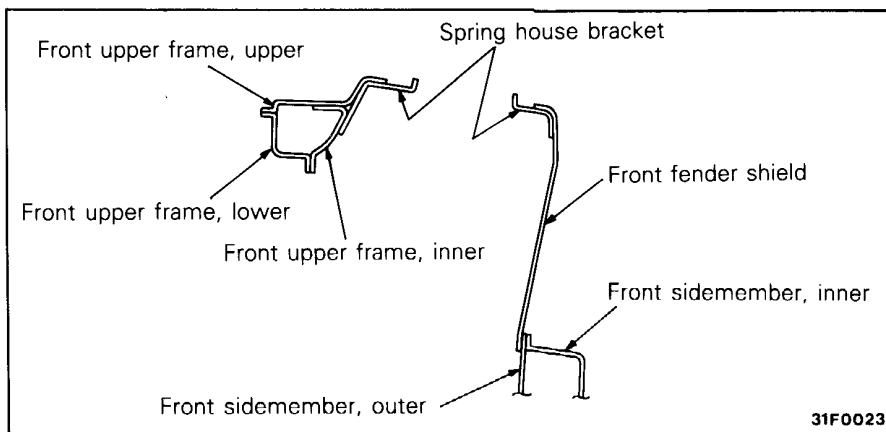


1. Headlamp housing
2. Front end upper bar
3. Front end crossmember brace
4. Front end crossmember
5. Front end gusset, outer
6. Front wheelhouse, inner
7. Front sidemember, rear
8. Front sidemember
9. Front end gusset, inner
10. Dash panel
11. Footrest bracket
12. Front floor side sill, inner, front
13. Cowl top panel
14. Front deck crossmember
15. Front upper frame extension
16. Front pillar
17. Side roof rail, inner
18. Side roof rail, outer
19. Side sill reinforcement
20. Front floor side sill, outer
21. Center pillar, outer
22. Rear wheelhouse panel, inner
23. Quarter panel, inner, upper
24. Beltline reinforcement
25. Drain pipe
26. Quarter panel, inner, lower
27. Rear pillar, outer
28. Rear lamp housing
29. Quarter panel, outer
30. Quarter outer extension, lower
31. Fuel filler panel
32. Center pillar outer extension
33. Seat belt reinforcement
34. Rear end panel
35. Backbone crossmember
36. Front floor pan
37. Front floor plate, upper
38. Front floor crossmember, rear
39. Backbone reinforcement
40. Front floor side sill, inner
41. Rear floor crossmember, upper
42. Spare tyre bracket
43. Rear end crossmember
44. Rear floor pan
45. Rear floor sidemember
46. Rear floor crossmember, lower
47. Rear seat pan
48. Rear seat crossmember
49. Front roof rail
50. Roof panel
51. Rear roof rail
52. Hood panel
53. Tailgate panel
54. Front door panel, inner
55. Front door panel, outer
56. Side door beam
57. Front fender
58. Air guide bracket

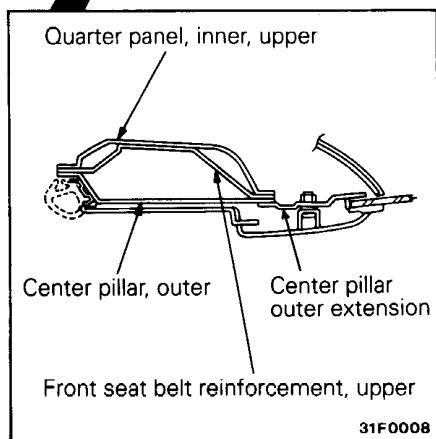
# BODY CONSTRUCTION CHARACTERISTICS

## BODY MAIN CROSS-SECTIONAL VIEWS

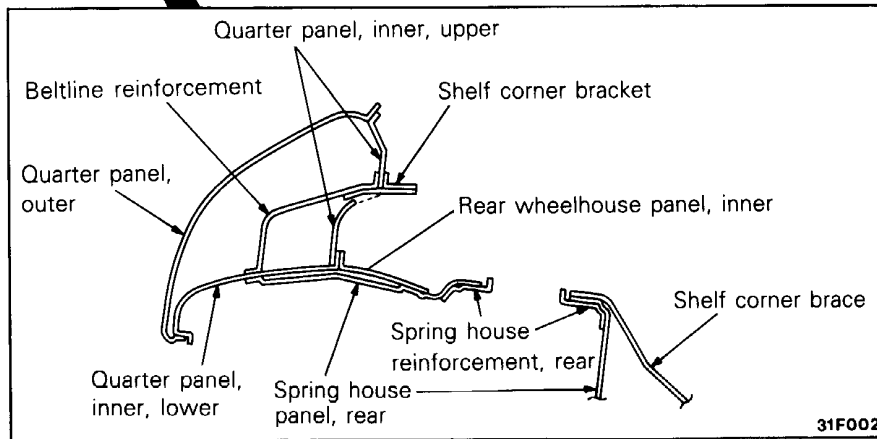




31F0087



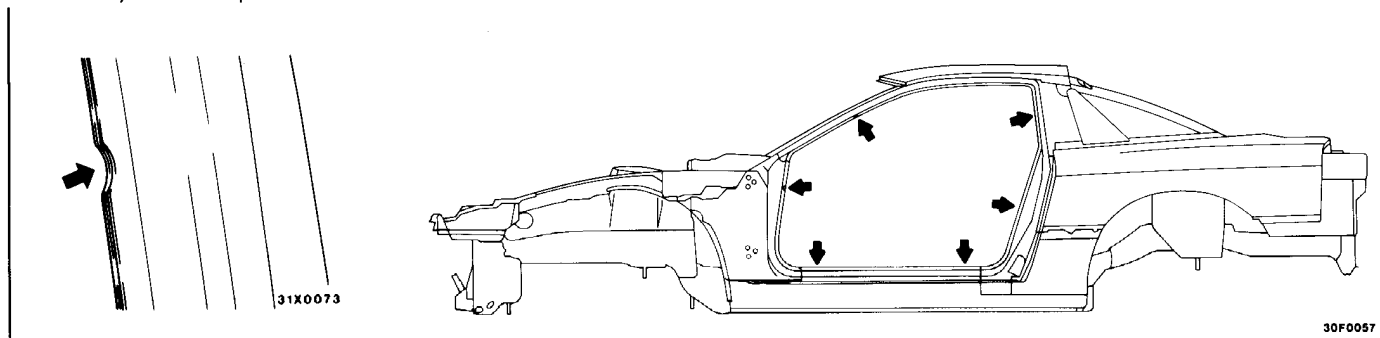
31F0008



31F0025

**MAINTENANCE, SERVICEABILITY****Side Structure**

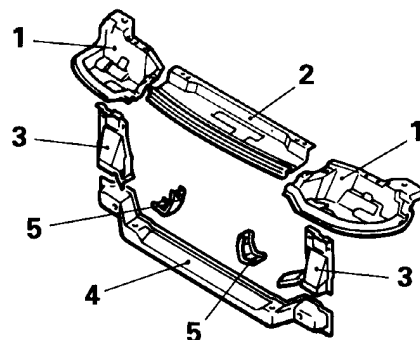
Notches are provided in the door openings for use in aligning panel positions, thus facilitating the assembly of new parts.

**Headlamp Support**

The following supplied shapes are designed to cope with various types of damage.

- Supplied with the assembly  
Front end crossmember  
3+4
- Supplied as single parts  
1, 2, 3, 5

1. Headlamp housing
2. Front end bar, upper
3. Front end brace crossmember
4. Front end crossmember
5. Air guide bracket



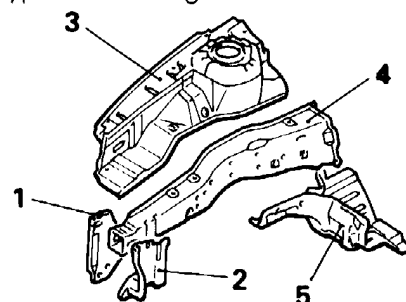
31F0031

**Fender Shield**

The following supplied shapes are designed to cope with various types of damage.

- Supplied with the assembly  
Fender shield  
1+2+3+4+5
- Supplied as single parts  
1, 2, 3, 5

1. Front end gusset, outer
2. Front end gusset, inner
3. Front wheelhouse, inner
4. Front sidemember
5. Front sidemember, rear

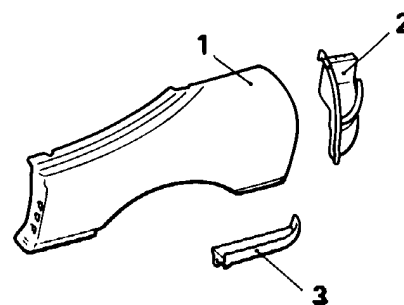


31F0031

**Quarter Panel, Outer**

The following supplied shapes are designed to cope with various types of damage.

- Supplied with the assembly  
Quarter panel, outer  
1+2+3
  - Supplied as single parts  
2, 3
1. Quarter panel, outer
  2. Rear lamp housing
  3. Quarter outer extension, lower



31F0031

## FRONT BODY

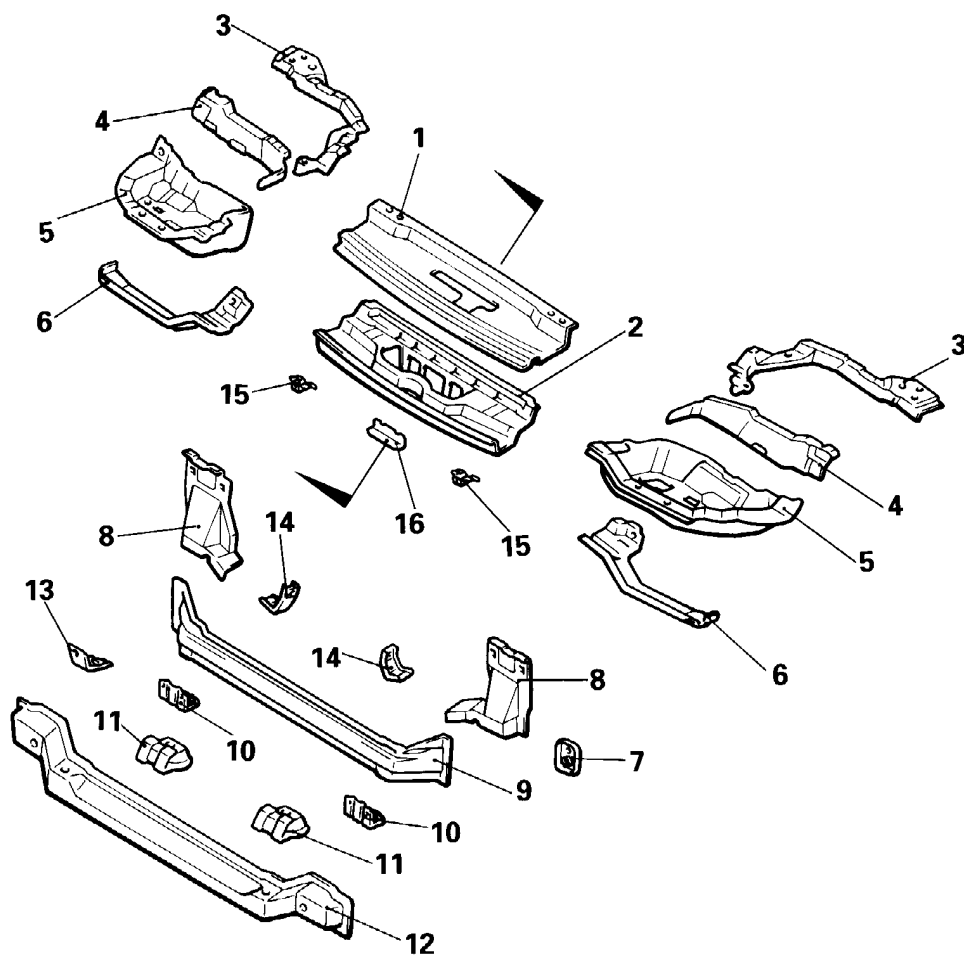
### Headlamp support

A structure as shown below is used with the large soft fascia which consists of the front bumper, skirt panel and header panel molded into one unit.

(1) A large and very rigid front end upper bar is used.

Furthermore, the hood latch opening has a closed cross section to improve strength.

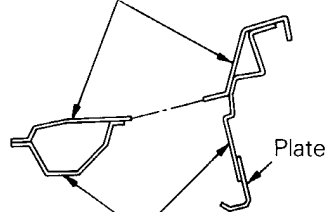
(2) A large headlamp housing is used to improve strength.



1. Front end upper bar
2. Hood latch bracket
3. Front end upper bar, side
4. Headlamp housing extension
5. Headlamp housing panel
6. Upper bar reinforcement, side
7. Reinforcement (vehicles for Europe)
8. Sidemember to crossmember brace
9. Front end crossmember, inner
10. Front air dam reinforcement LH (vehicles for Europe)
11. Radiator bracket
12. Front end crossmember, outer
13. Front air dam reinforcement RH (vehicles for Europe)
14. Air guide bracket
15. Headlamp washer tank upper bracket (vehicles for Europe)
16. Plate

31F0129

Front end upper bar

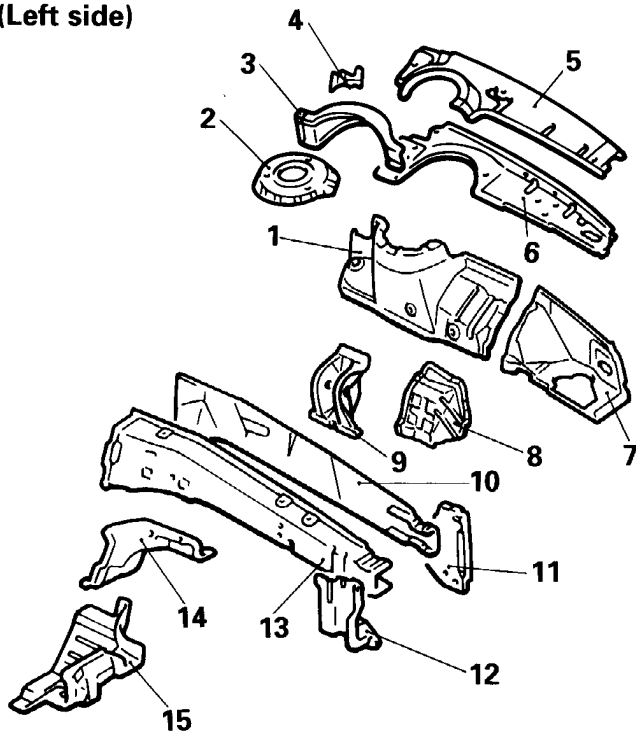


Hood latch bracket

31F0124

## Fender Shield

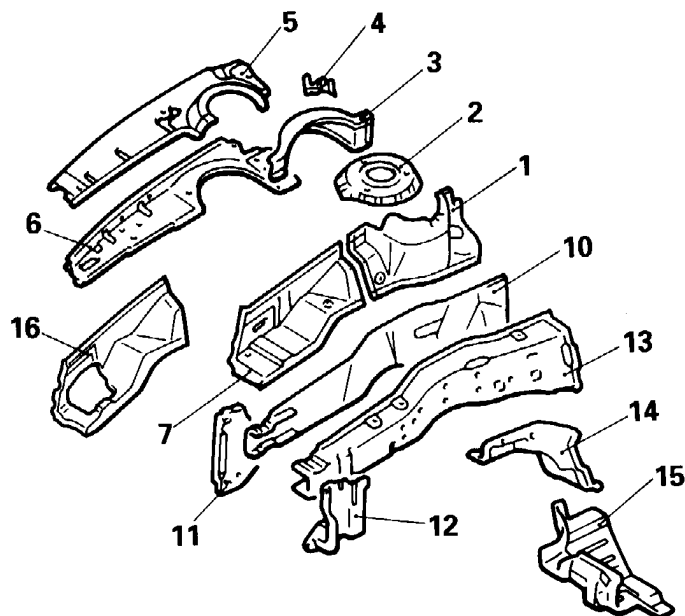
(Left side)



1. Front fender shield
2. Spring house bracket
3. Front upper frame, inner
4. Upper frame extension gusset
5. Front upper frame, upper
6. Front upper frame, lower
7. Front fender shield, front
8. Engine mounting reinforcement
9. Engine mounting bracket
10. Front sidemember, outer
11. Front end gusset, outer
12. Front end gusset, inner
13. Front sidemember, inner
14. Front sidemember reinforcement, rear
15. Front sidemember, rear
16. Front fender shield, front (models with ABS)

31F0137

(Right side)



31V0136

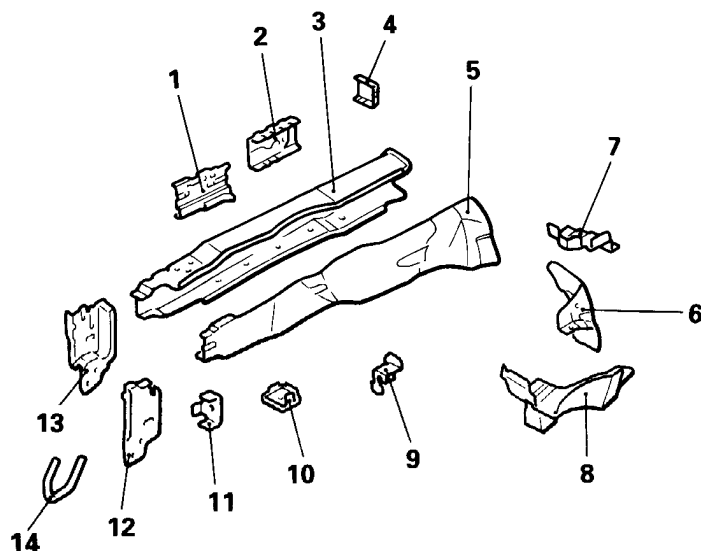


## FRONT SIDEMEMBER REINFORCEMENTS

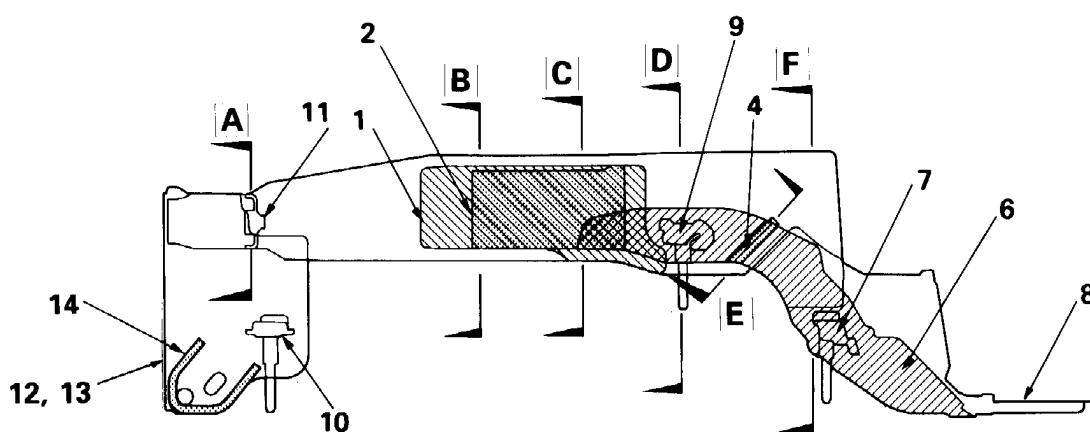
The following reinforcements have been installed to the front sidemember.

### (Left side)

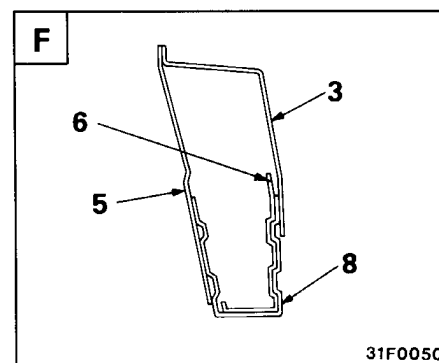
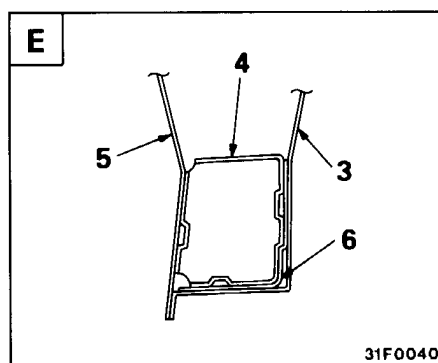
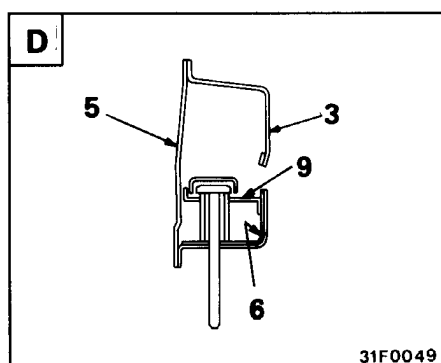
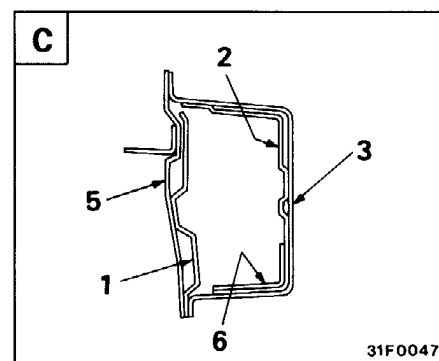
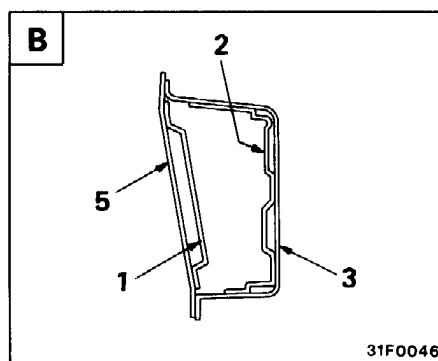
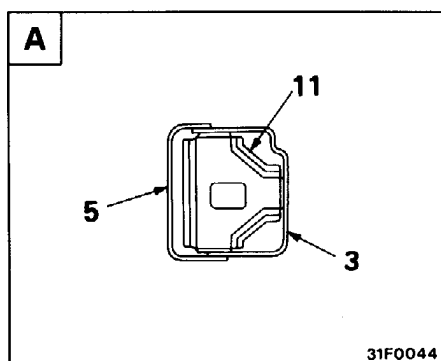
1. Front sidemember reinforcement, outer
2. Front sidemember reinforcement, front
3. Front sidemember, inner
4. Front sidemember bulkhead
5. Front sidemember, outer
6. Front sidemember reinforcement, rear
7. Pipe support, rear
8. Front sidemember, rear
9. Pipe support, front
10. Pipe support
11. Absorber bracket
12. Front end gusset, outer
13. Front end gusset, inner
14. Front hook reinforcement



31F0134

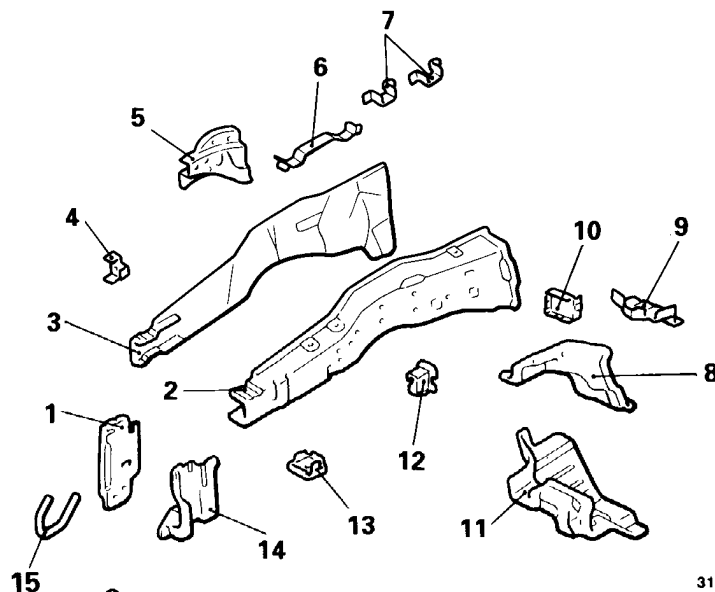


31F0130

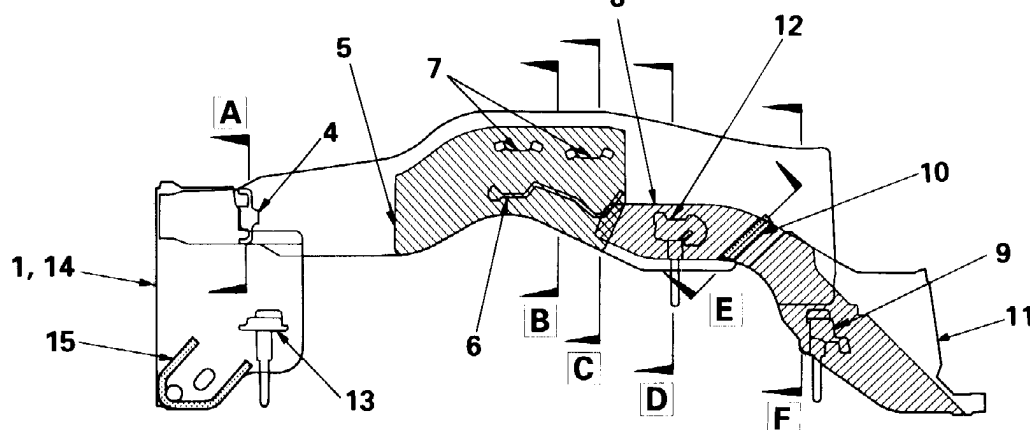


## (Right side)

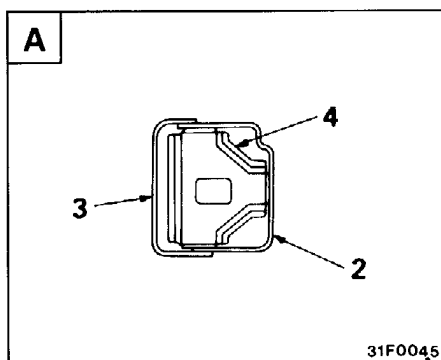
1. Front end gusset, outer
2. Front sidemember, inner
3. Front sidemember, outer
4. Absorber bracket
5. Front sidemember reinforcement, front
6. Bolt guide plate
7. Bolt guide plate, rear
8. Front sidemember reinforcement, rear
9. Pipe support, rear
10. Front sidemember bulkhead
11. Front sidemember, rear
12. Pipe support, front
13. Pipe support
14. Front end gusset, outer
15. Front hook reinforcement



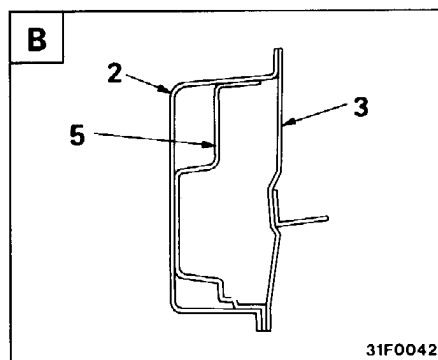
31F0133



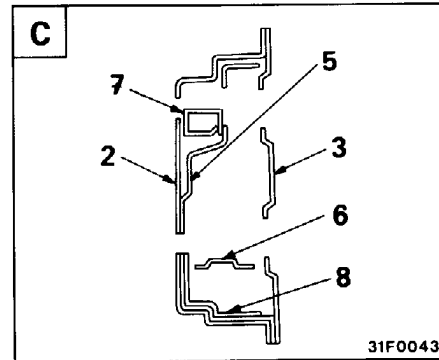
31F0131



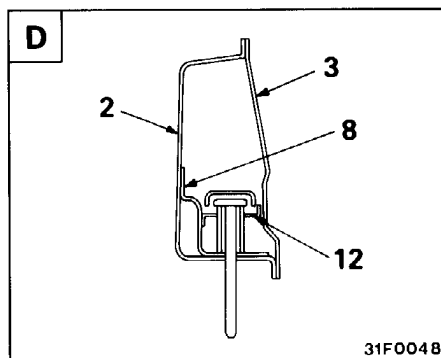
31F0045



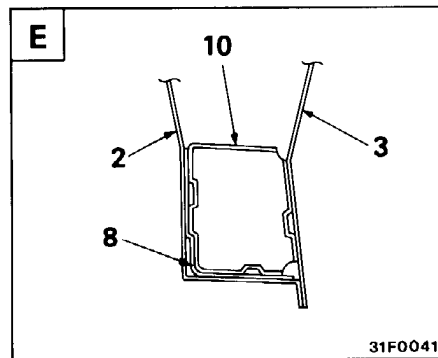
31F0042



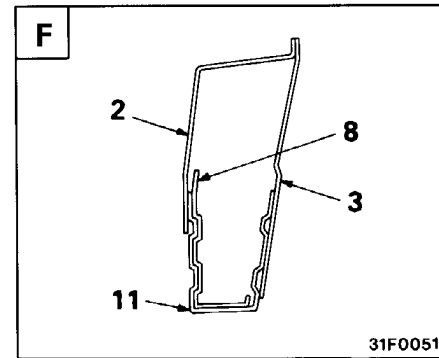
31F0043



31F0048

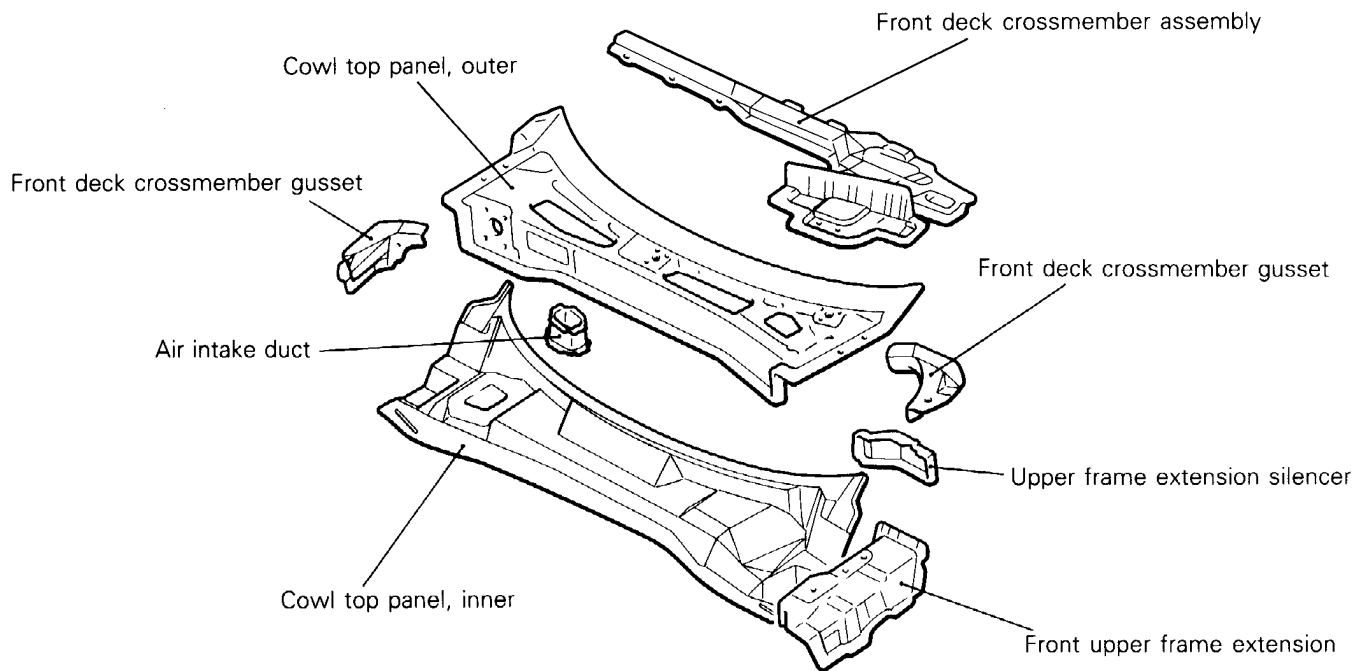


31F0041



31F0051

**Front Deck**

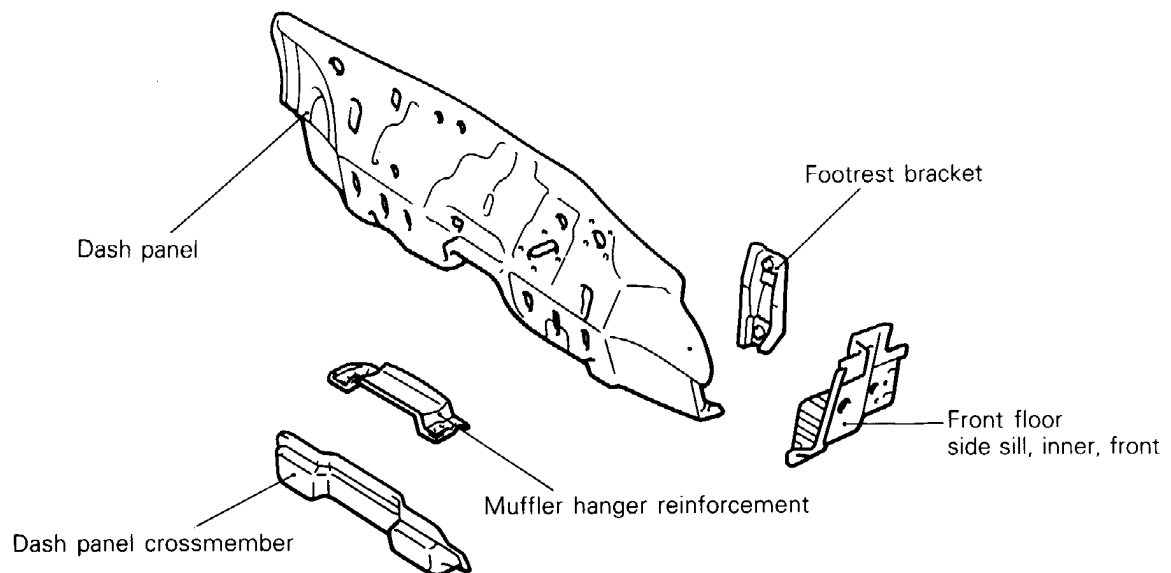


31F0103

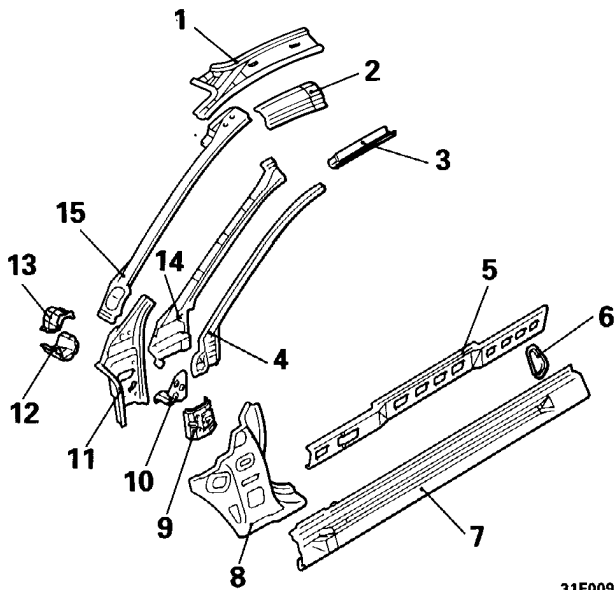
**Dash Panel**

The dash panel is not a double-walled structure consisting of the dash panel and dash panel reinforcement as in former models but is made

from a single thick plate. The engine compartment has effectively expanded while preserving rigidity.

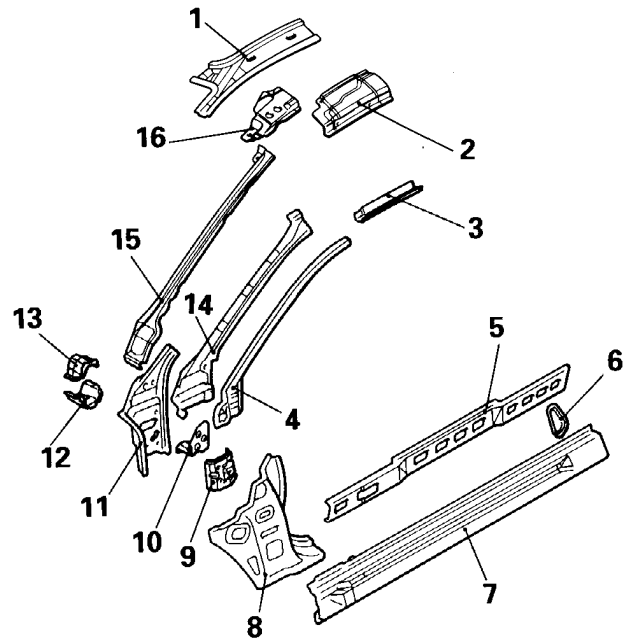


31F0096

**SIDE BODY****Front Side Structure****(Models with standard roof)**

31F0094

1. Side roof rail, inner
2. Side roof rail, outer
3. Roof drip channel
4. Front pillar, outer, upper
5. Side sill reinforcement
6. Side sill silencer
7. Front floor side sill, outer
8. Front pillar, outer, lower
9. Front door hinge reinforcement, lower

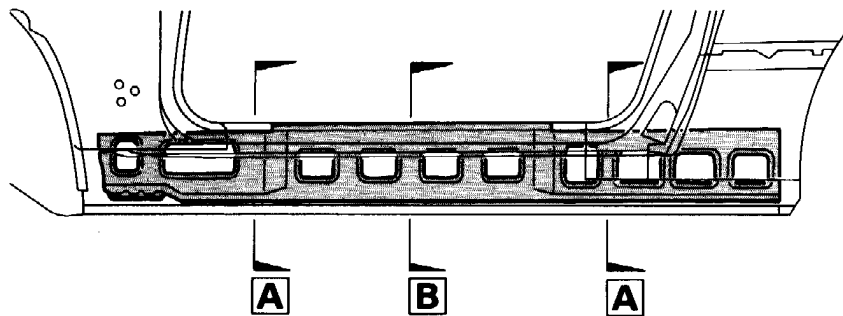
**(Models with sunroof)**

31F0117

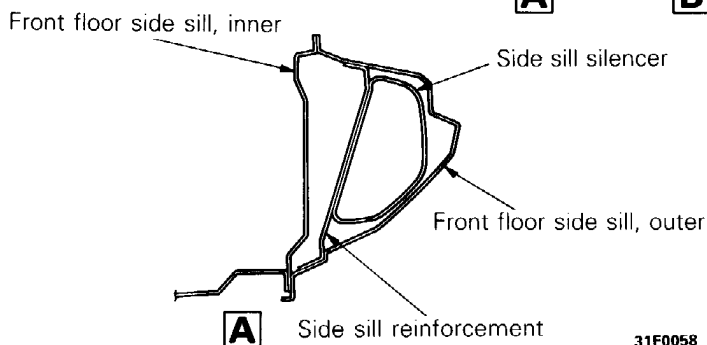
10. Hinge reinforcement, upper
11. Front pillar, inner, lower
12. Front deck crossmember support, lower
13. Front deck crossmember support, upper
14. Front pillar, inner, upper (B)
15. Front pillar, inner, upper (A)
16. Front pillar extension

**Side Sill**

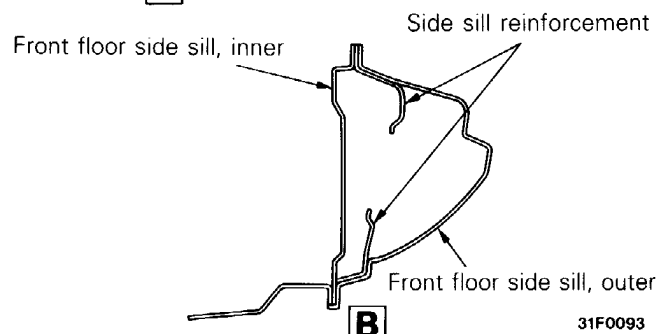
- (1) Large one-piece side sill reinforcement is used to improve body rigidity and crash characteristics.
- (2) Sound absorption is improved by the use of a side sill silencer.



31F0081



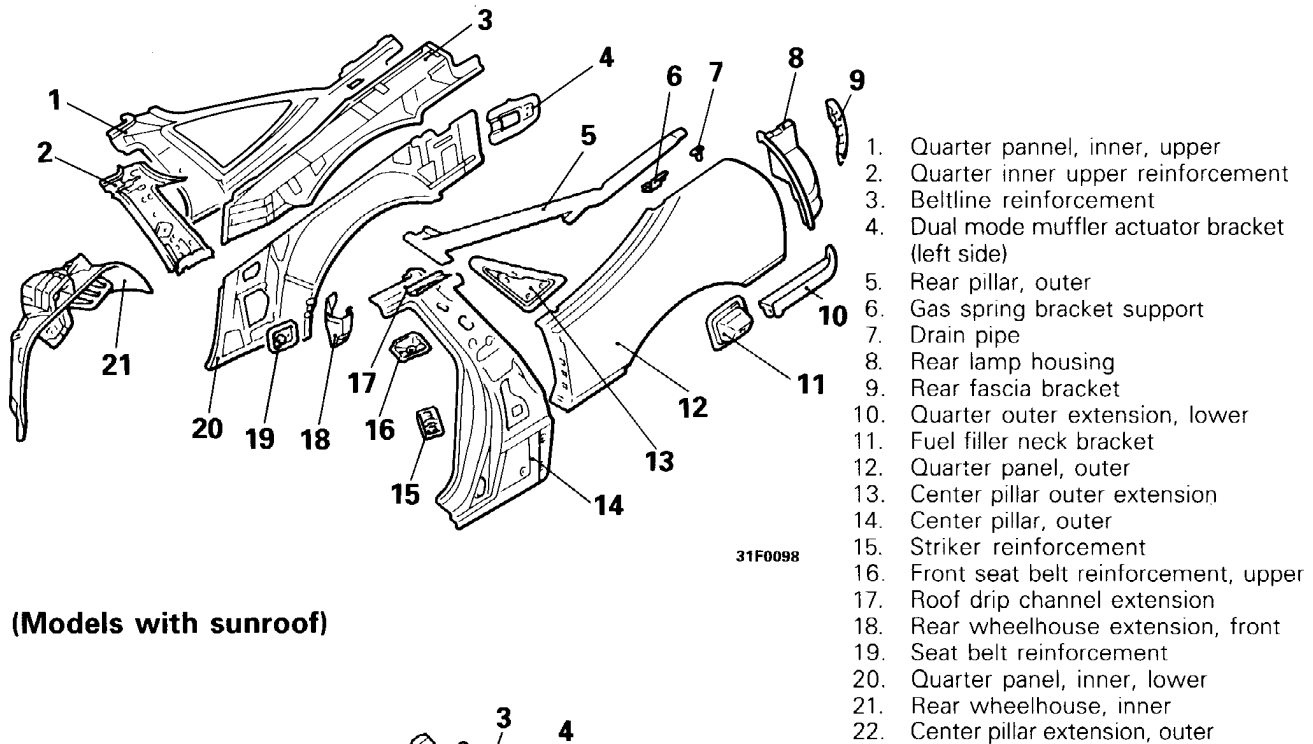
31F0058



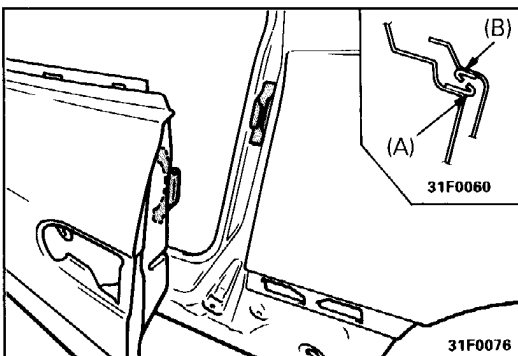
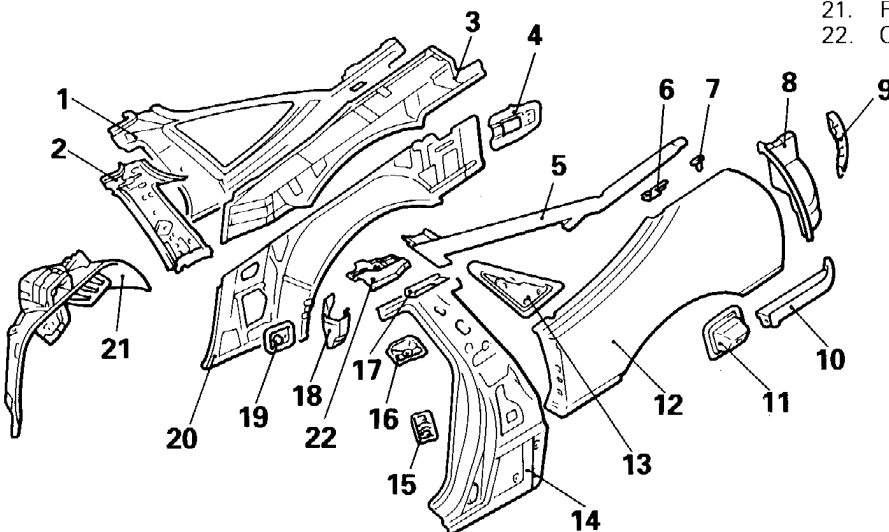
31F0093

Rear Side Structure

(Models with standard roof)



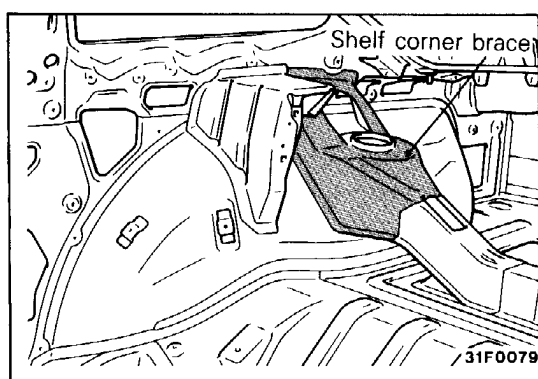
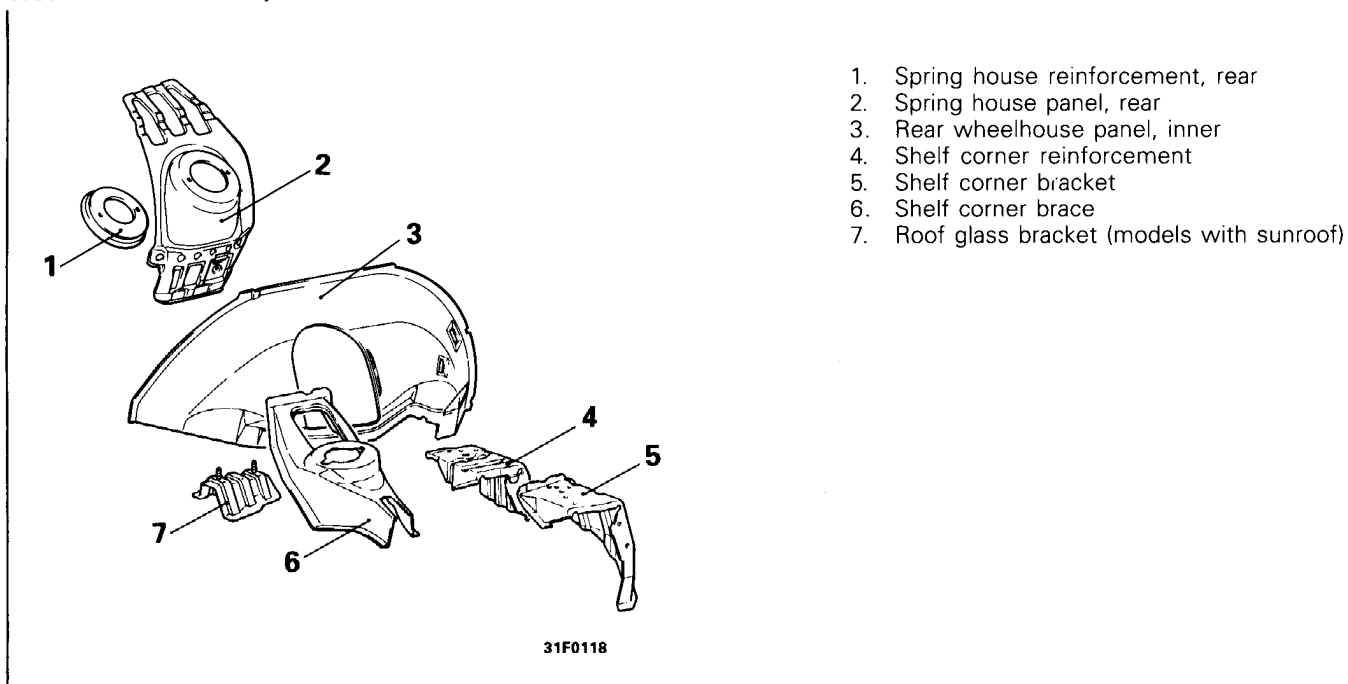
(Models with sunroof)



Center pillar

There are safety hook (B) on the center pillar and safety hook (A) on the door to prevent the door from being pushed in when there is an impact from the side. This is to protect the passengers.

## Rear Wheelhouse, Inner

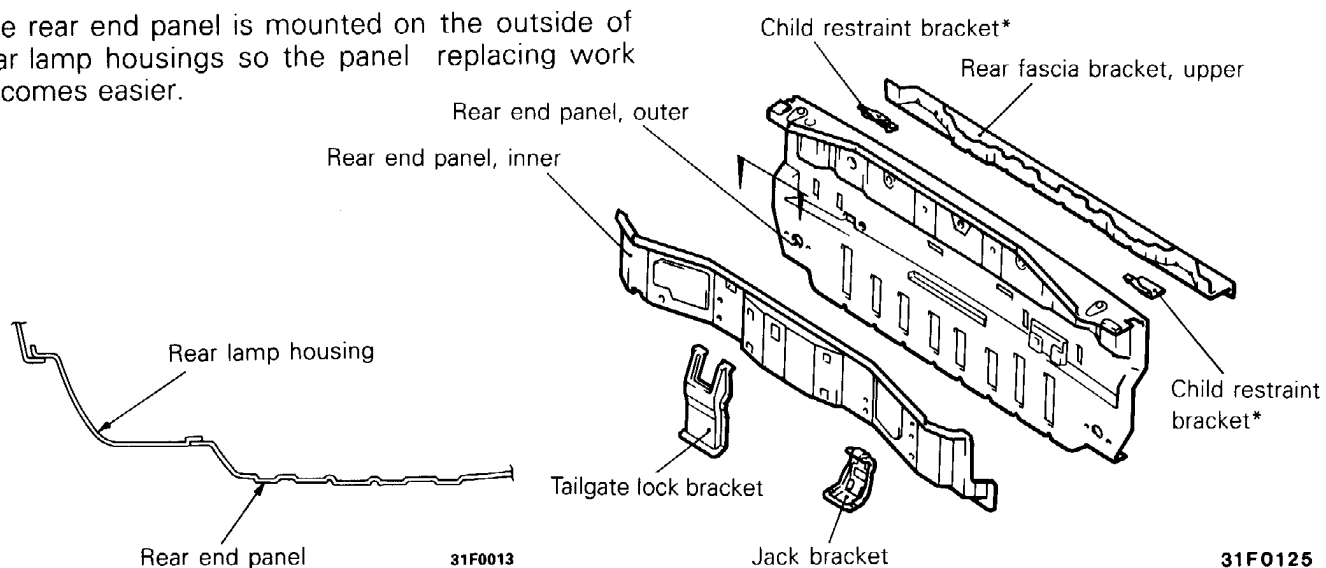


The shelf corner brace is connected to the side body and rear floor, and held rigidly on strut assembly mounting.

## REAR BODY

## Rear End Panel

The rear end panel is mounted on the outside of rear lamp housings so the panel replacing work becomes easier.



\* : Vehicles for Australia

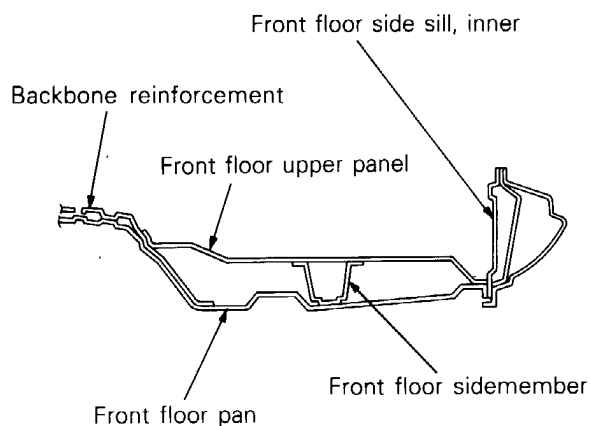
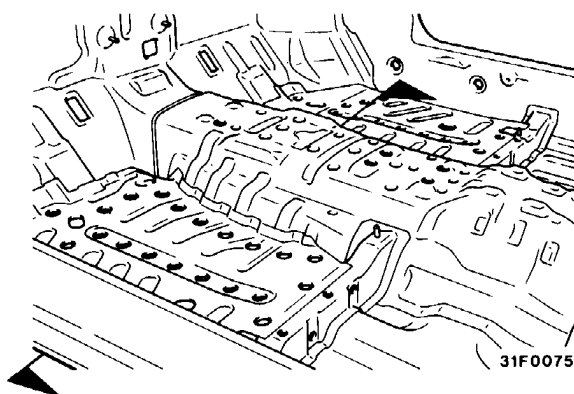
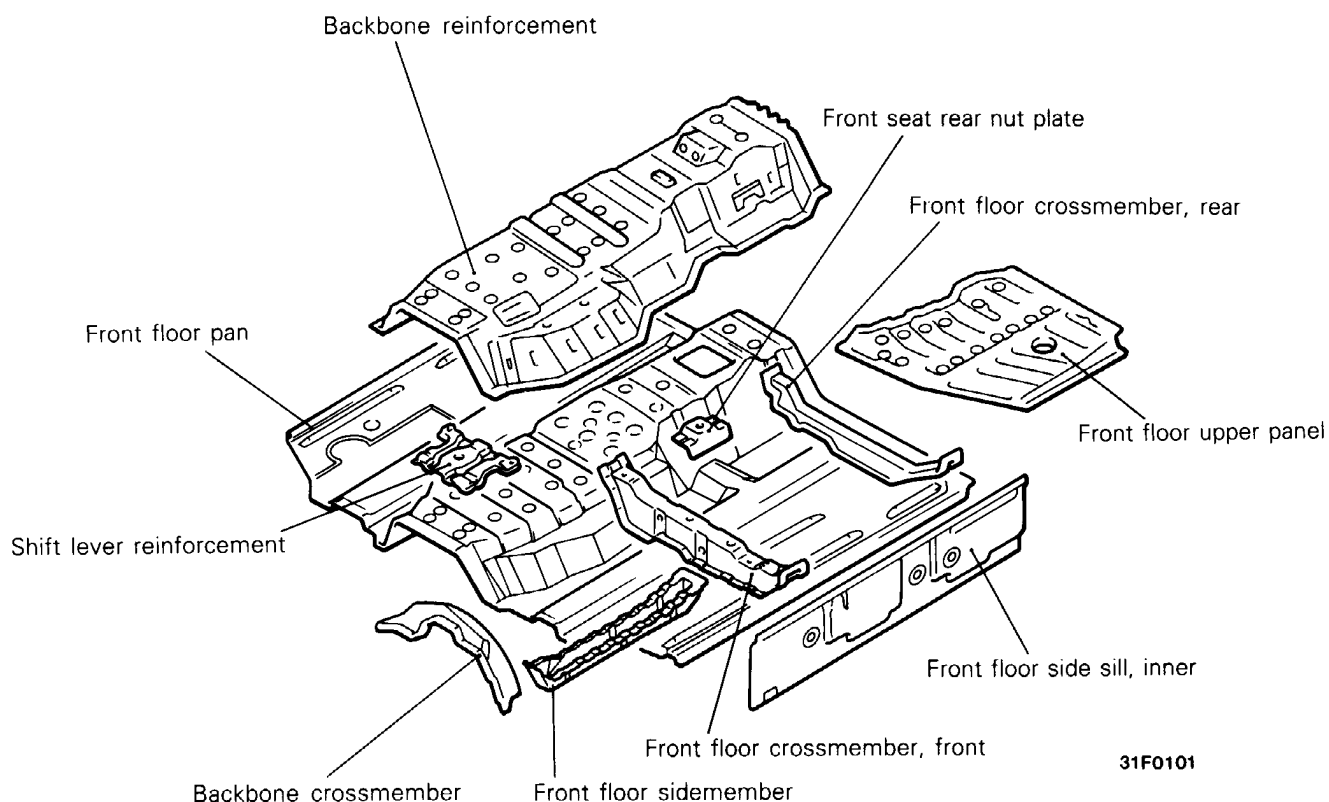
**UNDER BODY**

**Front Floor**

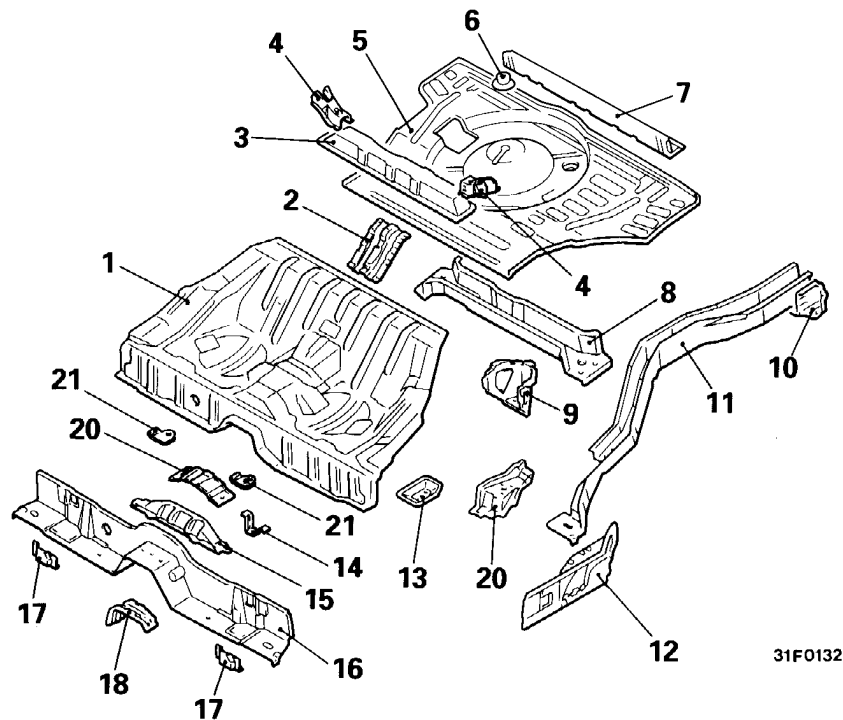
A double-floor structure is adopted and this not only improves rigidity but also reduces air resistance because of the flatness of the floor's bottom surface.

- (1) A very rigid, double-layer floor is used with a front floor sidemember on the upper surface of the front floor and also a front floor upper panel on top.

- (2) There is large, integrated backbone reinforcement on the upper surface of the front floor to improve rigidity.
- (3) The number of beads in the front floor pan are reduced to make the bottom surface of the floor flat.



## Rear Floor

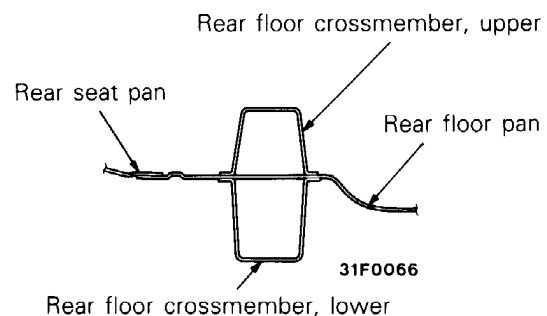
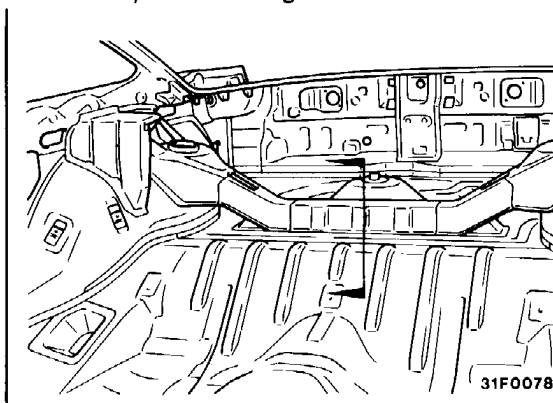


31F0132

- |   |   |
|---|---|
| 1. Rear seat pan                          | 12. Rear floor side sill                      |
| 2. Split seat bracket                     | 13. Sidemember seat belt bracket              |
| 3. Rear floor crossmember, upper          | 14. Heat protector panel bracket              |
| 4. Rear floor crossmember upper extension | 15. Rear seat pan reinforcement, front        |
| 5. Rear floor pan                         | 16. Rear seat crossmember                     |
| 6. Spare tyre bracket                     | 17. Tie down reinforcement                    |
| 7. Rear end crossmember                   | 18. Propeller shaft bracket, rear             |
| 8. Rear floor crossmember, lower          | 19. Rear floor seat belt reinforcement        |
| 9. Fuel tank support, front               | 20. Rear floor sidemember extension, front    |
| 10. Rear floor sidemember extension, rear | 21. Plate (vehicles for Europe and Australia) |
| 11. Rear floor sidemember                 |   |

## REAR FLOOR CROSSMEMBER, UPPER

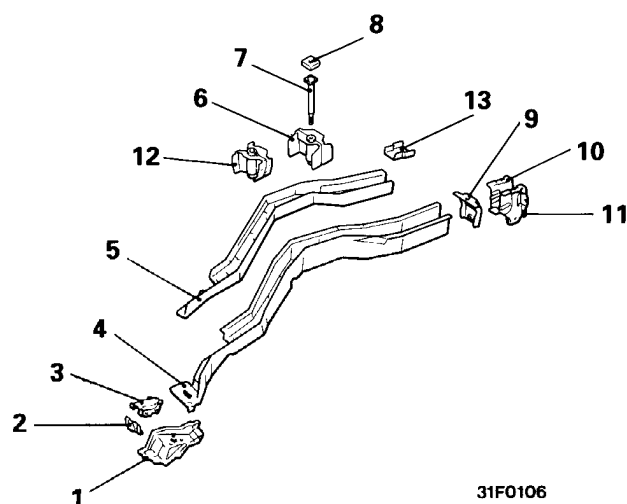
The rear floor crossmember (upper) forms a large closed section in the rear floor pan. High rigidity is assured by connecting this rear floor crossmember (upper) with the side body.



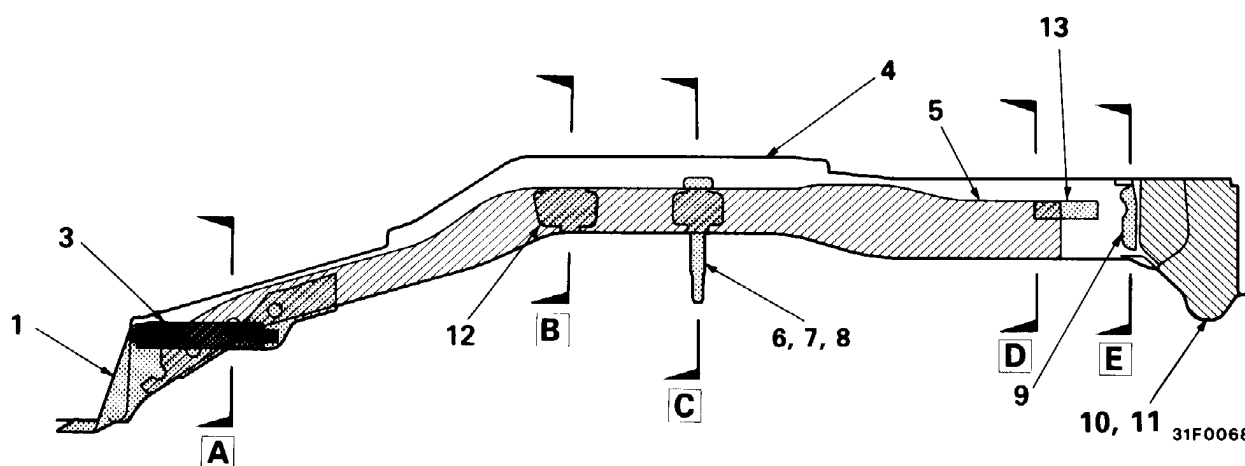


REAR FLOOR SIDEMEMBER REINFORCEMENTS

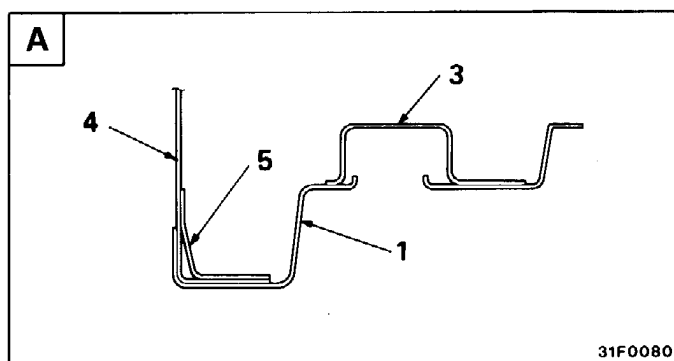
1. Rear floor sidemember extension, front
2. Tie down reinforcement
3. Rear suspension crossmember bracket
4. Rear floor sidemember
5. Rear floor sidemember reinforcement
6. Differential mount bulkhead assembly
7. Square head bolt
8. Retainer
9. Rear floor sidemember bulkhead, rear
10. Rear floor sidemember extension, rear, inner
11. Rear floor sidemember extension, rear, outer
12. Suspension support bulkhead assembly, front
13. Bulkhead



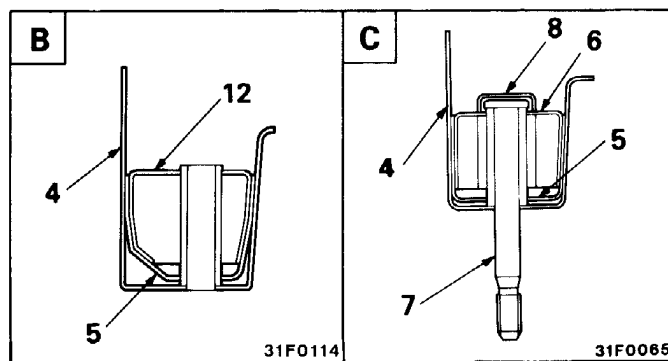
31F0106



31F0068

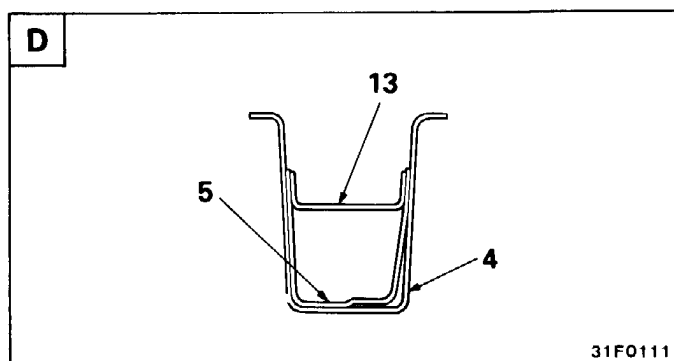


31F0080

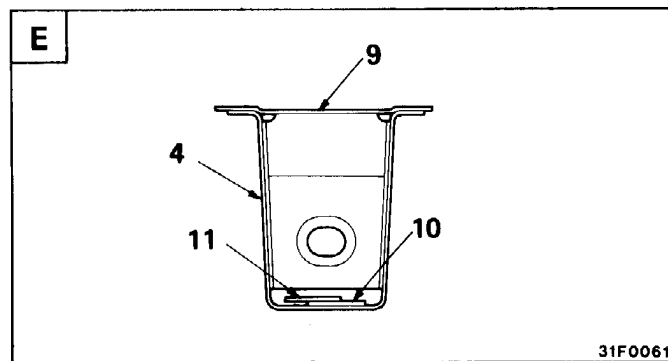


31F0114

31F0065



31F0111

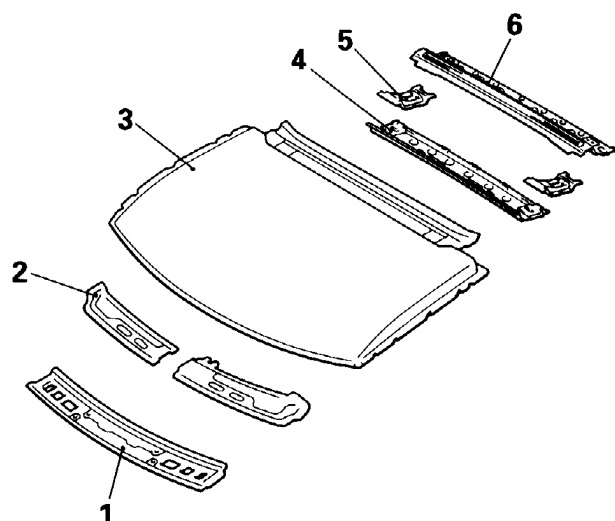


31F0061

## ROOF

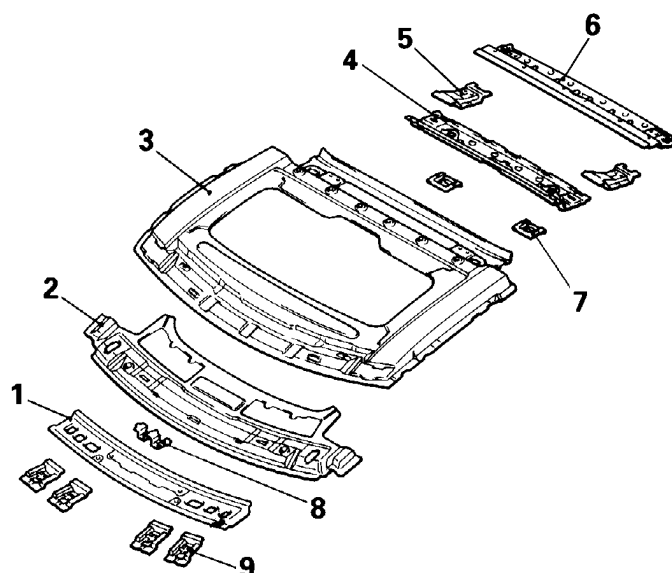
A construction without the roof bow has been achieved by making the roof surface small and increasing the camber.

### (Standard roof)



31F0091

### (Sunroof)



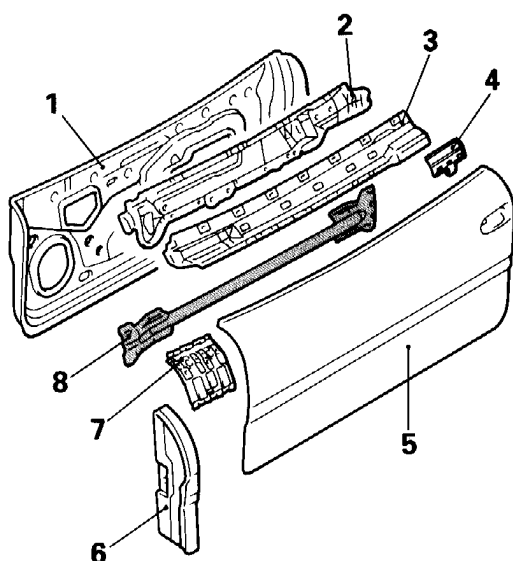
31F0115

1. Front roof rail, inner
2. Front roof rail, outer
3. Roof panel
4. Rear roof rail, inner
5. Tailgate hinge reinforcement

6. Rear roof rail, outer
7. Rear roof rail reinforcement
8. Room lamp bracket
9. Front roof rail reinforcement

## DOOR

In order to provide increased passenger safety in the event of a side collision, a side door beam is provided inside the door.



31F0092

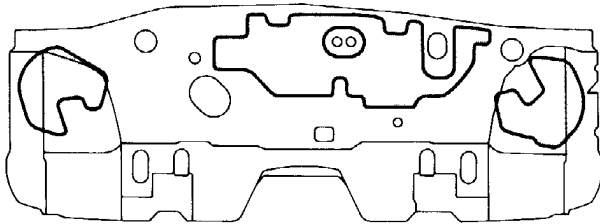
1. Front door panel, inner
2. Front door beltline reinforcement, inner
3. Front door beltline reinforcement, outer
4. Front door stiffener, outer
5. Front door panel, outer
6. Front door hinge reinforcement
7. Front door mirror reinforcement
8. Side door beam

## SILENCER APPLICATION LOCATIONS

In order to reduce vibration and screen out heat from the exhaust gas, silencers (melting sheets) are applied to the top of the floor and to the passenger compartment side of the dash panel. If

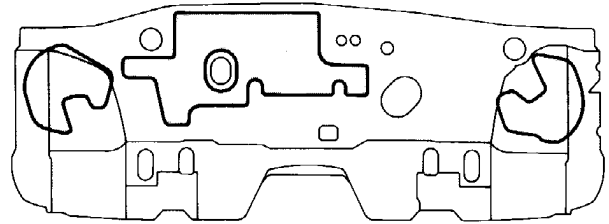
the silencers come off during welded panel replacement or other repairs, cut the replacement parts in the shapes indicated and apply them in the appropriate locations.

**L.H. drive vehicles**



31F0121

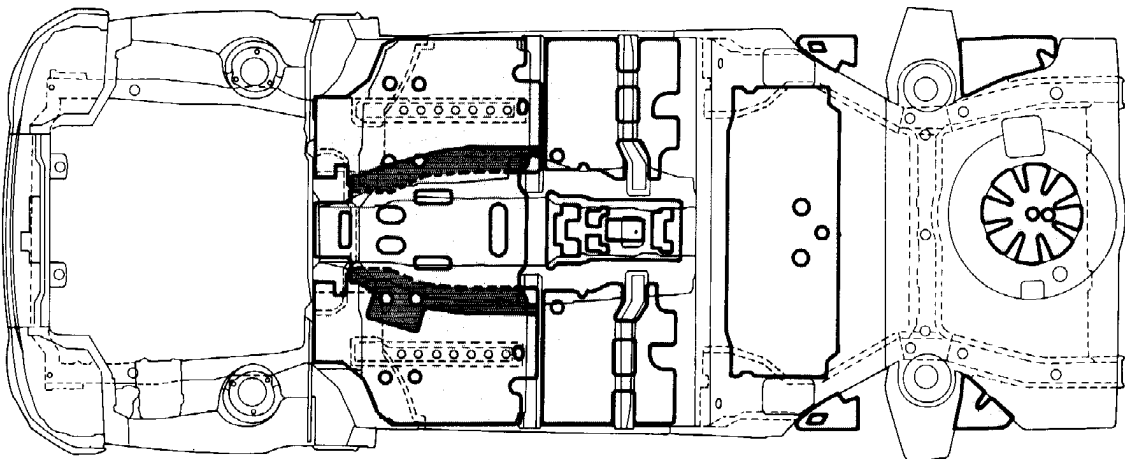
**R.H. drive vehicles**



31F0122

**Passenger compartment side of the dash panel**

**Passenger compartment side of the dash panel**



□ 1.6 mm (0.06 in.) thick

31F0135