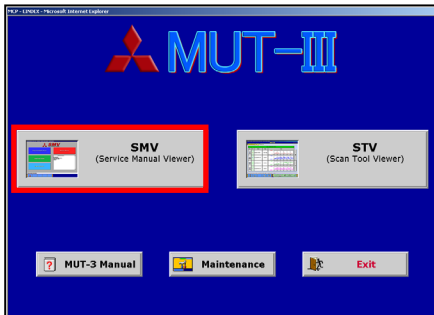


Operating the Service Manual Viewer

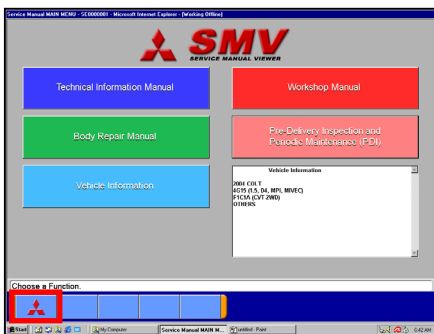
1. Starting SMV (Service Manual Viewer)



< MUT-III Start Screen >


(1) Starting of SMV

When pressing **SMV** button on MUT-III Start Screen, SMV (Service Manual Viewer) will be started.



< SMV Main Menu Screen>

(2) SMV Main Menu Screen

When pressing  button on SMV Main Menu Screen, you can return to the MUT-III Start Screen.

2. Details of SMV Main Menu Screen

Details of each buttons are as follows.



..... To view the contents of 'Technical Information Manual'



..... To view the contents of 'Workshop Manual'



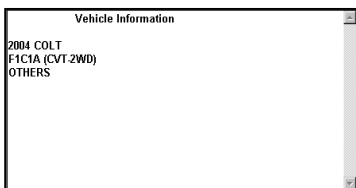
..... To view the contents of 'Body Repair Manual'



..... To open the PDF file of 'Pre-Delivery Inspection and Periodic Maintenance (PDI)'



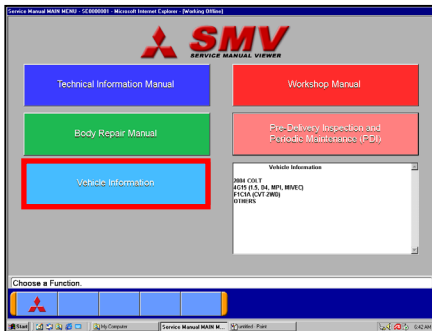
..... To select vehicle models to view the manuals.



..... Currently selected vehicle information is displayed on this window.
It shows 'model year', 'model', 'engine' and 'transmission' selected on 'Vehicle Information setting screen'.



3. Vehicle Information setting


Before viewing the manual contents, please confirm/select the vehicle models by following steps.
(No need before viewing the 'Pre-delivery Inspection & Periodical Maintenance (PDI)')



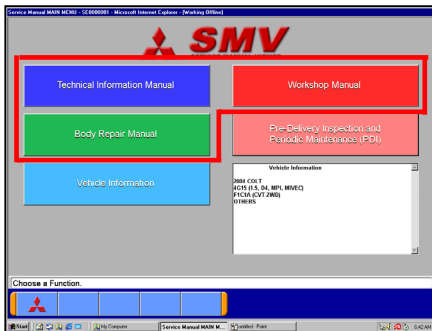
- (1) When selecting **Vehicle Information** on SMV main menu, the next 'Vehicle information setting screen' will appear.



- (2) Vehicle information that is currently selected is displayed in a field of each item. (Blank space means information of the item is not selected.)
 - When you modify a part of vehicle information, press an item button you want to modify, and reselect the information.
 - When you modify whole vehicle information, press  button and reselect the information.
 - When you press  button, history of vehicle information setting is displayed, and you can reselect it.

When you close this screen, press  button.

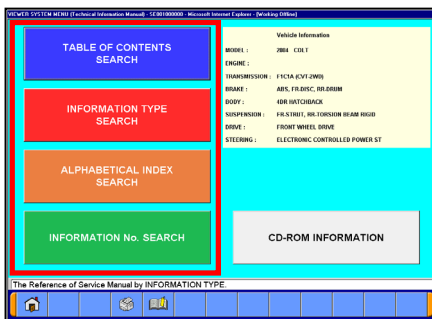
4. 'Technical Information Manual', 'Workshop Manual' and 'Body Repair Manual'



- (1) Select a manual button (**Technical Information Manual**, **Workshop Manual** or **Body Repair Manual**) to view the contents.

Note:

As for **Pre-Delivery Inspection and Periodic Maintenance** button, refer to Section 5.

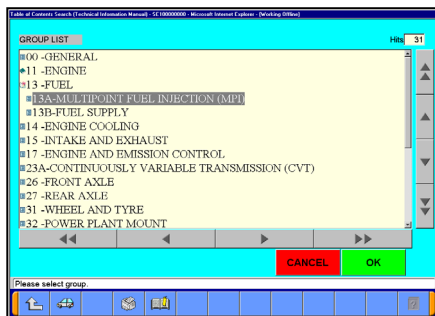





- (2). Selecting the Search method
When selecting a manual button on SMV Main Menu screen, the left screen appears.
 - Select a search method from (a) (b) (c) (d) corresponding to your purpose to display appropriate page of manual.

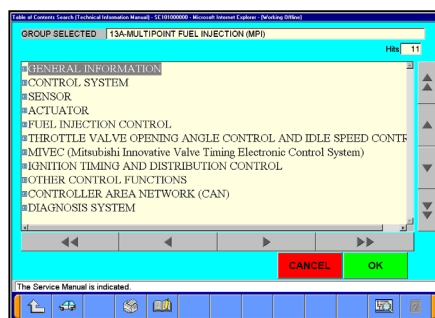


(a) Table of Contents Search

Search information using table of contents.

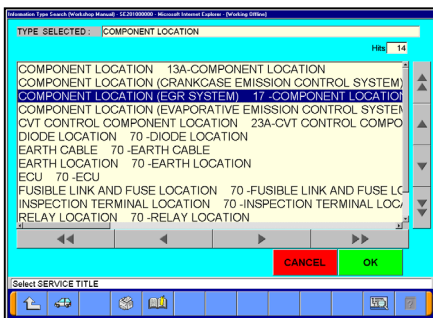
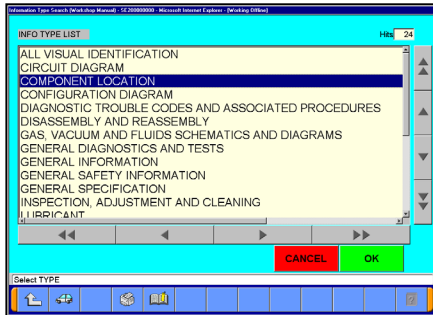


- (i) The Group List of selected manual appears.
When you press a title with  mark, the mark turns to  mark, and titles in lower layer are displayed. Select a group title with  mark and press **OK** button.



- (ii) Open the group and display next list.
Select a title you want to view and press **OK** button. -- to (3)

INFORMATION TYPE SEARCH

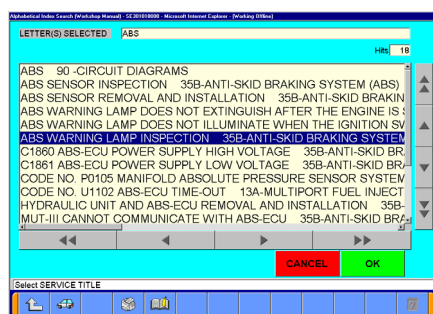
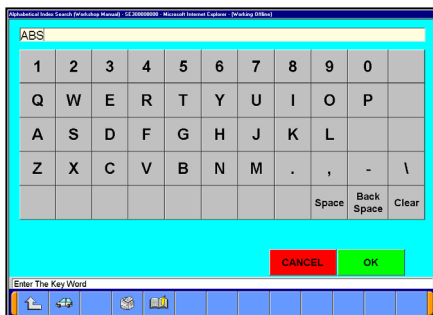


(b) Information Type Search

Search information by narrowing down information type such as 'Troubleshooting', 'Removal and installation', 'Circuit Diagram' etc.

- (i) Select an information type to search and press **OK** button.
- (ii) Select an information title to view from narrowed list and press **OK** button. -- to (3).

ALPHABETICAL INDEX SEARCH



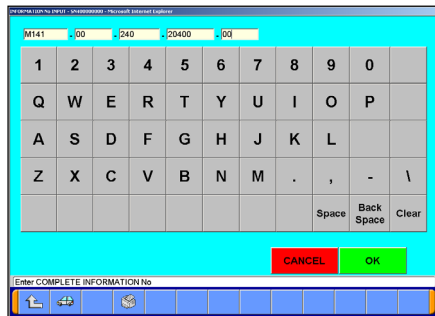
(c) Alphabetical Index Search

Search information using the Alphabetical Index

- (i) Enter a Key Word of searching information and press **OK** button.
- (ii) Information titles including the Key Word are displayed. Select a title to view and press **OK** button. -- to (3).

(d) Information No. Search

Search information entering complete Information No.

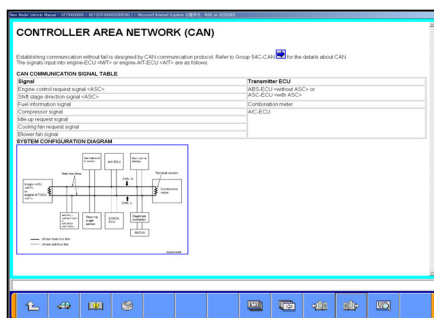


- (i) Enter the Information Number of searching information completely and press **OK** button.

-- to (3)

Note:

Information No is the number assigned to each page of manuals. Which appears along the bottom edge of manual display screen.



- (3) Display of the appropriate page of the manual.



... Return to main menu



... Vehicle information



... Documents information



... Print screen



... Table of contents including currently displayed title.



... Back to the last page



... Back to previous page



... Go to next page



... Return to the list screen at search

• Illustration Zooming

When you press (click) a boxed illustration on the page, a full-page illustration window opens.



... Close enlarged illustration



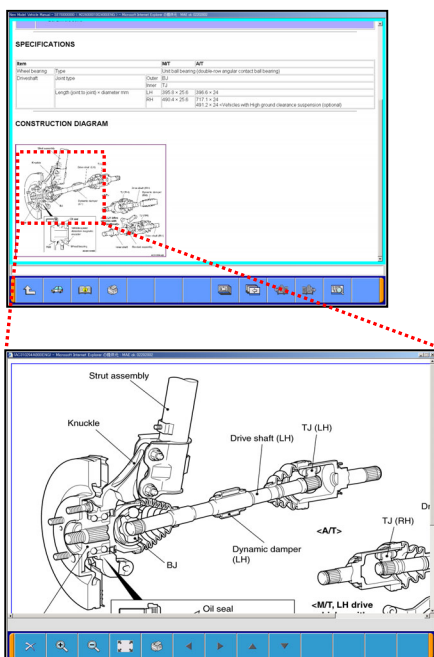
... Zoom in



... Zoom out

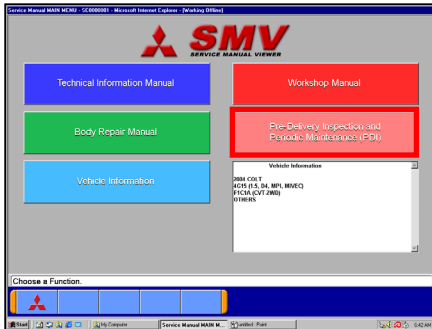


... Back to initial setting of illustration window

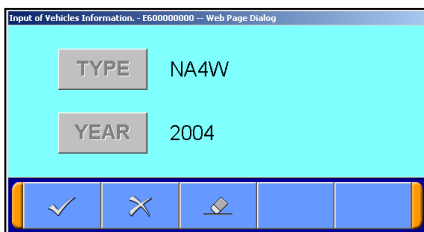




NOTE: The illustration will move around the point where clicked.

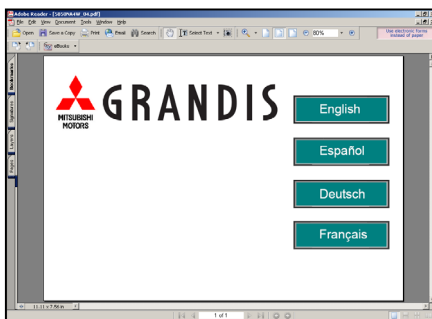
5. 'Pre-Delivery Inspection & Periodical Maintenance (PDI)'




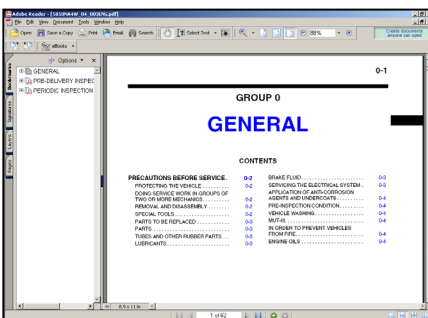
- (1) Select the **Pre-Delivery Inspection & Periodical Maintenance** button to view the contents.



- (2) When pressing above button, a confirmation message of vehicle type will be displayed.
 - When the information is proper, press  button. --To (3)
 - When you modify either TYPE or YEAR, press the button and reselect the information.
 - When you modify whole information, press  button and reselect the information.



- (3) Acrobat-Reader starts by pressing  button on (2). Select a language to display the PDI.



- (4) The PDF file of 'Pre-delivery Inspection & Periodical Maintenance' is displayed.
 - When close the window, return to previous Manual selection menu.