

WHEEL AND TIRE SYSTEM INSPECTION

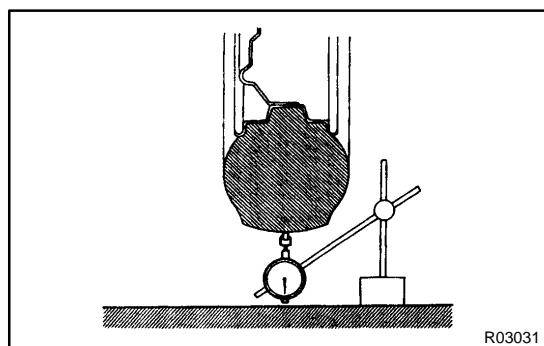
28009-17

1. INSPECT TIRE

- (a) Check the tires for wear and proper inflation pressure.

Cold tire inflation pressure:

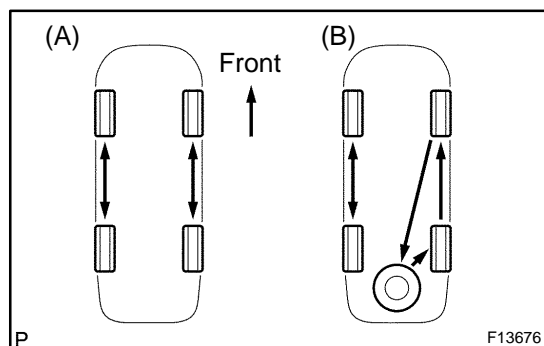
Tire size	Front, Rear kPa (kgf/cm ² , psi)
P215/60R16 94V	200 (2.0, 29)
P215/55R17 93V	210 (2.1, 30)



R03031

- (b) Using a dial indicator, check the tire runout.

Tire runout: 1.0 mm (0.039 in.) or less



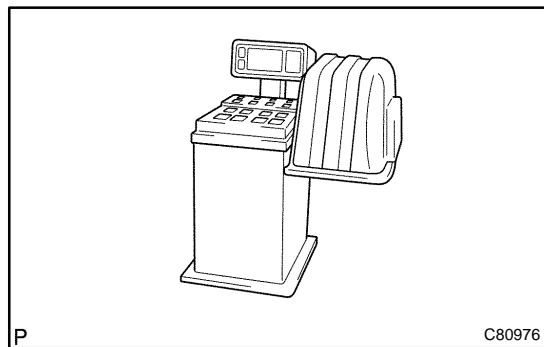
P

F13676

2. ROTATE TIRES

HINT:

- Rotate tires as shown in illustration (A) if a spare tire is not included in the rotation.
- Rotate tires as shown in illustration (B) if a spare tire is included in the rotation.



P

C80976

3. INSPECT WHEEL BALANCE

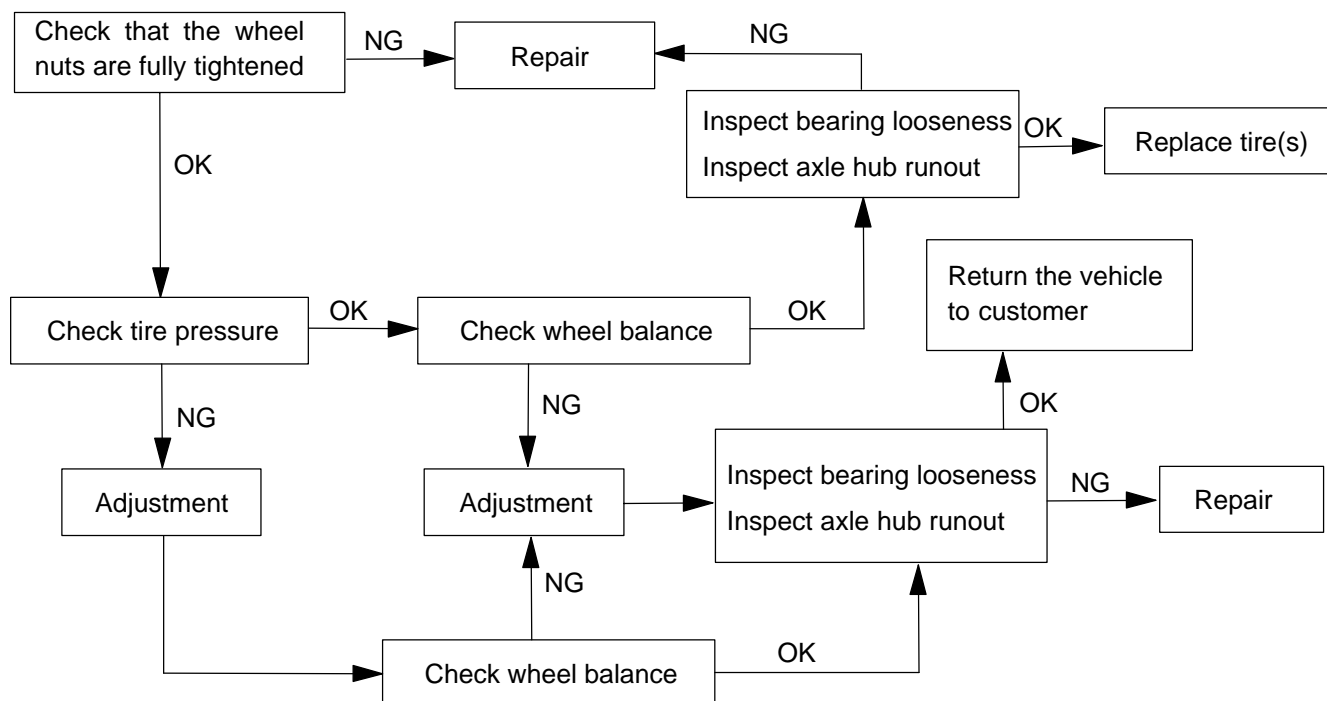
- (a) Check and adjust the Off-the-car balance.
- (b) If necessary, check and adjust the On-the-car balance.
- Imbalance after adjustment: 8.0 g (0.018 lb) or less**

4. INSPECT BEARING LOOSENESS (SEE PAGE 30-2)

5. INSPECT AXLE HUB RUNOUT (SEE PAGE 30-2)

HOW TO PROCEED WITH TROUBLESHOOTING

1. VEHICLE PULLING DIAGNOSIS (SEE PAGE 26-2)
2. DIAGNOSIS OF TIRE VIBRATION



3. DIAGNOSIS OF IRREGULAR TIRE WEAR

