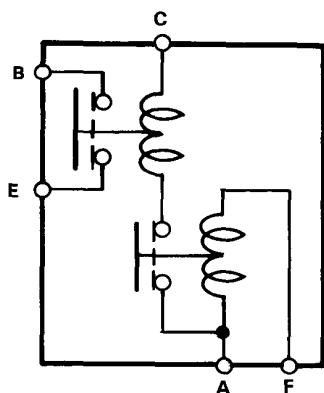
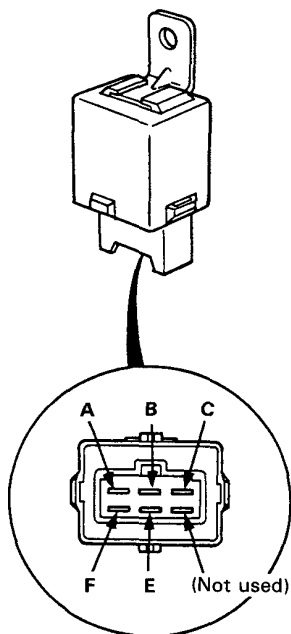




Brake Lights

Dim-Dip Relay Test

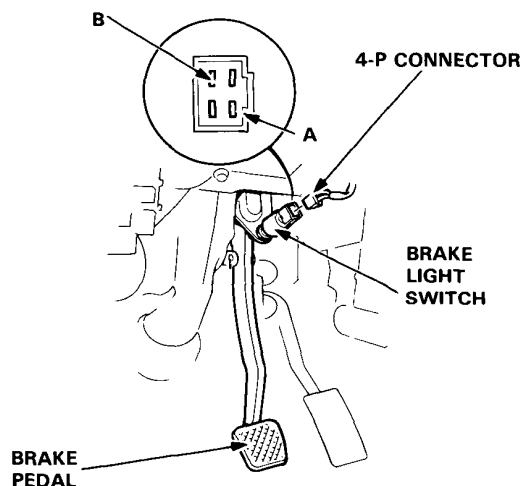
1. Remove the Dim-Dip relay located under the left front seat.
2. There should be continuity between the B and E terminals with battery positive connected to the C and F terminals, connect negative to the A terminal. There should be no continuity between the B and E terminals when the battery is disconnected.



Test

NOTE: Refer to page 16-86 for wiring description of the brake light circuit.

1. Test brake light switch by pushing the brake pedal.
2. If the brake lights do not go on, check the No. 31 (20 A) fuse in the under-hood relay box, and the brake light bulbs in the taillight assembly.
3. If the fuse and bulbs are OK, disconnect the 4-P connector from the brake light switch.



4. Check for continuity between the A and B terminals. There should be continuity with the brake pedal pushed.
- If no continuity, replace the switch or adjust pedal height (see section 13).
 - If there is continuity, but the brake lights do not go on:
 - Poor ground.
 - (KG model: G503, Others: G501)
 - An open in the WHT/GRN or GRN/WHT wire.
 - Faulty brake light failure sensors (see page 16-92).