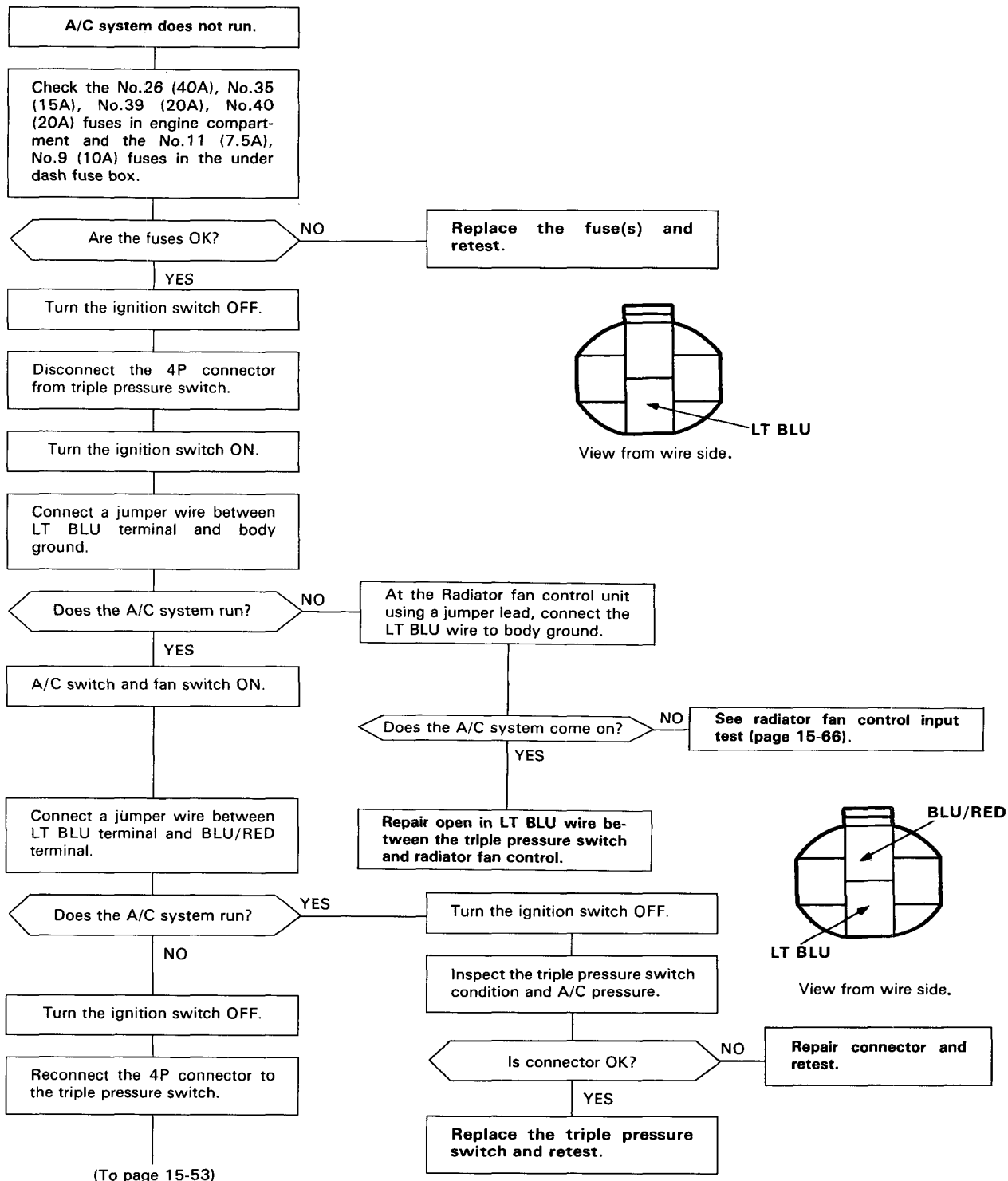


Troubleshooting

Flow Chart — A/C System

NOTE: Use the digital circuit tester (07411—0020000) to check



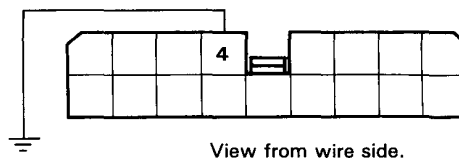


(From page 15-52)

Remove the climate control unit
(page 15-89).

Turn the ignition switch ON.

Connect a jumper wire between
BLU/RED (B-4) terminal and body
ground.



Does the A/C system run?

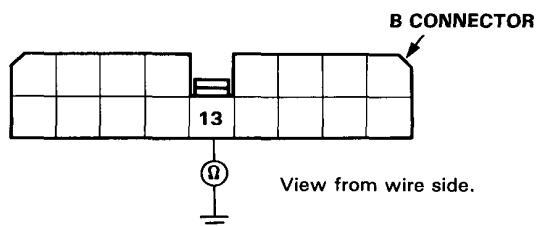
NO

Repair open in BLU/RED wire be-
tween pressure switch and con-
trol unit.

YES

Turn the ignition switch OFF.

Check for continuity between
BLK (B-13) terminal and body
ground.



Is there continuity?

NO

Repair open in BLK wire between
control unit and body ground or
poor ground (G701).

YES

Inspect the control unit A and B
connectors condition.

Are the connectors OK?

NO

Repair the connectors and retest.

YES

Substitute a known-good control
unit and retest.