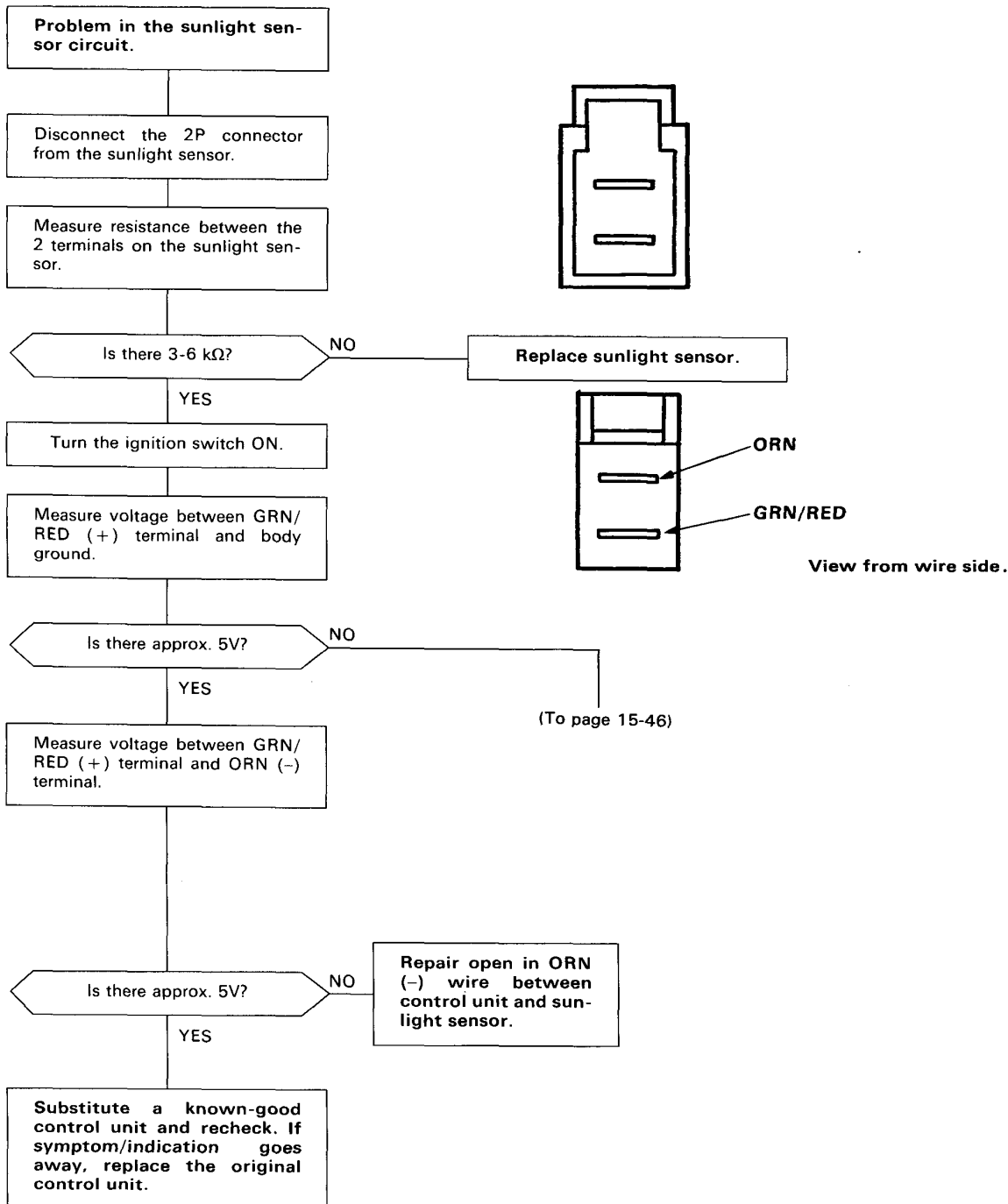




## Flow Chart — Sunlight Sensor

Self-diagnosis indicator light E comes on: Indicates a problem in the Sunlight Sensor circuit.

NOTE: Use the digital circuit tester (07411—0020000) to check



(cont'd)

# Troubleshooting

## Flow Chart — Sunlight Sensor (cont'd)

(From page 15-45)

Turn the ignition switch OFF.

Remove the climate control unit  
(page 15-89)

Turn the ignition switch ON.

Measure voltage between B-4  
(+) terminal and B-7 (-) terminal.

Is there approx. 5V?

YES

Repair open in GRN/  
RED (B-4) wire be-  
tween control unit and  
sunlight sensor.

NO

Disconnect the B connector from  
the climate control unit.

Measure resistance between B-4  
(+) terminal and body ground.

Is there less than 100  $\Omega$ ?

NO

Repair short in GRN/  
RED (B-4) wire be-  
tween control unit and  
sunlight sensor.

YES

Substitute a known-good  
control unit and recheck. If  
symptom/indication goes  
away, replace the original  
control unit.

