



**HONDA**



Honda CR-V

Shop manual and Body Repair manual

User Guide

Table of Contents

**System requirements.....3**  
    Hardware requirements.....3  
    Software requirements .....3  
**Installation .....4**  
**Use .....6**  
    Starting the application .....6  
    Quitting the application.....7  
**The user interface .....8**  
    Structure.....8  
    Navigation .....9  
    Overview of the tabs in the Navigation window:.....9  
    Overview of the navigation buttons in the Navigation window: .....11  
    Overview of the Print functions in the Print window: .....12  
**Removal .....13**

## System requirements

### **Hardware requirements**

The Honda CR-V Shop manual and Body Repair manual can be installed on any IBM compatible personal computer that meets the following minimum system requirements:

- Pentium II, III or IV processor.
- Minimum 16 MB RAM.
- SVGA colour monitor, 800\*600 resolution.
- Microsoft mouse or compatible pointer tool.
- CD-ROM drive.
- ❖ *The application can be installed on a portable computer.*

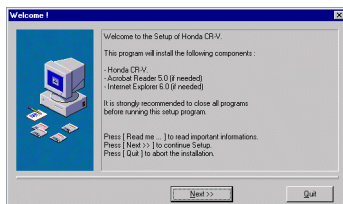
### **Software requirements**

- Windows 95, Windows 98, Windows 2000, Windows NT 3.51 or higher.
- Microsoft Internet Explorer 4.5 or higher.
- Adobe Acrobat Reader 4.x or higher.
- ❖ *If no Microsoft Internet Explorer is installed on your computer, foresee 20 MB of free hard disk space.*

## Installation

Inserting the CD-ROM for the first time in the CD-ROM drive will start up the installation wizard automatically.

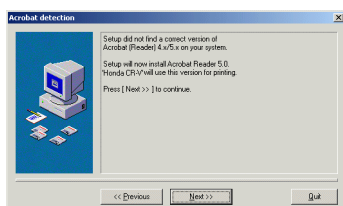
- 1 Close all programs before installing the application.
- 2 Insert the application CD-ROM in the CD-ROM drive.  
The following dialog box appears:



The presence of a proper Acrobat Reader and Internet Explorer is automatically detected by the setup procedure.



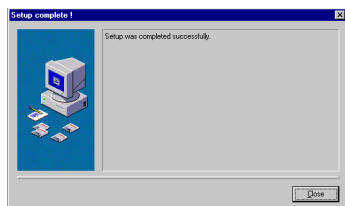
- ❖ *If no suitable version of Acrobat Reader is present, Acrobat Reader will be installed.*



When all required software is present, the Honda CR-V application will be installed in the standard folder, proposed by the installation wizard.

- ❖ *The Honda CR-V application cannot run without the CD inserted in the CD drive.*

### 3 Click Close to confirm a successful installation.



The installation procedure is completed. A shortcut and the new Windows program group 'Honda CR-V' are created.

- ❖ *The menu Honda CR-V can be reached through Start>Programs>Honda.*



## Use

### Starting the application

The installed application can be started as follows:

- 1 Insert the CD-ROM in the CD-ROM drive.

The Language selection screen will be displayed:



- ❖ *Alternatively, if the CD-ROM has not been taken out of the CD-ROM drive after quitting the application earlier, double click the Honda CR-V shortcut on your desktop to launch the application again.*

- 2 Select the language of your choice in the list.
- 3 Select the appropriate manual in the Manual selection screen:



- ❖ *Click the Back button to select another language.*

---

***Quitting the application***

---

- 1 Click the Stop button in the Navigation window.



A dialog box will ask you to confirm.

- 2 Click 'Yes' to quit the application.  
Click 'No' to close the box and continue working in the application.
- 3 Remove the CD-ROM if applicable.

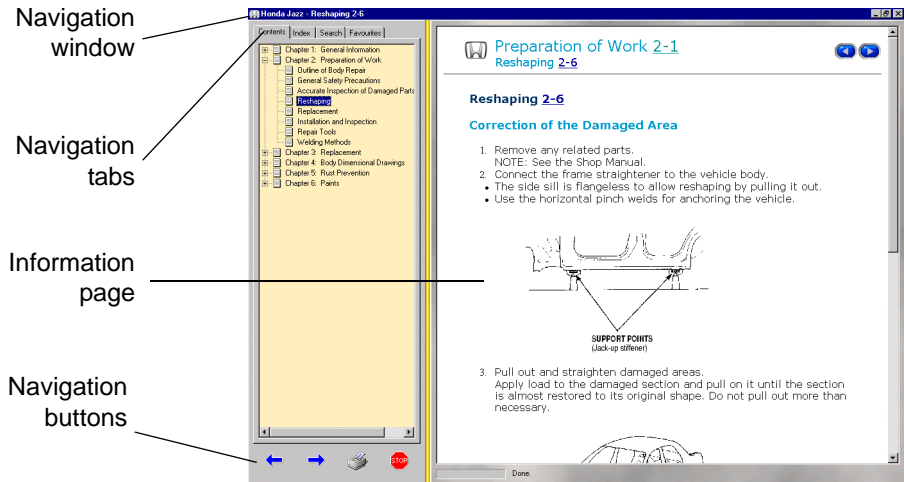
# The user interface

## Structure

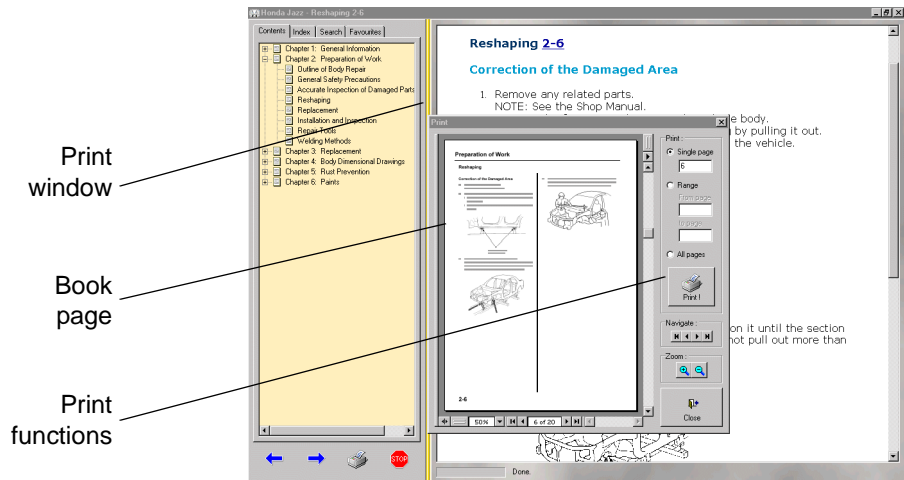
The Honda CR-V user interface has two windows:

- The Navigation window, containing Navigation tabs, Navigation buttons and an Information page.
- The Print window, containing Print functions and a Book page.

By default the Navigation window is displayed in full screen mode:



To activate the Print window, click the Print button:





Navigation

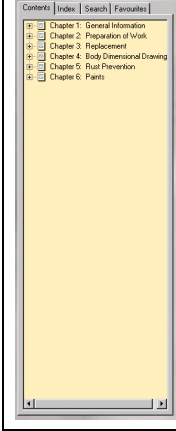
The user interface permits navigation in two ways:

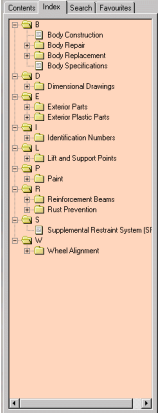
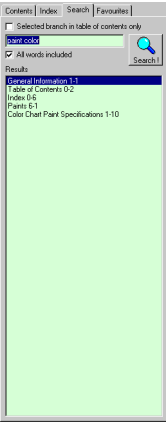
- Through the web pages via the Navigation buttons in the Navigation window  
*Refer to 'Overview of the navigation buttons in the Navigation window:' on page 11.*
- Through the book pages via the Print functions in the Print window (*Refer to 'Overview of the Print functions in the Print window:' on page 12).*

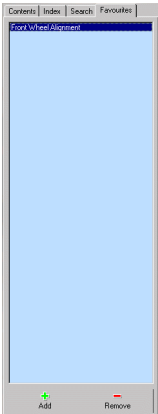
Only the left mouse button is active. The keyboard is only used when you need to enter information (e.g. a search term).

Overview of the tabs in the Navigation window:





The tabs are permanently displayed on the left of the Navigation window. To adapt the width of the tabs, click and drag the yellow vertical border between the tabs and the Information page.

Tab	Name	Action
	Contents	<p>Select the Contents tab to view the complete table of contents of the current manual. The structure of this table of contents fully matches the structure of a standard Honda manual.</p> <ul style="list-style-type: none"><li>• You can choose a section as in Windows Navigator, by clicking a folder and then click a document description in the folder. The corresponding document is then shown in the Information page (html format).</li></ul>



Tab	Name	Action
	Index	<p>Select the Index tab to get the alphabetical reference index.</p> <ul style="list-style-type: none"><li>Click an item in the index list to display the corresponding topic in the information page.</li></ul>
	Search	<p>Select the Search tab to activate the search function:</p> <ul style="list-style-type: none"><li>After filling in a term to be searched, a list - limited to the documents in which the search term appears - is displayed in order of appearance in the manual.</li><li>You can determine the search range yourself:<ol style="list-style-type: none"><li>Select a chapter or page in the Contents tab.</li><li>Select the Selected branch in table of contents only checkbox in the Search tab.</li><li>Activate the search.</li></ol>Only this folder and possible subfolders are being searched.</li><li>You can refine the search yourself by entering multiple word strings in the Search field. Select the All words included check box. Only pages containing all words in the Search field will be searched.</li></ul> <p>❖ <i>The search item is highlighted in the displayed document.</i></p>

Tab	Name	Action
	<b>Favourites</b>	<p>Select the Favourites tab to enter the current document in a list of favourite bookmarks.</p> <ul style="list-style-type: none"> <li>To add a page to the list of favourites, click the Plus button and enter an applicable name in the dialog box. The page, currently viewed in the information page is stored as a favourite.</li> <li>❖ <i>This is handy when several information pages need to be consulted in sequence for executing a specific maintenance activity.</i></li> <li>To delete a page from the list of favourites, click the Minus button.</li> <li>❖ <i>The list of favourites is linked to the user I.D. and will not be erased quitting the application.</i></li> </ul>

### Overview of the navigation buttons in the Navigation window:


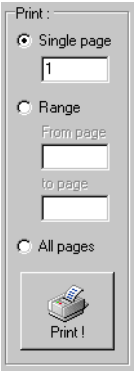


Button	Name	Action
	<b>Next page</b>	Click this button to continue browsing the already consulted pages.
	<b>Previous page</b>	Click this button to browse back to previously viewed pages.
	<b>Print</b>	<p>Click this button to open the print window.</p> <ul style="list-style-type: none"> <li><a href="#">Refer to 'Overview of the Print functions in the Print window:' on page 12.</a></li> </ul>
	<b>Quit</b>	<p>Click this button to quit the program.</p> <ul style="list-style-type: none"> <li><a href="#">Refer to 'Quitting the application' on page 7.</a></li> </ul>

### Overview of the Navigation buttons in the Information page:

Button	Name	Action
	<b>Next page</b>	Click this button to continue browsing the current document (html format).
	<b>Previous page</b>	Click this button to browse back in the current document (html format).

**Overview of the *Print* functions in the *Print* window:**

This window shows the current html page in a layout corresponding with the layout of the manual on paper. A real page is shown in reduced size, as reference to a specific page in the manual. The user can browse through the book pages, zoom in or out, and print a page, a page range or all pages within a chapter.

Functions	Name	Action
	Navigate	<p>Click these buttons to:</p> <ul style="list-style-type: none"><li>• Go to the first page of the current chapter.</li><li>• Go to the previous page of the current chapter.</li><li>• Go to the next page of the current chapter.</li><li>• Gp to the last page of the current chapter.</li></ul>
	Print	<p>Click an option button (and enter page numbers if applicable) to print:</p> <ul style="list-style-type: none"><li>• One single page of the current chapter.</li><li>• A page range of the current chapter.</li><li>• All pages of the current chapter.</li></ul> <p>Click the Print! button to print the selection on your system default printer.</p>
	Zoom	<p>Click the magnifiers to zoom in or out on a page.</p> <p>Use the scroll bars to view a particular item on the page (e.g. an image) when necessary.</p>
	Close	<p>Click this button to quit the print window.</p>

## Removal

The installed application can be removed from your system as follows:

- 1 Close all programs.
- 2 Click the Windows Start button and select Programs>Honda>Honda CR-V Uninstall.

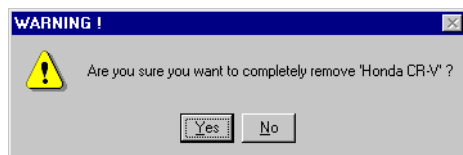


The Uninstall wizard is launched:

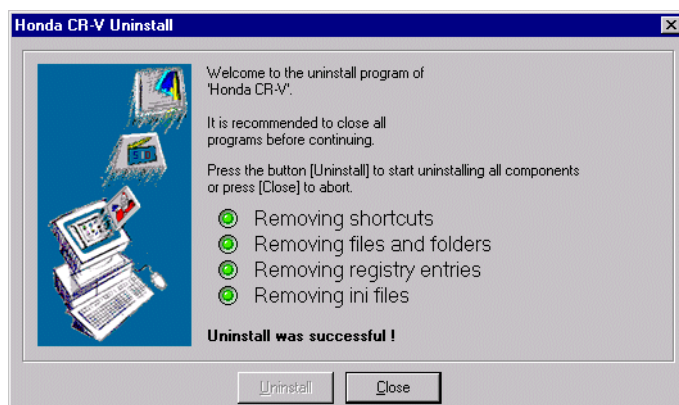


- 3 Click Uninstall to start the wizard.
- ❖ *Click 'Close' if you want to cancel the Uninstall wizard.*

A confirmation dialog box is displayed. Click 'Yes' to confirm uninstall.



All concerned program files are now automatically removed.



The Honda CR-V application is now removed from your system.

- ❖ To re-install the application, [refer to 'Installation' on page 4.](#)