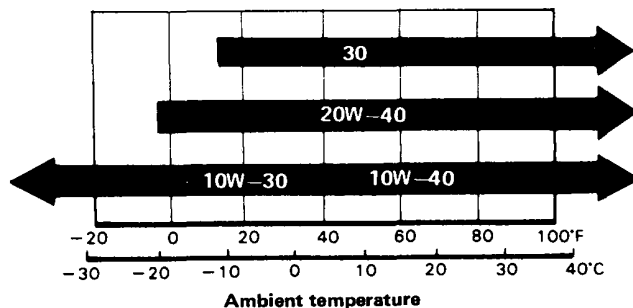


Lubrication Point

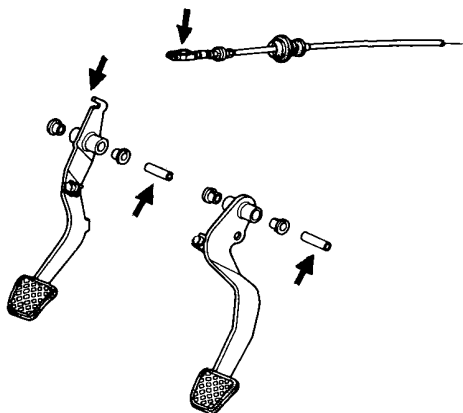
No.	LUBRICATION POINTS		LUBRICANT
1	Engine	Canadian Except Canadian	API Service Grade: SE or SF grade only API Service Grade: SE or SF grade only SAE Viscosity: See page 4-4 chart
2	Transmission	Manual Hondamatic	API Service Grade: SE or SF SAE30, 10W-30, 10W-40 or 20W-40 grade oil DEXRON Automatic transmission fluid
3	Brake reservoir		Brake fluid DOT 3 or DOT 4
4	Front wheel bearings and seals		Multipurpose Grease
5	Torsion-bar spring		
6	Tie rod ball joints		
7	Steering gearbos		
8	Shift lever pivot (Manual)		
9	Select lever (Hondamatic)		
10	Battery terminals		
11	Pedal linkage		
12	Rear brake shoe linkage		
13	Steering column bushings		
14	Caliper	Piston seal Dust seal Caliper pin Piston	Silicone Grease
15	Shift clevis bushings		Multipurpose Grease
16	Door hinges upper and lower		
17	Door opening detents		
18	Engine hood latch		
19	Hood hinges		
20	Fuel filler door		
21	Trunk hinges		

Recommended Manual Transmission Oil
(SE or SF grade Only)

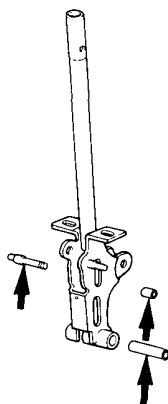




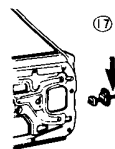
⑪ PEDAL LINKAGE



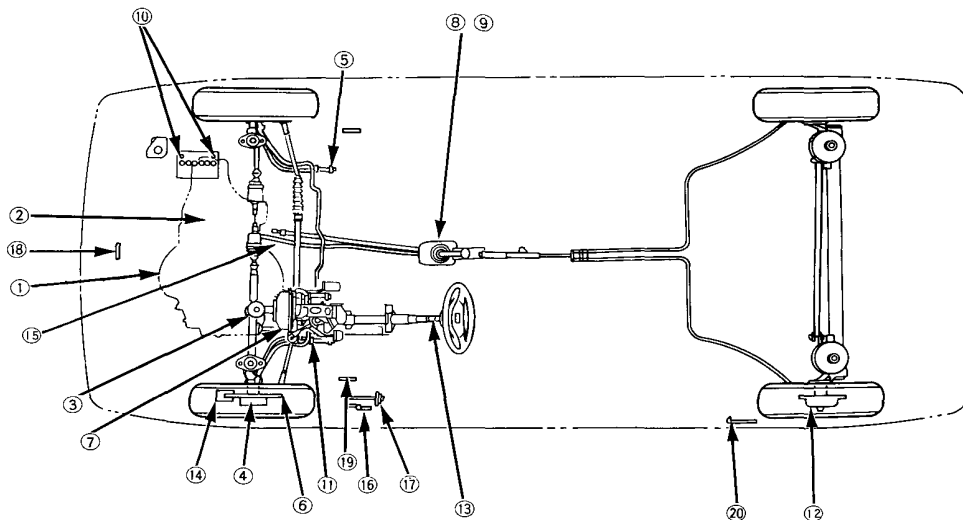
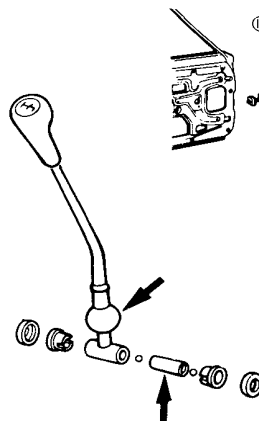
⑨ SELECT LEVER



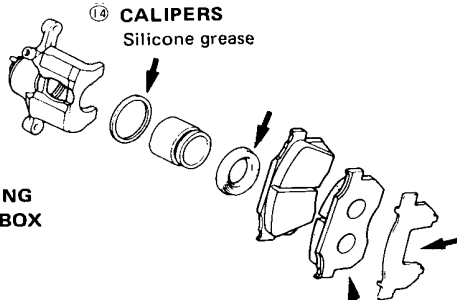
⑪ DOOR OPENING DETENTS



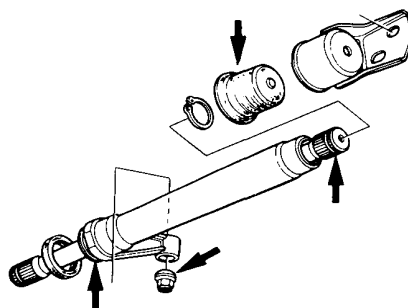
⑧ SHIFT LEVER PIVOT



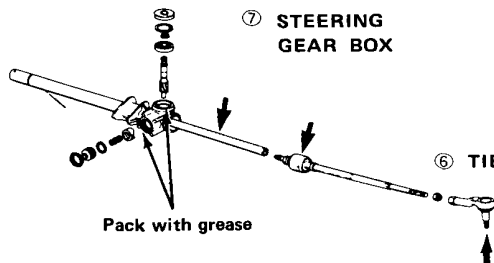
⑭ CALIPERS
Silicone grease



⑤ TORSION - BAR SPRING



⑦ STEERING
GEAR BOX



⑥ TIE ROD BALL JOINT

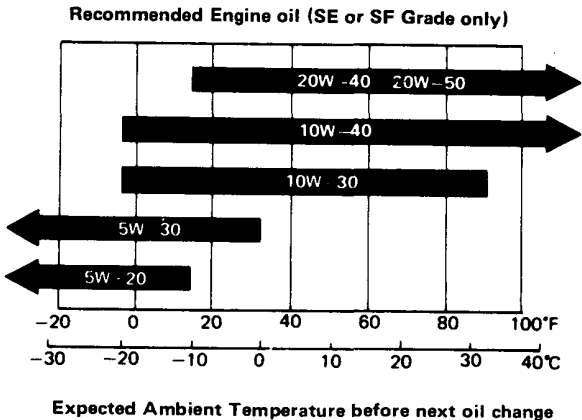
Pack with grease

Lubrication (cont'd)

Recommended Engine Oil

Canadian Model

Engine oil viscosity for ambient temperature ranges.



Except Canadian Models

Engine oil viscosity for ambient temperature ranges.

