



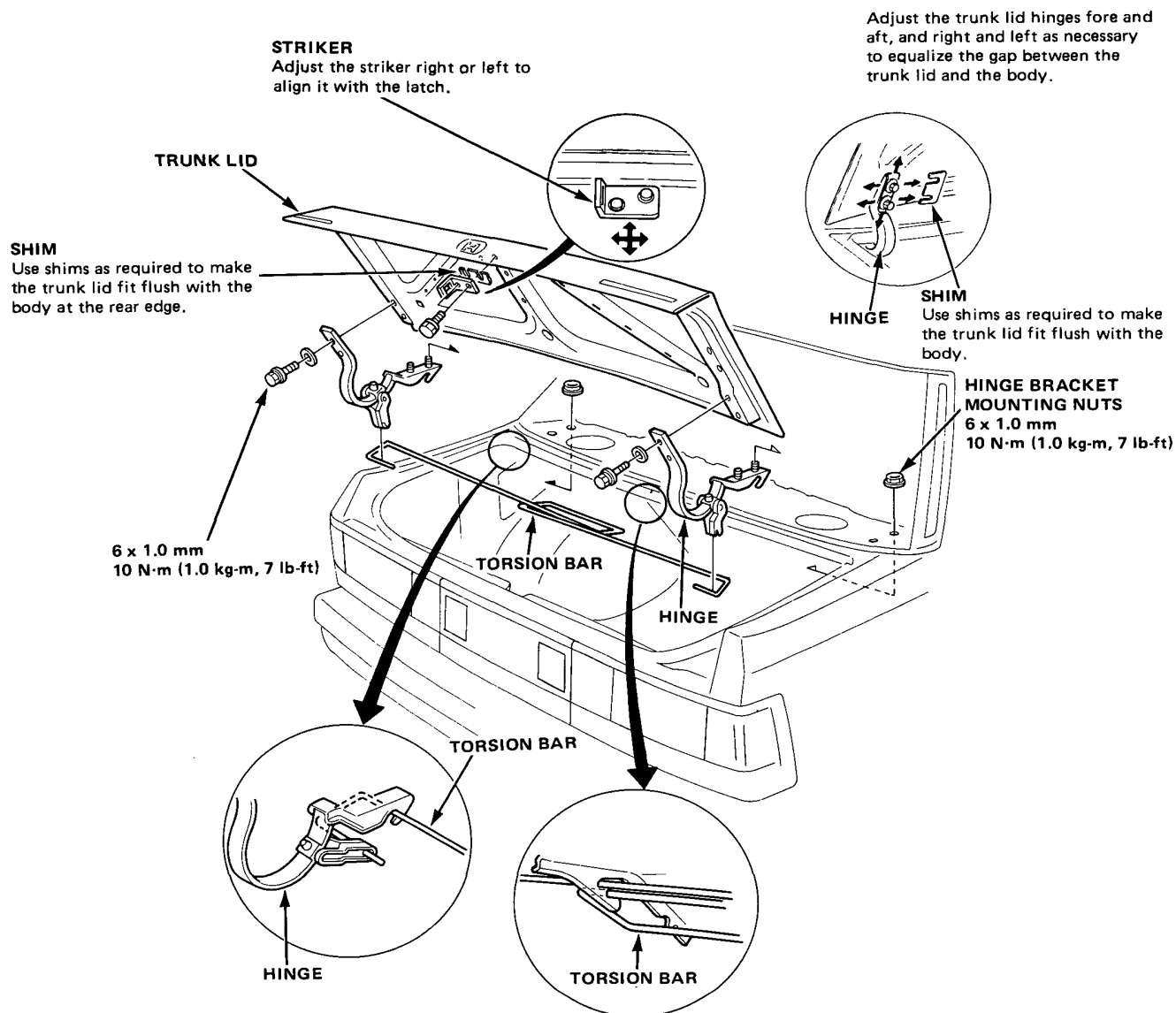
Trunk Lid

Replacement/Adjustment

1. Remove the trunk lid hinge bolts, then lift off the lid.
2. Remove the torsion bars by hand.

CAUTION: The torsion bars are under spring tension.

3. Remove the rear shelf.
4. Remove the hinge bracket mounting nuts, then remove the hinges from the trunk.
5. Before tightening the hinge bolts, check the adjustments shown below:



Trunk Lid

Opener and Latch Replacement

Disassemble in numbered sequence.

