



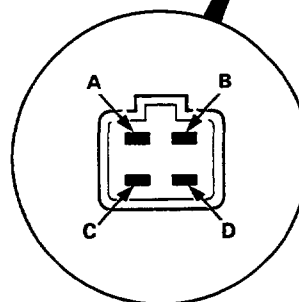
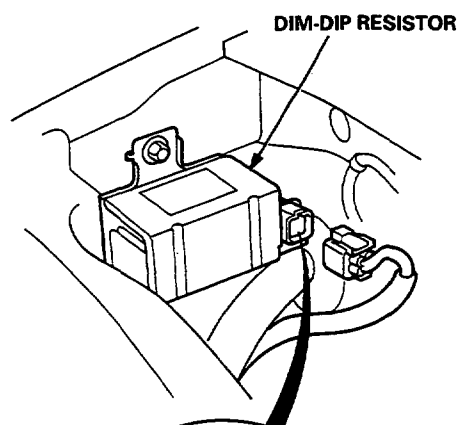
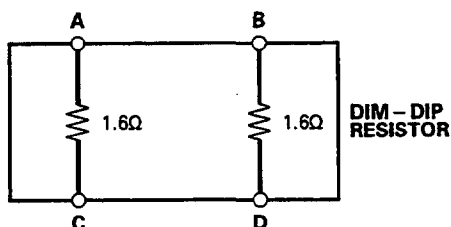
Dim-Dip Resistor Test (KE model)

CAUTION: The dim-dip resistor becomes very hot when using the dim-dip headlights. Do not touch it or the attaching hardware immediately after they have been turned off.

1. Disconnect the 4-P connector from the resistor.
2. Using an ohmmeter, measure resistance between the terminals.

NOTE: Resistance will vary with the resistor temperature before and after use.

Terminals	Resistance
A - C	$1.6 \pm 0.08 \Omega$
B - D	



View from terminal side

3. If it is not within specifications, replace the dim-dip resistor.