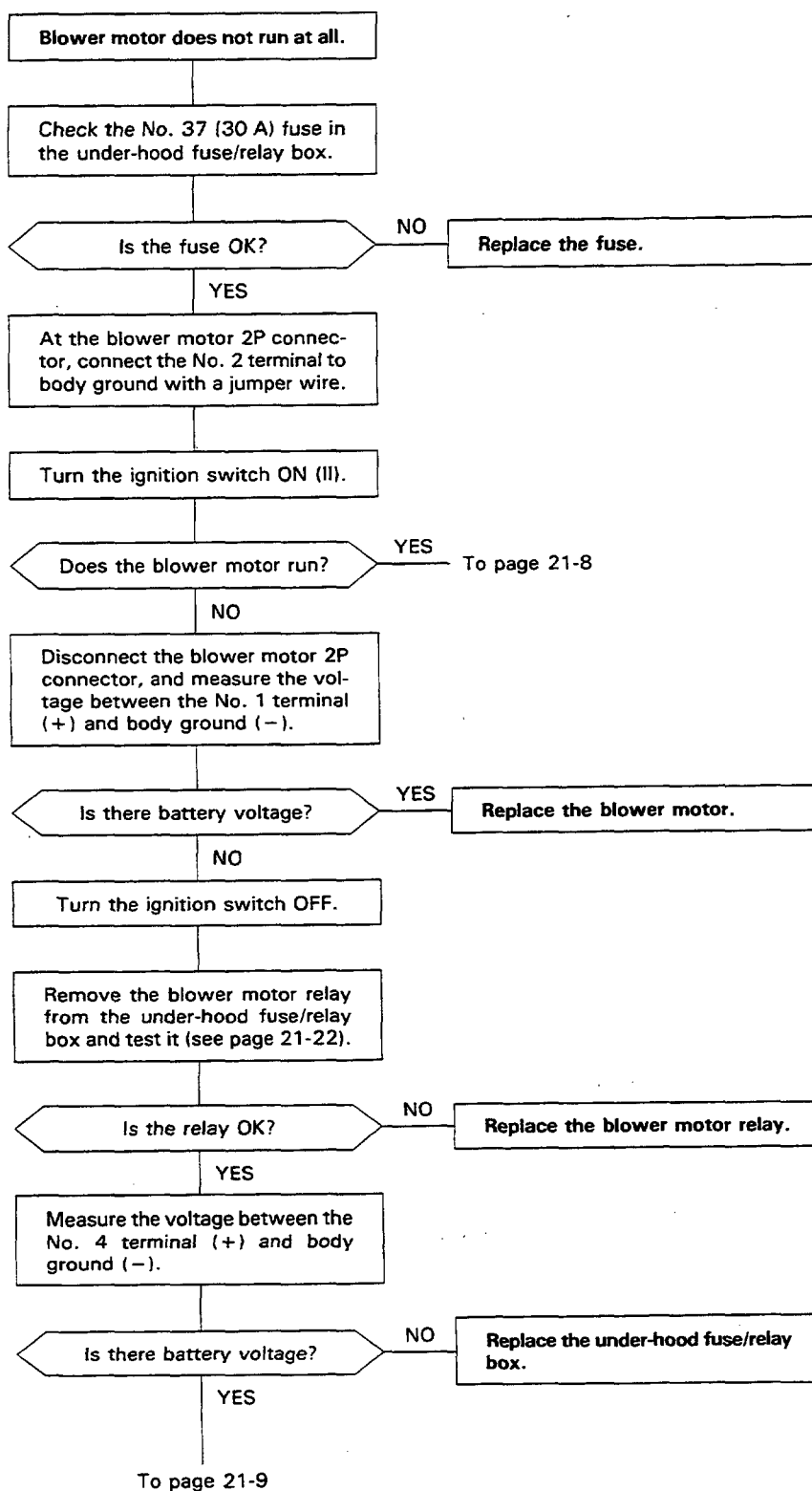
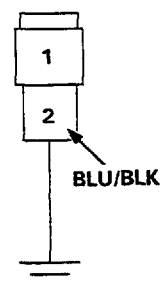




Blower Motor

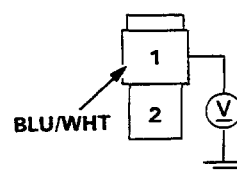


BLOWER MOTOR 2P CONNECTOR



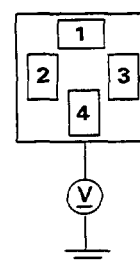
WIRE SIDE FEMALE TERMINALS

BLOWER MOTOR 2P CONNECTOR



WIRE SIDE FEMALE TERMINALS

UNDER-HOOD FUSE/RELAY BOX



(cont'd)

Troubleshooting

Blower Motor (cont'd)

From page 21-7

Turn the ignition switch OFF.

Remove the heater control panel
(see page 21-17).

Disconnect the heater fan switch
8P connector.

Turn the ignition switch ON (II).

Measure the voltage between the
No. 8 terminal (+) and body
ground (-).

Is there battery voltage?

NO

Repair open in the BLU/BLK wire
between the blower motor and
the heater fan switch.

YES

Turn the ignition switch OFF.

Check for continuity between the
No. 2 terminal of the heater fan
switch 8P connector and body
ground.

Is there continuity?

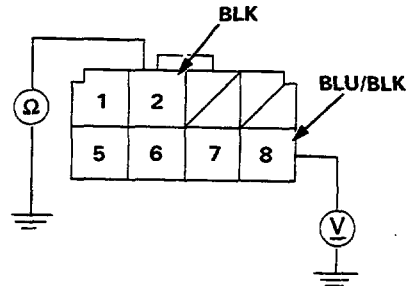
NO

Check for an open in the BLK wire
between the heater fan switch
and body ground. If the wire is
OK, check for poor ground at
G201, G401.

YES

Replace the heater fan switch.

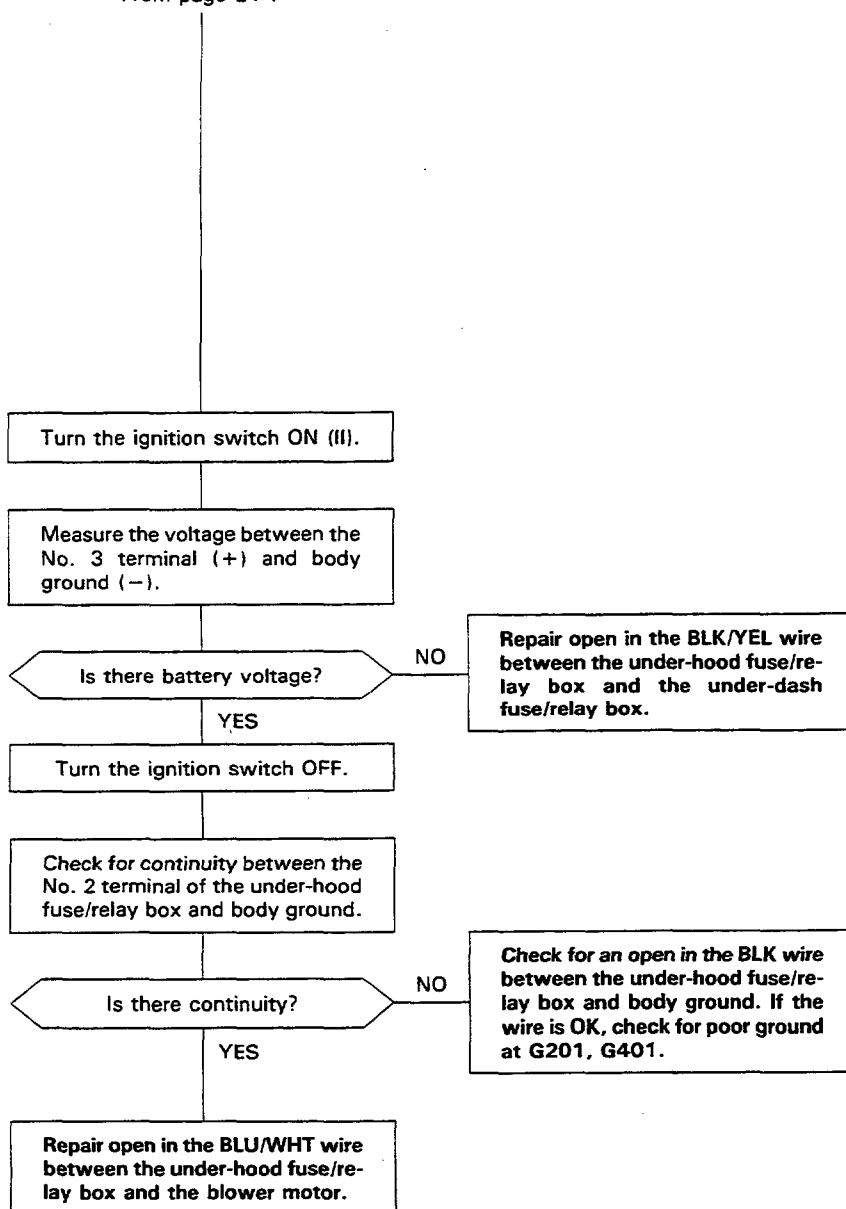
HEATER FAN SWITCH 8P CONNECTOR



WIRE SIDE FEMALE TERMINALS



From page 21-7



UNDER-HOOD FUSE/RELAY BOX

