

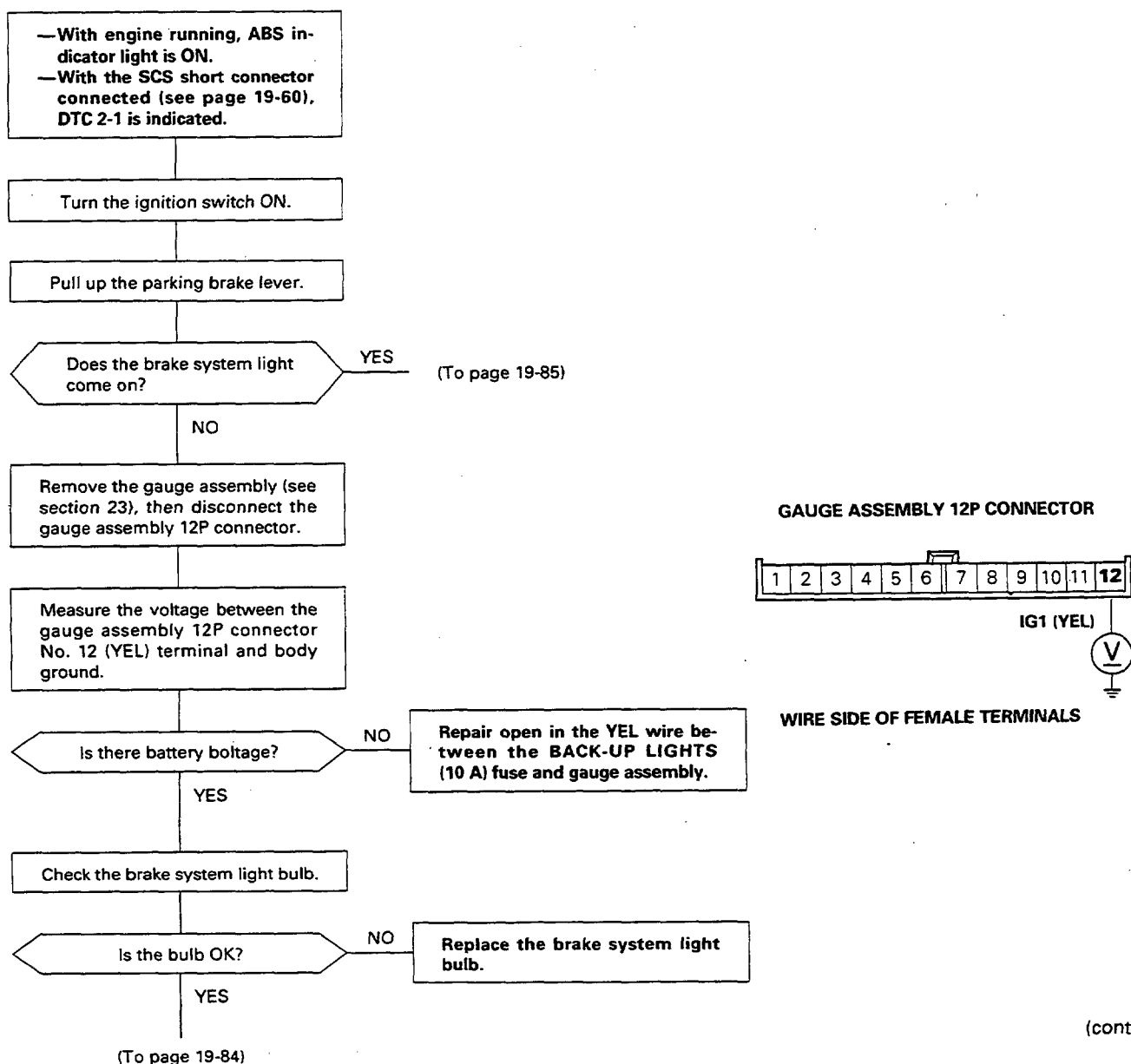
Parking Brake

Diagnostic Trouble Code (DTC) 2-1: Parking Brake Diagnosis

The ABS control unit monitors the parking brake signal during the regular diagnosis (during driving). It turns the ABS indicator light on if it detects the parking brake ON signal for 30 seconds.

Possible causes:

- Driving with the parking brake applied
- Low fluid level in the master cylinder reservoir
- Open circuit between the BACK-UP LIGHTS (10 A) fuse and brake system light
- Blown brake system light bulb
- Open circuit or short to body ground between the brake system light and ABS control unit
- Parking brake switch stuck ON
- Short to body ground between the brake system light and parking brake switch
- Brake fluid level switch stuck ON
- Short to body ground between the brake system light and brake fluid level switch
- Faulty ABS control unit



Troubleshooting

Parking Brake (cont'd)

(From page 19-83)

Connect the gauge assembly 12P connector.

Connect the gauge assembly 10P connector No. 1 (GRN/RED) terminal to body ground.

Does the brake system light come on?

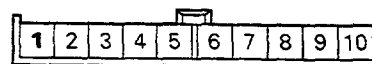
NO

Replace the printed circuit board in the gauge assembly.

YES

Repair open in the GRN/RED wire between the gauge assembly and parking brake switch.

GAUGE ASSEMBLY 10P CONNECTOR



PARK (GRN/RED)

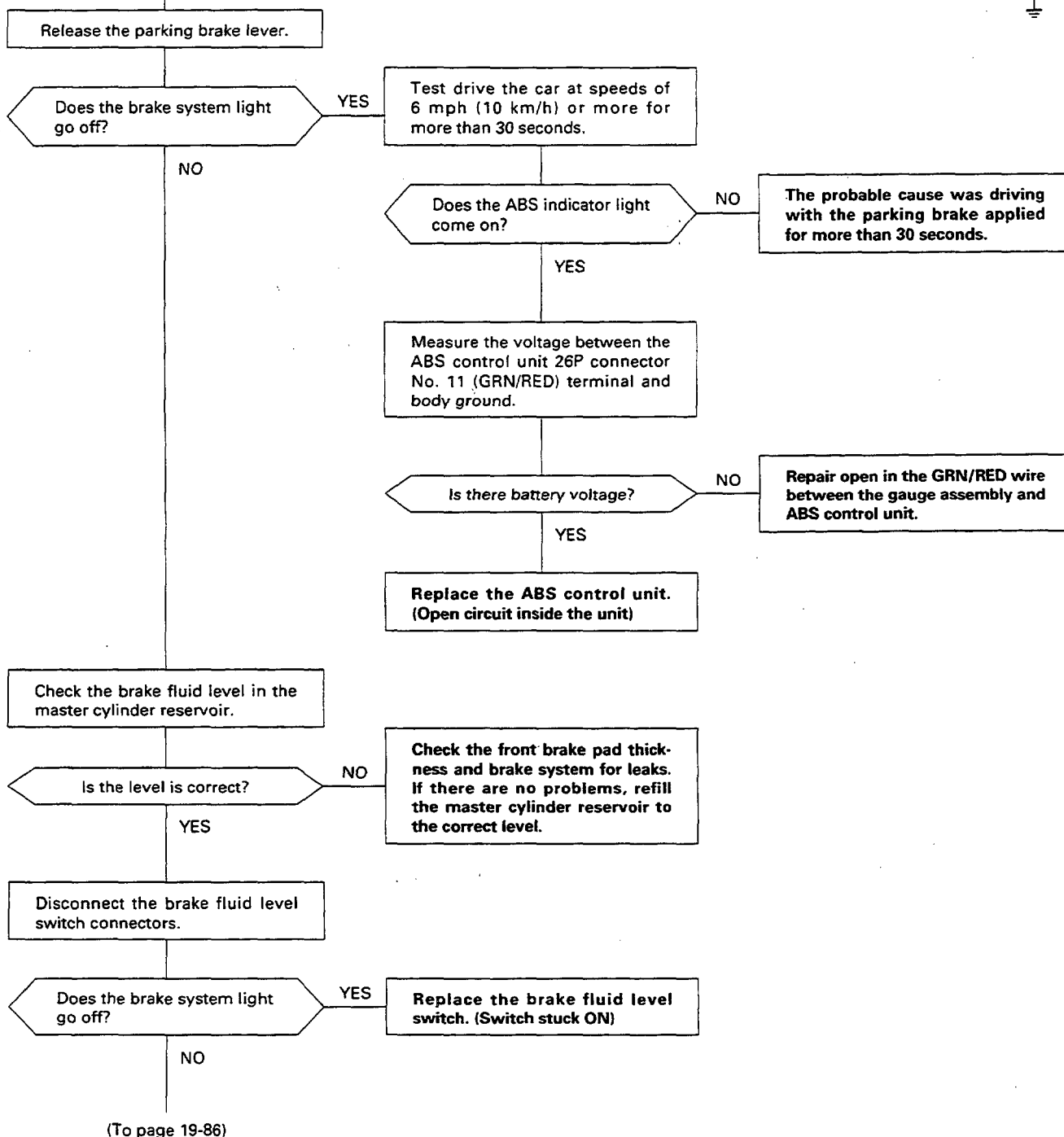
WIRE SIDE OF FEMALE TERMINALS

(From page 19-83)

ABS CONTROL UNIT 26P CONNECTOR

1	2	3	4	5	6	7	8	9	10	11	12	13
14	15	16	17	18	19	20	21	22	23	24	25	26

WIRE SIDE OF FEMALE TERMINALS



(cont'd)

Troubleshooting

Parking Brake (cont'd)

(From page 19-85)

