



## Reassembly

### ⚠ WARNING

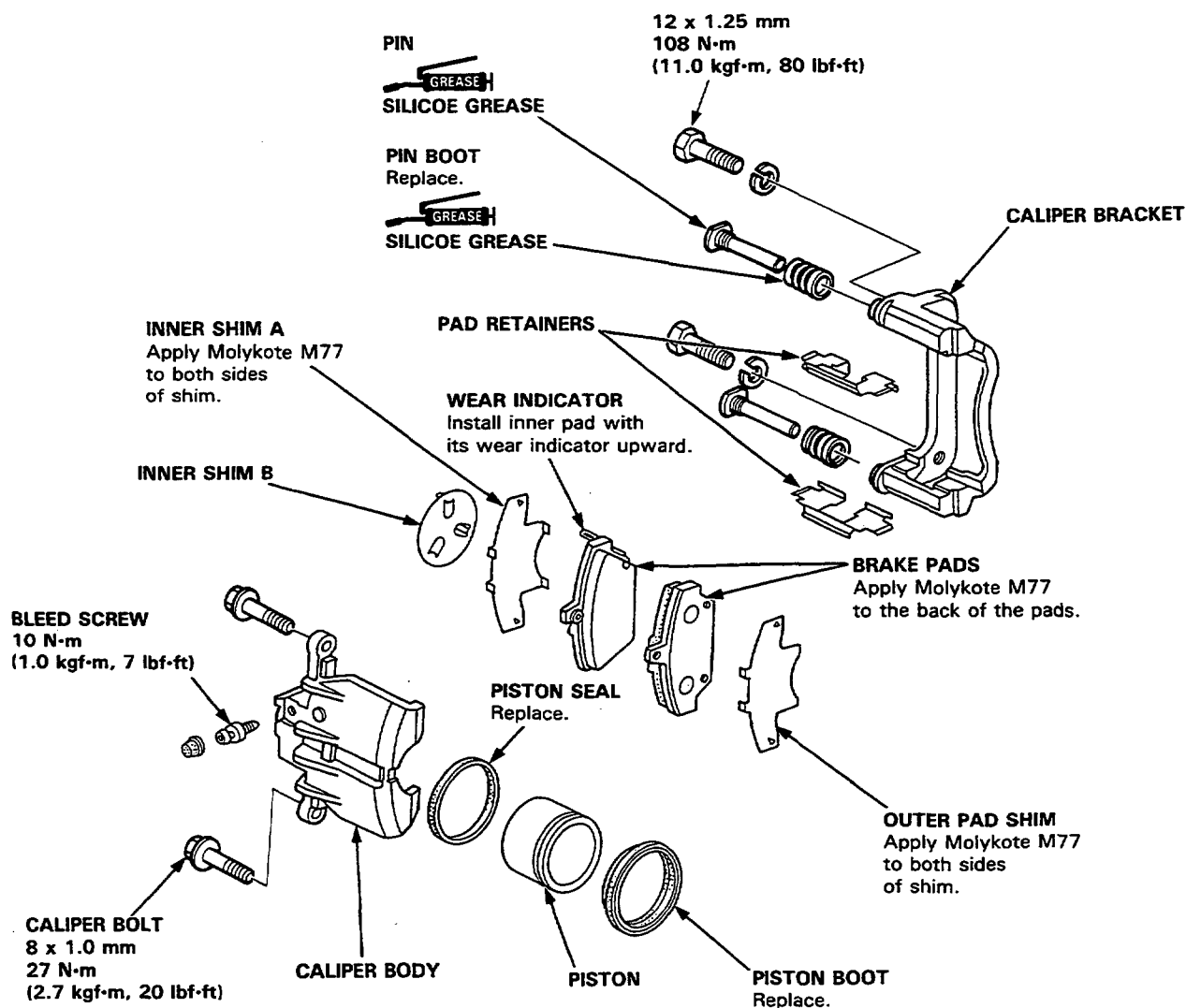
- Never use an air hose or dry brush to clean brake assemblies.
- Use a vacuum cleaner to avoid breathing brake dust.
- Contaminated brake discs or pads reduce stopping ability.
- When reusing the pads, always reinstall the brake pads in their original positions to prevent loss of braking efficiency.

### CAUTION:

- Do not spill brake fluid on the car; it may damage the paint; if brake fluid does contact the paint, wash it off immediately with water.
- Clean all parts in brake fluid and air dry; blow out all passages with compressed air.
- Before reassembling, check that all parts are free of dust and other foreign particles.
- Replace parts with new ones whenever specified to do so.
- Make sure no dirt or other foreign matter is allowed to contaminate the brake fluid.
- Do not mix different brands of brake fluid as they may not be compatible.
- Do not reuse the drained fluid. Use only clean DOT 3 or 4 brake fluid.

### NOTE:

- Coat piston and caliper bore with clean brake fluid.
- Replace all rubber parts with new ones whenever disassembled.

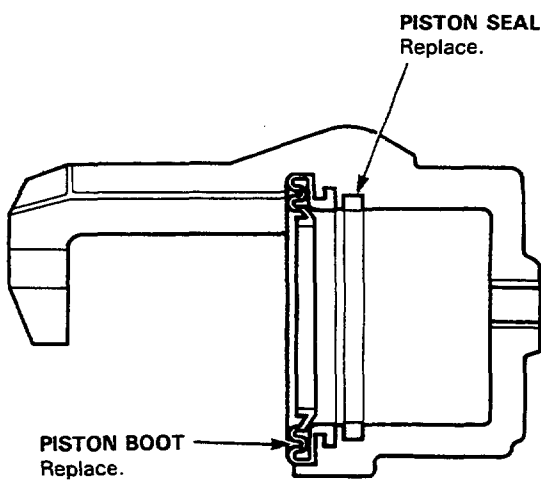


# Front Brake Caliper

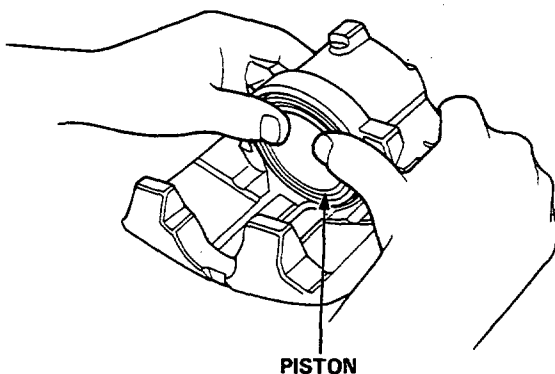
## Reassembly (cont'd)

1. Clean the piston and caliper bore with brake fluid, and inspect for wear or damage.
2. Coat a new piston seal with assembly fluid (BRITISH PETROLEUM BREOX BCF 11S), and install the seal in the cylinder groove.
3. Apply assembly fluid (BRITISH PETROLEUM BREOX BCF 11S) to the sealing lips and inside of a new piston boot, and install the boot in the cylinder groove.

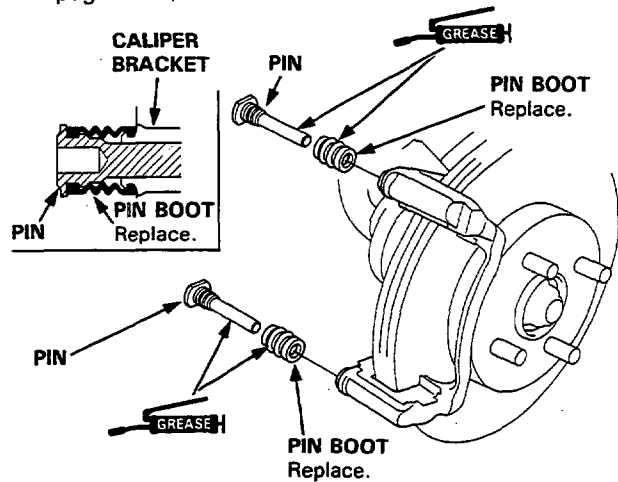
**CAUTION:** Be careful not to damage the caliper cylinder wall.



4. Lubricate the caliper cylinder and piston with brake fluid, then install the piston in the cylinder with the dished end facing in.

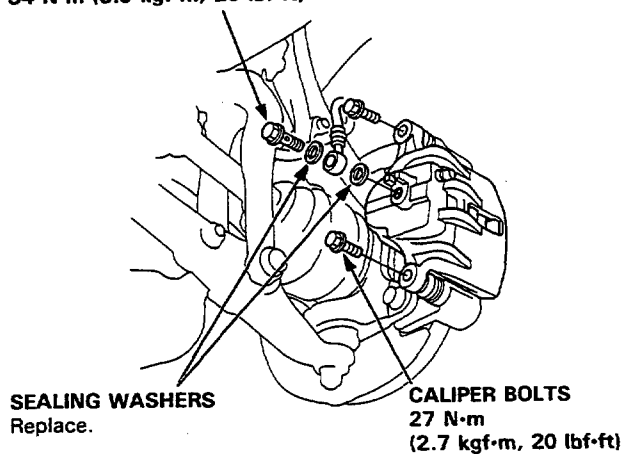


5. Apply the silicone grease to sliding surface of the pins and inside of the new pin boots.
6. Install the pin boots into the groove in the caliper bracket properly.
7. Insert the pins into the caliper bracket.
8. Install the pin boots into the groove in pins properly.
9. Install the brake pads in their original positions (see page 19-8).



10. Connect the brake hose to the caliper with new sealing washers, and tighten the banjo bolt.
11. Tighten the caliper bolts.

**BANJO BOLT**  
34 N·m (3.5 kgf·m, 25 lbf·ft)



12. Fill the brake reservoir and bleed the brake system (see page 19-6).
13. After installation, check for leaks at hose and line joints or connections, and retighten if necessary.