

# WRX WRX STI

## 2015 Quick Reference Guide



**SUBARU**

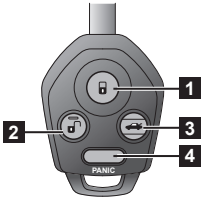
*Confidence in Motion*



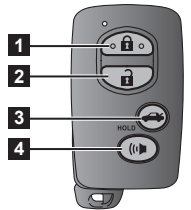
# BASIC OPERATION

## Lock / Unlock doors

### Remote keyless entry system



Remote transmitter key



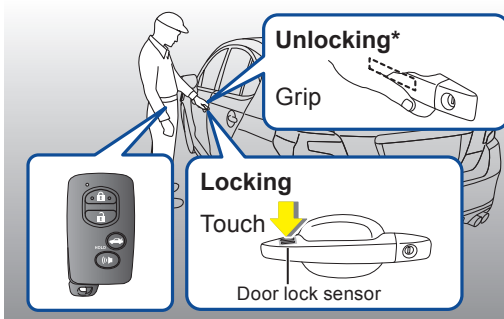
Access key

- 1** All doors will be locked.
- 2** The driver's door will be unlocked. (To unlock all doors, briefly press the button a second time within 5 seconds.)
- 3** Trunk lid will be opened.
- 4** The horn will sound and the hazard warning will flash.

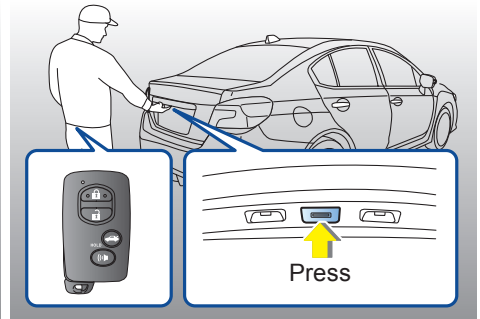
### Keyless access function (if equipped)

All doors and trunk will be locked / unlocked by the following procedures carrying the access key on your person. (The driver should always carry the access key.)

#### Side door (front door handles only):



#### Opening Trunk:

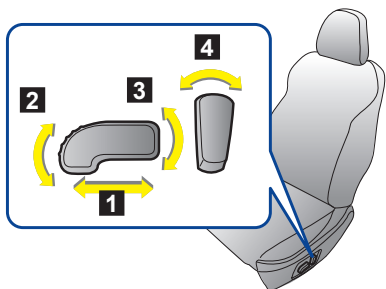


\*Grip the driver's door handle to unlock the driver's door. Grip the front passenger's door handle to unlock all doors.

## Adjustable components

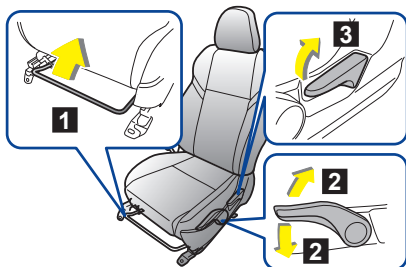
### Front seat

#### Power seat (Driver's seat-if equipped)



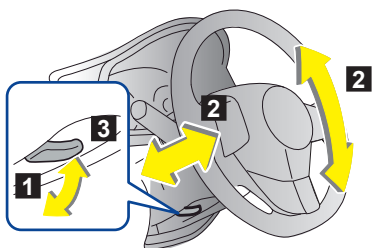
- 1 Forward and backward adjustment
- 2 Seat cushion angle
- 3 Seat height adjustment
- 4 Seatback reclining

#### Manual seat (if equipped)



- 1 Forward and backward adjustment
- 2 Seat height adjustment (Driver's seat only)
- 3 Seatback reclining

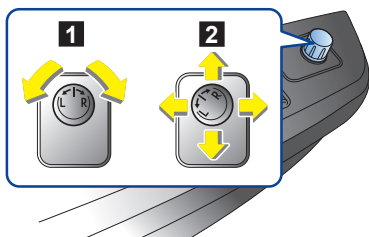
### Tilt / telescopic steering wheel



- 1 Adjust the seat position and pull the tilt/telescopic lock lever down.
- 2 Move the steering wheel to the desired level.
- 3 Pull the lever up to lock the steering wheel in place.

Make sure that the steering wheel is securely locked by moving it up and down, and forward and backward.

### Remote control mirror switch

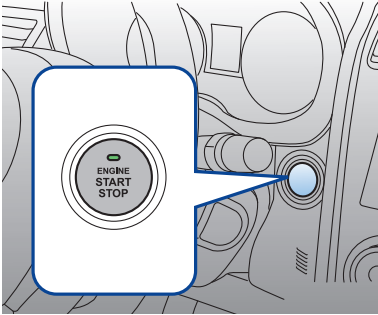


Ignition switch must be in **ACC** or **ON**.

- 1 Select side to adjust.
- 2 To adjust the mirror, move switch in direction of desired movement.

# Start / Stop Engine

## Push-button ignition switch (if equipped)



### Starting engine

1. Carry the access key, and sit in the driver's seat.
2. Apply the parking brake.
3. Shift the select lever in the **P** position. The engine can also start when the select lever is in the **N** position, however, for safety reasons, start in the **P** position.
4. Depress the brake pedal until the operation indicator on the push-button ignition switch turns green. When starting with the select lever in the **N** position, the indicator does not turn green.
5. While depressing the brake pedal, press the push-button ignition switch.

### Stopping engine

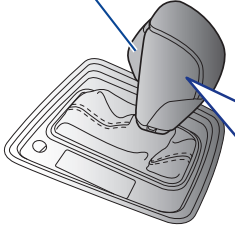
1. Stop the vehicle completely.
2. Move the selector lever to the **P** position.
3. Press the Push-button Ignition Switch.

Every time the button is pressed without depressing the brake pedal, the power is switched in the sequence of **OFF→ACC→ON→OFF**.

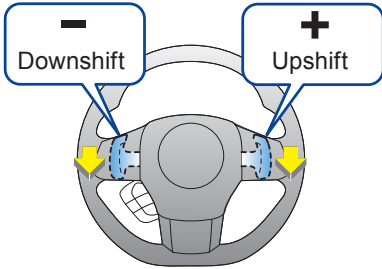
# Transmission

## Continuously variable transmission (if equipped)

Select lever button



→ With the brake pedal depressed, shift while pressing the button in  
→ Shift while pressing the button in  
→ Shift without pressing the button

A diagram of the gear shifter's internal mechanism. It shows a vertical column of gears labeled P (Park), R (Reverse), N (Neutral), D (Drive), and M (Manual). Colored arrows indicate shift directions: a pink arrow points up from D to P, an orange arrow points up from D to R, and a green arrow points down from D to M. A legend to the right explains the actions: a pink arrow indicates shifting with the brake pedal depressed while pressing the button; an orange arrow indicates shifting while pressing the button; and a green arrow indicates shifting without pressing the button.

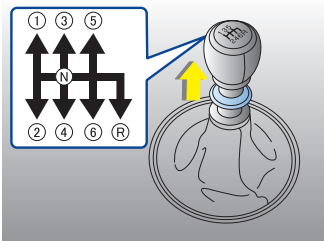
### M = Manual mode

With the vehicle either moving or stationary, move the select lever from the **D** position to the **M** position to select the manual mode.

### Shift paddle;

Gearshifts can be performed using the shift paddle behind the steering wheel. To upshift to the next higher gear position, pull the shift paddle that has + indicated on it. To downshift to the next lower gear position, pull the shift paddle that has - indicated on it.

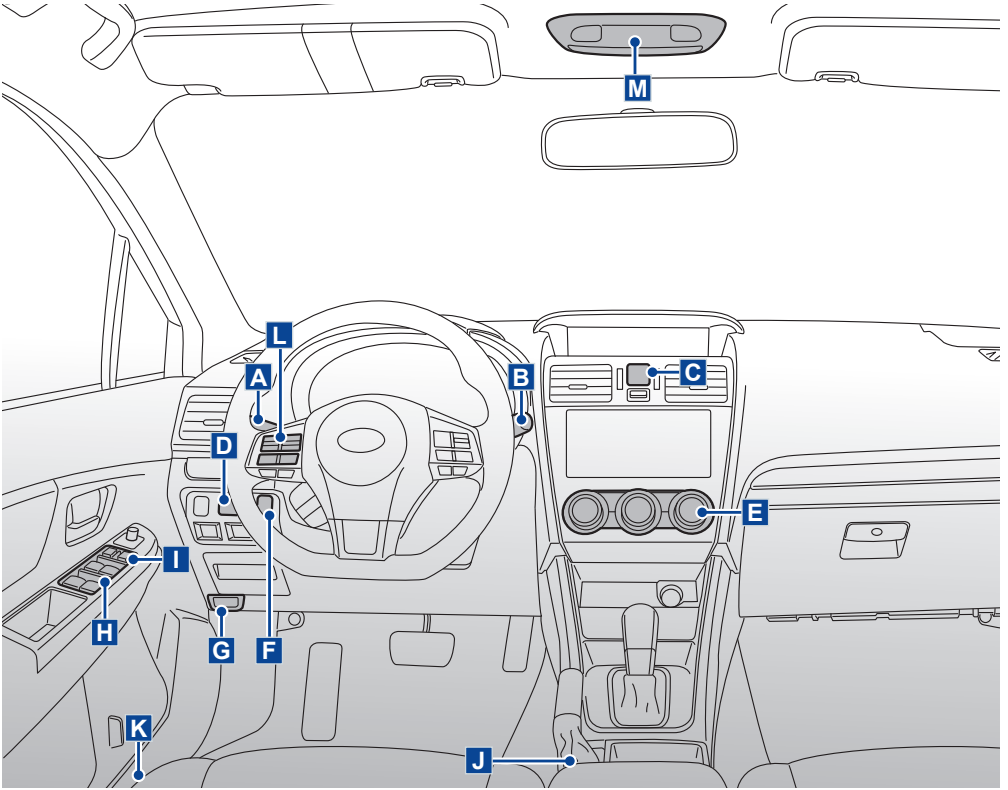
## Manual transmission (if equipped)



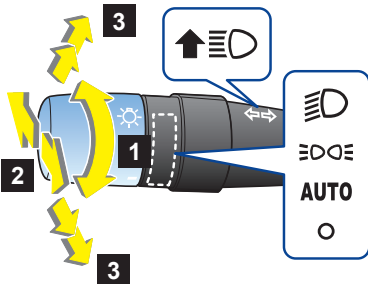
You must raise the slider and hold it in that position before you can move the shift lever to the **R** position.

To change gears, fully depress the clutch pedal, move the shift lever, and gradually let up on the clutch pedal.

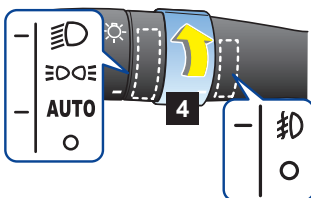
# DRIVER'S AREA





## A Headlights / Turn signal / Fog light (if equipped)



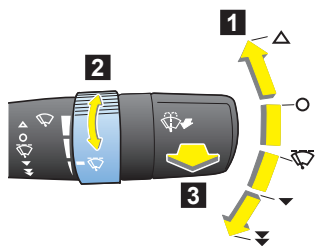
- 1 Headlights
- 2 Headlight flasher, High/ low beam change
- 3 Turn signal



### 4 Fog lights (if equipped)

To turn on, rotate dial to  .  
 Front fog lights operate only when headlight switch is in:  
 -  position.  
 - **AUTO** position and the headlights are on.

## B Windshield wiper and washer



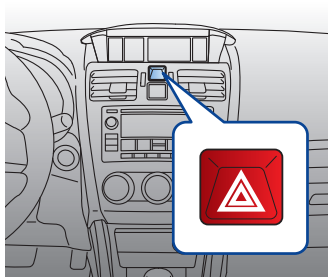
### 1 Wiper

- △ : Mist (for a single wipe)
- : Off
- ⏸ : Intermittent
- ▼ : Low speed
- ⏏ : High speed

### 2 Intermittent interval

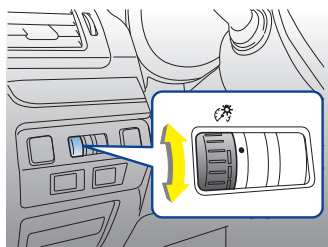
### 3 Washer

## C Hazard warning flasher



To turn on, press the button.  
Use in emergency conditions.

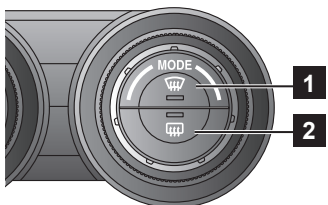
## D Illumination brightness control



To adjust brightness of the instrument panel illumination, turn dial.

When the control dial is turned fully upward to ● position, the illumination brightness becomes the maximum and the automatic dimming function does not work at all.

## E Defroster button / Rear window defogger button



### 1 Defroster button:

Press this button to defrost windshield.

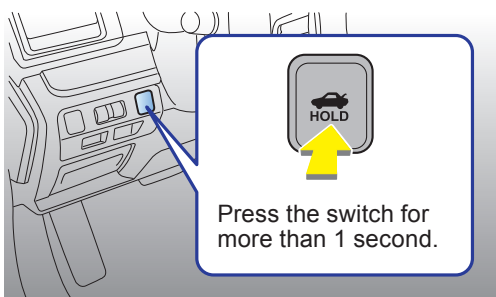
### 2 Rear window defogger button:

Press the button to turn on rear window defogger, outside mirror defogger or wiper deicer.

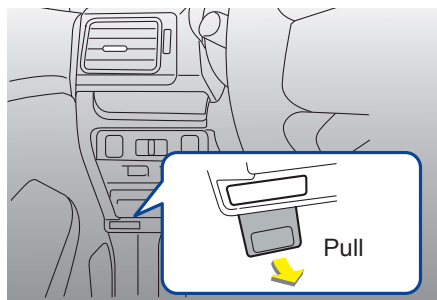
The function will automatically shut off after approximately 15 min.

The illustration of the print is Type A.

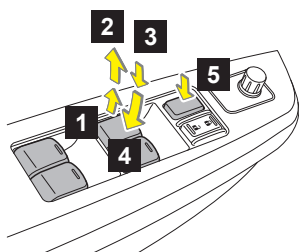
## F Trunk lid opener switch



## G Hood release knob

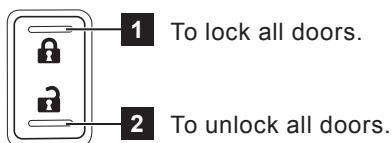


## H Power windows

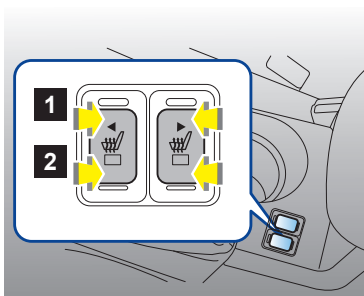


- 1 Closing
- 2 One-touch auto up (Driver's side only)
- 3 Opening
- 4 One-touch auto down (Driver's side only)
- 5 Lock switch

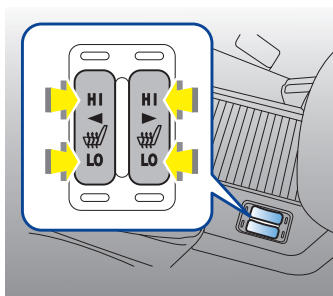
## I Power door locking switch



## J Seat heater



Type A (WRX)

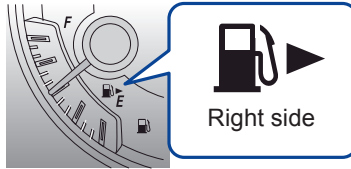
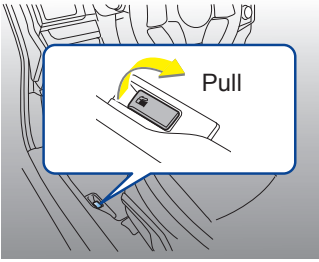


Type B (WRX STI)

- 1 **HIGH (HI):**  
Rapid heating.
- 2 **LOW (LO):**  
Normal heating.

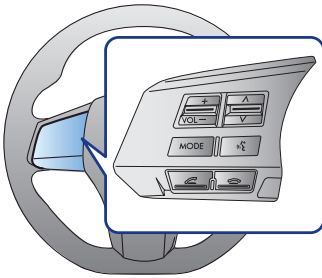


## K Fuel filler lid release lever



This indicates that the fuel filler door (lid) is located on the right side of the vehicle.

## L Audio control buttons



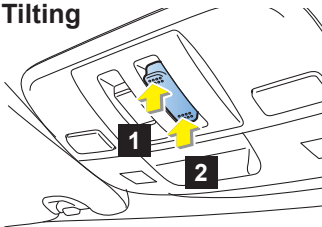
These buttons allow the driver to control audio functions without taking his/her hands off the steering wheel.



**For details and preparation, please refer to your Owner's Manual.**

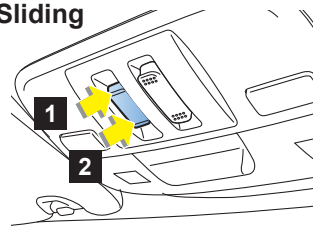
## M Sunroof switch (if equipped)

### Tilting



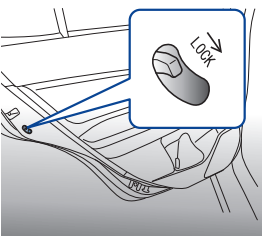
- 1 Raise
- 2 Lower

### Sliding



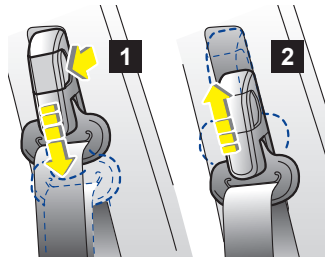
- 1 Open
- 2 Close

## Child safety locks



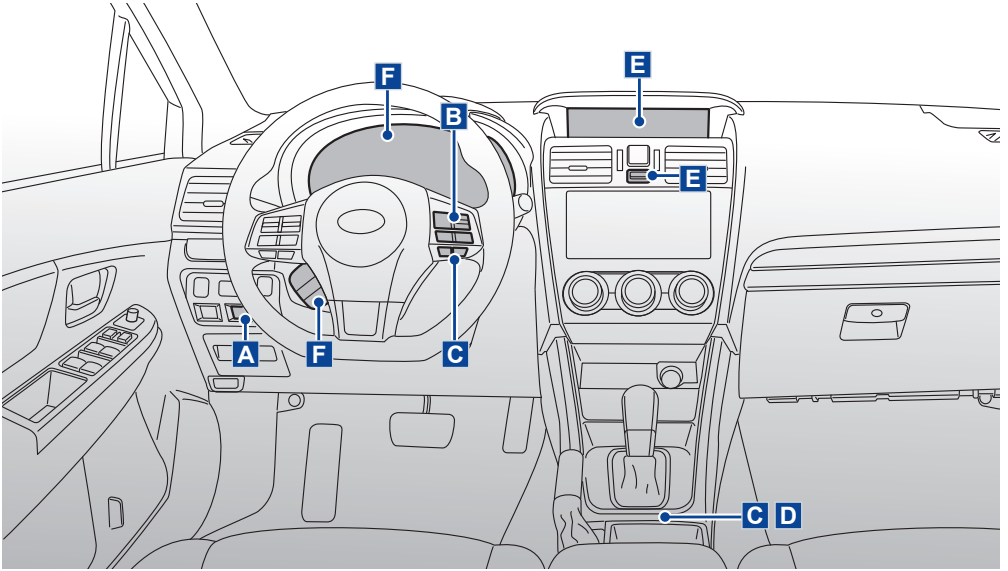
Located on the edge of the rear doors. While lever is in the lock position, rear door cannot be opened from the inside.

## Front seatbelt anchor height

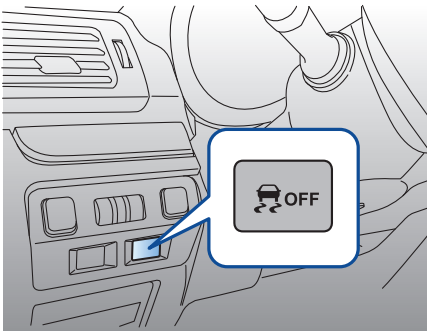


- 1 **To lower:**  
Pull the release knob and slide anchor down.
- 2 **To rise:**  
Slide anchor up.

# VEHICLE PERFORMANCE FUNCTIONS



## A Vehicle Dynamics Control OFF switch



Indicator lights on the combination meter.



Vehicle Dynamics Control mode



Vehicle Dynamics Control OFF mode



Traction mode



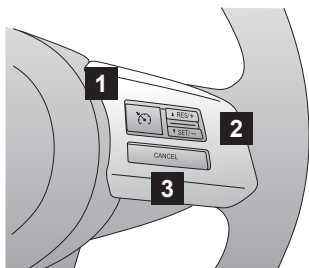
Deactivating the Vehicle Dynamics Control system facilitates the following operations:

- a standing start on a steeply sloping road with a slippery surface
- extrication of the vehicle when its wheels are stuck in mud or deep snow

Deactivation should not be used except when absolutely necessary.

Please refer to the Owner's Manual as to when Vehicle Dynamics Control should be deactivated.

## B Cruise control



Cruise control enables you to maintain a constant vehicle speed without holding your foot on the accelerator pedal and it is operative when the vehicle speed is 40 km/h or more.

- 1 Cruise control main button:** To activate and deactivate
- 2 RES/SET switch**
  - ▲RES/+ side: To increase speed
  - ▼SET/- side: To set speed / To decrease speed
- 3 CANCEL button:** To temporarily cancel



### Cruise control indicator

The cruise control main button is pressed to activate the cruise control function.

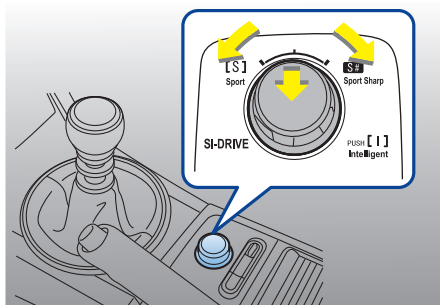


### Cruise control set indicator

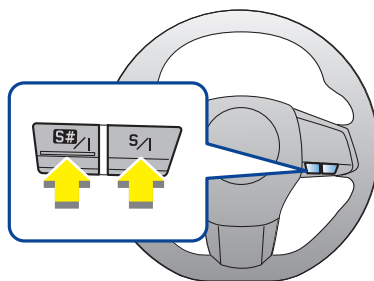
The vehicle speed has been set to use the cruise control function.

## C SI-DRIVE switches (if equipped)

This system consists of three modes: Intelligent (I), Sport (S), and Sport Sharp (S#). By operating the SI-DRIVE switches & selector, the character of the power unit changes.



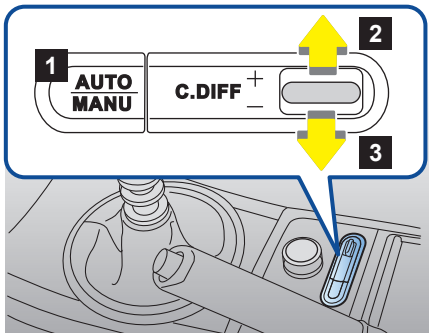
SI-DRIVE selector (STI models)



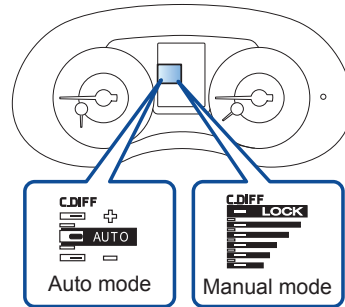
SI-DRIVE switches

- Intelligent (I) mode** : This mode is ideal for smooth, efficient performance driving.
- Sport (S) mode** : This mode is ideal for all-around performance driving.
- Sport Sharp (S#) mode** : This mode is ideal for maximum performance driving.

## D Driver's Control Center Differential (DCCD) (STI models)



DCCD indicator



The Driver's Control Centre Differential allows you to freely change the degree of limitation of the limited slip differential (LSD) torque of the vehicle's center differential.

**1 AUTO-MANU switch:** Press the switch from auto mode to manual mode or vice versa

**Auto mode:**

**2 AUTO[+] mode:** Push the control switch forward.

**3 AUTO[-] mode:** Pull the control switch rearward.

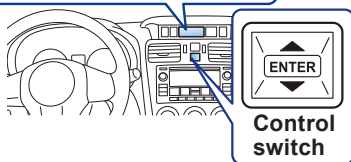
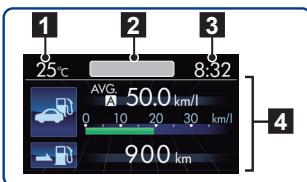
**Manual mode:**

When the **LOCK** indicator light illuminates, the initial LSD torque setting is maximum.

**2 To increase the initial LSD torque:** Push the control switch forward.

**3 To reduce the initial LSD torque:** Pull the control switch rearward.

## E Multi-function display



**1 Outside temperature indicator**

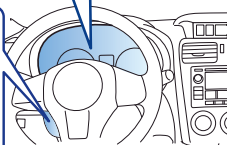
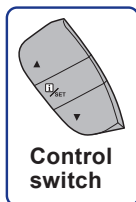
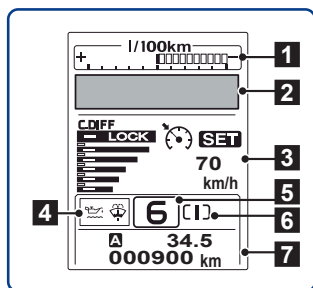
**2 Top display**

**3 Clock**


**4 Driving information display**

**Control switch:** By operating ▲ or ▼ of the control switch, the screens and selection items can be switched. When the **ENTER** button is pushed and held, the item can be selected and set.

## F Multi information display



- 1 ECO gauge
- 2 Warning screen / Basic screen
- 3 Cruise control information / DCCD indicator
- 4 Warning indicator
- 5 Select lever / gear position indicator
- 6 SI-DRIVE indicator light
- 7 Odometer / double trip meter

**Control switch:** By operating ▲ or ▼ of the control switch, the screens and selection items can be switched. When the /SET switch is pulled toward you, the item can be selected and set.

# MAIN WARNING AND INDICATOR LIGHTS

Some warning/indicator lights illuminate for a few seconds in order to check themselves when the ignition switch is turned ON.

## Warning lights

Refer to the Owner's Manual for countermeasures when each warning light comes on. If necessary, consult your authorized Subaru dealer.

### Seatbelt warning



Remind the driver to fasten seatbelt.

### Front passenger's seatbelt warning



Remind the front passenger to fasten seatbelt. Location: next to multi function display.

### Malfunction indicator (Check Engine)



Engine/Emission control system malfunction.

### Charge warning



Charging system malfunction.

### Oil pressure warning



Engine oil pressure is too low.

### Engine oil level warning (except STI)



The engine oil level decreases to the lower limit.

### Rear differential oil temperature warning (STI)



Rear differential oil temperature is too hot.

### SRS airbag system warning



SRS airbag system and/or seatbelt pretensioners malfunction.

### All-wheel drive warning (if equipped)



All-Wheel Drive disengaged / tires of different diameter fitted.

### AT OIL TEMP warning (CVT models)



Transmission fluid temperature is too hot / Transmission control system malfunction.

### Power steering warning (except STI)



The electric power steering system malfunction.

### LED headlight warning (if equipped)



The LED headlights malfunction.

### Automatic headlight beam leveler warning (if equipped)



This light illuminates when the automatic headlight beam leveler does not operate normally.

### Brake system warning



Parking brake on/ Low fluid level/ EBD System malfunction (Anti-lock brake system warning light illuminates simultaneously)/ Vacuum pump system malfunction (except STI)

### Door open warning



Door or trunk lid is ajar.

### Windshield washer fluid warning



The fluid level in the windshield washer fluid tank decreases to the lower limit.

### Low fuel warning



Fuel level low. Refill fuel immediately.

### Access key warning (if equipped)



The access key is not inside the vehicle. For other situation, refer to Owner's Manual.

### ABS warning



Anti-lock Brake System malfunction / EBD System malfunction (Brake System warning light illuminates simultaneously).

### Hill start assist warning / Hill start assist OFF indicator



**Warning:** Hill start assist system malfunction.  
**Indicator:** Hill start assist system OFF.

### Vehicle Dynamics Control warning / Vehicle Dynamics Control operation indicator



**Warning:** Vehicle Dynamics Control system malfunction.  
**Indicator:** Flashes during activation of the skid suppression function and the traction control function.

## Indicator lights

The following indicators show the current status of your car. Refer to the Owner's manual for more information.



Turn signal indicator



Headlight indicator



High beam indicator



Front fog light indicator (if equipped)



Security indicator



Vehicle Dynamics Control OFF indicator



Front passenger's frontal airbag ON/OFF indicator



Cruise control indicator



Cruise control set indicator



Traction mode indicator



REV indicator (STI)



Shift up indicator (STI)



SI-DRIVE mode indicator (if equipped)



DCCD indicator (STI)

subaru.ca

All illustrations, specifications, features and photographs contained in this brochure are based on product information available at the time of its printing, and may not be completely accurate following its publication. Colours shown may vary due to reproduction variations in the printing process, and some vehicle parts cannot be shown in certain photographs. Subaru Canada, Inc. reserves the right to discontinue or make changes at any time, without notice or incurring obligations, to colours, materials, equipment, accessories, features, specifications and models, or to change their prices. Please visit our Web site for the latest information and specifications. For detailed operating and safety information, please consult your Owner's Manual. For complete details on product updates, warranties or the Subaru C.A.R.E. program, please contact your Subaru dealer. WRX, WRX STI and Subaru are registered trademarks. Printed in Canada. © 2014 Subaru Canada, Inc. 2015 model year.



**Environmental Management System (EMS)**  
ISO 14001:2004 certified by SGS  
[www.subaru-earth.com](http://www.subaru-earth.com)

SUBARU CANADA, INC. / FUJI HEAVY INDUSTRIES LTD.