

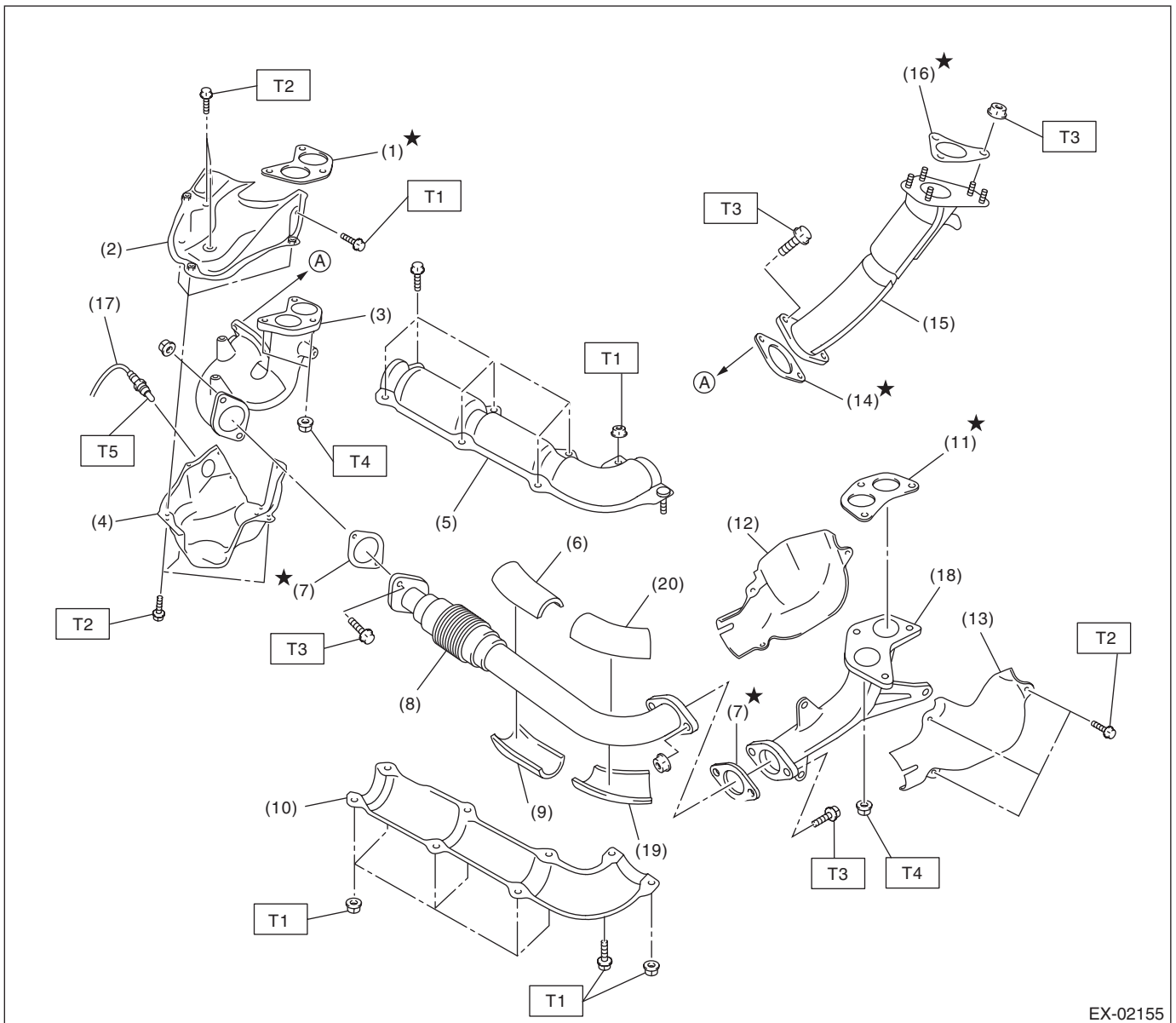
# General Description

EXHAUST

## 1. General Description

A: COMPONENT

### 1. FRONT EXHAUST PIPE



# General Description

EXHAUST

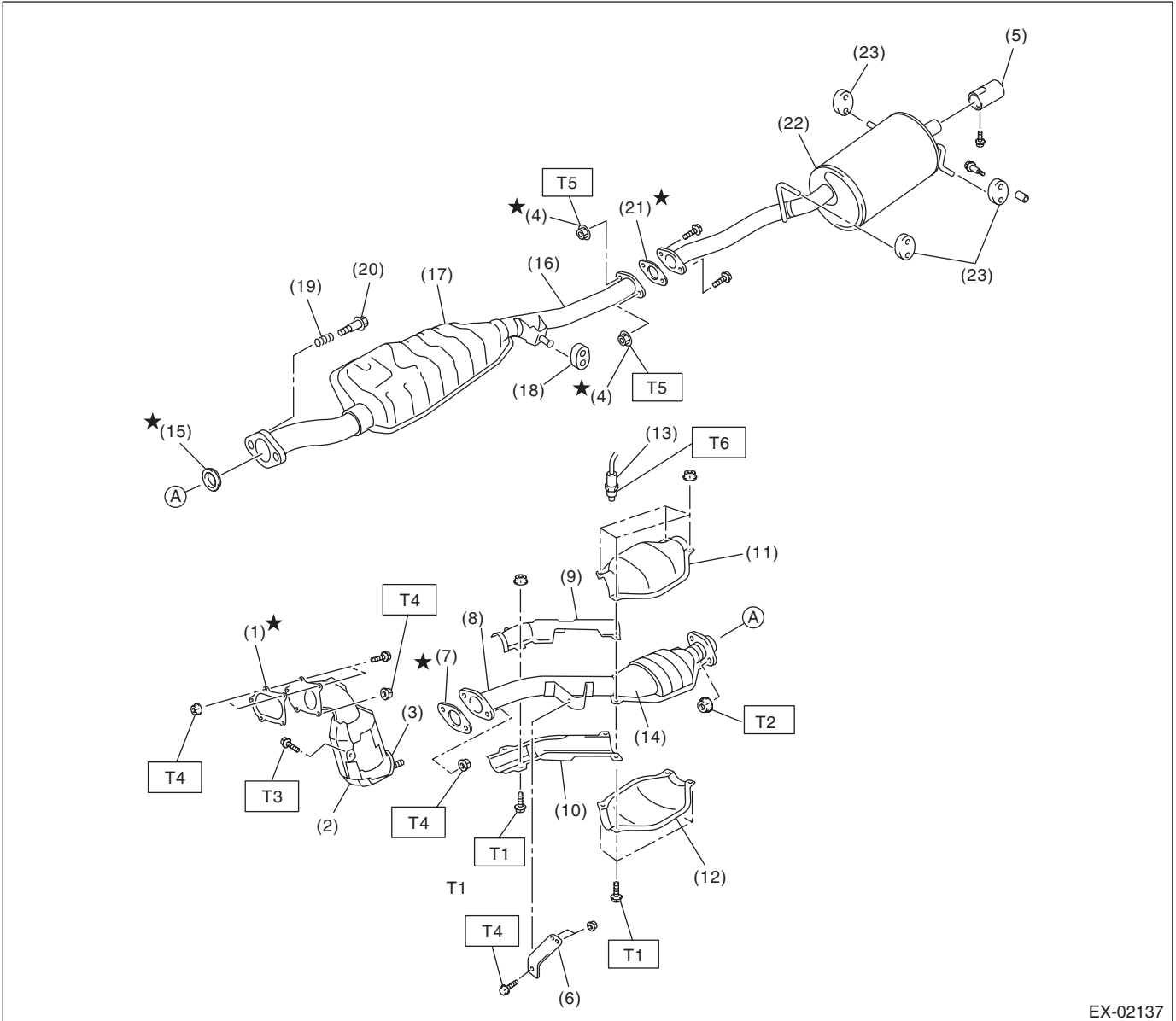
---

(1) Gasket	(10) Front exhaust pipe lower cover	(20) Front exhaust pipe upper insulator (LH)
(2) Exhaust manifold upper cover (RH)	(11) Gasket	
(3) Exhaust manifold (RH)	(12) Exhaust manifold inner cover (LH)	
(4) Exhaust manifold lower cover (RH)	(13) Exhaust manifold outer cover (LH)	<hr/> <b>Tightening torque: N·m (kgf·m, ft·lb)</b>
(5) Front exhaust pipe upper cover	(14) Gasket	<b>T1: 7.5 (0.8, 5.5)</b>
(6) Front exhaust pipe upper insulator (RH)	(15) Turbocharger joint pipe	<b>T2: 19 (1.9, 14.0)</b>
(7) Gasket	(16) Gasket	<b>T3: 35 (3.6, 26.0)</b>
(8) Front exhaust pipe	(17) Front oxygen (A/F) sensor	<b>T4: 40 (4.0, 28.9)</b>
(9) Front exhaust pipe lower insulator (RH)	(18) Exhaust manifold (LH)	<b>T5: &lt;Ref. to FU(H4DOTC)-40, INSTALLATION, Front Oxygen (A/F) Sensor.&gt;</b>
	(19) Front exhaust pipe lower insulator (LH)	<hr/>

# General Description

## EXHAUST

### 2. CENTER AND REAR EXHAUST PIPE, AND MUFFLER



EX-02137

- |   |   |              |
|---|---|--------------|
| (1) Gasket                                | (12) Lower rear catalytic converter cover | (22) Muffler |
| (2) Front catalytic converter             | (13) Rear oxygen sensor                   | (23) Cushion |
| (3) Center exhaust pipe (Front)           | (14) Rear catalytic converter             |              |
| (4) Self-locking nut                      | (15) Gasket                               |              |
| (5) Muffler cutter                        | (16) Rear exhaust pipe                    |              |
| (6) Bracket                               | (17) Chamber                              |              |
| (7) Gasket                                | (18) Cushion                              |              |
| (8) Center exhaust pipe (Rear)            | (19) Spring                               |              |
| (9) Center pipe upper cover (Rear)        | (20) Bolt                                 |              |
| (10) Center pipe lower cover (Rear)       | (21) Gasket                               |              |
| (11) Upper rear catalytic converter cover |   |              |

**Tightening torque: N·m (kgf·m, ft·lb)**

**T1: 13 (1.3, 9.6)**

**T2: 18 (1.8, 13.0)**

**T3: 30 (3.1, 22.4)**

**T4: 35 (3.6, 26.0)**

**T5: 48 (4.9, 35.4)**

**T6: <Ref. to FU(H4DOTC)-43, INSTALLATION, Rear Oxygen Sensor.>**

### **B: CAUTION**

- Wear appropriate work clothing, including a cap, protective goggles and protective shoes when performing any work.
- Remove contamination including dirt and corrosion before removal, installation or disassembly.
- Keep the disassembled parts in order and protect them from dust and dirt.
- Before removal, installation or disassembly, be sure to clarify the failure. Avoid unnecessary removal, installation, disassembly and replacement.
- Be careful not to burn your hands, because each part on the vehicle is hot after running.
- Be sure to tighten fasteners including bolts and nuts to the specified torque.
- Place shop jacks or rigid racks at the specified points.
- Before disconnecting connectors of sensors or units, be sure to disconnect the ground cable from battery.