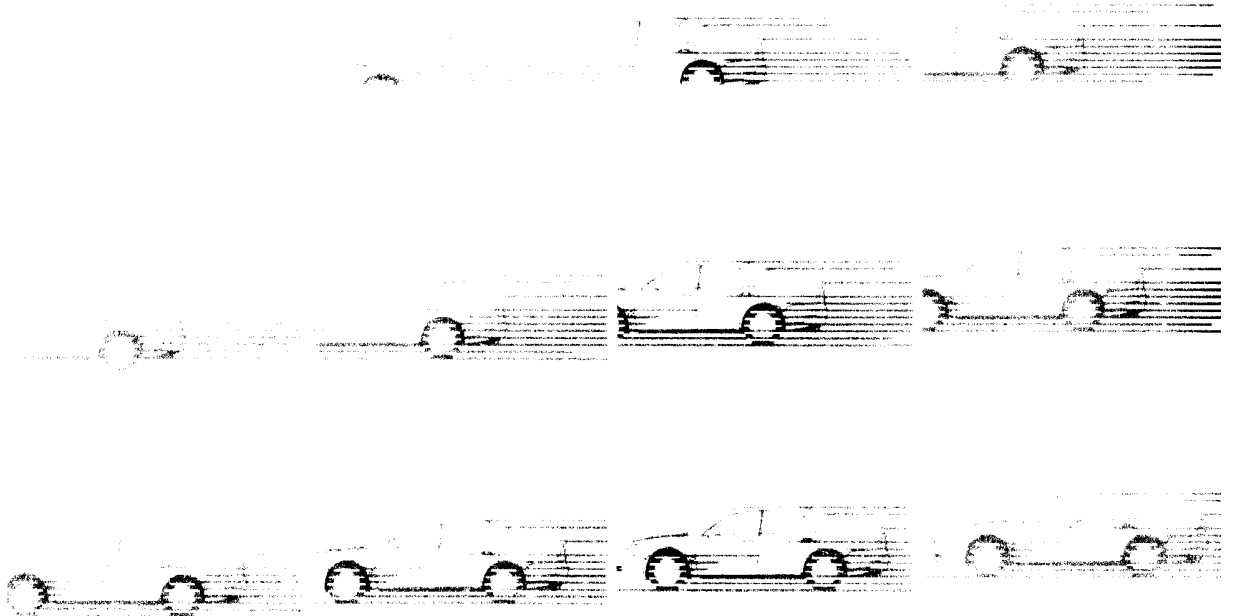
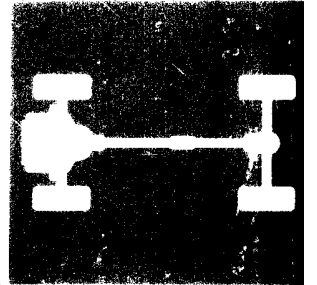




Workshop Manual

chassis

SIGMA '97



Pub. No. PWGE 9610

MITSUBISHI SIGMA

WORKSHOP MANUAL

FOREWORD

This Workshop Manual contains procedures for service mechanics, including removal, disassembly, inspection, adjustment, reassembly and installation. Use the following manuals in combination with this manual as required.

TECHNICAL INFORMATION MANUAL
PYGE9603

WORKSHOP MANUAL
BODY REPAIR MANUAL PBGE9608
ENGINE GROUP PWEE□□□□
(Looseleaf edition)
ELECTRICAL WIRING PHGE9701

PARTS CATALOGUE □□□□□□

All information, illustrations and product descriptions contained in this manual are current as at the time of publication. We, however, reserve the right to make changes at any time without prior notice or obligation.



GROUP INDEX

General	00
Engine	11
Engine Lubrication	12
Fuel	13
Engine Cooling	14
Intake and Exhaust	15
Engine Electrical	16
Engine and Emission Control	17
Clutch	21
Manual Transmission	22
Automatic Transmission	23
Front Axle	26
Rear Axle	27
Wheel and Tyre	31
Power Plant Mount	32
Front Suspension	33
Rear Suspension	34
Service Brakes	35
Parking Brakes	36
Steering	37
Body	42
Exterior	51
Interior and Supplemental Restraint System (SRS)	52
Chassis Electrical	54
Heater, Air Conditioning and Ventilation	55