

# INTERIOR

## CONTENTS

E52AA--

<b>SPECIFICATIONS</b> .....	<b>2</b>	<b>HEADLINING</b> .....	<b>8</b>
General Specifications .....	2	<b>INSIDE REAR VIEW MIRROR</b> .....	<b>9</b>
Service Specifications .....	2	<b>FRONT SEAT*</b> .....	<b>10</b>
Adhesives .....	2	<b>REAR SEAT</b> .....	<b>20</b>
<b>SPECIAL TOOLS</b> .....	<b>3</b>	<b>FRONT SEAT BELT*</b> .....	<b>22</b>
<b>INSTRUMENT PANEL*</b> .....	<b>3</b>	<b>REAR SEAT BELT</b> .....	<b>23</b>
<b>FLOOR CONSOLE*</b> .....	<b>6</b>		
<b>TRIMS</b> .....	<b>6</b>		

### WARNINGS REGARDING SERVICING OF SUPPLEMENTAL RESTRAINT SYSTEM (SRS) EQUIPPED VEHICLES

#### WARNING!

- (1) Improper service or maintenance of any component of the SRS, or any SRS-related component, can lead to personal injury or death to service personnel (from inadvertent firing of the air bag) or to the driver and passenger (from rendering the SRS inoperative).
- (2) Service or maintenance of any SRS component or SRS-related component must be performed only at an authorized MITSUBISHI dealer.
- (3) MITSUBISHI dealer personnel must thoroughly review this manual, and especially its GROUP 52B – Supplemental Restraint System (SRS), before beginning any service or maintenance of any component of the SRS or any SRS-related component.

#### NOTE

The SRS includes the following components: impact sensors, SRS diagnosis unit, SRS warning lamp, air bag module, clock spring, and interconnecting wiring. Other SRS-related components (that may have to be removed/installed in connection with SRS service or maintenance) are indicated in the table of contents by an asterisk (\*).

## SPECIFICATIONS

### GENERAL SPECIFICATIONS

E52CA--

Items	Specifications
Heated seats	
Power consumption W [When room temperature is 20°C (68°F)]	
HIGH	43.9
LOW	10.9
Thermostat working temperature	°C (°F)
ON→OFF	35–45 (95–113)
OFF→ON	25–35 (77–95)

### SERVICE SPECIFICATIONS

E52CB--

Items	Specifications
Standard value	
Heated seats	
Seatback heater resistance (between terminals) Ω [When ambient temperature is 20°C (68°F)]	Approx. 5.8
Seat cushion heater resistance (between terminals) Ω [When ambient temperature is 20°C (68°F)]	
Between terminals 1 and 3	Approx. 7.1
Between terminals 2 and 3	Approx. 7.4
Between terminals 1 and 2	Approx. 0.4


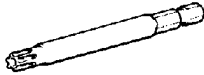
### ADHESIVES

E52CE--

Item	Specified adhesive	Characteristics
Headlining (Front of sunroof opening)	Both-side tape [15 mm (0.6 in.) wide and 0.15 mm (0.006 in.) thick], dry adhesive	Drying adhesive
Front seat Lower rail and nut housing mounting bolts	3M Stud Locking Part No. 4170 or equivalent	Anaerobic sealant

**SPECIAL TOOLS**

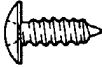





E52DA--

Tool	Number	Name	Use
	MB990784	Ornament remover	Removal of switch, trim, etc.
	MB990826	Torx wrench	Removal and installation of special bolt

**INSTRUMENT PANEL**

E52GAAL

For installation of the instrument panel, the bolts and screws described below are used. They are indicated by symbols in the illustration.

Name	Symbol	Size mm (in.) (D×L)	Colour	Shape	
Tapping screw	A	5×12 (0.20×0.47)	–		
	B	5×16 (0.20×0.62)	–		
	C	5×20 (0.20×0.79)	–		
	D	5×20 (0.20×0.79)	Black		
	Washer assembled screw	E	4×16 (0.16×0.62)	Black	
		F	5×16 (0.20×0.62)	Black	
		G	5×20 (0.20×0.79)	Black	
		H	5×16 (0.20×0.62)	Black	
Washer assembled bolt	I	5×16 (0.20×0.62)	–		
Washer assembled bolt	J	6×16 (0.24×0.62)	–		
	K	6×20 (0.24×0.79)	Black		
Wing nut	L	5 (0.20)	–		
Machine screw	M	4×10 (0.16×0.39)	Black		

19N0001

D=Tread diameter  
L=Effective thread length

REMOVAL AND INSTALLATION

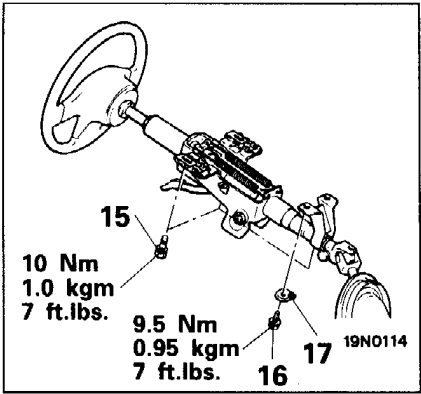
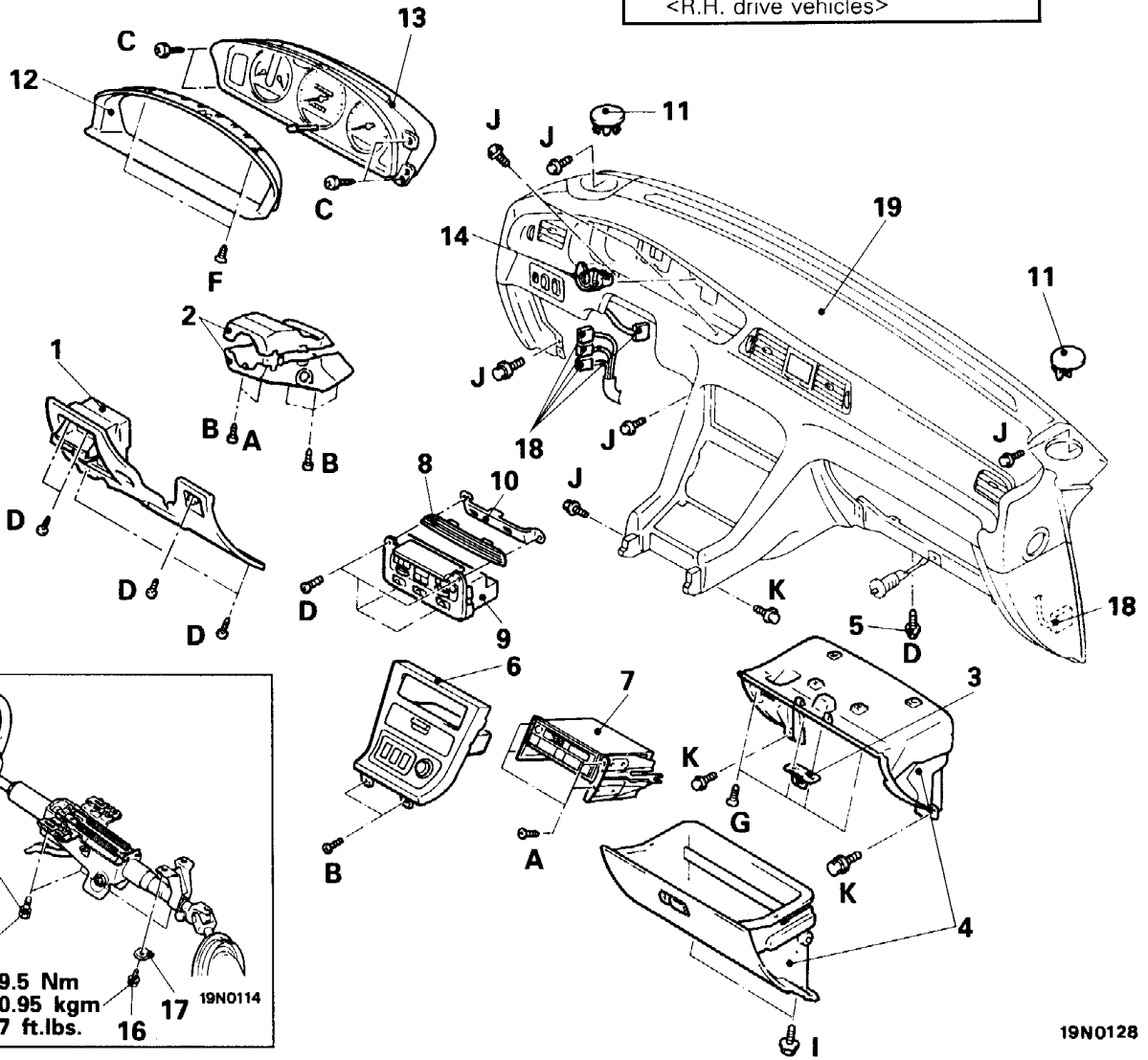
<Vehicles without front passenger's air bag>

**Pre-removal and Post-installation Operation**

- Removal and Installation of Floor Console Assembly (Refer to P.52-6)

**CAUTION: SRS**  
When removing and installing the following parts from vehicles equipped with SRS, do not let it bump against the SRS diagnostic unit or other components.

- Floor console assembly <L.H. drive vehicles>
- Instrument panel assembly <R.H. drive vehicles>



19N0128

**Removal steps**

1. Driver side lower panel
2. Column cover
3. Glove box striker
4. Glove box and glove box outer case
5. Under cover installation screw
6. Audio panel
7. Radio and tape player
8. Heater control garnish
9. Heater control panel assembly
10. Heater control garnish bracket
11. Plug
12. Meter bezel
13. Combination meter
14. Speedometer cable adapter

15. Steering column assembly installation bolts
16. Special bolt
17. Special washer
18. Harness connector
19. Instrument panel assembly



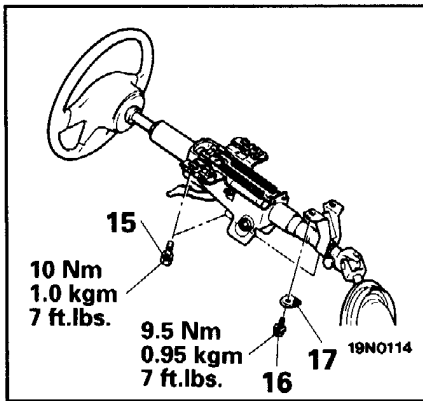
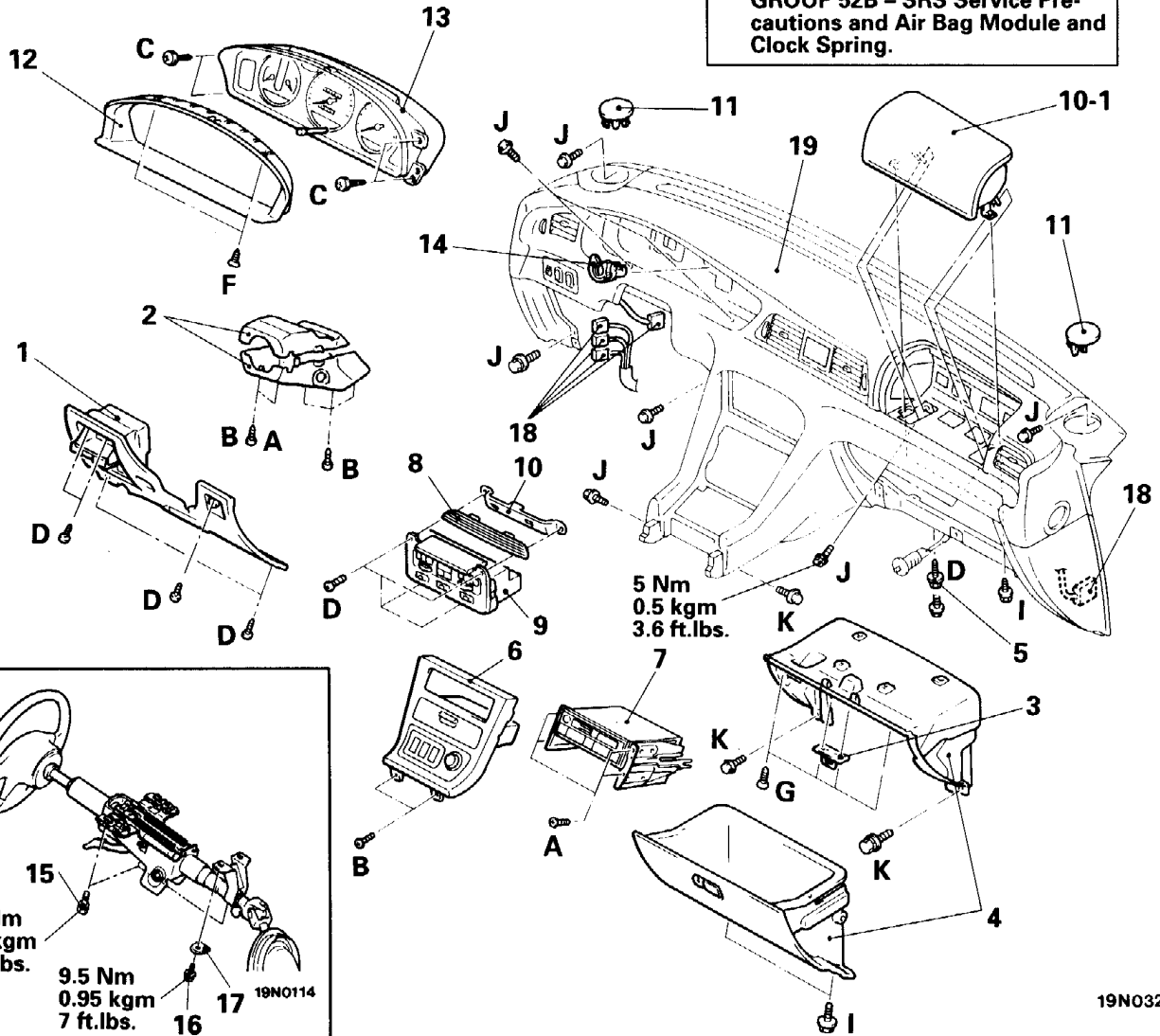
<Vehicles with front passenger's air bag>

**Pre-removal and Post-installation Operation**

- Removal and Installation of Floor Console Assembly (Refer to P.52-6.)

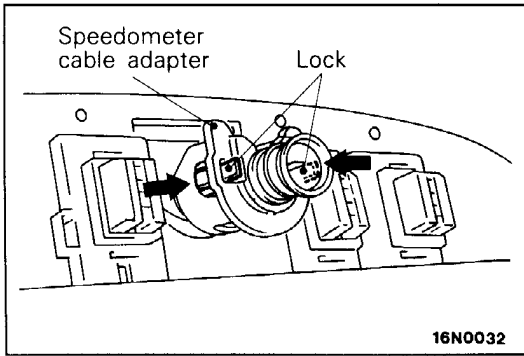
**CAUTION: SRS**

- When removing and installing the floor console assembly from vehicles equipped with SRS, do not let it bump against the SRS diagnostic unit or other components.
- Before removal of front passenger's air bag module, refer to GROUP 52B – SRS Service Precautions and Air Bag Module and Clock Spring.



**Removal steps**

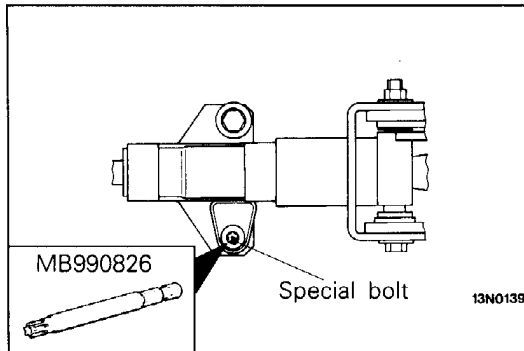
- |   |   |
|---|---|
| 1. Driver side lower panel  | 11. Plug  |
| 2. Column cover   | 12. Meter bezel                                 |
| 3. Glove box striker  | 13. Combination meter                           |
| 4. Glove box and glove box outer case   | 14. Speedometer cable adapter                   |
| 5. Under cover installation screw   | 15. Steering column assembly installation bolts |
| 6. Audio panel  | 16. Special bolt                                |
| 7. Radio and tape player  | 17. Special washer                              |
| 8. Heater control garnish   | 18. Harness connector                           |
| 9. Heater control panel assembly  | 19. Instrument panel assembly                   |
| 10. Heater control garnish bracket  |   |
| 10-1. Front passenger's air bag module (Refer to GROUP 52B – Air bag module and Clock Spring) |   |

**SERVICE POINTS OF REMOVAL**

E52GCAH

**14. REMOVAL OF SPEEDOMETER CABLE ADAPTER**

- (1) Disconnect the speedometer cable at the transmission end of the cable.
- (2) Remove the lock of the speedometer cable adapter from the instrument panel.
- (3) Pull the speedometer cable slightly toward the vehicle interior, and then remove the speedometer cable adapter.

**16. REMOVAL OF SPECIAL BOLT**

Steering column assembly is installed with a special bolt. Remove it by using the special tool.

**SERVICE POINT OF INSTALLATION**

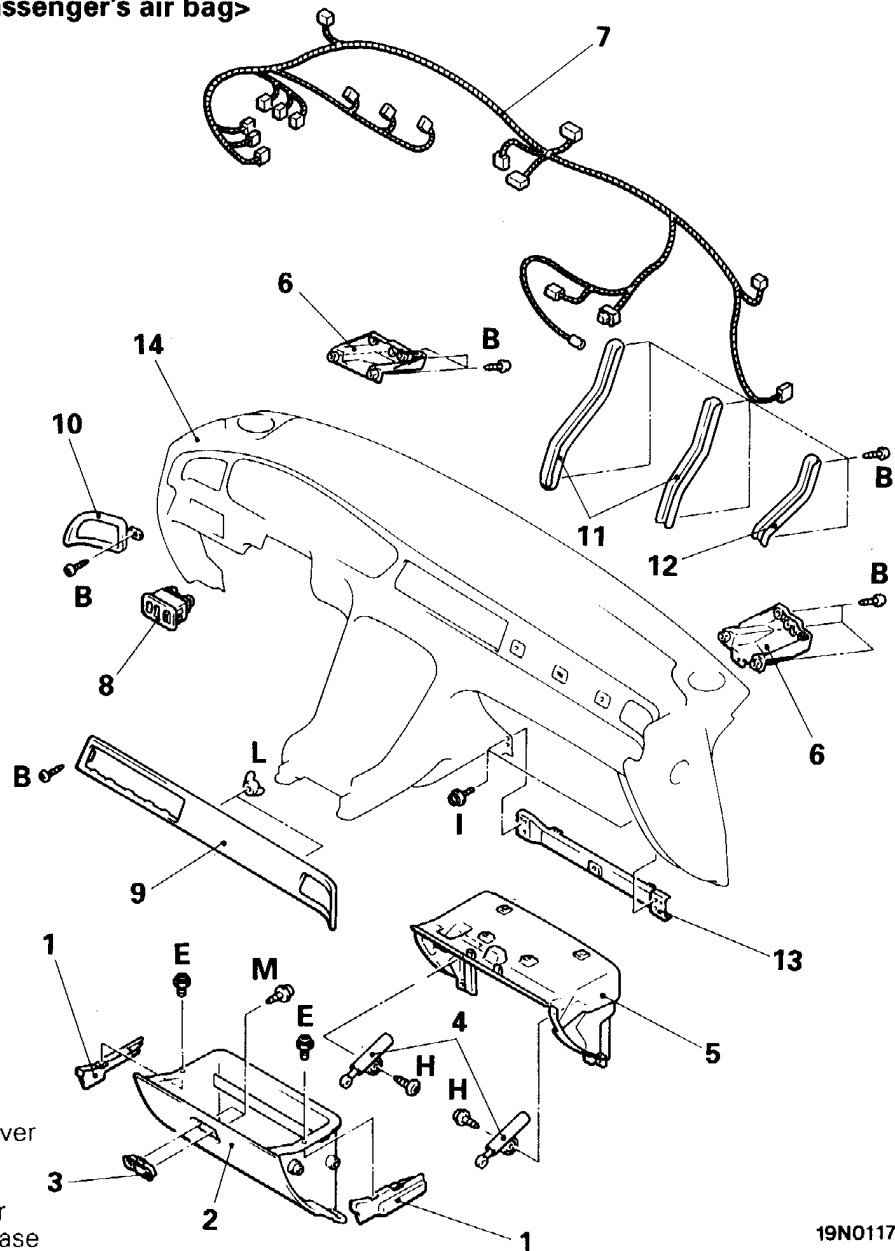
E52GEAH

**16. INSTALLATION OF SPECIAL BOLT**

Tighten the special bolt using the special tool.

**DISASSEMBLY AND REASSEMBLY**

<Vehicles without front passenger's air bag>

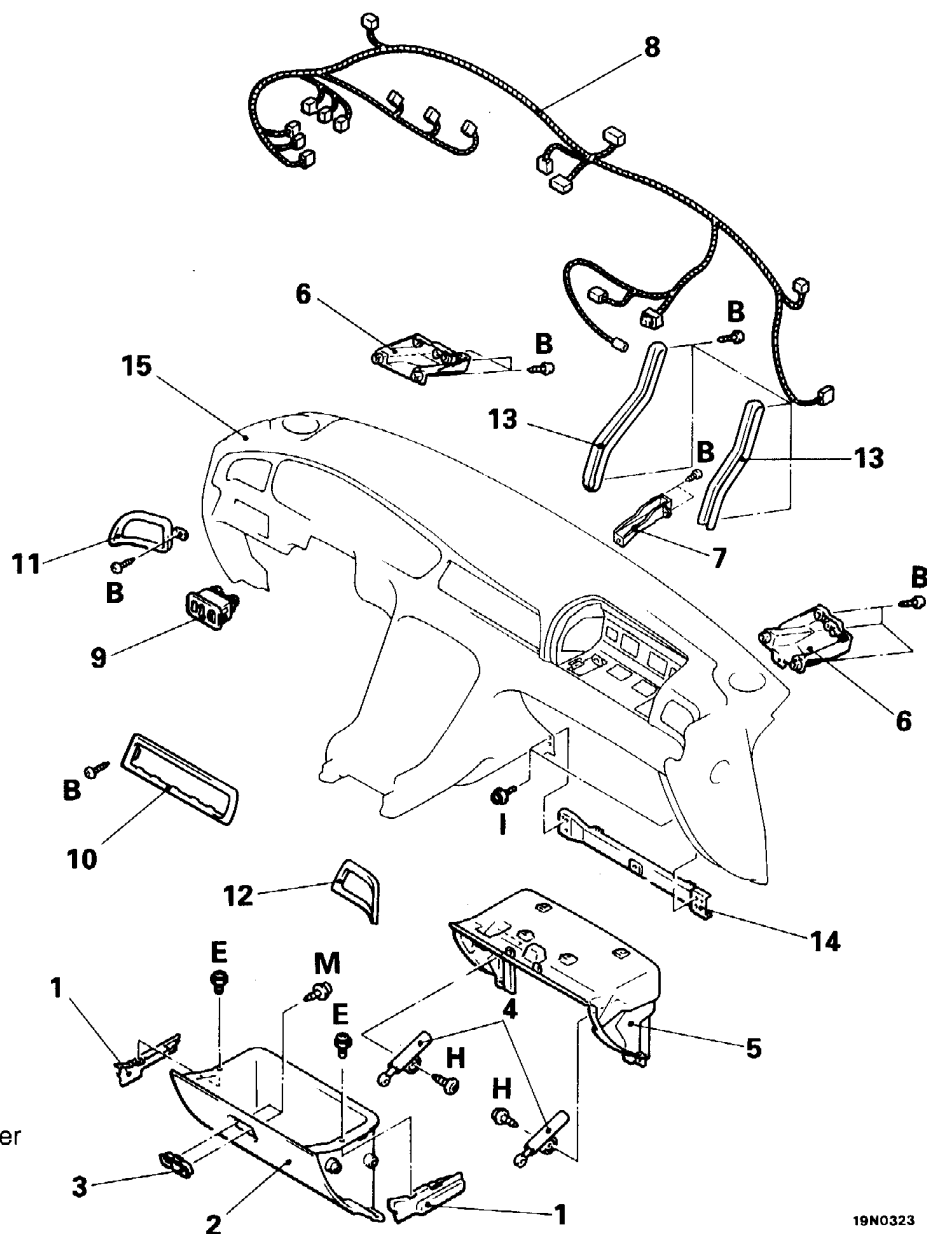


**Disassembly steps**

1. Glove box side cover
2. Glove box
3. Glove box lock
4. Glove box damper
5. Glove box outer case
- Heater ducts } [Refer to GROUP 55 – Ventilators (Instrument Panel)]
- Defroster garnish }
- Photo sensor }
6. Instrument panel support panel
7. Instrument panel wiring harness
8. Instrument panel side switch
- Center air outlet assembly [Refer to GROUP 55 – Ventilators (Instrument Panel)]
9. Instrument trim panel A
10. Instrument trim panel B
- Side air outlet assembly [Refer to GROUP 55 – Ventilators (Instrument Panel)]
11. Instrument panel center reinforcement
12. Instrument panel passenger side reinforcement
13. Glove box frame
14. Instrument panel

19N0117

&lt;Vehicles with front passenger's air bag&gt;

**Disassembly steps**

1. Glove box side cover
2. Glove box
3. Glove box lock
4. Glove box damper
5. Glove box outer case
- Heater ducts } [Refer to GROUP 55 –
- Defroster garnish } Ventilators (Instrument
- Photo sensor } Panel)]
6. Instrument panel support panel
7. Instrument panel center support panel
8. Instrument panel wiring harness
9. Instrument panel side switch
- Center air outlet assembly  
[Refer to GROUP 55 – Ventilators  
(Instrument Panel)]
10. Instrument trim panel, center
11. Instrument trim panel B
12. Instrument trim panel C
- Side air outlet assembly  
[Refer to GROUP 55 – Ventilators  
(Instrument Panel)]
13. Instrument panel center reinforcement
14. Glove box frame
15. Instrument panel

19N0323



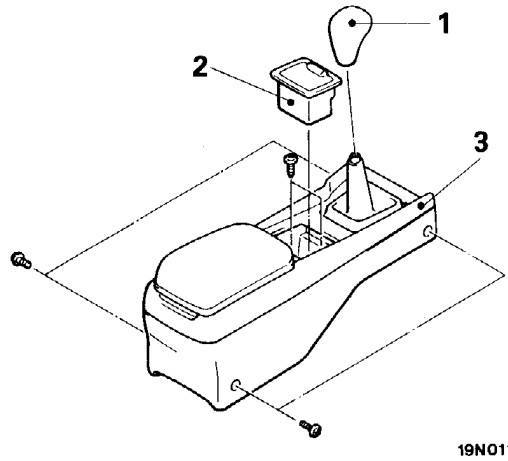
---

NOTES

**FLOOR CONSOLE  
REMOVAL AND INSTALLATION**

E52HA--

**CAUTION: SRS <L.H. drive vehicles >**  
When removing and installing the floor console assembly from vehicles equipped with SRS, do not let it bump against the SRS diagnostic unit or other components.



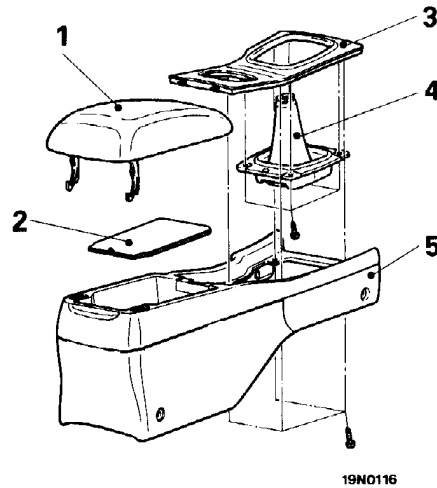
**Removal steps**

1. Shift lever knob <M/T>
2. Ashtray
3. Floor console assembly

19N0118

**DISASSEMBLY AND REASSEMBLY**

E52HE--



**Disassembly steps**

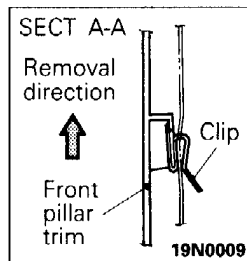
1. Lid assembly
2. Floor console mat
3. Console panel
4. Shift lever boot <M/T>
5. Floor console

19N0116

**TRIMS**

E52JA--

**REMOVAL AND INSTALLATION**



1. Front pillar trim

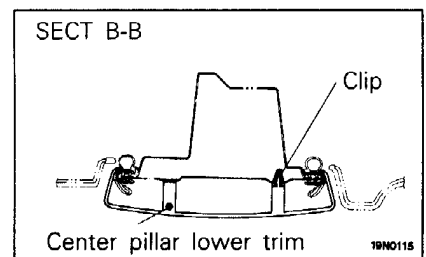
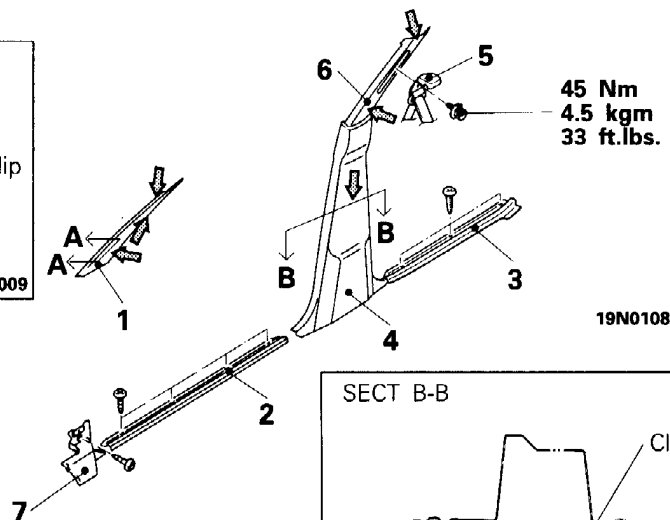
**Center pillar trim removal steps**

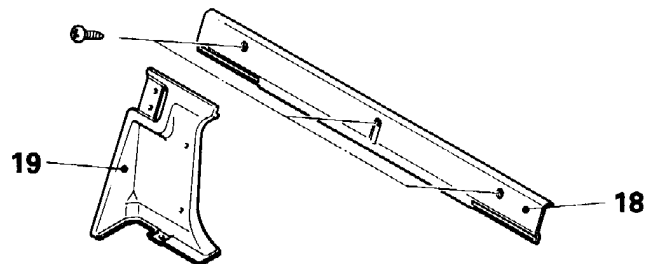
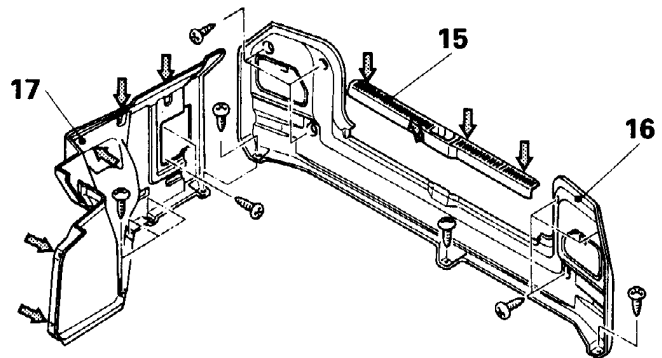
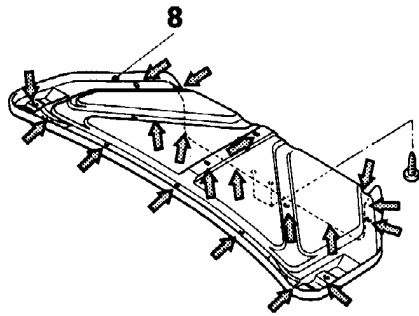
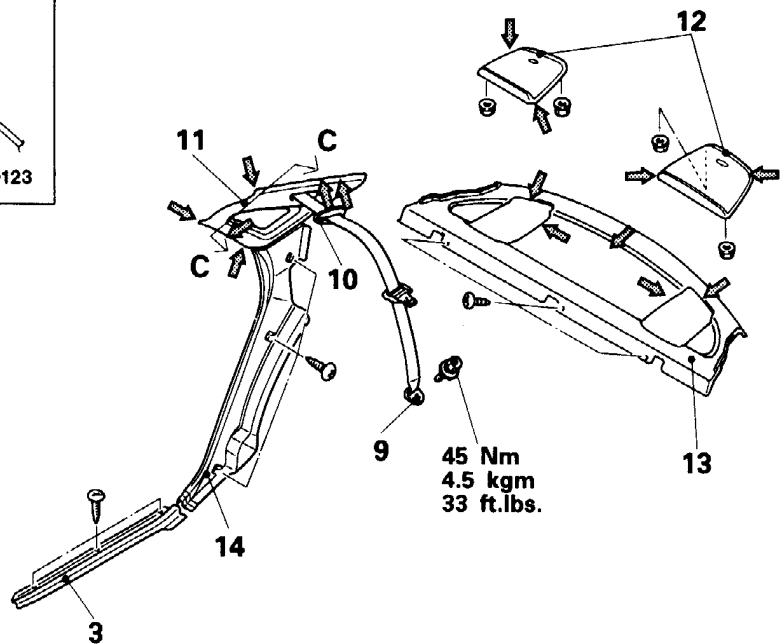
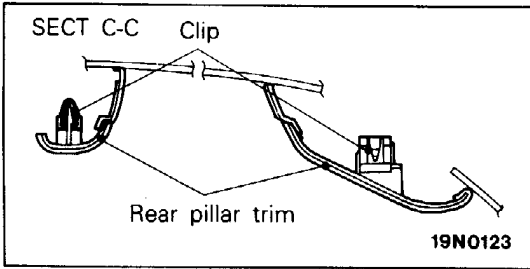
2. Front scuff plate
3. Rear scuff plate
4. Center pillar lower trim
5. Sash guide
6. Center pillar upper trim

**Cowl side trim removal steps**

2. Front scuff plate
7. Cowl side trim

**NOTE**  
←: Location of clip





19N0170

**Rear wheelhouse trim removal steps**

- 3. Rear scuff plate
- Rear seat (Refer to P.52-20.)
- 14. Rear wheelhouse trim

**Trunk trim removal steps**

- 15. Trunk rear trim cover
- 16. Trunk rear trim
- 17. Trunk side trim
- 18. Front shelf cover
- 19. Rear seat back brace trim

8. Trunk lid trim

**Rear pillar trim and rear shelf trim removal steps**

- Rear seat cushion (Refer to P.52-20.)
- 9. Rear seat belt anchor plate
- 10. Trim guide
- 11. Rear pillar trim
- Rear seatback (Refer to P.52-20.)
- 12. Speaker garnish
- 13. Rear shelf trim

**NOTE**

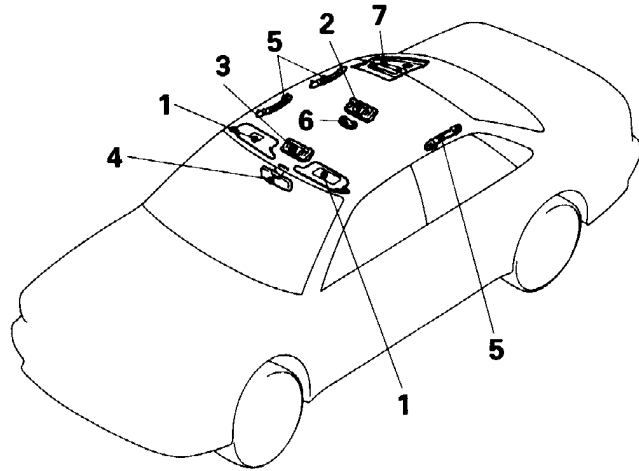
←: Location of clip

## HEADLINING

## REMOVAL AND INSTALLATION

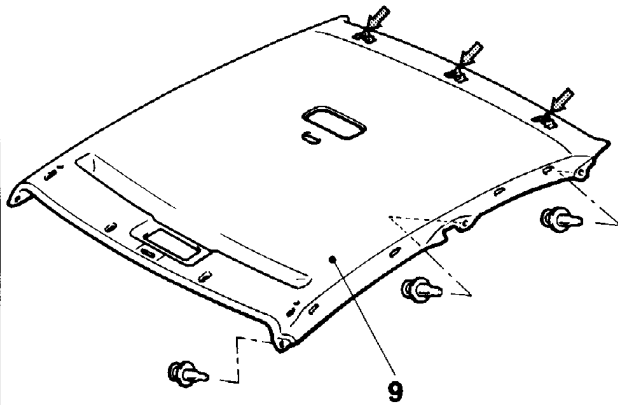
**Pre-removal and Post-installation Operation**

- Removal and Installation of Front Pillar Trim and Center Pillar Upper Trim (Refer to P.52-6.)
- Removal and Installation of Front Seat (Driver's side) (Refer to P.52-10.)



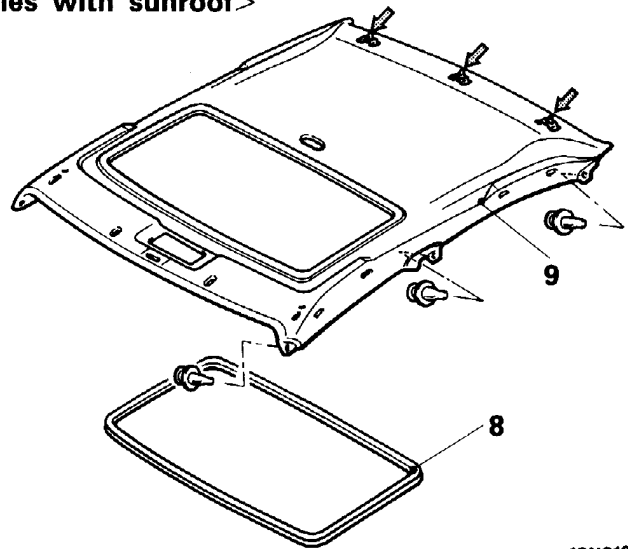
19N0113

## &lt;Vehicles without sunroof&gt;



19N0106

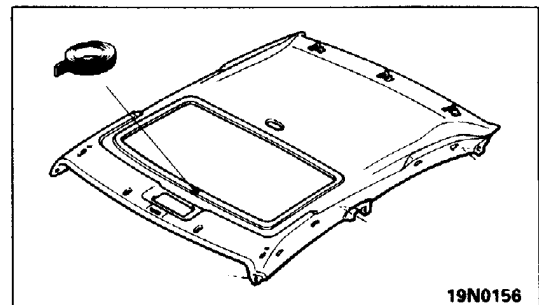
## &lt;Vehicles with sunroof&gt;



19N0107

## NOTE

: Location of clip



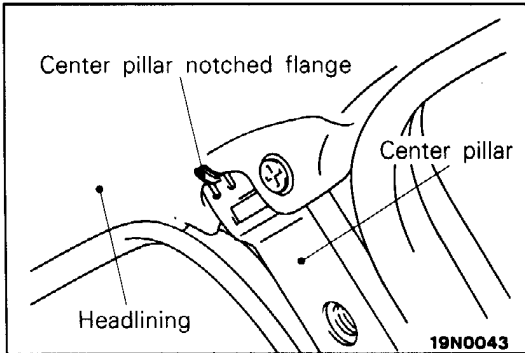
19N0156

**Removal steps**

1. Sunvisors and sunvisor bracket
2. Room lamp <Vehicles without sunroof>
3. Map lamp <Vehicles without sunroof> or sunroof switch and room lamp assembly <Vehicles with sunroof>
4. Center sunvisors
5. Assist grip
6. Room temperature sensor
7. Rear pillar trim
8. Headlining trim <Vehicles with sunroof>
9. Headlining



**Adhesive: Both-side tape [15 mm (0.6 in.) wide and 0.15 mm (0.006 in.) thick, dry adhesive**

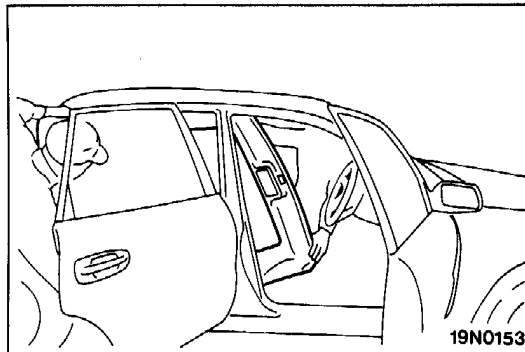


**SERVICE POINT OF REMOVAL**

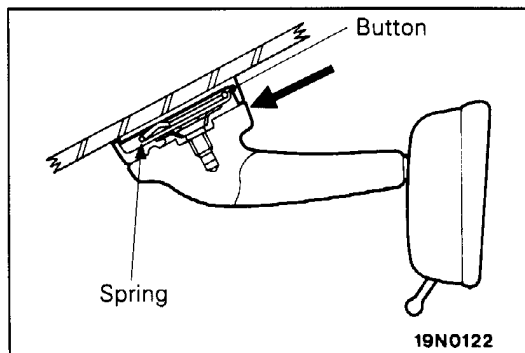
E52IBC/M

**9. REMOVAL OF HEADLINING**

(1) Remove the headlining from the center pillar notched flange.



(2) While bending the headlining slightly, pull it through the rear door opening to the outside of the vehicle.



**INSIDE REAR VIEW MIRROR**

E52NA--

**REMOVAL AND INSTALLATION**

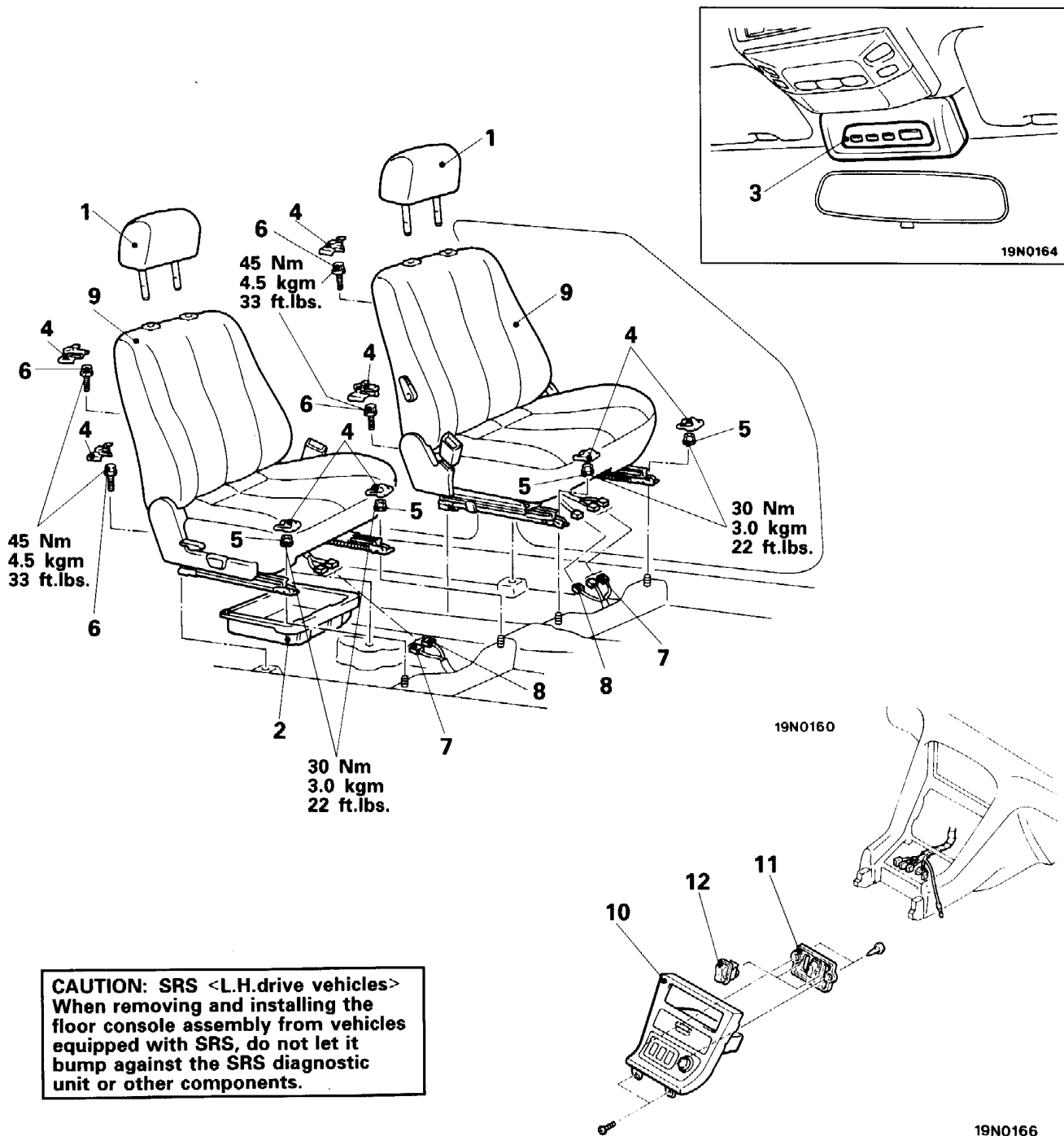
Remove by pushing in the direction of the arrow in the illustration.

**NOTE**

- (1) The mirror spring fits firmly in the groove of the button that is attached to the glass.
- (2) The mirror breaking load is within 450 N (45 kg, 99 lbs.).

## FRONT SEAT

## REMOVAL AND INSTALLATION



**CAUTION: SRS <L.H.drive vehicles>**  
 When removing and installing the floor console assembly from vehicles equipped with SRS, do not let it bump against the SRS diagnostic unit or other components.

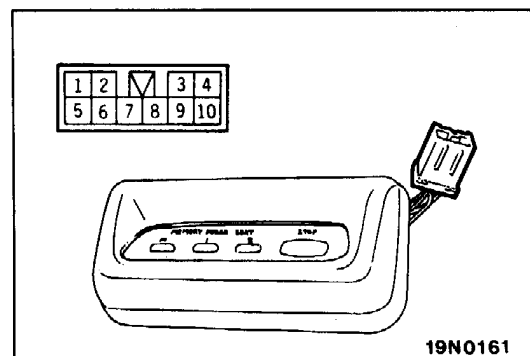
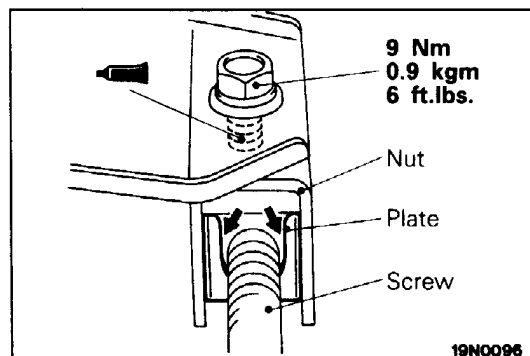
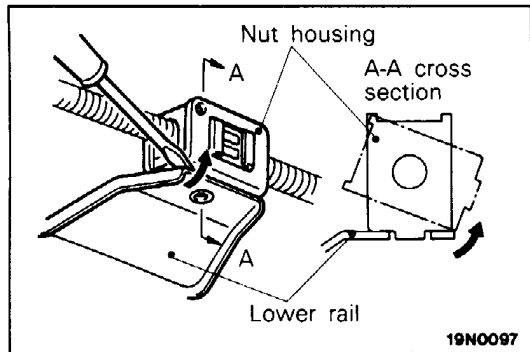
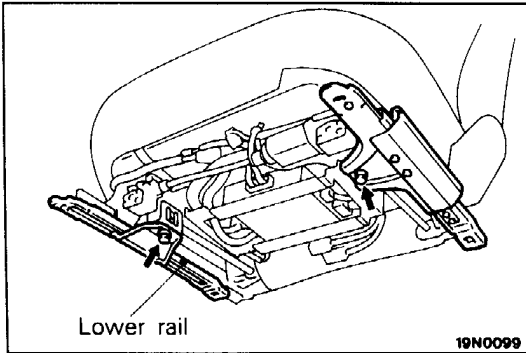
1. Headrest
2. Seat under-tray <Vehicles built up to April, 1994>
3. Memory power seat switch

**Removal steps for front seat assembly**

- ◆◆ 4. Seat anchor cover
- ◆◆ 5. Seat mounting nuts
- ◆◆ 6. Seat mounting bolts
- ◆◆ 7. Power seat connector
- ◆◆ 8. Heated seat connector
- ◆◆ 9. Front seat assembly

**Removal steps for heated seat switch**

- Floor console (Refer to P.52-6.)
- 10. Audio panel
- 11. Console switch panel
- 12. Heated seat switch



**REMOVAL AND INSTALLATION POINTS OF FRONT SEAT ASSEMBLY WHEN THERE IS A MALFUNCTION IN THE POWER SEAT SLIDE MECHANISM**

E52KBAM

If removal of the seat mounting nut and bolt is impossible when there is a malfunction in the slide motor or the slide switch and the seat cannot slide, remove and install the front seat assembly by the following procedure.

- (1) Remove the bolts below the seat cushion as shown in the diagram.
- (2) Insert a (-) driver in between the lower rail and the nut housing, and detach the nut housing from the lower rail hole and turn it.
- (3) Slide the seat, and remove the seat mounting nuts and bolts.

- (4) When reusing the power height adjuster assembly, apply specified adhesive to the mounting bolt, and tighten to the specified torque.

**Specified adhesive: 3M Stud Locking Part No. 4170 or equivalent**

**Caution**

- (1) Match to the left and right nut housing positions.
- (2) Install so that the screw and nut housing plate do not cause interference.

**INSPECTION**

E52KCBA

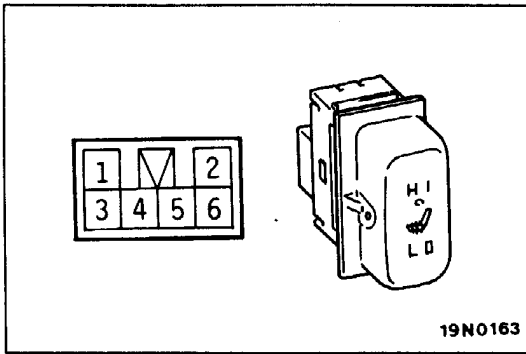
**MEMORY POWER SEAT SWITCH**

Operate the memory power seat switch to check for continuity.

Terminal No.		Switch position						
		3	6	7	8	9	4	10
Memory key	ON	○	—	○			ILL	
Position key 1	ON	○				○		
Position key 2	ON	○			○			
Stop key	ON	○	○					
All switches	OFF							

**NOTE**

○—○ indicates there is continuity between the terminals.



**HEATED SEAT SWITCH**

E52KCAC

Operate the switch to check continuity between terminals.

Terminal No.	1	2	3	6	4	5
Switch position						
HI	○	○	⊕	○		
LO	○		⊕	○		
OFF		○	⊕	○		

**NOTE**

○—○ indicates there is continuity between the terminals.

**SEATBACK HEATER**

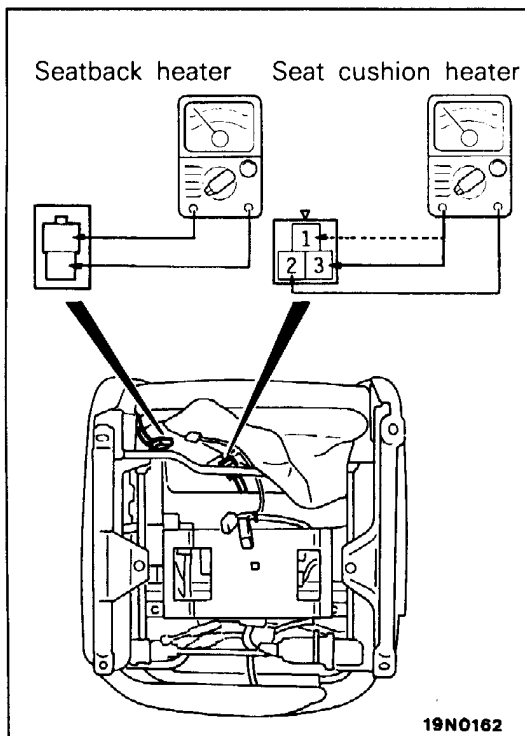
Measure the resistance between terminals.

**Standard value [When ambient temperature is 20°C (168°F)]: Between terminals approx. 5.8 Ω**

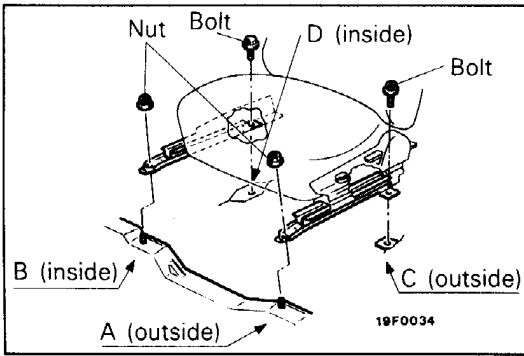
**SEAT CUSHION HEATER**

Measure the resistance between terminals.

**Standard value [When ambient temperature is 20°C (168°F)]:**  
**Between terminals 1 and 3 approx 7.1 Ω**  
**Between terminals 2 and 3 approx 7.4 Ω**  
**Between terminals 1 and 2 approx 0.4 Ω**





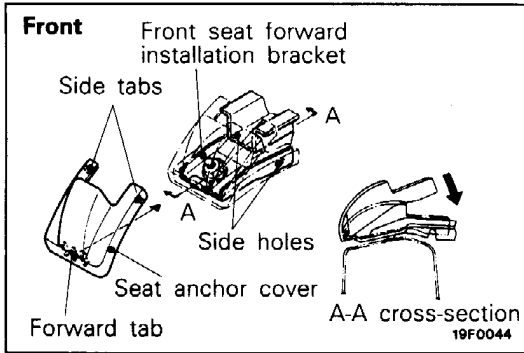


**SERVICE POINTS OF INSTALLATION**

E52KDAK

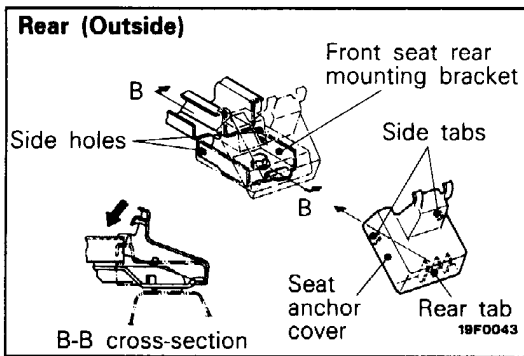
**9. INSTALLATION OF FRONT SEAT ASSEMBLY**

- (1) Install the lower rail so it matches the left and right front seat mounting hole positions, and lock both sides of the seat adjuster. (Not including power seat.)
- (2) Provisionally tighten the seat mounting nuts and seat mounting bolts in the order A, B, C and D, and then tighten them to the specified torque.

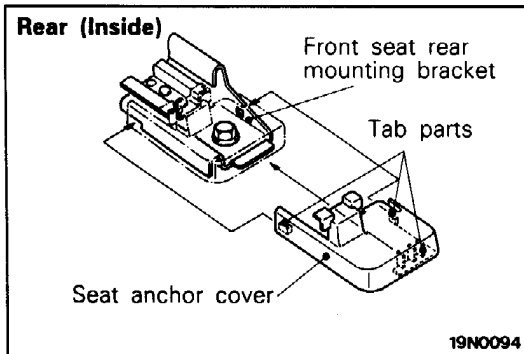


**4. INSTALLATION OF SEAT ANCHOR COVERS**

- (1) After securely inserting the front seat anchor cover forward tab into the front seat forward mounting bracket, turn it in the direction of the arrow as shown in the figure to install the side tab into the bracket hole.



- (2) After securely inserting the rear seat anchor cover (outside) rear tab into the front seat rear mounting bracket, turn it in the direction of the arrow as shown in the figure to install the side tab into the bracket hole.



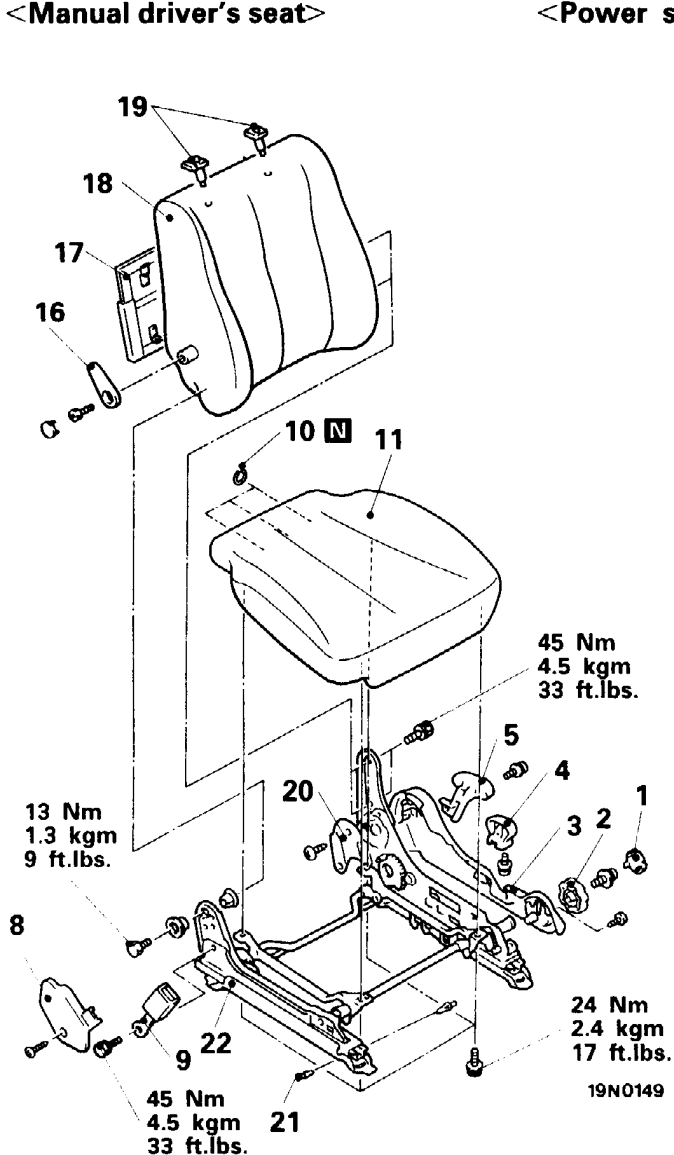
- (3) Insert the rear side seat anchor cover (inner side) from the rear to the front seat rearward installation bracket, and then attach each tab of the seat anchor cover to the bracket.

## DISASSEMBLY AND REASSEMBLY

E52KE-

## &lt;Manual driver's seat&gt;

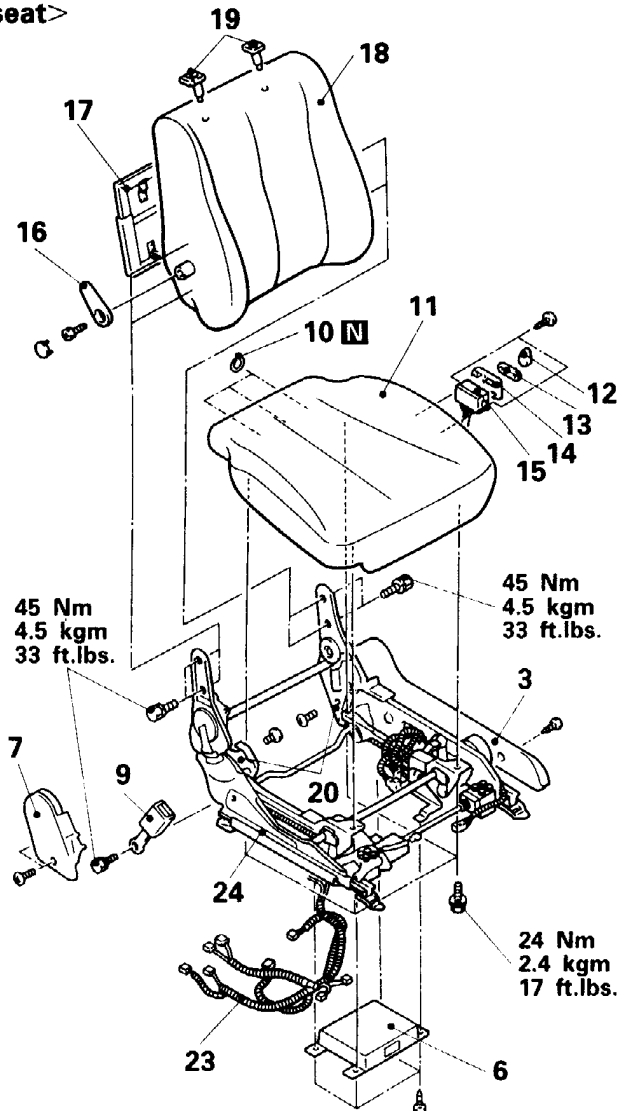
## &lt;Power seat&gt;

**Disassembly steps for manual driver's seat**

1. Height adjuster lever cap
2. Height adjuster lever
3. Front seat side shield cover
4. Seat adjuster lever
5. Reclining lever
8. Front seat hinge cover
9. Inner seat belt
10. Hog ring
11. Seat cushion assembly
16. Lumber support lever
17. Front-back panel assembly
18. Seatback assembly
19. Head restraint guide
20. Reclining adjuster inner cover
21. Pull wire
22. Height adjuster assembly

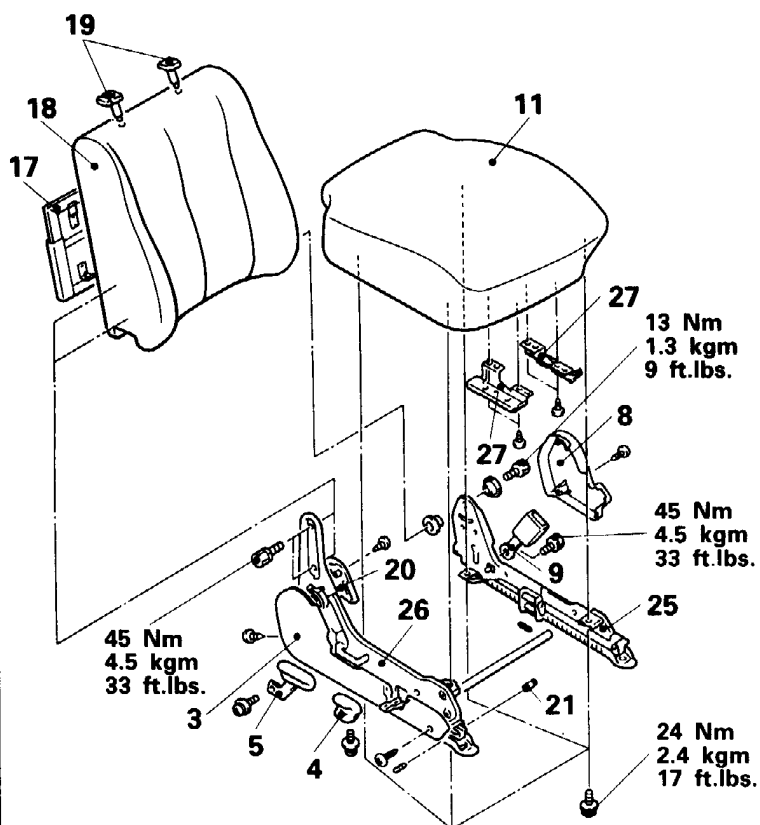
## NOTE

The power seat figure shows the driver's seat. The front passenger seat is symmetrical, except that it has no memory power seat control unit.

**Disassembly steps for power seat**

3. Front seat side shield cover
6. Memory power seat control unit (driver's seat only)
7. Reclining adjuster cover
9. Inner seat belt
10. Hog ring
11. Seat cushion assembly
12. Power seat reclining lever
13. Power seat adjuster lever
14. Garnish
15. Power seat switch
16. Lumber support lever
17. Front-back panel assembly
18. Seatback assembly
19. Head restraint guide
20. Reclining adjuster inner cover
23. Power seat wiring harness
24. Power height adjuster assembly

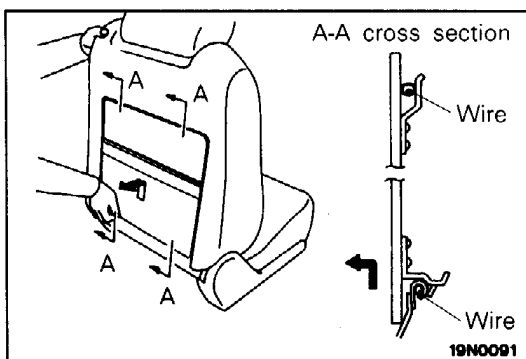
<Manual front passenger seat>



**Disassembly steps for manual front passenger seat**

- 3. Front seat side shield cover
- 4. Seat adjuster lever
- 5. Reclining lever
- 8. Front seat hinge cover
- 9. Inner seat belt
- 11. Seat cushion assembly
- 17. Front-back panel assembly
- 18. Seatback assembly
- 19. Head restraint guide
- 20. Reclining adjuster inner cover
- 21. Pull wire
- 25. Seat inner adjuster
- 26. Seat outer adjuster
- 27. Under tray rail

19N0148

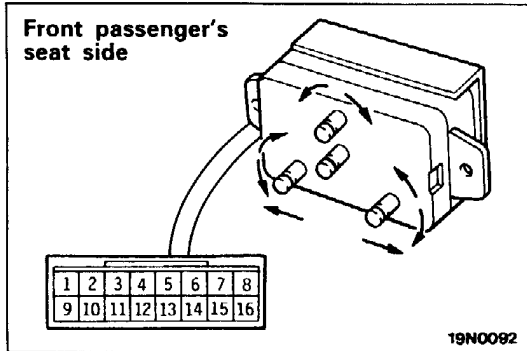
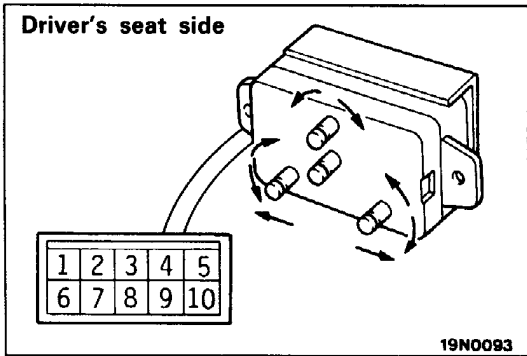


**SERVICE POINT OF DISASSEMBLY**

E52KFDA

**17. REMOVAL OF FRONT-BACK PANEL ASSEMBLY**

Lift the front-back panel assembly upwards, and pull the lower portion towards you to remove.



**INSPECTION**

**POWER SEAT SWITCH**

Operate the power seat switch and check for continuity.

**Driver's seat side**

Terminal No.		1	2	3	5	6	7	8	9	10
		Switch position								
Reclining switch	Forward								○—○	
	Backward				○—○					○—○
Slide switch	Forward	○—○								○—○
	Backward					○—○				○—○
Front height switch	Up		○—○							○—○
	Down						○—○			○—○
Rear height switch	Up			○—○						○—○
	Down							○—○		○—○
All switches	OFF									

**Front passenger's seat side**

Terminal No.		1	2	3	4	5	6	7	8	9	10	11	12	13	14	15	16
		Switch position															
Reclining switch	Forward								○—○					○—○	○—○		○—○
	Backward								○—○					○—○	○—○		○—○
Slide switch	Forward	○—○			○—○												○—○
	Backward		○—○	○—○	○—○												○—○
Front height switch	Up									○—○			○—○				○—○
	Down										○—○	○—○	○—○				○—○
Rear height switch	Up					○—○	○—○										○—○
	Down					○—○		○—○								○—○	○—○
All switches	OFF																

**NOTE**

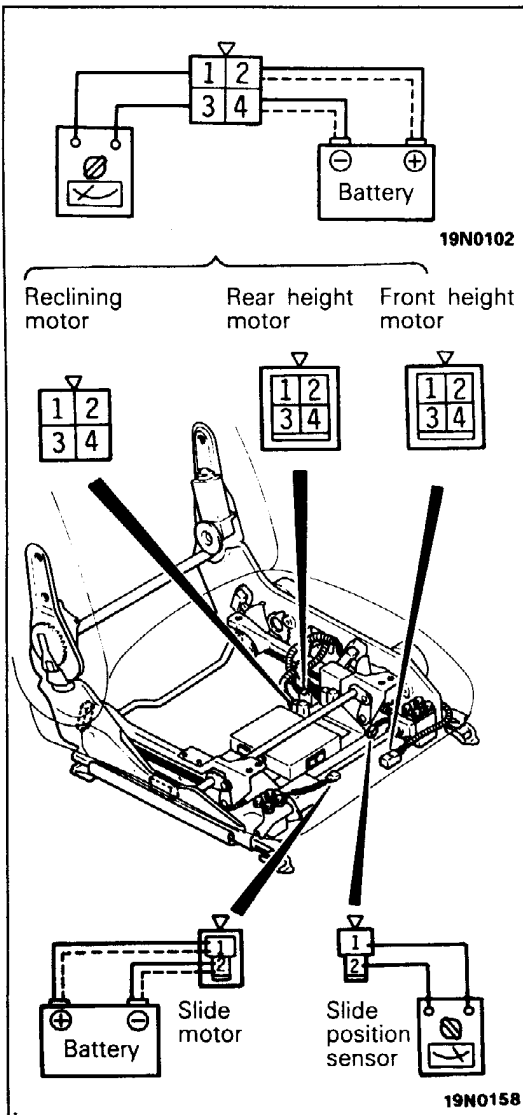
○—○ indicates that there is continuity between the terminals.

**EACH MOTOR AND POSITION SENSOR FOR THE DRIVER'S POWER SEAT**

E52KGDA

A position sensor is built into each of the front height, rear height and reclining motors, and the slide motor has a separate slide position sensor. Inspect the operation of each motor and position sensor according to the following procedures.

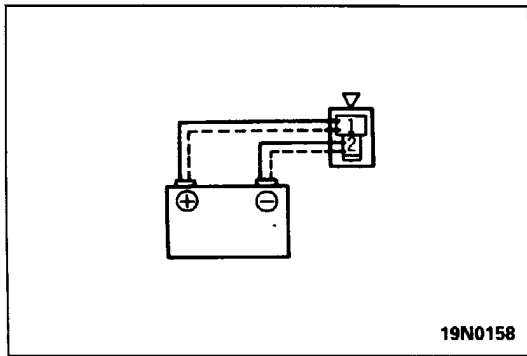
- (1) Disconnect the connectors for each motor and position sensor.
- (2) When the battery is connected directly to the motor terminals, check if the motors run smoothly, and check if each setting mechanism runs in the directions shown in the table below until the limit switch turns OFF, for each motor.
- (3) Connect a circuit tester to the position sensor terminals as shown in the figure, and check if the resistance in the position sensor changes when each motor is stopped and when each motor is running.
- (4) If there is an abnormality, replace the power height adjuster assembly.



Terminal No.		Direction of Operation			
		2	4	1	3
Front height, rear height	Up	⊕	⊖		
	Down	⊖	⊕		
Reclining	Forward	⊕	⊖		
	Backward	⊖	⊕		

Connector and Terminal No.		Motor		Position sensor	
		1	2	1	2
Slide	Backward	⊕	⊖		
	Forward	⊖	⊕		

19N0100



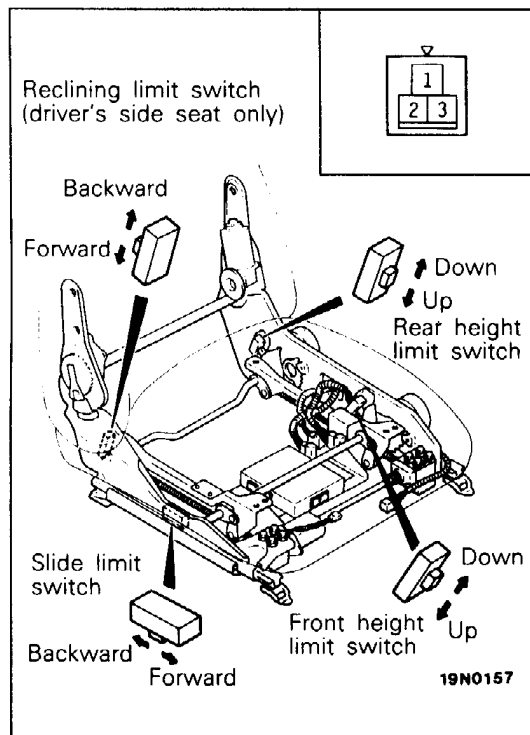
**EACH MOTOR FOR THE PASSENGER SIDE POWER SEAT**

E52KGDB

Inspect the operation of each motor according to the following procedures.

- (1) Disconnect the connectors for each motor.
- (2) When the battery is connected directly to the motor terminals, check if the motors run smoothly, and check if each setting mechanism runs in the directions shown in the table below for each motor.
- (3) If there is an abnormality, replace the power height adjuster assembly.

Name of Motor	Direction of Operation	Terminal No.		Stop Position
		1	2	
Front height, Rear height	Down	⊕	⊖	Stops when limit switch is OFF
	Up	⊖	⊕	
Slide	Backward	⊕	⊖	
	Forward	⊖	⊕	
Reclining	Backward	⊕	⊖	Stops at operating range limit
	Forward	⊖	⊕	



**POWER SEAT LIMIT SWITCHES**

E52KGEA

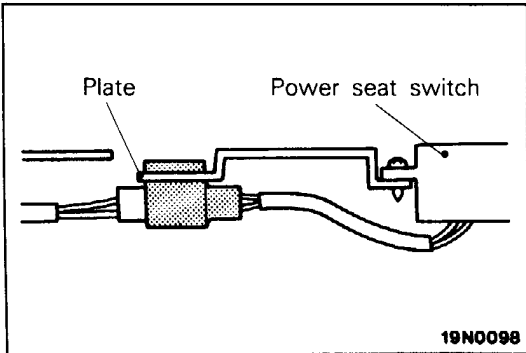
- (1) Disconnect each limit switch connection and connect a circuit tester to the terminals.
- (2) Operate each switch and check for continuity between the terminals.
- (3) If there is an abnormality, replace the power height adjuster assembly.

Switch	Terminal No. Switch position	1	2	3
		Slide limit switch	Forward	○—○
	Backward	○—		○
Reclining limit switch	Forward	○		○
	Backward	○—○		
Front height, rear height limit switches	Up	○		○
	Down	○—○		
All limit switches	Middle (ON)	○—○—○		

NOTE

○—○ indicates there is continuity between the terminals.

PWGE9004

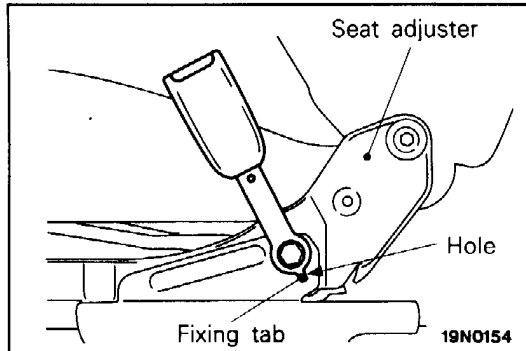


**SERVICE POINT OF REASSEMBLY**

E52KHAD

**15. INSTALLATION OF POWER SEAT SWITCH**

After connecting the harness connector, hang the harness connector on the seat cushion assembly plate.

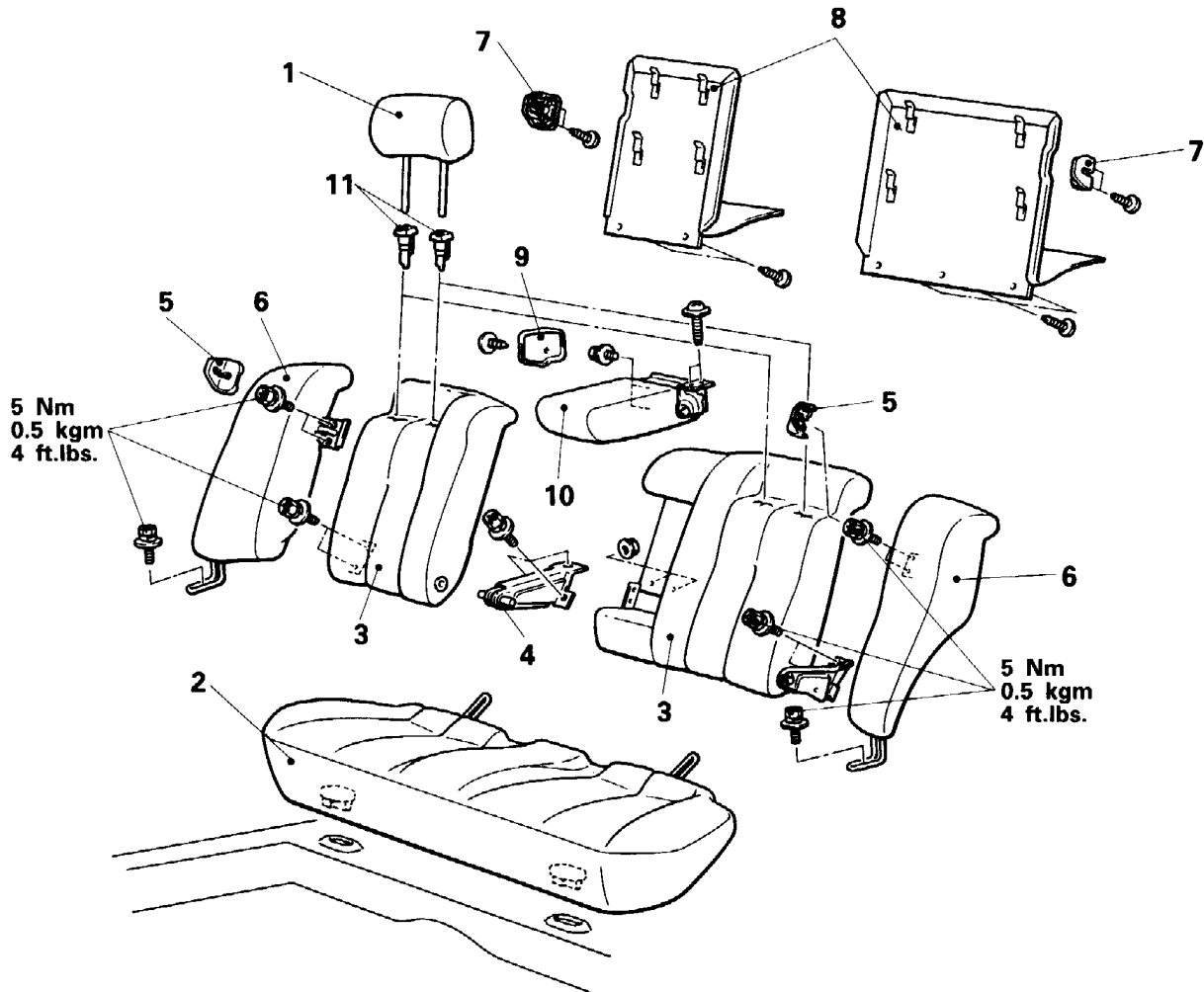


**9. INSTALLATION OF INNER SEAT BELT**

Insert the inner seat belt fixing tab securely into the seat adjuster hole.

## REAR SEAT

## REMOVAL AND INSTALLATION



19N0152

1. Head restraint



2. Seat cushion

**Removal steps for rear seat back assembly**

3. Rear seatback assembly

4. Center hinge bracket

**Removal steps for side seat back assembly**

2. Seat cushion



5. Rear seat striker cover



6. Side seatback assembly

**Removal steps for arm rest**

3. Rear seatback (LH)

7. Cover

8. Back board assembly (LH)

9. Arm rest hinge cover

10. Arm rest

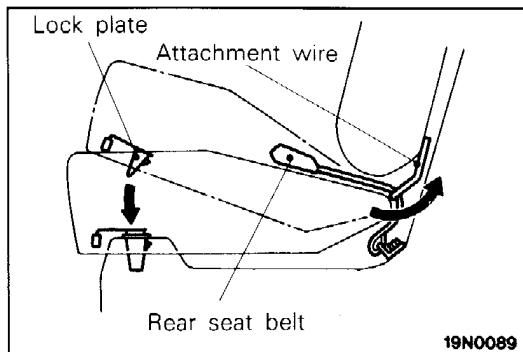
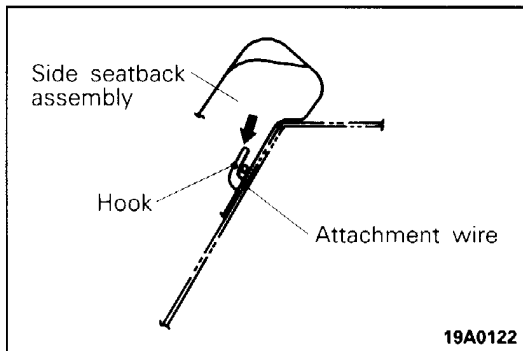
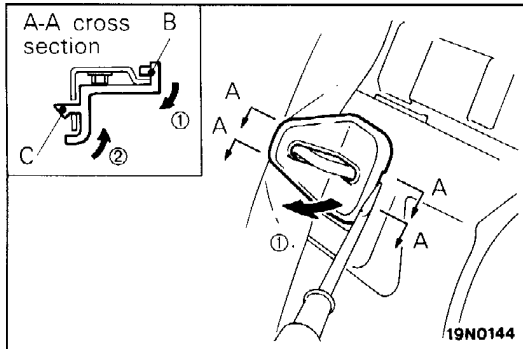
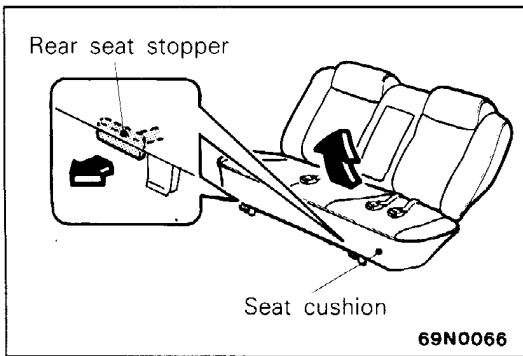
**Removal steps for head restraint guide**

7. Cover

8. Back board assembly

11. Head restraint guide





## SERVICE POINTS OF REMOVAL

E52KBAN

### 2. REMOVAL OF SEAT CUSHION

While keeping the rear seat stopper pulled, lift up the cushion to remove it.

### 5. REMOVAL OF REAR SEAT STRIKER COVER/6. SIDE SEATBACK ASSEMBLY

- (1) After pushing in the direction of arrow ① as shown in the figure to remove the tab B lock, press in the direction of arrow ② to remove tab C, and remove the rear seat striker cover.
- (2) Remove the side seatback assembly mounting bolts.
- (3) Lift up the side seatback assembly to remove it.

## SERVICE POINTS OF INSTALLATION

E52KDAL

### 6. INSTALLATION OF SIDE SEATBACK ASSEMBLY

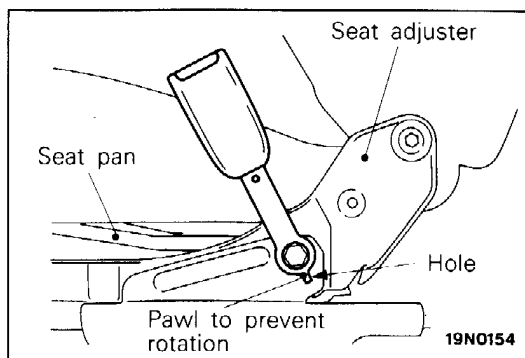
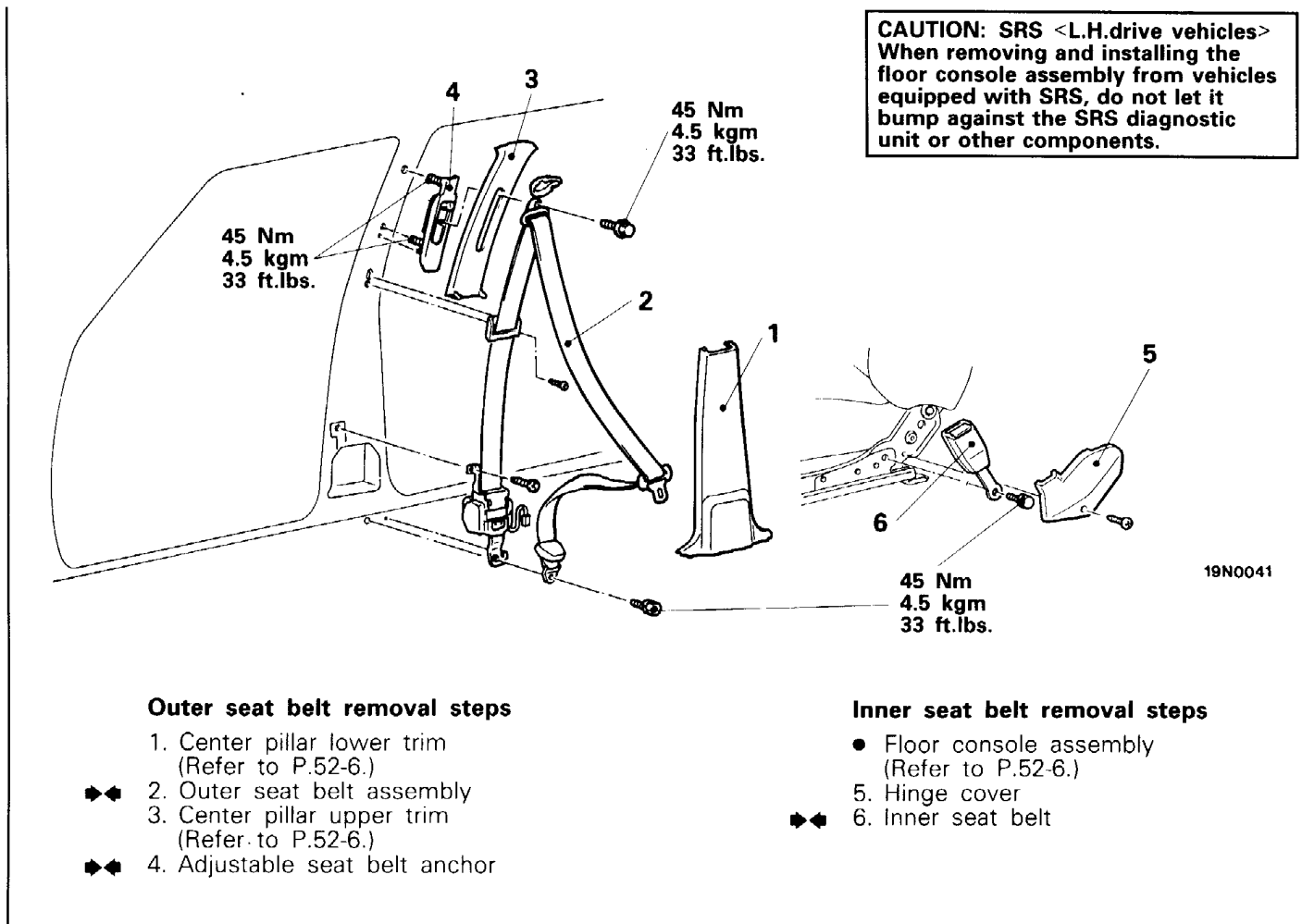
Push the side seatback assembly in the direction indicated in the illustration; then securely attach the attachment wire to the body side hook and install the side seatback assembly.

### 2. INSTALLATION OF SEAT CUSHION

- (1) Pull the rear seat belt on top of the seat cushion.
- (2) Insert the seat cushion attachment wire securely below the seatback.
- (3) Insert the seat cushion lock plate securely into the floor holes.

# FRONT SEAT BELT REMOVAL AND INSTALLATION

E52MA-A

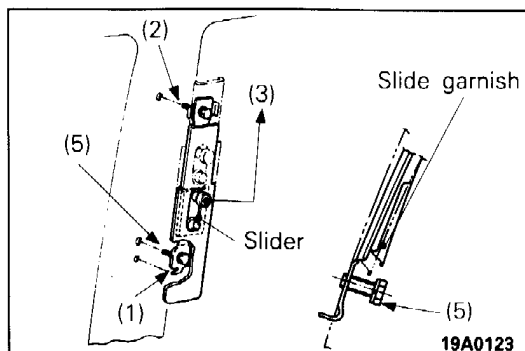


## SERVICE POINTS OF INSTALLATION

E52MDA0

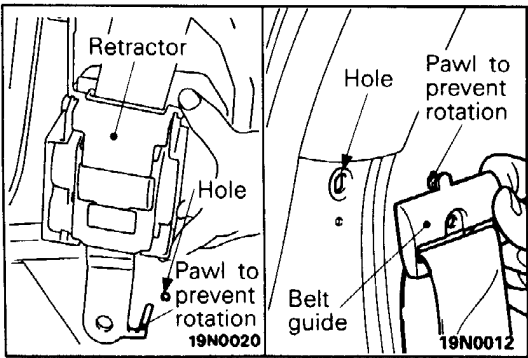
### 6. INSTALLATION OF INNER SEAT BELT

Positively insert the pawl to prevent the inner seat belt from rotating in the hole provided on the seat adjuster.



### 4. INSTALLATION OF ADJUSTABLE SEAT BELT ANCHOR

- (1) Securely fit the tab of the adjustable seat belt anchor into the hole in the center pillar.
- (2) Provisionally tighten the installation bolt at the upper side.
- (3) Lock the slider at the uppermost position.
- (4) Raise the slide garnish to the upper side.
- (5) Tighten the lower mounting bolt to the specified torque.
- (6) Lower the slide garnish and the slider, and fully tighten the upper mounting bolt to the specified torque.

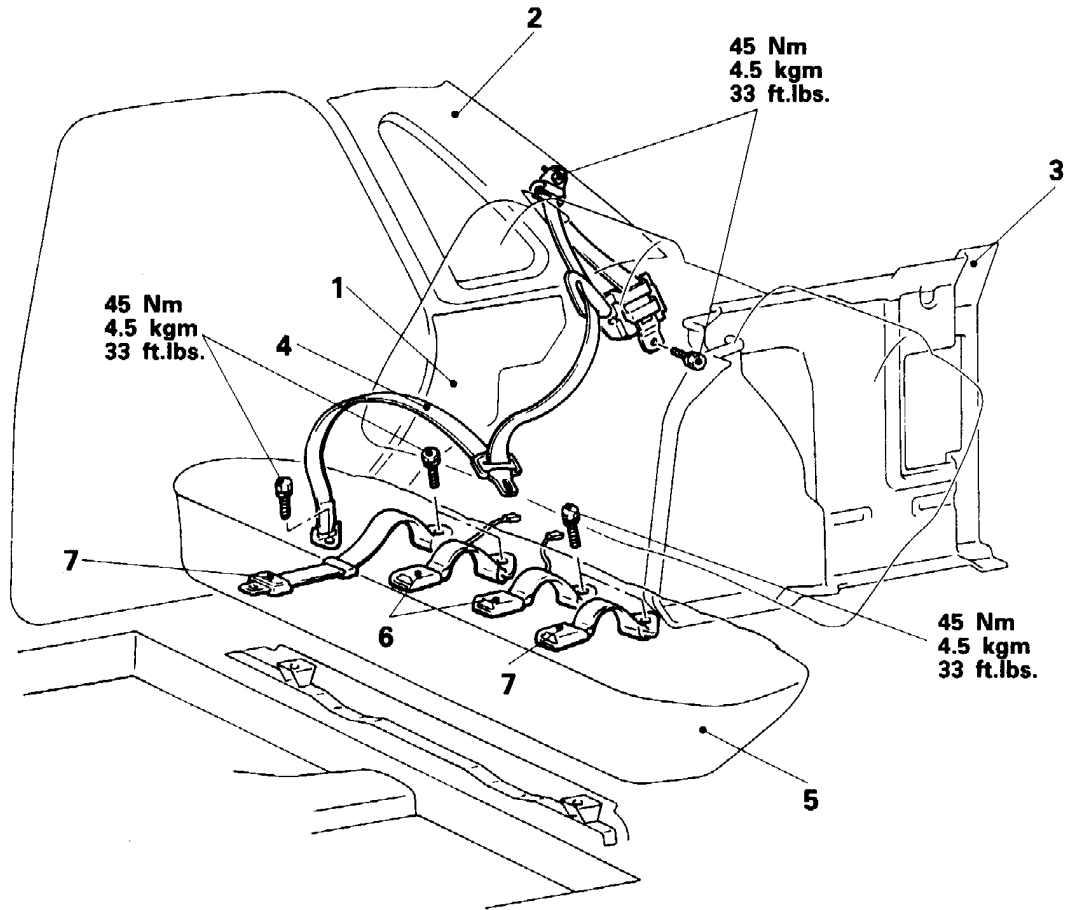


**2. INSTALLATION OF OUTER SEAT BELT ASSEMBLY**

- (1) Positively insert the pawl to prevent the retractor from rotating in the hole provided on the body.
- (2) Positively insert the pawl to prevent the belt guide from rotating in the hole provided on the body.

**REAR SEAT BELT  
REMOVAL AND INSTALLATION**

E52MA-B



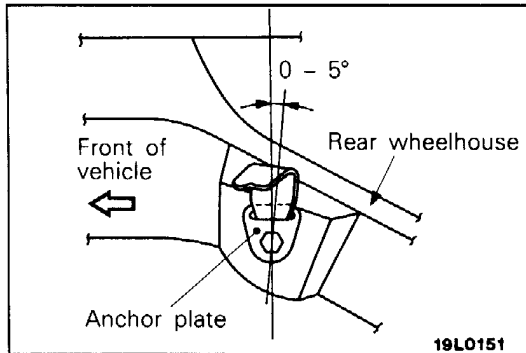
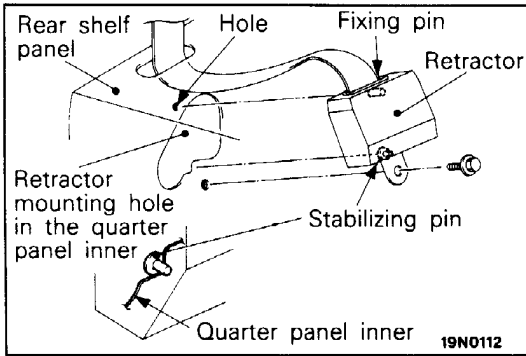
19N0111

**Outer seat belt removal steps**

1. Rear wheelhouse trim
2. Rear pillar trim (Refer to P.52-6.)
3. Trunk side trim
- ◆◆ 4. Outer seat belt assembly

**Inner seat belt and center seat belt removal steps**

5. Rear seat cushion
6. Inner seat belt assembly
7. Center seat belt assembly

**SERVICE POINTS OF INSTALLATION**

E52MDBP

**4. INSTALLATION OF OUTER SEAT BELT ASSEMBLY**

- (1) Pull the anchor plate, tongue, sash guide and trim guide from the trunk into the inside of the vehicle through the rear shelf panel hole.
- (2) Insert the retractor fixing pin securely into the quarter panel inner hole.
- (3) Insert the quarter panel inner securely into the channel of the retractor stabilizing pin.
- (4) Install so that the anchor plate is within the range of the angle indicated in the illustration.