

Using *MEDIC*

INTRODUCTION TO *MEDIC*

MEDIC is truly a comprehensive electronic information system that integrates technical service and warranty information, technical training, MUT–II reprogramming functions, and the MUT–III Scan Tool Viewer.

It provides a single reference source for electronic TSBs, service manuals, and warranty and related information.

It also provides these other important features and benefits:

- **Frequent Updates:** The electronic information on your *MEDIC* workstation can be updated more easily than paper–based information.
- **Automatic Downloads:** Electronic TSBs and other service and repair information can be downloaded by MMNA to your *MEDIC* workstation overnight.
- **Automatic Filing:** *MEDIC* automatically 'files' electronic information in the right place every time, enabling you to quickly locate it when you need it.
- **Information Sorting:** Once you enter a VIN, or specify a model, engine and service group, *MEDIC* will sort out most non–applicable information, giving you just the information you need
- **Print Paper Copies:** Using your *MEDIC* workstation's built–in printer, you can print copies of electronic TSBs, wiring diagrams, and other service information.
- **Reprogram Your ROM Packs:** *MEDIC*'s built–in MUT–II manager lets you reprogram your MUT–II ROM pack with the latest vehicle information from MMNA.
- **Electronic Technical Training:** Your *MEDIC* workstation will play future CD–based interactive training programs, plus selected older VHS technical service tapes transferred to CD–ROM. The training CDs will let you learn while practicing in the dealership, or at home on a multimedia system, either PC– or MAC–based.

POWERFUL MULTI–TASKING ENVIRONMENT

All *MEDIC*'s service information with the exception and diagnostic software applications, with the exception of the STV function, operate under under IBM's latest OS/2 WARP operating system, an advanced operating environment highly regarded for its multi–tasking capabilities. The term 'multi–tasking' refers to the capability to 'launch' and operate one of *MEDIC*'s software applications, like warranty superscreen, then switch to TIR to look for a related TSB without having to exit warranty superscreen. To switch between tasks, hold down the <ALT> key then hit the <ESC> key. You will then switch to the MAIN MENU where you can choose another function. To switch back again, hit the same <ALT> <ESC> keys and again you will return to the MAIN MENU. Active programs will show by a blue colored button on the menu. Clicking that button will return you to that task. *NOTE: Using the multi–task feature is not recommended while using the Technical Training CD Video player. Multi–tasking is not available with the MUT–III Scan Tool Viewer (STV) since this function requires rebooting into the Windows 2000 desktop.*



MITSUBISHI
ELECTRONIC DIAGNOSTIC
& INFORMATION CENTER

Using *MEDIC*



MEDIC MAIN MENU

The *MEDIC* MAIN MENU is shown. To proceed to the HELP instructions for each function, click on the button for that section in the illustration or the links shown below:

- [TIR](#)
- [Mitsubishi Dealer Link \(MDL\)](#)
- [STV \(MUT-III Scan Tool Viewer\)](#)
- [MUT-II ROM Pack Re-Write](#)
- [TRIPLE DIAMOND Technical Training](#)
- [Maintenance](#)

NOTE:

The TUTORIAL button opens this tutorial.

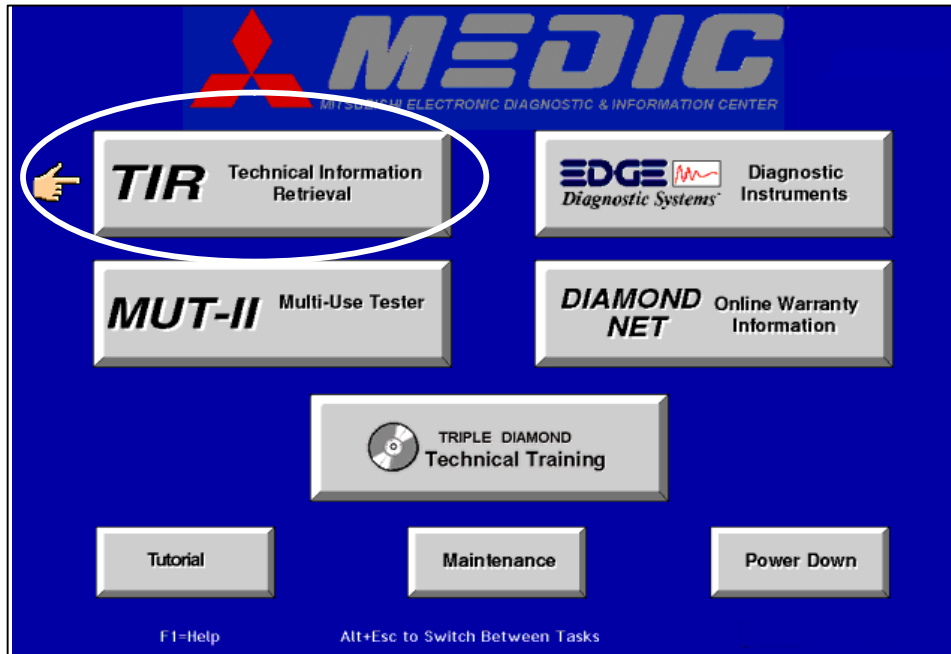
The Power Down button is used only to turn off the system.



MITSUBISHI
ELECTRONIC DIAGNOSTIC
& INFORMATION CENTER

Using **TIR** Technical Information Retrieval

USING TIR



Clicking on the button labeled TIR takes you to the opening screen for *MEDIC*'s Technical Information Retrieval function. It lets you quickly access literally thousands of pages of service information and illustrations specific to the vehicle you select.

All existing service bulletins for 1983 through current Mitsubishi vehicle models are provided. Whenever MMSA issues a new service bulletin, we will electronically download it to your *MEDIC* workstation that night. To ensure your workstation is always completely up to date, MMSA will also supply you with CD-ROM updates as they become available.

All the TIR functions are driven by a sophisticated 'indexing' database. It lets you access the latest bulletins as well as selected service manuals, for information on the currently selected vehicle.

You can search for the specific information you want either :

- By keyword search
- By menu item selection
- By vehicle system
- Or by component

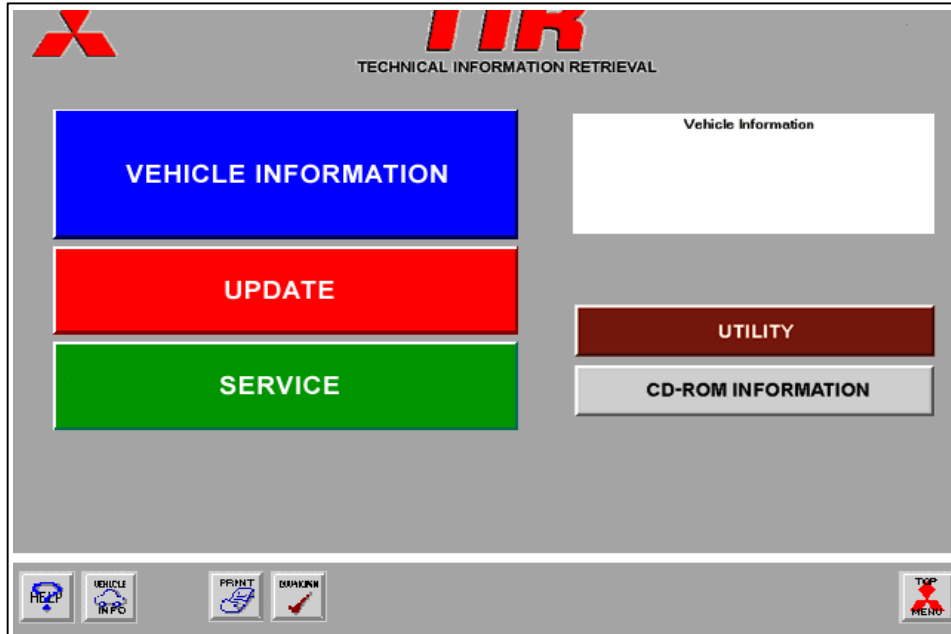
To begin Using TIR tutorial, click on the TIR menu button.





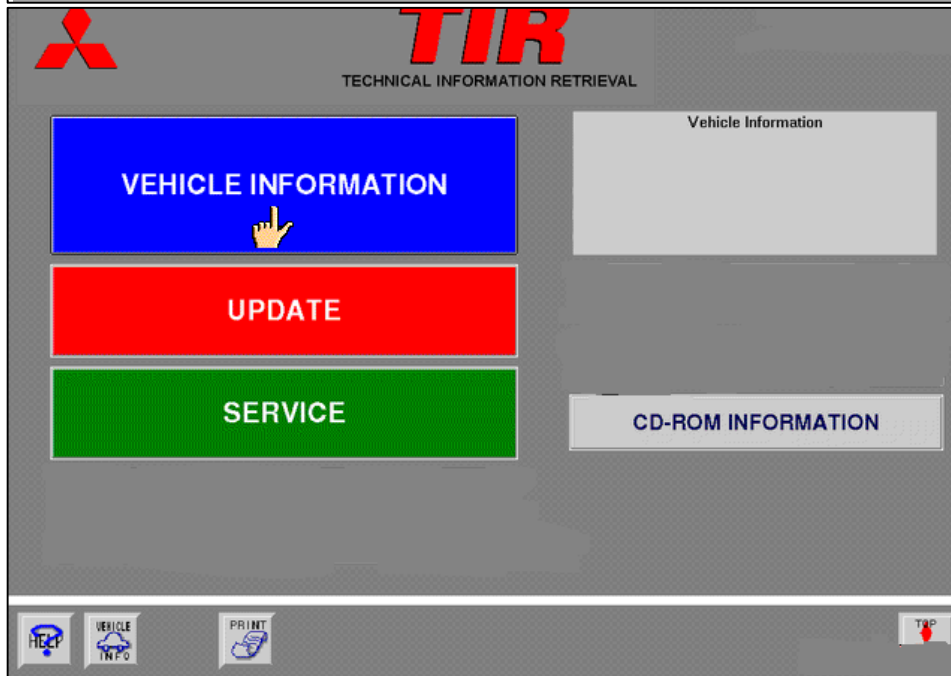
MITSUBISHI
ELECTRONIC DIAGNOSTIC
& INFORMATION CENTER

Using *TIR* Technical Information Retrieval



The TIR Main Menu

Notice the different colors of the three buttons on the left side of the screen. These buttons are color coded to match the background of the screens pertaining to that section. So, when you see a red background for instance, you will know you are in the UPDATE area of TIR.



VEHICLE INFORMATION

Your first step for retrieving any technical information is enter information for the vehicle you are servicing. You do this by clicking the blue VEHICLE INFORMATION button.



MITSUBISHI
ELECTRONIC DIAGNOSTIC
& INFORMATION CENTER

Using **TIR** Technical Information Retrieval

VEHICLE INFORMATION

VIN

YEAR

MODEL

ENGINE

TRANSMISSION

OTHER

PAST VEHICLE SELECT CLEAR CANCEL OK

HELP PRINT TOP

Clicking the blue VEHICLE INFORMATION button opens the blue VEHICLE INFORMATION screen. On this screen you have your choice of three different ways to search for technical information for the vehicle you are repairing. *NOTE: Before you begin, click the clear button to clear any vehicle information previously stored in the system.*

- PAST VEHICLE SELECT
If you have previously worked on this same vehicle, click this button. A list of vehicles will appear. Highlight that vehicle and click OK.
- VIN
You can enter the VIN of the vehicle you are working on and click OK. Use the complete 17-digit VIN.
- YEAR & MODEL
You can click first the YEAR button and choose the model YEAR, then click OK. That year will then appear in the box. Then click MODEL and choose the vehicle model then click OK. The model will then appear.

You will see that TIR will fill in other boxes on the screen depending the type of selection and the vehicle configuration. This enables TIR to do a narrower search for information.

When you have chosen the vehicle, click OK again to return to the TIR Main Menu. You'll notice that the gray Vehicle Information box now has the information for the vehicle you chose.

TIR
TECHNICAL INFORMATION RETRIEVAL

VEHICLE INFORMATION

UPDATE

SERVICE

CD-ROM INFORMATION

Vehicle Information

1995 3000GT
6G72(3.0,D4,MPI,I/C,T/C)
W6MG1(6M/T-AWD)
OTHERS



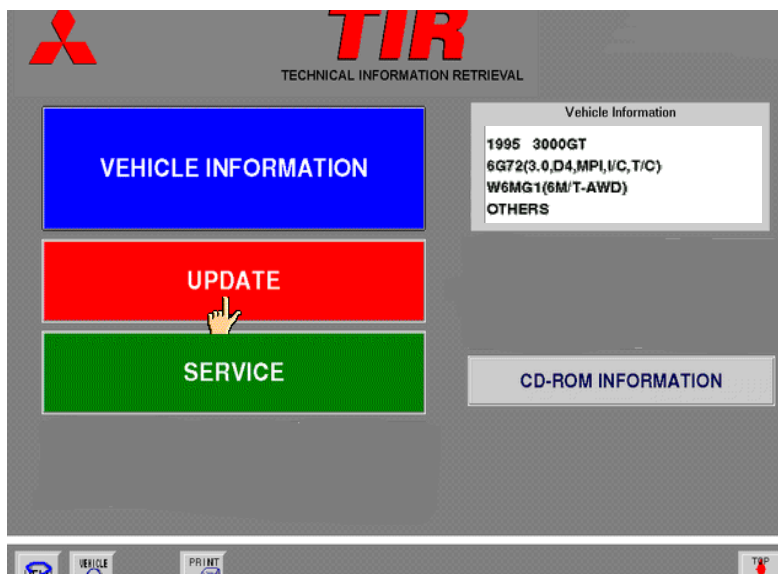
MITSUBISHI
ELECTRONIC DIAGNOSTIC
& INFORMATION CENTER

Using **TIR** Technical Information Retrieval



Clicking on the VEHICLE INFORMATION button at the bottom of the screen at any time the button is present will enlarge the vehicle information screen. To return to the previous screen, click OK.

You are now ready to select either UPDATE or SERVICE for this vehicle.



UPDATE

To begin searching for Updates (Technical Service Bulletins, Safety Recall Bulletins, Emissions Recall Bulletins, Service Campaigns, and Tech Talk articles), from the TIR MAIN MENU click on the UPDATE button.



MITSUBISHI
ELECTRONIC DIAGNOSTIC
& INFORMATION CENTER

Using **TIR** Technical Information Retrieval

UPDATE SEARCH

VIN	JA3XD64BXNY1111	UPDATE#	
YEAR	1992	DATE	
MODEL	3000GT	SYMPTOM	
GROUP			
ENGINE	6		
TRANSMISSION	F		
UPDATE TYPE			

UPDATE SEARCH with the vehicle information only.
Click the OK button

CLEAR **CANCEL** **OK**

You can search for every UPDATE for the chosen vehicle by simply clicking the OK button on the UPDATE SEARCH screen. This is the broadest search available.

NOTE: At any time when the buttons are visible, you can CLEAR the screen by clicking on the CLEAR button. All information will be removed from the screen. The CANCEL button will cancel the current operation and return you to the previous screen. The TOP MENU button will always return you to the TIR MAIN MENU.

UPDATE LIST

UPDATE #	SUBJECT	Hits(63)
TSB-95-52B-002	SRS DIAGNOSTIC TROUBLE CODE (DTC) ERASUR	300
TSB-95-34-001	REAR SHOCK ABSORBER TIGHTENING TORQUE -	300
TSB-95-11-001	VALVE NOISE AT START-UP	300
TSB-94-11-003	ENGINE BOLT AND NUT INSTALLATION - SERVI	300
TSB-94-42B-002	DOOR WINDOW INNER WEATHERSTRIP DAMAGE	300
TSB-94-55-001	A/C SYSTEM LEAK CHECKING	300
TSB-94-52B-001	SUPPLEMENTAL RESTRAIN SYSTEM - COMPONENT	300
TSB-94-23-002	A/T SHIFT DELAY BEFORE WARM-UP	300
TSB-94-15-001	INSTRUCTIONS FOR REPLACING EGR PIPE (USE	300
TSB-94-52A-001	CARGO COVER RATTLE OR LOOSENESS	300
TSB-94-11-001	ENGINE BLOCK HEATER USAGE	300
TSB-93-35-003	ABS CIRCUIT DIAGRAMS - SERVICE MANUAL RE	300

CANCEL **OK**

Scrolling Arrows

After clicking the OK button you will see a screen which lists ALL updates for the particular vehicle. In the upper right corner of the screen the number of 'hits' will be indicated. This is the total number of updates on the list.

To scroll through the list, click on the large blue up and down arrows on the right side of the screen. Single arrows scroll a line at a time, the double arrows scroll a page at a time.

To narrow your search to a more manageable list of updates, proceed with the next step.

NOTE: To print the update list, click on the PRINT button, then click on PRINT LIST, then click OK. The entire list of updates, not just the displayed updates, will print.



MITSUBISHI
ELECTRONIC DIAGNOSTIC
& INFORMATION CENTER

Using *TIR* Technical Information Retrieval

UPDATE SEARCH

VIN	JAS
YEAR	199
MODEL	300
GROUP	
ENGINE	6G7
TRANSMISSION	F4A
UPDATE TYPE	

Narrow search by using search categories:

- GROUP
- UPDATE#
- SYMPTOM
- KEYWORD
- UPDATE TYPE

CLEAR **CANCEL** **OK**

HELP VEHICLE INFO PRINT DOWNLOAD TOP MENU

You can now narrow your search using the features of the TIR UPDATE menu screen.

UPDATE SEARCH

VIN	JAS
YEAR	199
MODEL	300
GROUP	
ENGINE	6G7
TRANSMISSION	F4A
UPDATE TYPE	

Narrow search by using search categories:

- GROUP
- UPDATE#
- SYMPTOM
- KEYWORD
- UPDATE TYPE

CLICK →

CLEAR **CANCEL** **OK**

HELP VEHICLE INFO PRINT DOWNLOAD TOP MENU

UPDATE SEARCH

GROUP Choices

- 00 - GENERAL
- 11 - ENGINE
- 12 - ENGINE LUBRICATION(FR
- 13 - FUEL
- 14 - ENGINE COOLING
- 15 - INTAKE & EXHAUST
- 16 - ENGINE ELECTRICAL
- 17 - ENGINE & EMISSION CONT
- 21 - CLUTCH
- 22 - MANUAL TRANSAXLE
- 23 - AUTOMATIC TRANSAXLE
- 25 - PROPELLER SHAFT

EXAMPLE:

Complaint involves late shifting automatic transaxle.

Click

23 AUTOMATIC TRANSAXLE

Then click the green OK button

CLEAR **CANCEL** **OK**

HELP VEHICLE INFO PRINT DOWNLOAD TOP MENU

When the next screen appears, Group 23 will be indicated. Click OK again.



Using *TIR* Technical Information Retrieval

UPDATE SEARCH

GROUP Choices

- 00 - GENERAL
- 11 - ENGINE
- 12 - ENGINE LUBRICATION(FROM 1997)
- 13 - FUEL
- 14 - ENGINE COOLING
- 15 - INTAKE & EXHAUST
- 16 - ENGINE ELECTRICAL
- 17 - ENGINE & EMISSION CONTROL
- 21 - CLUTCH
- 22 - MANUAL TRANSAXLE
- 23 - AUTOMATIC TRANSAXLE
- 25 - PROPELLER SHAFT

CLEAR CANCEL OK

CLICK

UPDATE LIST

UPDATE #	SUBJECT	Hits(3)	MODEL
TSB-94-23-002	A/T SHIFT DELAY BEFORE WARM-UP	300	
TSB-93-23-001	A/T OIL PRESSURE TESTING - SERVICE MANUA	300	
TSB-92-23-006 REV	COLD DELAY SHIFT	300	

The field of search is reduced. At this point you may:

- Print the TSB list
- Select a specific TSBs for viewing
- Return to the UPDATE SEARCH menu

CANCEL OK

UPDATE LIST

UPDATE #	SUBJECT	Hits(3)	MODEL
TSB-94-23-002	A/T SHIFT DELAY BEFORE WARM-UP	300	
TSB-93-23-001	A/T OIL PRESSURE TESTING - SERVICE MANUA	300	
TSB-92-23-006 REV	COLD DELAY SHIFT	300	

Click on:

TSB - 94 - 23 - 002
&
TSB - 92 - 23 - 006

Then click the OK button.
The first chosen TSB will appear.

CANCEL OK

MITSUBISHI MOTOR SALES OF AMERICA, Inc. TECHNICAL SERVICE BU

SUBJECT: A/T SHIFT DELAY BEFORE WARM-UP

No: TSB-94-23-002

DATE: May, 1994

MODEL: Various 1992-93 Models. See Below

CIRCULATE TO: GENERAL MANAGER PARTS MANAGER TECHNICIAN
 SERVICE ADVISOR SERVICE MANAGER WARRANTY PROCESSOR SALES MANAGER

View the next TSB by clicking the **NEXT CONTENT** icon button, in lower-right corner.

reaching operating temperature. The
 icle operating temperature is reached.
 ition except the "shift delay before

following:

ector between "Neutral" and "Drive,"
 e."

RETURN LIST



MITSUBISHI
ELECTRONIC DIAGNOSTIC
& INFORMATION CENTER

Using **TIR** Technical Information Retrieval

MITSUBISHI MOTOR SALES OF AMERICA, Inc. **TECHNICAL SERVICE BU**

SUBJECT: **A/T SHIFT DELAY BEFORE WARM-UP** No: TSB-94-23-002
 DATE: May, 1994
 MODEL: Various 1992-93 Models. See Below

CIRCULATE TO:	<input checked="" type="checkbox"/> GENERAL MANAGER	<input checked="" type="checkbox"/> PARTS MANAGER	<input checked="" type="checkbox"/> TECHNICIAN
<input checked="" type="checkbox"/> SERVICE ADVISOR	<input checked="" type="checkbox"/> SERVICE MANAGER	<input checked="" type="checkbox"/> WARRANTY PROCESSOR	<input type="checkbox"/> SALES MANAGER

BACKGROUND INFORMATION
 Vehicles affected by an A/T shift delay exhibit the condition *before* reaching operating temperature. The shift delay described in this bulletin *does not occur after* normal vehicle operating temperature is reached. This bulletin describes a condition except the "shift delay before warm-up."

Specific symptoms of the following:

- Delayed shift selector between "Neutral" and "Drive," and "Reverse."

To bookmark this TSB, click the BOOKMARK icon button.

BOOKMARK

REFERENCE TITLE
COLD DELAY SHIFT

Select BOOKMARK

DATE	TITLE

Click CANCEL if TSB is already on list.
 Click SET to add TSB to list.
 Click OK when done.

SET DELETE CANCEL OK

MITSUBISHI MOTOR SALES OF AMERICA, Inc. **TECHNICAL SERVICE BU**

SUBJECT: **A/T SHIFT DELAY BEFORE WARM-UP** No: TSB-94-23-002
 DATE: May, 1994
 MODEL: Various 1992-93 Models. See Below

CIRCULATE TO:	<input checked="" type="checkbox"/> GENERAL MANAGER	<input checked="" type="checkbox"/> PARTS MANAGER	<input checked="" type="checkbox"/> TECHNICIAN
<input checked="" type="checkbox"/> SERVICE ADVISOR	<input checked="" type="checkbox"/> SERVICE MANAGER	<input checked="" type="checkbox"/> WARRANTY PROCESSOR	<input type="checkbox"/> SALES MANAGER

TSB graphics & tables may be enlarged.

1. Scroll down to an illustration by clicking the large arrow buttons below
2. Then click on the illustration

The illustration will display larger. To return to the normal view, click again.

1. Connect the Scan Tool (MUT-II), turn the ignition key to the "ON" position (do not and retrieve any stored Diagnostic Trouble Codes (DTCs). Do not disconnect the Scan Tool. It will be used again in Step 6.
2. Raise the vehicle on a suitable hoist and connect a 300 psi oil pressure gauge with adaptor to the kickdown (K/D) brake pressure "applied" port. Use part number **MIT304253** for the gauge and part number **MD998332-01** for the adaptor. These tools are part of your dealer's special service tool kit.

You may print the TSB by:
 Clicking the Print icon at bottom of screen



MITSUBISHI
ELECTRONIC DIAGNOSTIC
& INFORMATION CENTER

Using *TIR* Technical Information Retrieval

UPDATE SEARCH

VIN	JA3
YEAR	199
MODEL	300
GROUP	23
ENGINE	6G7
TRANSMISSION	F4A
UPDATE TYPE	

Narrow search by using search categories:

- GROUP
- UPDATE#
- SYMPTOM
- KEYWORD
- UPDATE TYPE

CLEAR CANCEL OK

UPDATE SEARCH

UPDATE TYPE

Chose the desired category then click OK.

- Technical Service Bulletin
- Emission Recall Bulletin
- Service Campaign Bulletin
- Safety Recall Bulletin
- Others

After choosing the update type, click OK and a list of all chosen update types for that vehicle will appear. You can then select update(s) for viewing.

CLEAR CANCEL OK OK

UPDATE SEARCH

Click on UPDATE #

VIN	JA3XD64BXNY1111	UPDATE#	
YEAR	1992	DATE	
MODEL	3000GT		
GROUP	23		
ENGINE	6G72(3.0		
TRANSMISSION	F4A33(4		
UPDATE TYPE			

Narrow search by using search categories:

- GROUP
- UPDATE#
- SYMPTOM
- KEYWORD
- UPDATE TYPE

CLEAR CANCEL OK

UPDATE SEARCH

ENTER UPDATE #

TSB-94-23-002 Type in desired TSB number.

0	1	2	3	4	5	6	7	8	9
A	B	C	D	E	F	G	H	I	J
K	L	M	N	O	P	Q	R	S	T
U	V	W	X	Y	Z	.	,	-	
SPACE								BACKSPACE	

CLEAR CANCEL OK

Click OK



Using *TIR* Technical Information Retrieval

UPDATE LIST

UPDATE #	SUBJECT	Hits(1) MODEL
TSB-94-23-002	A/T SHIFT DELAY BEFORE WARM-UP	300

To view the TSB, click the line the TSB is listed on, then click OK.
or
To leave the Update List, click CANCEL.

CANCEL OK

SEARCH

Narrow search by using search categories:

- GROUP
- UPDATE#
- SYMPTOM
- KEYWORD
- UPDATE TYPE

UPDATE# DATE SYMPTOM KEYWORD

UPDATE TYPE

CLEAR CANCEL OK

UPDATE SEARCH

SYMPTOM Choices

- 0305 - OTHER M/T TROUBLE
- 0400 - A/T TROUBLE
- 0401 - DRIVING NOT POSSIBLE
- 0402 - POOR DRIVEABILITY (A/T)
- 0403 - ATF LEAK
- 0404 - SELF MALFUNCTION CODE OUTPUT
- 0405 - CANNOT COMMUNICATE WITH ECU
- 0406 - A/T NOISE
- 0407 - A/T VIBRATION
- 0408 - OTHER A/T TROUBLE
- 0500 - CHASSIS TROUBLE
- 0501 - VEHICLE PULLS/WANDERS

CLEAR CANCEL OK

UPDATE LIST

UPDATE #	SUBJECT	Hits(2) MODEL
TSB-94-23-002	A/T SHIFT DELAY BEFORE WARM-UP	300
TSB-92-23-006 REV	COLD DELAY SHIFT	300

To view these TSBs, you would highlight one (or more), then click OK.
clicking CANCEL button or TOP MENU icon would return you to Update Search screen.

CANCEL OK



MITSUBISHI
ELECTRONIC DIAGNOSTIC
& INFORMATION CENTER

Using *TIR* Technical Information Retrieval

UPDATE SEARCH

Narrow search by using search categories:

- GROUP
- UPDATE#
- DATE
- SYMPTOM
- KEYWORD
- UPDATE TYPE

UPDATE# _____

DATE _____

SYMPTOM _____

KEYWORD _____

CLEAR CANCEL OK

HELP TRPS PRINT DIAGN

UPDATE SEARCH

Enter KEYWORD
SHIFT

For this example **SHIFT** has been added to the KEYWORD field. Normally you would use the keyboard to enter one word here.

Click button to proceed.

5 6 7 8 9
F G H I J
P Q R S T
Z . , - |
BACKSPACE

CLEAR CANCEL OK

HELP TRPS PRINT DIAGN

UPDATE SEARCH

VIN JA3XD64BXNY1111 UPDATE# _____

YEAR 1992 DATE _____

MODEL 3000GT SYMPTOM _____

GROUP 23 KEYWORD SHIFT

ENGINE _____

TRANSMISSION _____

UPDATE TYPE _____

Click OK to continue.

CLEAR CANCEL OK

HELP TRPS PRINT DIAGN

UPDATE LIST

UPDATE #	SUBJECT	Hits(2) MODEL
TSB-94-23-002	A/T SHIFT DELAY BEFORE WARM-UP	300
TSB-92-23-006 REV	COLD DELAY SHIFT	300

The KEYWORD 'SHIFT' directs you to the Nov. 1992 and May 1994 TSBs on shift delay.

As before, you can view these TSBs by selecting them and clicking OK

CANCEL OK

HELP TRPS PRINT DIAGN



Using *TIR* Technical Information Retrieval

UPDATE SEARCH

Narrow search by using search categories:

- GROUP
- UPDATE#
- DATE
- SYMPTOM
- KEYWORD
- UPDATE TYPE

UPDATE# _____

DATE _____

SYMPTOM _____

KEYWORD _____

CLEAR CANCEL OK

HELP RESULT TIRPO PRINT MESSAGE TIR

UPDATE SEARCH

START DATE Choices END DATE Choices

JANUARY	1995	JANUARY	1995
FEBRUARY	1994	FEBRUARY	1994
MARCH	1993	MARCH	1993
APRIL	1992	APRIL	1992
MAY	1991	MAY	1991
JUNE	1990	JUNE	1990
JULY	1989	JULY	1989
AUGUST	1988	AUGUST	1988
SEPTEMBER	1987	SEPTEMBER	1987
OCTOBER	1986	OCTOBER	1986
NOVEMBER	1985		
DECEMBER	1984		

Select the date range for your Update search, the click OK.

CLEAR CANCEL OK

HELP RESULT TIRPO PRINT MESSAGE TIR

UPDATE SEARCH

VIN	JA3XD64BXNY1111	UPDATE#	_____
YEAR	1992	DATE	09/1992 - 01/1995
MODEL	3000GT	SYMPTOM	_____
GROUP	23	KEYWORD	_____
ENGINE	_____		
TRANSMISSION	_____		
UPDATE TYPE	_____		

OK to continue.

CLEAR CANCEL OK

HELP RESULT TIRPO PRINT MESSAGE TIR

UPDATE LIST

UPDATE #	SUBJECT	Hits(3)	MODEL
TSB-94-23-002	A/T SHIFT DELAY BEFORE WARM-UP	300	
TSB-93-23-001	A/T OIL PRESSURE TESTING - SERVICE MANUA	300	
TSB-92-23-006 REV	COLD DELAY SHIFT	300	

The KEYWORD 'DATE' directs you to the Nov. 1992 and May 1994 TSBs on shift delay (and TSB-92-22-002).

As before, you can view these TSBs by selecting them and clicking OK

CANCEL OK

HELP RESULT TIRPO PRINT MESSAGE TIR

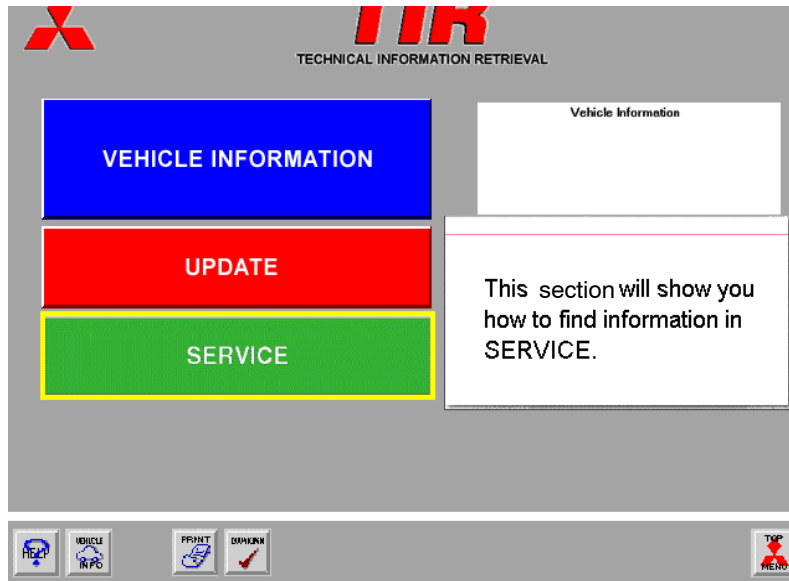
THIS IS THE END OF THE 'UPDATE' SECTION





MITSUBISHI
ELECTRONIC DIAGNOSTIC
& INFORMATION CENTER

Using **TIR** Technical Information Retrieval

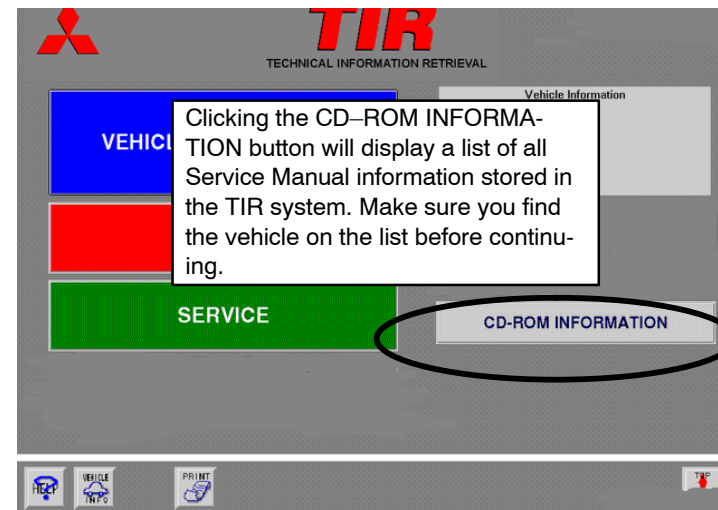
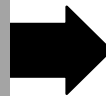
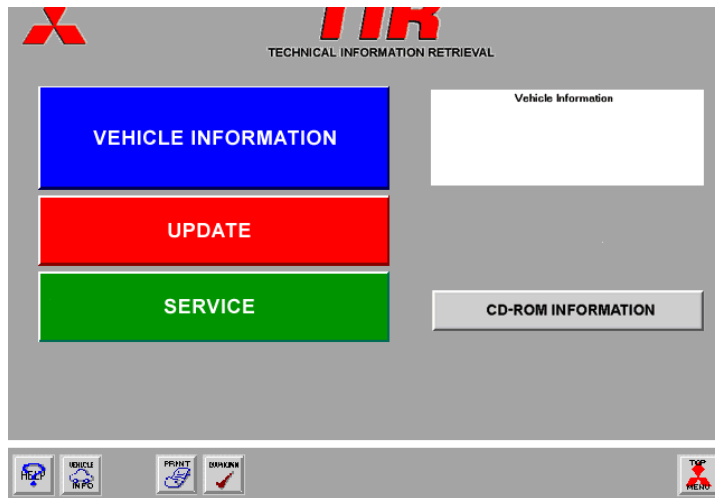


SERVICE

The SERVICE (green) section of TIR provides highly searchable electronic versions of the vehicle service manuals. As with the UPDATE section, active buttons on each screen will be completely colored, whereas buttons are not active on the screen where they are shaded.

NOTE:

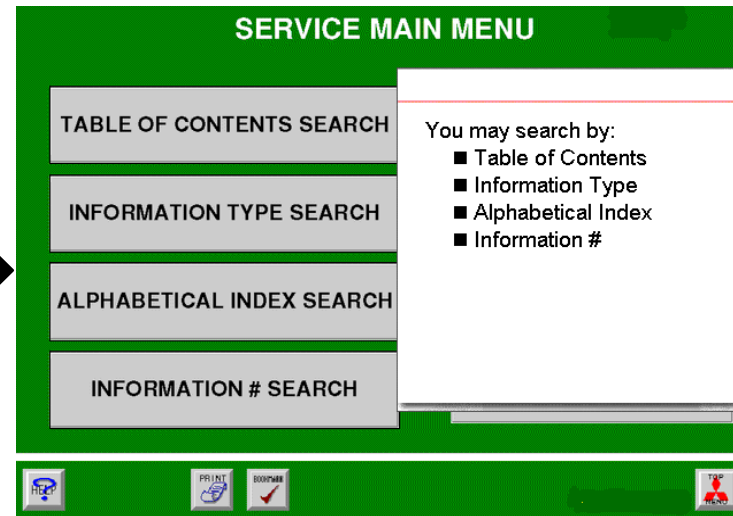
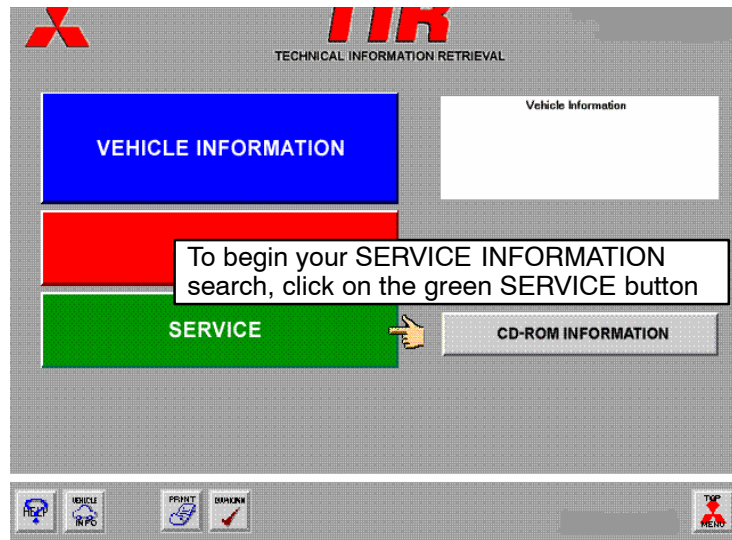
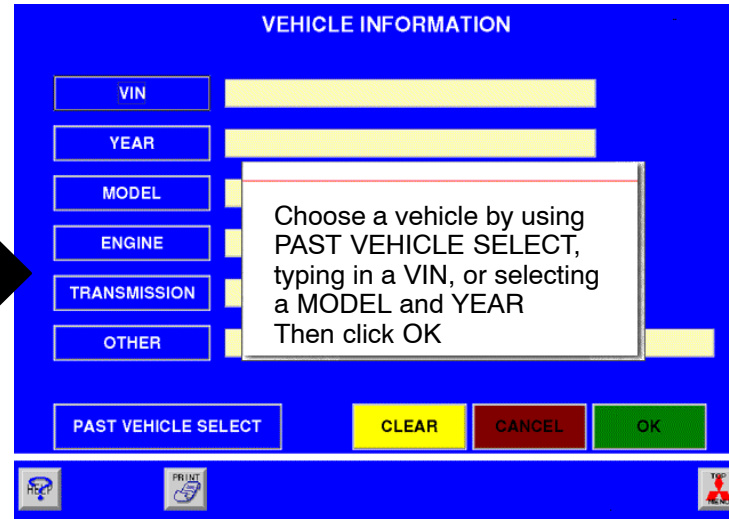
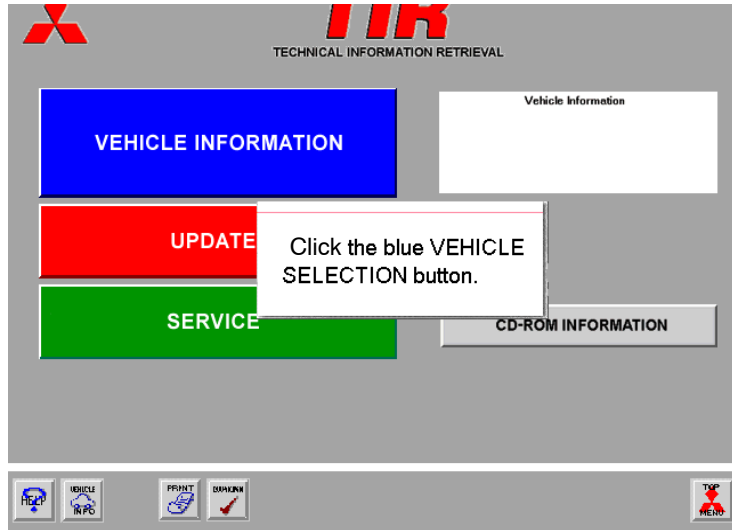
Not all Mitsubishi vehicle service manuals are available in MEDIC. If you encounter a model which is not listed in the CD-ROM INFORMATION, you will need to refer to the paper manual for service information for that vehicle.





MITSUBISHI
ELECTRONIC DIAGNOSTIC
& INFORMATION CENTER

Using *TIR* Technical Information Retrieval





MITSUBISHI
ELECTRONIC DIAGNOSTIC
& INFORMATION CENTER

Using **TIR** Technical Information Retrieval

SERVICE MAIN MENU

Vehicle Information

TABLE OF CONTENTS SEARCH

INFORMATION TYPE SEARCH

ALPHABETICAL INDEX SEARCH

INFORMATION # SEARCH

CD-ROM Information

EXAMPLE

The complaint on the '96 Montero is **low power at high speeds**.

Observed:

- VICS linkage does not move as engine speed reaches 5,000 RPM
- Vacuum circuit operates normally

Conclusion:

- VICS electrical problem

SERVICE MAIN MENU

TABLE OF CONTENTS SEARCH

INFORMATION TYPE SEARCH

ALPHABETICAL INDEX SEARCH

INFORMATION # SEARCH

CD-ROM Information

Touch the TABLE OF CONTENTS SEARCH button!

TABLE OF CONTENTS

Select GROUP Hits(37)

- 00 -GENERAL
- 11 -ENGINE
- 13 -FUEL
- 14 -ENGINE COOLING
- 15 -INTAKE AND EXHAUST**
- 16 -ENGINE ELECTR
- 17 -ENGINE AND EM
- 23 -AUTOMATIC TR
- 25 -PROPELLER SHA
- 26 -FRONT AXLE
- 27 -REAR AXLE
- 31 -WHEEL AND TIR

The VICS is part of the Engine Intake.

Click **15 - INTAKE AND EXHAUST**, then touch OK.

CANCEL OK

TABLE OF CONTENTS

GROUP SELECTED 15 -INTAKE AND EXHAUST Hits(18)

Select CONTENTS

- EXHAUST MANIFOLD <3.5L>
- EXHAUST PIPE, MAIN MUFFLER AND CATALYTIC CONVERTER <3.5L> GENERAL SPECIFICATION(S)
- INTAKE MANIFOLD
- INTAKE MANIFOLD PLENUM
- ON VEHICLE SERVICE SERVICE SPECIFICATION(S) TROUBLESHOOTING

You are troubleshooting an intake system problem with an unknown electrical malfunction involving the VICS.

1. Click **On Vehicle Service**
2. Click **VICS Check**
3. Then click OK

CANCEL OK



Using *TIR* Technical Information Retrieval

TABLE OF CONTENTS

GROUP SELECTED 15 -INTAKE AND EXHAUST

Select CONTENTS Hits(18)

- ⊕ EXHAUST MANIFOLD <3.5L>
- ⊕ EXHAUST PIPE, MAIN MUFFLER AND CATALYTIC CONVERTER <3.5L>
- GENERAL SPECIFICATION(S)
- ⊕ INTAKE MANIFOLD
- ⊕ INTAKE MANIFOLD PLENUM
- ⊖ ON VEHICLE SERVICE
- INTAKE MANIFOLD VACUUM CHECK
- VARIABLE INDUCTION CONTROL SYSTEM CHECK <3.5L>
- SERVICE SPECIFICATION(S)
- TROUBLESHOOTING

CANCEL OK

VARIABLE INDUCTION SYSTEM CHECK

<3.5L Engine>

(1) Warm up the engine.

This electronic page has procedures for checking VICS vacuum and electrical circuits.

- To see the entire page, use the down arrows.
- When you locate the electrical information, click the COIL CONTINUITY illustration.

engine is suddenly raced pressure does not change

3,400 r/min or more Negative Open

12V Battery Z7EN0640

Category	When applied	When not applied
Positive Voltage	Open	Open
	Covered with a finger	Open

(2) COIL CONTINUITY CHECK

Use a circuit tester to measure the resistance of the coil.
Standard value: 36 - 44 Ω [At 20°C (68°F)]

Click the illustration to enlarge

To find the location and the circuit connection of the connector:

Click the CONNECTOR INDEX icon button at the bottom of the screen.



MITSUBISHI
ELECTRONIC DIAGNOSTIC
& INFORMATION CENTER

Using *TIR* Technical Information Retrieval

CONNECTOR INDEX

Search CONNECTOR By:

NUMBER NAME

Select CONNECTOR

Identify the connector by NAME:
Click NAME button above.

Select DIAGRAM

CIRCUIT DIAGRAM
 CONFIGURATION DIAGRAM

CANCEL OK

CONNECTOR INDEX

Enter NAME

VAR

0	1	2	3	4	5	6	7	8	9
A	B	C	D	E	F	G	H	I	J
K	L	M	N	O	P	Q	R	S	T
U	V	W	X	Y	Z	.	,	-	

FORWARD BCKSPC

SEARCH CANCEL OK

Type 'VAR' from the keyboard,
then click OK.

CONNECTOR INDEX

Search CONNECTOR By:

NUMBER NAME VAR

Select CONNECTOR

VAR Hits(6)

- A-22 Shock absorber(Front:L.H.)>Remote controlled variable shock absorber>
- A-33 Shock absorber(Front:R.H.)>Remote controlled variable shock absorber>
- G-20 Shock absorber(Rear:L.H.)>Remote controlled variable shock absorber>
- A-02 Shock absorber(Rear:R.H.)>Remote controlled variable shock absorber>
- A-58- Variable induction control solenoid**
- E-19 Variable shock absorber control unit

Select DIAGRAM

CIRCUIT DIAGRAM
 CONFIGURATION DIAGRAM

CANCEL OK

Click A-58, Variable Induction Control Solenoid,
then click OK

MFI SYSTEM <3.5L engine>

You can scroll down using the arrows at the bottom of the screen to see the entire circuit diagram to locate the desired connector. You may also print or bookmark any page or illustration using buttons at the bottom of each screen.



Using *TIR* Technical Information Retrieval

You have:

- Located the troubleshooting instructions
- Learned the resistance values for the VICs solenoid
- Found the VIC system circuit diagram
- Discovered the solenoid connector number

Navigation icons: HELP, VEHICLE INFO, ASSEMBLY INFO, PRINT, BOOKMARK, CONFIG FILE INDEX, GROUP TOC, FREQUENTLY ASKED QUESTIONS, TOP

To locate the A-58-1 connector in the vehicle:

Click '**CONNECTOR INDEX**' icon below.

Navigation icons: HELP, VEHICLE INFO, ASSEMBLY INFO, PRINT, BOOKMARK, **CONNECTOR INDEX**, GROUP TOC, FREQUENTLY ASKED QUESTIONS, TOP

CONNECTOR INDEX

Search CONNECTOR By:

NUMBER NAME

Select CONNECTOR

Now click on the CONFIGURATION DIAGRAM radial button to select it.

Select DIAGRAM

CIRCUIT DIAGRAM

CONFIGURATION DIAGRAM

CANCEL OK

Navigation icons: HELP, VEHICLE INFO, PRINT, BOOKMARK, TOP

CONNECTOR INDEX

Search CONNECTOR By:

NUMBER NAME

Select CONNECTOR

Click NUMBER button above.

Select DIAGRAM

CIRCUIT DIAGRAM

CONFIGURATION DIAGRAM

CANCEL OK

Navigation icons: HELP, VEHICLE INFO, PRINT, BOOKMARK, TOP



MITSUBISHI
ELECTRONIC DIAGNOSTIC
& INFORMATION CENTER

Using **TIR** Technical Information Retrieval

CONNECTOR INDEX

Enter NUMBER
A - 58

0	1	2	3	4	5	6	7	8	9
A	B	C	D	E	F	G	H	I	J
K	L	M	N	O	P	Q	R	S	T
U	V	W	X	Y	Z	.	,	-	

FORWARD BCKSPC

SEARCH CANCEL OK

Type 'A58' from the keyboard.
Then click OK.

CONNECTOR INDEX

Search CONNECTOR By:

NUMBER NAME VAR

Select CONNECTOR

VAR Hits(6)

- A-22 Shock absorber(Front:L.H.)>Remote controlled variable shock absorber>
- A-33 Shock absorber(Front:R.H.)>Remote controlled variable shock absorber>
- G-20 Shock absorber(Rear:L.H.)<Remote controlled variable shock absorber>
- G-02 Shock absorber(Rear:R.H.)<Remote controlled variable shock absorber>
- A-58- Variable induction control solenoid
- E-19 Variable shock absorber control unit

Select DIAGRAM

CIRCUIT DIAGRAM

CONFIGURATION DIAGRAM

CANCEL OK

Click 'A-58 - Variable Induction Control Connector,' then click OK.

Using the down button at the bottom of the list, scroll down until you find the connector number A-58 and click.

Injector No. 3
A-54
Injector No. 4
A-55
Injector No. 1
A-56
Injector No. 2
A-56-1
Manifold differential pressure sensor
A-57
Cruise control actuator
A-58
Evaporative emission purg
A-58-1
Variable induction control solenoid
A-58-2
Control wiring harness and harness combination
A-58-3
Crankshaft position sensor

You have now successfully located the component configuration diagram. You can print, bookmark using the lower buttons. You can also zoom in and out on the illustration using the two magnifying buttons.

Manifold differential pressure sensor
A-57
Cruise control actuator
A-58
Evaporative emission purg
A-58-1
Variable induction control solenoid
A-58-2
Control wiring harness and harness combination
A-58-3
Crankshaft position sensor

END OF TABLE OF CONTENTS SEARCH INSTRUCTIONS



MITSUBISHI
ELECTRONIC DIAGNOSTIC
& INFORMATION CENTER

Using *TIR* Technical Information Retrieval

SERVICE MAIN MENU

TABLE OF CONTENTS SEARCH **DONE**

INFORMATION TYPE SEARCH

ALPHABETICAL INDEX SEARCH

INFORMATION # SEARCH

CD-ROM Information

Vehicle Information
JA4MR51M1TJ111111
1996 MONTERO

Now click the INFORMATION TYPE SERVICE button to become familiar with this search category.

INFORMATION TYPE SEARCH

TYPE SELECTED TROUBLESHOOTING

Select SERVICE TITLE Hits(54)

- TROUBLESHOOTING 14 -ENGINE COOLING
- TROUBLESHOOTING 15 -INTAKE AND EXHAUST
- TROUBLESHOOTING 16 -ENGINE ELECTRICAL
- TROUBLESHOOTING 16 -ENGINE ELECTRICAL
- TROUBLESHOOTING 15 INTAKE EXHAUST
- TROUBLESHOOTING 25 -PROPELLER SHAFT
- TROUBLESHOOTING 26 -FRONT AXLE
- TROUBLESHOOTING 27 -REAR AXLE

Using the down arrows, scroll down to TROUBLESHOOTING 15 INTAKE EXHAUST, click to select it, than click OK

CANCEL OK

TROUBLESHOOTING

Trouble Symptom	Probable Cause	Remedy
Exhaust gas leakage	Loose joints	Re-tighten
	Broken pipe or muffler	Repair or replace
Abnormal noise	Broken separator in muffler	Replace
	Broken rubber hangers or suspender	Replace
	Interference of pipe or muffler with vehicle body	Correct
	Broken pipe or muffler	Repair or replace

The TROUBLESHOOTING section for INTAKE AND EXHAUST is now displayed.

The NEXT CONTENT & PREVIOUS CONTENT buttons can be used as electronic page turners to page through the troubleshooting section.

12V Battery

When applied	Open	Negative pressure leaks
When not applied <td>Covered with a finger</td> <td>Negative pressure is maintained</td>	Covered with a finger	Negative pressure is maintained
When not applied <td>Open</td> <td>Negative pressure is maintained</td>	Open	Negative pressure is maintained

(2) COIL CONTINUITY CHECK
Use a circuit tester to measure the resistance of the coil.
Standard value: 36 - 44 Ω [At 20°C (68°F)]

You can page through the section until you find the desired troubleshooting information.



MITSUBISHI
ELECTRONIC DIAGNOSTIC
& INFORMATION CENTER

Using *TIR* Technical Information Retrieval

INFORMATION TYPE SEARCH Hits(22)

- ALL SCHEDULED MAINTENANCE INSTRUCTIONS
- CIRCUIT DIAGRAM
- COMPONENT LOCATION
- CONFIGURATION DIAGRAM
- DIAGNOSTIC TROUBLE CODES AND ASSOCIATED PROCEDURES
- DISASSEMBLY AND REASSEMBLY
- GENERAL DIAGNOSTICS AND TESTS
- GENERAL INFORMATION
- GENERAL SAFETY INFORMATION
- GENERAL SPECIFICATION
- INSPECTION, ADJUSTMENT AND CLEANING

CANCEL OK

You can now return to the main SERVICE MENU using the TOP MENU button, choose INFORMATION TYPE SEARCH and then search for any of the types of information listed, just as shown in the previous example.

END OF INFORMATION TYPE SEARCH INSTRUCTIONS

SERVICE MAIN MENU

TABLE OF CONTENTS SEARCH **DONE**

INFORMATION TYPE SEARCH **DONE**

ALPHABETICAL INDEX SEARCH

INFORMATION # SEARCH

Vehicle Information
JA4MR51M1TJ111111
1996 MONTERO
6G74(3.5D4,MPI)
V4AW3(4A,T-4WD)
OTHERS

Click the ALPHABETICAL INDEX search button to become familiar with this search category.

ALPHABETICAL INDEX

Enter 3 Char Min MFI

Type in MFI, then click OK.

0	1	2	3	4	5	6	7	8	9
A	B	C	D	E	F	G	H	I	J
K	L	M	N	O	P	Q	R	S	T
U	V	W	X	Y	Z	.	,	-	

SPACE FORWARD BCKSPC

CLEAR CANCEL OK



MITSUBISHI
ELECTRONIC DIAGNOSTIC
& INFORMATION CENTER

Using *TIR* Technical Information Retrieval

SERVICE MAIN MENU

TABLE OF CONTENTS SEARCH
DONE

INFORMATION TYPE SEARCH
DONE

ALPHABETICAL INDEX SEARCH
DONE

INFORMATION # SEARCH

Vehicle Information
JA4MR51M1TJ111111
1996 MONTERO
6G74(3.5,D4,MPI)
V4AW3(4A/T-4WD)
OTHERS

Now click the INFORMATION # SEARCH button to become familiar with this search category.

INFORMATION # SEARCH

Enter COMPLETE INFORMATION #

Information search requires a document number. Each electronic page in the MEDIC system has a specific document number.

To view the circuit diagram for the VICS, we will use the document number below:

M9010 008 0182 04

CLEAR CANCEL OK

INFORMATION # SEARCH

Enter COMPLETE INFORMATION #

m9010 - 008 - 0182 - 04

0	1	2	3	4	5	6	7	8	9
A	B	C	D	E	F	G	H	I	J
K	L	M	N	O	P	Q	R	S	T
U	V	W	X	Y	Z	.	,	-	

SPACE FORWARD BCKSPC

CLEAR CANCEL OK

MFI SYSTEM <3.5L engine>

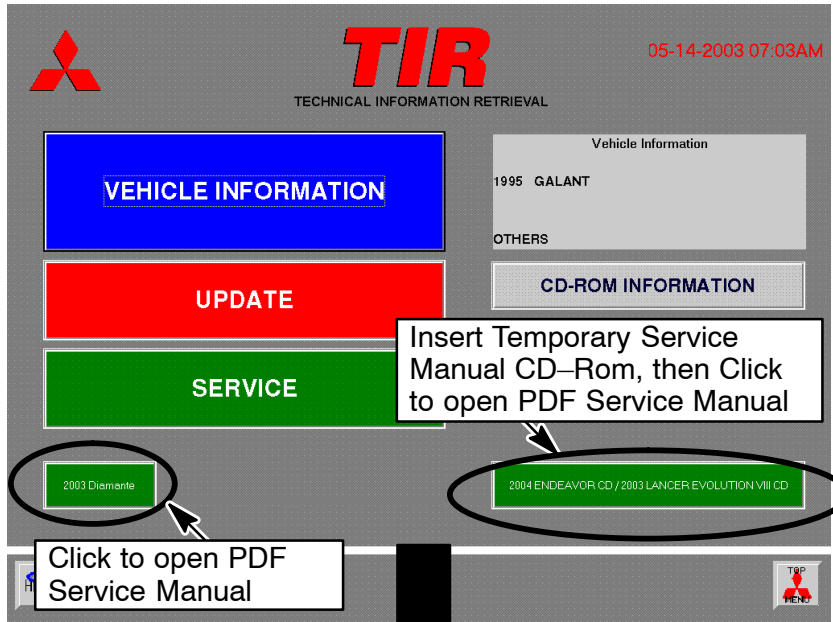
This electronic page includes the VICS electrical circuit.

- To identify the Document Information number for this page, you would click 'DOCUMENT INFO' icon,



MITSUBISHI
ELECTRONIC DIAGNOSTIC
& INFORMATION CENTER

Using **TIR** Technical Information Retrieval

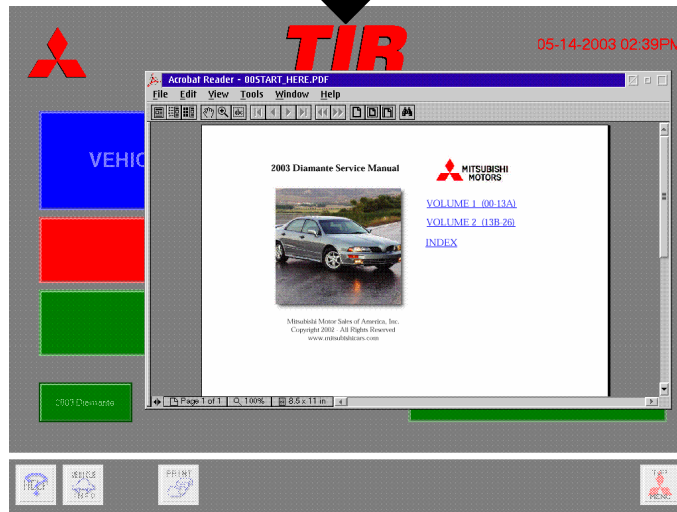


PDF Service Manual Information

Preliminary and temporary service manual information may be provided until the permanent *MEDIC* information is available. These documents will be indicated by green buttons on the bottom of the main TIR menu. There may be two types of information indicated:

- Preliminary Manual – a complete manual downloaded and stored on the MEDIC system.
- Temporary Manual – requires a CD-Rom which contains the temporary manual in PDF format.

NOTE: When the final version of the service manual is available, the information will be downloaded and the temporary or preliminary option buttons will no longer appear on the TIR menu.



When using either of the PDF service manual options, Adobe Acrobat PDF Reader will open automatically and the service manual information will be displayed. You can navigate the manual using the normal PDF links, indicated by blue links throughout the documents. To exit, click and return to the TIR menu, exit by using the task bar at the top of the Adobe Acrobat Reader window.



MITSUBISHI
ELECTRONIC DIAGNOSTIC
& INFORMATION CENTER

Using *TIR* Technical Information Retrieval

SERVICE MAIN MENU

TABLE OF CONTENTS SEARCH
DONE

INFORMATION TYPE SEARCH
DONE

ALPHABETICAL INDEX SEARCH
DONE

INFORMATION # SEARCH
DONE

Vehicle Information
JA4MR51M1TJ111111
1996 MONTERO
6G74(3.5,D4,MPI)
V4AW3(4A/T-4WD)
OTHERS

CD-ROM Information

HELP PRINT BOOKMARK TOP MENU

This completes the USING TIR tutorial.

[CLICK HERE TO RETURN TO THE 'USING MEDIC' MAIN PAGE.](#)