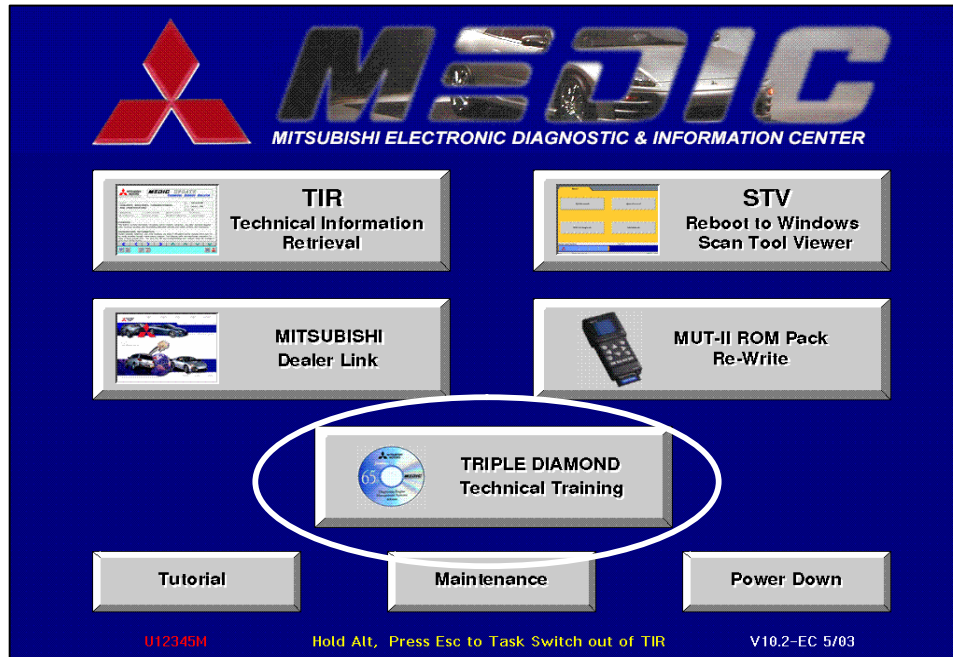




MITSUBISHI
ELECTRONIC DIAGNOSTIC
& INFORMATION CENTER

Using TRIPLE DIAMOND Technical Training

USING TRIPLE DIAMOND Technical Training



The TRIPLE DIAMOND Technical Training feature of MEDIC allows you to view Mitsubishi Technical Training videos on CD. To use, simply insert any Mitsubishi Technical Training video into the MEDIC system's CD drive and click the TRIPLE DIAMOND Technical Training button.

NOTE:

For better performance from the CD video player, reboot the system (<Ctrl> + <Alt> <Delete>) before inserting a CD and starting the Triple Diamond Technical Training function.

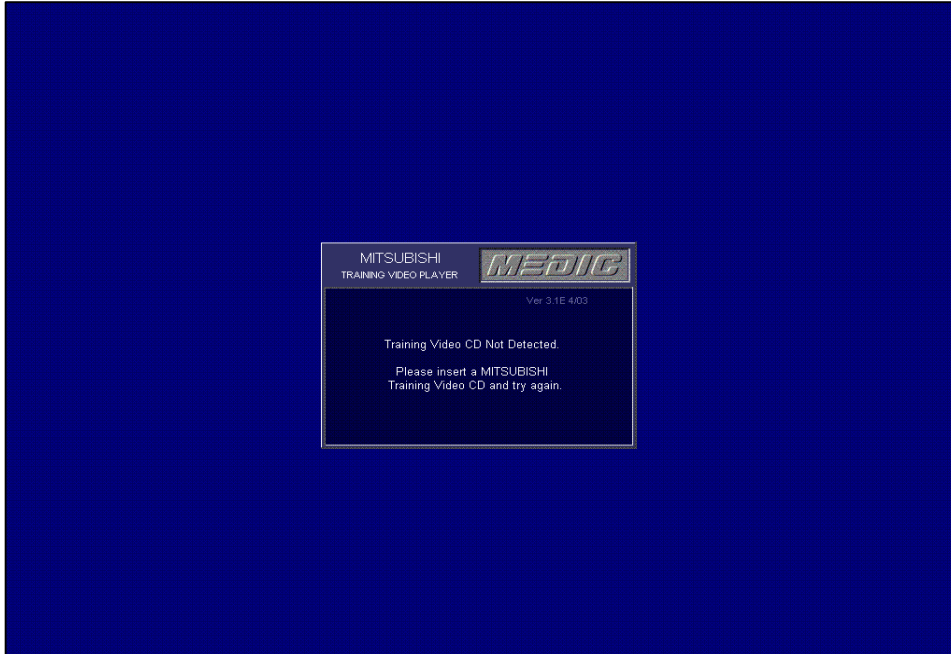
Using MEDIC's task-switch feature is not recommended while using the Triple Diamond Technical Training CD Video player function.





MITSUBISHI
ELECTRONIC DIAGNOSTIC
& INFORMATION CENTER

Using TRIPLE DIAMOND Technical Training



Clicking the TRIPLE DIAMOND button without loading a CD will give you this message. Insert a CD and click the button again.



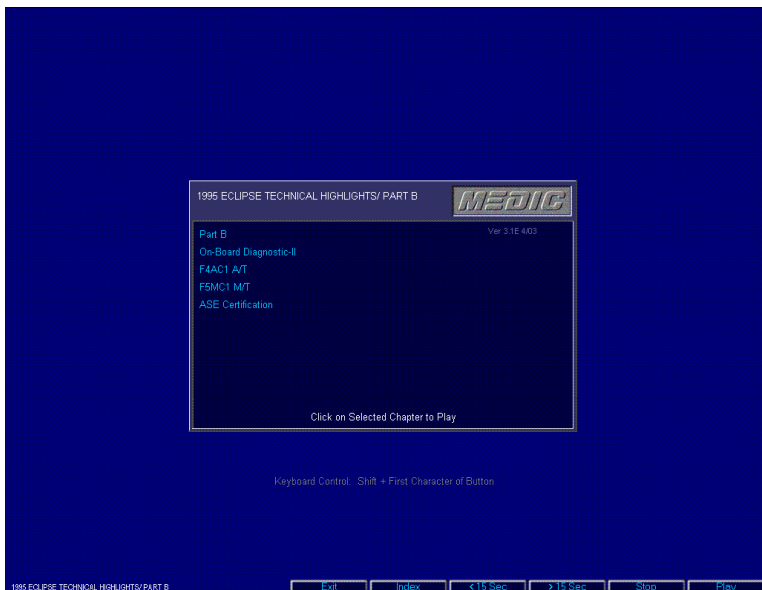
MITSUBISHI
ELECTRONIC DIAGNOSTIC
& INFORMATION CENTER

Using TRIPLE DIAMOND Technical Training

When the CD is loaded properly, you will get this message indicating that the CD is loading.



When the CD is loaded, you will see the CD contents menu. Click the desired section to play. Use the buttons at the bottom of the screen to navigate the CD video.



To return to the MEDIC Main Menu, click the Exit button.

[RETURN TO MEDIC TUTORIAL](#)