

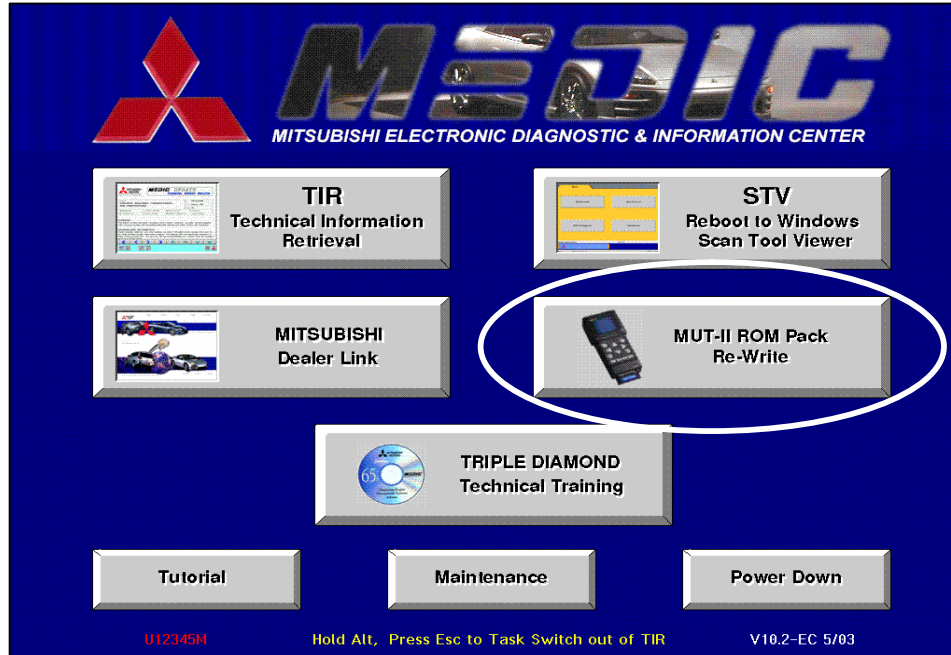


MITSUBISHI
ELECTRONIC DIAGNOSTIC
& INFORMATION CENTER

Using

MUT-II ROM Pack Re-Write

USING the MUT-II ROM Pack Re-Write Function



The MUT-II ROM Pack Re-Write function of *MEDIC* allows you to re-write (reflash) your red and blue scan tool ROM Packs with the latest Mitsubishi Motors re-programming data. Clicking the MUT-II ROM Pack Re-Write button from the *MEDIC* Main Menu starts the re-write program.

For Instructions for reprogramming using this function, click on one of the links below:

- [Service Update \(Blue Label\)](#)
- [ECU Flash Update \(Red Label\)](#)
- [ROM Pack Information](#)

[Return to MEDIC Tutorial](#)

